

Product datasheet for **MG22522**

Igf2r (NM_010515) Mouse Tagged ORF Clone

Product data:

Product Type:	Expression Plasmids
Product Name:	Igf2r (NM_010515) Mouse Tagged ORF Clone
Tag:	TurboGFP
Symbol:	Igf2r
Synonyms:	AI661837; CD222; CI-MPR; M6P/IGF2R; Mpr300
Mammalian Cell Selection:	Neomycin
Vector:	pCMV6-AC-GFP (PS100010)
E. coli Selection:	Ampicillin (100 ug/mL)
ORF Nucleotide Sequence:	>MG22522 representing NM_010515 Red=Cloning site Blue=ORF Green=Tags(s)

TTTTGTAATACGACTCACTATAGGGCGGCCGGAATTCGTCGACTGGATCCGGTACCGAGGAGATCTGCCGCCGCGATCGCC

ATGCGGGCCGTTTCAGCTGGGACCGGTGCCCTCCGGGCCGCGCGTTCGCGCTCCTGCCGCCGCTCCTGCTGCTGCTGCTGCTGCTGCGCGCCGCGGGCTCCGCGCAGGCCAGGCCGTCGACTTGGACGCCCTGTGCAGTTACACATGCGGAAGCTGTTGACTCAGAAAAACAATGCAGTTTATAAGATCAACGCTGTGGAAATGTGGGTATTTCCAGCTGTGGGCCTACAAGTCTATCTGTATGTGTGACCTAAAGACAGAGAACTGCCGCTCAGTGGGTGACTCACTTTTGAGAAGTTTCAGCCAGATCACTCCTGGAATTC AACACCCTATGGGCTGCCAGCCTTCAGATTCACAGCACAGAATCCAGACTAGCATTACATTTCTGTGTGGGAAGACCCTGGGAACCTCTGAATTTGTAACGCCACAGACTGTGTGCATTACTTTGAATGGAGGACTACTGCAGCCTGCAAGAAAGACATATTTAAAGCTGATAAGGAGGTACCATGCTATGCATTTGATGACAAGTTACAGAAGCATGATTTAAACCCACTGATCAAGCTAAATGGTGGCTATCTGGTAGATGATTCTGATCCTGACACGTCCTCTGTTTCAACGTTGTGAGAGACATAGACTCCCTTCGGGACCCAGCACACAGCTGAGAGTCTGTCTGCTGGCACTGCTGCCTGTCTGCTGAAGGGAAACCAGGCATTTGACGTTGGCCGACCCAAAGGAGGGCTGAAGCTGTTGAGCAAGGACAGGCTCGTTCTGACTTATGTGAAGGAAGAGGGGAGAAAAGCCAGACTTCTGTAATGGTCACAGCCCTGCAGTGACAGTAACA TTTGTGTGCCATCTGAGCGGAGAGAGGGTACCATTCTAAACTCACTGCCAAGTCCAACCTGCCGTTATG AAGTTGAGTGGATCACCGAGTATGCCTGCCACAGAGATTACCTGCAAAGTGAGAGCTGCTCCCTCAGCAG TGAGCAGCATGATATTACTATTGACCTTAGTCCCTTGGCCAATATGGAGGGTCCCCCTATGTTTCTGATGGAAGAGAATACGTTTTTTATCAATGTCTGTGGGGACACAAAGGTCTCACTCTGTAATAACAAAGAGGCTGCTGTTGTCAAGAGAAAAAGCGGATTCCACTCAAGTCAAAATAGCAGGAAGACACCAGAACCAGACACTCCGGTACTCAGATGGAGACCTACCCTCATCTATTCTGGAGGTGATGAGTGTAGCTCTGGCTCCAGAGGATGAGTGTCAATAAATTTGAGTGCAACAAAAGTGCAGGTAAGGATGGGAGAGGAGAGCCTGTGTTCA CAGGTGAGGTGGACTGCACCTACTTCTTCACATGGGACACTAAAACGCCTGCATCAAAGAGAAGGAAGACCTCTCTGCGGGCCATCAATGGCAAGAAACGCTATGACCTGTCTGTGTTGGCTCGTCACTCAGAATCA



[View online »](#)

GAACAGAATTGGGAAGCAGTGGATGGCAGCCAGGCAGAATCAGAAAAGTATTTCTTCATCAACGTCTGTC
 ACCGGGTGCTGCAGGAGGGGAAGGCCAGGAAGTCTCTGAAGATGCTGCTGTGTGCGCTGTGGATAAGAA
 TGGGAGTAAAAACCTTGGAAAAATTTGTCTCTTCTCCTACAAAAGAGAAAGGACACATACAGCTCTTTAC
 ACTGATGGTGATGACTGTGGCAGTGATAAGAAAATATCAACTAACATCACACTTGTGTGCAAACAGGTG
 ATCTAGAAAGTGTCCAGTGCTAAGAGCTGCAAGATCTGATGGCTGCTTCTATGAGTTTGTGTCATAC
 GGCTGCTGCCTGTGACTGTGCAAGACAGAAGGAGAGAAGTGCACGGTCTTGTATGCCAGGCAGGGTTT
 TCCTTTGATTTGTCACTCCTCAGAAAGAAGTGGTGCATATAAAGTTGAGACAGAGAAGTATGACTTCT
 ACATAAATGTTTTGTGCCCTGTATCCATGGATCCTTGTCACTCAAACCTCGGGGCCCTGCCAGGTAGCGAA
 AAGTGGTAAGTCTTGGAACCTGGGGCTGAGTAGTACTAAGCTCACCTACTACGACGGAATGATCCAGCTG
 AGCTACAGGAACGGCACTCCCTATAACAATGAAAAGCACACACCGAGAGCCACACTGATTACCTTCTCT
 GTGACCGTGACGCTGGAGTGGGCTTCCCAGAATATCAGGAAGAGGACAACCTTACCTACAACCTCCGGTG
 GTACACCAGTTATGCCTGCCAGAAGAACCCTGGAGTGCATGGTACAGACCCCTCCATGATGGAACAG
 TATGACCTCTCCAGTCTAGTGAAGTCTGAAGTGGCTCTGGAGGAACTGGTATGCTATGAAAACTCCC
 GGGAACATGTTACACGGAGGAAACTACTACCTCAATGTGTGTCGGCCTCTGAATCCTGTGCCAGGCTGCGA
 TCGATATGCATCTGCTTCCAGATGAAATATGAAAATCATGAGGGCTCCTTGGCAGAGACTGATCCATC
 AGTAACTTGGGAGTTGCAAAGATAGGCCCTGTGGTGGAGGAGAGTGGCAGCCTCCTTATAGAGTATGTGA
 ACGGCTCTGCTTGCAACCACAGTGTGGCCAGCTCACCACCTACAGCACCAGGATCCATCTTGTCTGTGG
 TCGAGGATTTATGAACTCCCATCCCATATTCACTTTCACTGGGAATGTGTGGTCAAGTTTCTGTGGAAC
 ACGGAGGCTGCCTGCCCTATCCAGACAATCACAGAAAACAGACCAGGCTTGTCTCAATAAGGGACCCAGCA
 GTGGGTTTGTGTTAATCTTAGCCCACTCAACGATTCTGCTCAAGGACATGTGGTCTTAGGCATCGGAAA
 GACTTTTGTGTTCAATATCTGTGGTGAATGCCTGCCTGTGGAACGGTTGCGGGGAAGCCAGCCTATGGC
 TGCGAGCCGAAACTCAGATAGAAGATATTAAGGACCTAAGGCCACAAAGGCCGTCGGGATGGAGAGGA
 GCCTCCAGTTGTCTGCCAGGGATTCTCACTGACCTACAAGGGCTCTTCTCCCTCTGACAGAGGCAC
 AGCATTATCATCCGTTTTATTGCAACGATGACATTTACCAGGAGCCCAAAATTCCTGCATCAGGAC
 ATTGACTCCACACGAGGGATCCGGAACACTTACTTTGAGTTTGAACCTGCATTGGCTTGTACTCCTTCTC
 TAGTGGATTGTCAAGTACTGACCCAGCTGGGAACGAGTATGACTTGAGCGCCCTGAGCATGGTCAGGAA
 GCCATGGACTGCCGTGGACACGTCTGCATACGGGAAGAGGAGGCCTTCTACCTGAGTGTCTGCAACCT
 CTGCCCTATATCCCTGGCTGCCACGGCATTGCATTGGGGTCTGCATGGTGTGAGAAGACAACAGTTTTA
 ACTTGGGTGTGGTGCAGATCAGTCTCAAGCTACTGGAATGGGTCTCTCAGCATCTGTACGTGAATGG
 GGACAGATGTGGGACCAGCGCTTCTCCACCAGGATCGTGTTCGAGTGTGCCAGACGTCCGGCTCACCT
 ATGTTCCAGTTCTGTAACAACCTGTGAGTATGTGTTTGTGTGGCGAACAGTGGAGGCTGCCCTGTGATCA
 GAGAGGAAGGAGACAACCTGCCAGGTGAAGGACCCAGGCATGGCAATTTGTATGACCTGAAGCCCTGGG
 CCTCAATGACACCATCGTCAGTGTGGCGAGTACACCTACTACTTGGGGTCTGCGGGAAGCTGTATCA
 GATGTCTGCTCTGCCATGACGGATCCAAGGCAGTCTCATCATGCCAGGAAAAGAAAGGACCACAGGGAT
 TCCAGAAAGTGGCAGGACTCCTTAGCCAGAAGCTGACTTTCGAAAACGGACTGTTGAAAATGAACTATAC
 TGGGGGGGATACCTGCCATAAAGGTGATCAGCGCTCCACAACCATCTATTTCTACTGTGACCCGACTACA
 CAGAAGCCAGTGTCTGAAGGAAACTTCGGACTGCTCCTATATGTTTGTGAGTGGCGAACACAGTATGCC
 GCCACCTTTCAATGTGACAGAGTGTCTGTCCAGGATGCGGCTGGCAACTCCATTGACCTCTCCTCACT
 GTCAAGGTACAGTGACAACCTGGGAGGCTGTGACCAGGACAGGGCCACTGAGCATTACCTCATCAATGTA
 TGCAAGTCTCTGTCTCCACACGCTGGCACAGAGCCATGCCCTCCAGAGGACAGTGTGTTGTCTGTAATG
 GCTCTAAGCCTGTGAACCTTGGCAAGGTGAGGGATGGCCCTCAGTGGACAGACGGTGTGACTGTCCTGCA
 GTATGTGGATGGTACTTGTGCCAGACAAAATTCGGAGAAGGTCAACCATTATTCGCTTACCTGCAGT
 GACAACCAAGTGAACCTCAGGCCCTTTTTCATCAGTGTGTTTCAGGACTGTGAGTACACCTTCTCCTGGC
 CCACCCCTTCTGCCTGTCTGTGAAGAGCAACACACATGATGACTGCCAAGTACCAACCCAGCACAGG
 CCACCTGTTTACCTGAGCTCCTAAGTGGCAGAGCTGGTATCAATGCCTCCTACAGCGAGAAGGGGCTG
 GTCTTCATGAGCATCTGTGAGGAGAATGAGAAGTGTGGCCCCGGAGTGGGGCTGCTTTGGACAGACGA
 GGATCAGTGTGGCAAGGCCAGCAAGAGGCTGAGCTACAAGGACCAAGTCTGCAGCTGGTGTATGAGAA
 TGGGTCCCATGCCCCTTCCCTGTGAGACCTGAGGTACAAGAGTGTATCAGCTTTGTGTGCCGGCCTGAG
 GCTGGACCTACCAACAGGCCGATGCTCATCTCCTTGGACAAGCAGACGTGCACACTCTTCTTCTCCTGGC
 ACACACCCTGGCCTGTGAGCAAGCGACGGAGTGTACTGTGCGGAATGGAAGCTCGATTATTGACCTGTC
 CCCTCTCATCCACCGCACTGGTGGCTACGAAGCATACGATGAAAGTGGAGTACACCTCTGACACCACC
 CCTGACTTCTATCAACATCTGCCAGCCACTGAATCCCATGCACGGAGTGGCCTGCCCTGCAGTGGCT

CAGTATGCAAAGTTCCTGTGGACGGGCCCTATAGATATTGGCAGAGTCACAGGCCCTCCAATATTCAA
TCCTGTGGCGAATGAAGTCTACCTGAACCTTGGAGAGCAGCACTCATTGCTTAGCCGACAGATATATGAAC
TACACCTCACTCATCACATTTCACTGCAAGAGAGGAGTCAGCATGGGAACCTAAGCTGATAAGGACCA
ATGACTGCGACTTTGTGTTTGTAGTGGGAGACTCCGATTGTCTGTCTGACGAAGTGAAGACACAGGGTTG
TGCTGTAACAGATGAGCAGCTGCTCTATAGCTTCAACCTGACCAGCCTTCCACAAGCACTTTCAAGTT
ACTCGGGATGCCCGCACATACAGTATAGGGGTGTGCACAGCAGCAGCTGGCTTAGGCCAGGAAGGCTGCA
AGGATGGCGGTGTCTGTCTCTCTGGGAACAAGGAGCTTCTTTGGGCGCCTTGCCATCGATGCACTG
GGATTACAGGCACCAAGATGAAGCAGTCACTTCTGAGTTATGTGAATGGTGATCCTTGCCCTCCAGAACG
GATGATGGCGAGCCCTGTGTCTTCCCCTTCATTTACAAAGGGAAGAGCTATGATGAATGTGTATTAGAGG
GACGAGCGAAACTGTGGTGTAGCAAACTGCAAAATATGATCGTGACCACGAGTGGGGCTTCTGCAGACA
GACCAACAGCTACCGGATGTCTGCGATCATATTTACGTGTGATGAAAGTGAAGATATTGGGAGACCACAA
GTGTTCACTGAAGATCGTGGGTGTGAGGTGACATTTGAGTGAAGACAAAAGTTGTCTGCCCTCCAAAGA
AGATGGAGTGAAGTTTGTTCAGAAGCATAAGACCTATGACTTGCAGCTGCTCTCATCCCTCACGGGTC
CTGGGACTTTGTGCATGAAGGAACTCGTACTTTATCAATCTGTGCCAAAGAGTATACAAAGTCCCCTG
GACTGCTCTGAAAGAGCCAGCATTGCAAGAAGAGTGCCACTGGTCAAGTCCAGTTTTGGGGCTTGTTT
ATACACAAAAATTGGAAGTCATAGATGAAACGGTCATTGTTACTTACTCGAAAGGCTATCCTTGTGGTGG
GAATAAGACTGCATCGTCTGTAATCGAATTGACCTGTGCGAAGACTGTGGGCAGGCTGCATTCAAGAGG
TTTGACAGTGTGACTGCACCTACTACTTTTACTGGTACTCACGGGCTGCCTGCGCGGTGAGGCCTCAGG
AGGTGACCATGGTGAACGGAACGCTCACCAACCCTGTGACCGGCAAGAGCTTCAGCCTCGGCGAGATTTA
TTTTAAGCTCTTCAGCGCCTCTGGAGACATGAGGACCAATGGGGACAACCTGATGAAATCCAGCTC
TCCTCCATCACCAGCTCTTCTTACCCTGCATGCGCTGGTCCCAACATCTGCCAGGTGAAGCCCAATGACC
AGCATTTACAGCAGGAAAGTAGGCACCTCTGACATGACCAAGTACTACGTCCAAGATGGAGATCTGGATGT
GGTGTTCACCTCTTCTCCAAGTGTGGAAAGATAAGACCAAGTTTGTTCCTTCCACCATCTTCTTCCAC
TGTGACCCTCTGGTGAAGGATGGGATCCCAGAGTTCAGCCACGAGACTGCTGACTGCCAGTACCTGTTCT
CCTGGTACACTTCAGCTGTGTCTCTGGGTGTGGACTTTGAGGATGAGAGCGCAGGGCCAGAGTATAA
AGGACTCTCAGAGCGGAGTCAGGCTGTTGGGGCAGTCCTCAGTCTTCTCCTGGTGGCGCTGACTGGCTGC
TTGCTGGCCTTACTGCTGCATAAGAAGGAGAGAAGGGAACTGTGATAAACAAGCTGACCAGCTGCTGCA
CAAGAAGCTCGGGCGTGTCTACAAGTACTCAAAGGTGAGCAAGGAGGAGGAGACAGATGAGAATGAGAC
AGAATGGCTGATGGAAGAGATCCAGGTGCCAGCCCAAGACTAGGCAAGGACGGGCAAGAAAATGGCCAT
ATCACCACCAAGGCGGTGAAAGCAGAAGCTCTCTCGTCCCTGCATGGGGACGACCAGGACAGTGAGGATG
AGGTCCTGACCGTTCAGAGGTGAAAGTCACTCAGGCCGAGGAGCGGAGGTGGAAGCTCACAGCCCCT
GAGAAACCCACAGCGCAAGTCCCTGAAGGAAAGGAGGGTGAAGAGCTGGGGCTGGTCCGAGGTGAGAAG
GCCAGAAAAGGGAAGTTCAGACCCGACAGCGCAAGCCAACAGCCCCTGCCAAGCTGGTGTCTTCCATG
ATGACAGCGACGAAGACCTTTACACATC

ACGCGTACGCGGCCGCTCGAG - GFP Tag - GTTTAA

Protein Sequence: >MG225522 representing NM_010515
 Red=Cloning site Green=Tags(s)

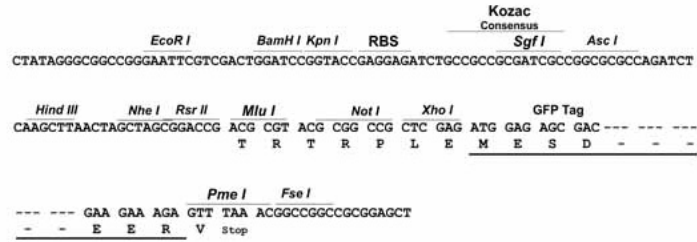
MRAVQLGPVPSGPRVALLPPLLLLLLLAAAGSAQAQAVLDALCSYTWEAVDSKNNNAVYKINVCNGVNGIS
 SCGPTSAICMCDLKTENCRSVGDSLLRSSARSLLEFNMTMGCQPSDSQHRITQTSITFLCGKTLGTPEFVVT
 ATDCVHYFEWRTTAACKKDIKADKEVPCYAFDDKLQKHDLNPLIKLNGGYLVDDSDPDTSLFINVCRDI
 DSLRDPSTQLRVCPAGTAACLLKGNAQAFDVGRPKEGLKLLSKDRLVLYVKEEKEKPDFCNGHSPAIVT
 FVCPSEERREGTIPKLTAKSNCRYEVEWITEYACHRDYLDQSESCSLSSSEQHDITIDLSPLAQYGGSPYVSD
 GREYTFFINVCGDTKVSLCANNKEAAVCQEKKADSTQVKIAGRHNQTLRYSDGDLTLIYSGGDECSGFG
 RMSVINFECKNTAGKDGRGEPVFTGEVDCTYFFTWDTKYACIKEKEDLLCGAINGKKRYDLVSLARHSES
 EQNWEAVDGSQAESKEYFFINVCHRVLQEGKARNCPEDA AVCAVDKNGSKNLGKFVSSPTKEKGIQLSY
 TDGDDCGSDKKISTNITLVCKPGDLESAPVLAARSDGCFYEFWHTAAACVLSKTEGENCTVLDAQAGF
 SFDLSLLTKKNGAYKVE TEKYDFYINVCGPVSMPCQSNAGCQVAKSGKSWNLGLSSTKLTYYDGMQL
 SYRNGTPYNNEKHTPRATLITFLCDRDAGVGFPEYQEEEDNSTYNFRWYTSYACPEEPLCMTDPSMMEQ
 YDLSSLVKSEGGSGNWAYMENSREHVTRRKYLLNVCRLNVPVPGCDRYASACQMKYENHEGSLAETVSI
 SNLGVAKIGPVVEESGSLLELYVNGSACTTSDGQLTTYSTRIHLCVGRGMNSHPIFTFNWECVVSFLWN
 TEAACPIQITITETDQACSIKDPSSGFVFNLSPLNDSAQGHVVLGIGKTFVFNICGAMPACGTVAGKPAYG
 CEAETQIEDIKDLRQRPVGMERSLQLSAEGLTLTYKSSPSDRGTAFIIRFICNDIYPGAPKFLHQD
 IDSTRGIRNTYEFETALACTPSLVDCQVTDPAAGNEYDL SALSMVRKPWTAVDTSAYGKRRHFYLSVCNP
 LPYIPGCHGIALGSCMVSEDNFNLGVVQISQATGNGSLSILYVNGDRCGDQRFSTRIVFECAQTSGSP
 MFQFVNCEYVFWRTVEACPVIREEGDNQVVKDPRHGNLYDLKPLGLNDTIVSVGEYTYL RVCKGLSS
 DVCSAHDGSKAVSSCQEKKGPFQKQVAGLLSQKLT FENGLLKMNYTGGDTCHKVYQRSTTIYFYCDRTT
 QKPVFLKETSDCSYMFEWRTQYACPPFNVTECSVQDAAGNSIDLSSL SRYSDNWEAVTRTGATEHYLINV
 CKSLSPHAGTEPCPEAAVCLLNGSKPVNLGKVRDGPQWTDGVTVLQYVVDGDLCPDKIRRRSTIIRFTCS
 DNQVNSRPLFISAVQDCEYTFSWPTPSACPVKSNTHDDCQVTNPSTGHLFDLSSL SGRAGINASYSEKGL
 VFMSICEENENC GPGVACFGQTRISVGKASKRLSYKDQVQLVYVYENGSPCPSLSDRLYKSVISFVCRPE
 AGPTNRPMLISLDKQCTLFFSWHTPLACEQATECTVRNGSSIIDLSPL IHRTGGYAYDESEDSTDTT
 PDFYINICQPLNPMHGVP CPAGASVCKVPVDGPPIDIGRVTGPPIFNPVANEVYLNFE STHCLADRYMN
 YTSLITFHCKRGVSMGTPKLI RTNDCDFVFEWETPIVCPDEVKTQGCAVTDEQLLYS FNLTSLSTSTFKV
 TRDARTYSIGVCTAAAGLGQEGCKDGGVCLLSGNKGASFGR LASMQLDYRHQDEAVILSYVNGDPCPET
 DDGEPVFPFIYKGSYDECVLEGRAKLWCSKTANYDRDHEWGF CRQNTSYRMSAIFTCDSEDI GRPQ
 VFSERDGEVTFEWKTKVCPKMECKFVQKHKT YDLRLLSSLTGSWDFVHEGNSYFINL CQRVYKGPL
 DCSERASICKKSATGQVQVGLVHTQKLEVIDETVIVTYSKGYPCGGNKTASSVIELTCAKTVGRPAFKR
 FDSVSCITYFYWYSRAACAVRPQEV TMVNGTLTNPVTGKSFSLGEIYFKLFSASGDMRTNGDNYL YEIQL
 SSITSSSY PACAGANICQVKPNQHF SRKVGTSMDTKYVQDGDLDVVFTSSSKCGKDKTKFVSSTIFFH
 CDPLVKDGIPEFSHETADCQYLSWYTSAVCPLGVDFEDESAGPEYKGLSERSQAVGAVLSLLLVALTGC
 LLALLLHKKERRET VINKLTSCTRSSGVS YKYSKVSKEEETDENETEWLMEEIQVPAPRLGKDGQENGH
 ITTKAVKAEALSSLHGDDQDSEDEVLTVPEVKVHSGRGA E VESSQPLRNPQRKSLKEREGERLGLVRGEK
 ARKGGFRPGQRKPTAPAKLVSFHDDSD ELLHI

TRTRPLE - GFP Tag - V

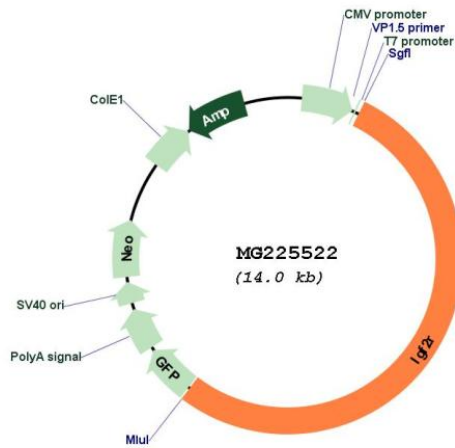
Restriction Sites: SgfI-MluI

Cloning Scheme:

Cloning sites used for ORF Shutting:



Plasmid Map:



ACCN: NM_010515
 ORF Size: 7449 bp

OTI Disclaimer:	The molecular sequence of this clone aligns with the gene accession number as a point of reference only. However, individual transcript sequences of the same gene can differ through naturally occurring variations (e.g. polymorphisms), each with its own valid existence. This clone is substantially in agreement with the reference, but a complete review of all prevailing variants is recommended prior to use. More info
OTI Annotation:	This clone was engineered to express the complete ORF with an expression tag. Expression varies depending on the nature of the gene.
Components:	The ORF clone is ion-exchange column purified and shipped in a 2D barcoded Matrix tube containing 10ug of transfection-ready, dried plasmid DNA (reconstitute with 100 ul of water).
Reconstitution Method:	<ol style="list-style-type: none">1. Centrifuge at 5,000xg for 5min.2. Carefully open the tube and add 100ul of sterile water to dissolve the DNA.3. Close the tube and incubate for 10 minutes at room temperature.4. Briefly vortex the tube and then do a quick spin (less than 5000xg) to concentrate the liquid at the bottom.5. Store the suspended plasmid at -20°C. The DNA is stable for at least one year from date of shipping when stored at -20°C.
RefSeq:	NM_010515.2 , NP_034645.2
RefSeq Size:	8948 bp
RefSeq ORF:	7452 bp
Locus ID:	16004
UniProt ID:	Q07113
Cytogenetics:	17 8.64 cM
Gene Summary:	Acts as a positive regulator of T-cell coactivation, by binding DPP4 (By similarity). Transport of phosphorylated lysosomal enzymes from the Golgi complex and the cell surface to lysosomes. Lysosomal enzymes bearing phosphomannosyl residues bind specifically to mannose-6-phosphate receptors in the Golgi apparatus and the resulting receptor-ligand complex is transported to an acidic prelysosomal compartment where the low pH mediates the dissociation of the complex. This receptor also binds IGF2.[UniProtKB/Swiss-Prot Function]