

Product datasheet for **MG225520**

Pde10a (NM_011866) Mouse Tagged ORF Clone

Product data:

Product Type:	Expression Plasmids
Product Name:	Pde10a (NM_011866) Mouse Tagged ORF Clone
Tag:	TurboGFP
Symbol:	Pde10a
Mammalian Cell Selection:	Neomycin
Vector:	pCMV6-AC-GFP (PS100010)
E. coli Selection:	Ampicillin (100 ug/mL)



[View online »](#)

ORF Nucleotide
Sequence:

>MG225520 representing NM_011866
 Red=Cloning site Blue=ORF Green=Tags(s)

TTTTGTAATACGACTCACTATAGGGCGGCCGGAATTCGTCGACTGGATCCGGTACCGAGGAGATCTGCC
 GCCCGCATCGCC

ATGGAAGATGGACCCTCTAACAATGCGAGTTGCTTCCGAAGGCTGACCGAGTGTTTCCTCAGCCCCAGTT
 TGACGGATGAAAAGGTGAAGGCCTATCTTTCTCTCCATCCCCAGGTATTAGATGAATTTGTTTCTGAAAG
 TGTTAGTGCAGAGACTGTGAAAAAGTGGCTGAAGAGGAAAACCAAAAGCAAAAGATGAACCATCTCCC
 AAGGAAGTCAAGCAGTACCAGGATACGAATATGCAGGGAGTCGTGTACGAGCTGAACAGCTACATAGAGC
 AGCGCCTGGACACGGGCGGGGACAACCCTGCTCCTCTATGAGCTCAGCAGCATCATCAGGATAGCCAC
 AAAAGCCGACGGATTTGCACTGTACTTCTTGGAGAGTGAATAATAGCCTGTGTGTGTTTACACCACC
 GGGATGAAGGAAGCCAACCCCGCTCATCCCTGCAGGGCCATCACCCAGGTACCACCATCTCTGCCT
 ACGTGGCCAAGTCTAGGAAGACGTTGTTGGTAGAGGATATCCTTGGGGATGAGCGATTTCTCGAGGTAC
 TGGCCTGGAATCAGGAACCCGCATCCAGTCTGTTCTTTGCTTGCCATTGCTACTGCCATTGGAGACTTG
 ATTGGCATCCTTGAAGTGTACAGGCACTGGGGCAAAGAGGCCCTTCTGCCTCAGCCATCAGGAGGTTGCAA
 CAGCCAATCTTGCTTGGGCTCCGTAGCAATACACCAGGTGCAGGTGTGTAGAGGTCTCGCCAAACAGAC
 CGAACTGAATGACTTCTACTCGACGTATCAAAGACATACTTTGATAACATAGTTGCCATAGACTCTCTA
 CTTGAACACATCATGATATATGCAAAAAATCTAGTGAACGCCGACCGCTGCGCGCTTCCAGGTGGACC
 ACAAGAACAAGGAGCTGTACTCGGACCTGTTTGACATTGGGGAGGAGAAGGAGGGGAAGCCCATCTTCAA
 GAAGACCAAGGAGATCAGATTTTCCATTGAGAAAGGGATTGCTGGTCAAGTGGCAAGAACAGGCGAAGTC
 TTGAACATTTCCGATGCCTACGCGGACCCTCGCTTAAACAGGGAGGTGGACCTGTACACAGGCTACACCA
 CGAGGAACATTTGTGTATGCCATAGTGAGCCGAGGCAGCGTGATTGGCGTGGTGCAGATGGTGAACAA
 GATCAGCGGTAGCGCCTTCTCCAAGACAGACGAGAACAACCTTCAAGATGTTTGTGTCTTCTGCGCACTG
 GCCTTGCCTGTGCTAACATGTACCACAGGATCCGCCACTCAGAATGCATCTACAGGTTACCATGGAGA
 AGCTTTCTACCACAGCATCTGCACCTCCGAGGAGTGGCAAGGCCTCATGCGCTTCAACCTACCAGCAGC
 CATCTGCCGGACATCGAGCTATTCCACTTTGACATTGGTCTTTTCGAGAACATGTGGCCTGGGATCTTT
 GTCTACATGATCCATCGGTCTTGTGGGACATCCTGTTTTGAACTTGAATAATTTGCGGTTTTATCATGT
 CTGTGAAGAAGAACTATCGGCGGTTTCTTACCACAACGGAAGCATGCAGTCACGGTGGCACACTGCAT
 GTATGCCATACTTCAAAACAACAATGGCCTCTTACAGACCTCGAGCGCAAAGGCCTGCTAATTGCGTGT
 CTGTGCCATGACCTGGACCACAGGGCTTCAGTAACAGCTACCTGCAGAAGTTCGACCACCCCTGGCGG
 CGCTGTACTCCACCTCCACCATGGAGCAACACCCTTCTCCAGACGGTGTCCATCCTTCAGCTGGAAGG
 GCACAATATCTTCTCCACCTGAGCTCCAGCGAGTACGAGCAGGTGCTGGAGATCATCCGAAAGCCATC
 ATCGCCACCGACCTCGCCCTATACTTTGGGAACAGGAAGCAGTTGGAGGAGATGTACCAGACAGGGTCGC
 TGAACCTCCACAACAGTCCCATCGAGACCGTGTATCGGCTTGATGACTGCCTGTGATCTTTGCTC
 TGTGACCAAACTATGGCCAGTTACAAAATTGACAGCGAATGATATATATGCAGAATTCTGGGCTGAGGGT
 GATGAGATGAAGAAGCTGGGCATACAGCCATTCTATGATGGACAGAGACAAGCGAGATGAAGTCCCTC
 AAGGGCAGCTCGGATTCTACAATGCTGTGGCCATTCCCTGCTATACCACCTTACGCAGATCCTCCACC
 CACAGAGCCTCTGCTGAAGGCCTGCAGGGATAACCTCAATCAGTGGGAGAAGGTAATTCGCGGGGAAGAG
 ACAGCAATGTGGATTTACGGCCAGGCCGCGCCTAGCAAGAGCACACCTGAGAAGCTGAACGTGAAGG
 TTGAAGAC

ACGCGTACGCGGCCGCTCGAG - GFP Tag - GTTTAA

Protein Sequence: >MG225520 representing NM_011866
 Red=Cloning site Green=Tags(s)

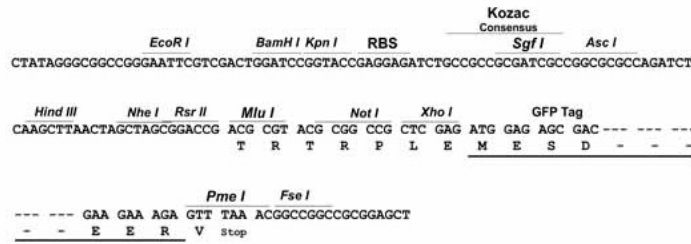
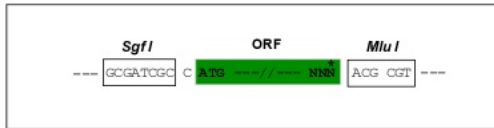
```
MEDGPSNNASCFRRLTECF LSPSLTDEKVKAYLSLHPQVLDEFVSESVSAETVEKWLKRKTNKAKDEPSP
KEVSRYQDTNMQGVVYELNSYIEQRLDTGGDNHLLLYELSSIIIRIATKADGFALYFLGECNNSLCVFIPP
GMKEGQPR LIPAGPITQGT TISAYVAKSRK TLLVEDILGDERFPRGTGLESGTRI QSVLCLPIVTAIGDL
IGILELYRHWGKEAFCLSHQEVATANLAWASVAIHQVQVCRGLAKQTELND FLLDVSKTYFDNIVAIDSL
LEHIMIYAKNLVNADRCALFQVDHKNKELYSDLFDIGEEKEGKPIFKKTK EIRFSIEKGIAGQVARTGEV
LNIPDAYADPRFNREVDLYTGYTTRNILCMPIVSRG SVIGVVQMVNKGISGSAFSKTDENNFKMF AVFCAL
ALHCANMYHRIRHSECIYRV TMEKLSYHSICTSEEWQGLMRFNLPARICRDIELFHF D IGP FENMWPGIF
VYMIHRSCGTSCFELEKLCRFIMSVKKNYRRVPYHNWKH AVTVAHCMYAILQNNNGLFTDLERKGLLIAC
LCHDLDRHGFNSY LQKFDHPLAALYSTSTMEQHHSQT V S I L Q L E G H N I F S T L S S E Y E Q V L E I I R K A I
IATDLALYFGNRKQLEEMYQTGSLNLHNQSHRDRVIGLMMTACDLC SVTKLWPVTKLTANDIYAEFWAEG
DEMKKLGIQPIPMMDRDKRDEVPQQLGFYNAVAIPCYTTLTQILPPTPELLKACRDNLNQWEKVI R G E E
TAMWISGPGPAPSKSTPEKLNKVED
```

TRTRPLE - GFP Tag - V

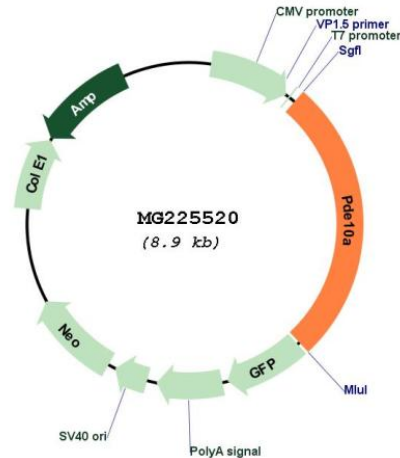
Restriction Sites: SgfI-MluI

Cloning Scheme:

Cloning sites used for ORF Shuttling:



Plasmid Map:



ACCN: NM_011866

ORF Size: 2388 bp

OTI Disclaimer: The molecular sequence of this clone aligns with the gene accession number as a point of reference only. However, individual transcript sequences of the same gene can differ through naturally occurring variations (e.g. polymorphisms), each with its own valid existence. This clone is substantially in agreement with the reference, but a complete review of all prevailing variants is recommended prior to use. [More info](#)

OTI Annotation: This clone was engineered to express the complete ORF with an expression tag. Expression varies depending on the nature of the gene.

Components: The ORF clone is ion-exchange column purified and shipped in a 2D barcoded Matrix tube containing 10ug of transfection-ready, dried plasmid DNA (reconstitute with 100 ul of water).

- Reconstitution Method:
1. Centrifuge at 5,000xg for 5min.
 2. Carefully open the tube and add 100ul of sterile water to dissolve the DNA.
 3. Close the tube and incubate for 10 minutes at room temperature.
 4. Briefly vortex the tube and then do a quick spin (less than 5000xg) to concentrate the liquid at the bottom.
 5. Store the suspended plasmid at -20°C. The DNA is stable for at least one year from date of shipping when stored at -20°C.

RefSeq: [NM_011866.2](#), [NP_035996.2](#)

RefSeq Size: 7717 bp

RefSeq ORF: 2391 bp

Locus ID: 23984

UniProt ID: [Q8CA95](#)

Cytogenetics: 17 A1

Gene Summary: Plays a role in signal transduction by regulating the intracellular concentration of cyclic nucleotides. Can hydrolyze both cAMP and cGMP, but has higher affinity for cAMP and is more efficient with cAMP as substrate. May play a critical role in regulating cAMP and cGMP levels in the striatum, a region of the brain that contributes to the control of movement and cognition.[UniProtKB/Swiss-Prot Function]