

## Product datasheet for **MG225496**

### Amhr2 (NM\_144547) Mouse Tagged ORF Clone

#### Product data:

Product Type:	Expression Plasmids
Product Name:	Amhr2 (NM_144547) Mouse Tagged ORF Clone
Tag:	TurboGFP
Symbol:	Amhr2
Synonyms:	Misiir; Misrii; Mrii
Mammalian Cell Selection:	Neomycin
Vector:	pCMV6-AC-GFP (PS100010)
E. coli Selection:	Ampicillin (100 ug/mL)



[View online »](#)

**ORF Nucleotide Sequence:**

>MG225496 representing NM\_144547  
 Red=Cloning site Blue=ORF Green=Tags(s)

TTTTGTAATACGACTCACTATAGGGCGGCCGGAATTCGTCGACTGGATCCGGTACCGAGGAGATCTGCC  
 GCC**CGGATCGCC**

ATGCTGGGACACTGGGGCTTTGGACACTGCTTCTCGCGCAGCACAAGTATCCCCAAACAGGAGGACCT  
 GTGTGTTCTTTGAGGCTCCTGGAGTGCGGGGAAGCACAAGACTGGGGAAATGGTAGATGCAGGACC  
 AGGCCCCCCAAGGGTATCCGCTGCCTCTACAGCCATTGCTGCTTTGGGATCTGGAATCTTACCCATGGC  
 CGGGCACAAGTGAGATGCAAGGATGCCGAGACAGTGTAGCCAGGCTGTGAGTCCCTCCACTGTGACC  
 CAGTCCCAGAGCCACCCGAACCCAGCTCCACACTTTCACGTGTTCTGTGGCACTGACTTCTGCAA  
 TGCCAATTACAGCCATCTGCCTCCTTCGGGAAACCAAGGGCTCCTGGCCCCAGGAGCCCCAGGCTACC  
 CCAGGTGGGCCCTGTGGATGGCACTGTGCTCCTGGGAATGTTTCTCGTGTGTGCTGAGTAGCATCA  
 TCTTGGCCCTGTACAACGAAAGGCTGCAGAGTGAAGGTGGTCCAGCCAGAGCCCGGCTCAGCGG  
 AGACTGCAGTGAGGAAGTCCAGAGCTGGCCGAGCTGCGTTTCTCCAGGTAATCCAGGAAGGAGTGCAT  
 GCAGTCGTCTGGGCCGGGAGGCTTCAGGGTGAGATGGTAGCCATCAAGGCCCTCCCCCAAGGGCTGTGG  
 CCCAGTCCGAGCTGAGAGGGCTGTGTACCAGCTGCTAGGCCTACAGCATGACCATATCGTTCGCTTTAT  
 CACTGCTGGCCAGGGAGGCCCTGGCCCTCTGCCCTCTGGGCTTTGCTGGTACTGGAAGTGTACCCTAAG  
 GGCTCCTTATGCCACTACTTGACTCAGTACACGAGCGACTGGGGAAGTTCCTTGAGGATGGCTCTGTCCC  
 TGGCAGAGGGCTTGGCTTTTCTCCACGAGGAGCGTTGGCAGGATGGCCAGTACAAACCAGGTATCGCCCA  
 CCGAGACTGAGCAGCCAGAATGTGCTCATTGGGAAGATAGGTGCATGCGCCATCGGGGACTGGGCCTT  
 GCCTTGGTACTCCCTGGTCTTGTCTCAGCCCCCTGCCTTGGCCCCACTCAACCCGAGGCCCGCTGCCA  
 TTTTGGAGGCTGGCACCCAGCGGTACATGGCTCCAGAGCTTTGGACAAGACTTAGACTTGCAAGGACTG  
 GGTACAGCTCTCCAGAGAGCGGATGTTTACTCTCTGGCGCTACTACTGTGGGAGATCCTGAGCCGCTGT  
 TCCGATTTGAGGCCTGACCACAGACCACCACCTTTCCAATTGGCTTATGAGGCAGAACTGGGAGCAATC  
 CCAGTGCCTGTGAGCTCTGGGCCCTGGCAGTGGAGGAGAGGAAGCGCCCCAACATCCCATCCACTTGGAG  
 CTGCTCTGCCACAGACCCTCGGGGGCTGAGGGAGCTCCTGGAAGATTGCTGGGACGCAGACCAGAAGCA  
 CGGCTGACAGCTGAGTGTGTGCAGCAGCGCTGGCAGCCCTGGCTTACCCTCACGGGGCGTCTCTTTCC  
 CAGAGAGTCCACAGGGCTGCCAGAGAACTGCCTTTCAGCTCCCCTCTGCCGTTTTCCCTGTCCGCC  
 TCAGCAGAGTCTTGTCTCCTCAGTGTTACGAAGGCCCTGGCTTAGGAGTCCCGATCCTGTAGGCGAC  
 ACTGTTCAAGTGTATGTAATGAG

**ACGCGTACGCGGCCGCTCGAG - GFP Tag - GTTTAA**

**Protein Sequence:**

>MG225496 representing NM\_144547  
 Red=Cloning site Green=Tags(s)

MLGTLGLWTLPPAAAQVSPNRRTCVFFEAPGVRGSKTLGEMVDAGPDPKIRCLYSHCCFGIWNLTHG  
 RAQVEMQGCRRSDPEPGCESLHCDPVRAHPNPSSTLFTCSGCTDFCNANYSHLPPSGNQAGPQPQAT  
 PGGPVWMAALLLGMFLVLLSSIIILALLQRKACRVQGGSDPEPGSGDCSEELPELAELRFQVIEGGH  
 AVVWAGRLQGEMVAIKAFPPRAVAQFRAERAVYQLLGLQHDHIVRFITAGQGGPGLPSGPLLVLLELYPK  
 GSLCHYLTYTSDWSSLRMALSLAEGFLHEERWQDGQYKPGIAHRDLSSQNVLIREDRSCAIGDLGL  
 ALVLPGLAQPPALAPTQPRGPAAILAEGTQRYMAPELLDKTLDLQDWGTALQRADVSLALLLWEILSRC  
 SDLRPDHRPPPFQLAYEAE LGSNPSACELWALAVEERKRPNIPTWSCSATDPRGLRELLEDWCWDADPEA  
 RLTAECVQQRLLAALAYPHGASSFPESPQGCPEENCLSAPASAVFPCRPPQSSCLLSVQQGPGSRSPDPVGD  
 TVQVYVNE

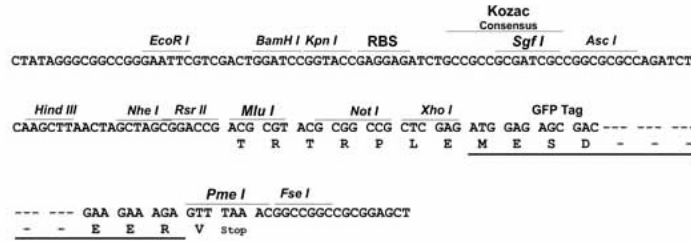
**TRTRPLE - GFP Tag - V**

**Restriction Sites:**

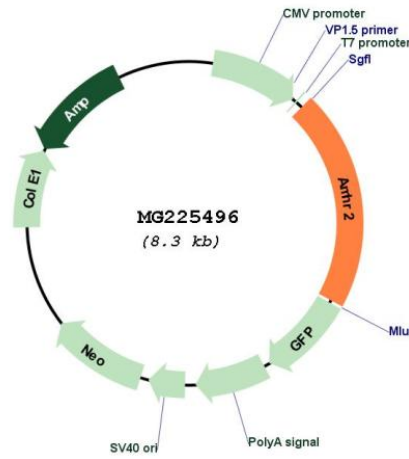
Sgfl-MluI

Cloning Scheme:

Cloning sites used for ORF Shutting:



Plasmid Map:



ACCN: NM\_144547  
 ORF Size: 1704 bp

<b>OTI Disclaimer:</b>	<p>Due to the inherent nature of this plasmid, standard methods to replicate additional amounts of DNA in E. coli are highly likely to result in mutations and/or rearrangements. Therefore, OriGene does not guarantee the capability to replicate this plasmid DNA. Additional amounts of DNA can be purchased from OriGene with batch-specific, full-sequence verification at a reduced cost. Please contact our customer care team at <a href="mailto:custsupport@origene.com">custsupport@origene.com</a> or by calling 301.340.3188 option 3 for pricing and delivery.</p> <p>The molecular sequence of this clone aligns with the gene accession number as a point of reference only. However, individual transcript sequences of the same gene can differ through naturally occurring variations (e.g. polymorphisms), each with its own valid existence. This clone is substantially in agreement with the reference, but a complete review of all prevailing variants is recommended prior to use. <a href="#">More info</a></p>
<b>OTI Annotation:</b>	<p>This clone was engineered to express the complete ORF with an expression tag. Expression varies depending on the nature of the gene.</p>
<b>Components:</b>	<p>The ORF clone is ion-exchange column purified and shipped in a 2D barcoded Matrix tube containing 10ug of transfection-ready, dried plasmid DNA (reconstitute with 100 ul of water).</p>
<b>Reconstitution Method:</b>	<ol style="list-style-type: none"><li>1. Centrifuge at 5,000xg for 5min.</li><li>2. Carefully open the tube and add 100ul of sterile water to dissolve the DNA.</li><li>3. Close the tube and incubate for 10 minutes at room temperature.</li><li>4. Briefly vortex the tube and then do a quick spin (less than 5000xg) to concentrate the liquid at the bottom.</li><li>5. Store the suspended plasmid at -20°C. The DNA is stable for at least one year from date of shipping when stored at -20°C.</li></ol>
<b>RefSeq:</b>	<p><a href="#">NM_144547.2</a>, <a href="#">NP_653130.2</a></p>
<b>RefSeq Size:</b>	<p>1947 bp</p>
<b>RefSeq ORF:</b>	<p>1707 bp</p>
<b>Locus ID:</b>	<p>110542</p>
<b>UniProt ID:</b>	<p><a href="#">Q8K592</a></p>
<b>Cytogenetics:</b>	<p>15 57.58 cM</p>
<b>Gene Summary:</b>	<p>On ligand binding, forms a receptor complex consisting of two type II and two type I transmembrane serine/threonine kinases. Type II receptors phosphorylate and activate type I receptors which autophosphorylate, then bind and activate SMAD transcriptional regulators. Receptor for anti-Muellerian hormone.[UniProtKB/Swiss-Prot Function]</p>