

## Product datasheet for **MG225493**

### Rel (NM\_009044) Mouse Tagged ORF Clone

#### Product data:

Product Type:	Expression Plasmids
Product Name:	Rel (NM_009044) Mouse Tagged ORF Clone
Tag:	TurboGFP
Symbol:	Rel
Synonyms:	c-Rel
Mammalian Cell Selection:	Neomycin
Vector:	pCMV6-AC-GFP (PS100010)
E. coli Selection:	Ampicillin (100 ug/mL)



[View online »](#)

**ORF Nucleotide Sequence:**

>MG225493 representing NM\_009044  
 Red=Cloning site Blue=ORF Green=Tags(s)

TTTTGTAATACGACTCACTATAGGGCGGCCGGAATTCGTCGACTGGATCCGGTACCGAGGAGATCTGCC  
 GCC**GCGATCGCC**

ATGGCCTCGAGTGGATATAATCCATACGTAGAATAATTGAACAGCCAAGGCAGAGGGGAATGCGGTTTA  
 GATACAAGTGTGAAGGGGATCAGCAGGTAGCATCCAGGGGAGCGCAGCACAGACAACAACCGGACATA  
 CCCGTCTGTCCAGATTATGAACACTATGGAAAAGGAAAAATAAGAATTACATTAGTAACAAGAATGAT  
 CCATATAAGCCTCATCCTCATGATTTAGTTGGAAAAGATTGCAGAGATGGATACTATGAAGCAGAATTTG  
 GACCAGAACGCAGACCTTTGTTTTTTCAAATTTGGGTATTCGGTGTGTAAGAAAAAGGAAGTGAAGA  
 AGCTATTATTTAAGGATTAGTGCAGGAATCAATCCTTTCAATGTCCCTGAACAGCAGCTGCTGGACATT  
 GAAGACTGCGACCTCAATGTGGTGAAGCTGTGTTTTCAAGTTTTCTTCTGATGAACATGGTAACCTCA  
 CAACTGCTCTGCCTCCCATTGTTTCTAACCAATTTATGACAACCGTGCCCAAACTACTGCAGAATTAAG  
 GATCTGCCGTGTGAACAAGAAGTGTGGAAGTGCAGGGGAGGAGATGAAATATTTCTGCTTTGTGACAAA  
 GTTCAGAAAGATGATATAGAAGTTCGTTTTGTGTTGAATGACTGGGAAGCCAGAGGTGTTTTTCAAG  
 CTGATGTACACCGCAAGTAGCCATTGTTTTCAAGACTCCTCCGTATTGCAAAGCTATACTGGAGCCTGT  
 GACAGTAAAAATGCAGCTGCGGAGGCTTCTGACCAGGAAGTTAGTGAGTCTATGGATTTTCAGATACCTG  
 CCAGATGAAAAAGATGCATATGGCAATAAATCAAAGAAACAAAAACAACCTGATTTTTTCAGAACTGC  
 TGCAAGATTGTGGTCACTTTACTGAGAAACCAAGAAGTCCCTCTGGGATCAACTGGAGAAGGAAGATT  
 CATCAAAAAGAATCAAACCTATTTTCTCATGGTACAGTTTTACCAGAAATGCCAGGTCTTCAGGAGTT  
 CCAGGGCAAGCTGAACCTTACTATTCTCATGCGGGTCCATCTCGAGTGGATTGCCACATCACCCACCAG  
 CCATACCCTCAGTGGCCATCAGCCTACAAGCTGGCCACCAGTACTCACCCACCTCACACCCAGTCAAG  
 TACAAATACCCTGAGTACTTTCTCAGCGGAACACTTTCTCTAATTCACAAGGTATCCTTCCATTCTTA  
 GAAGGGCCTGGTGTGAGCGACTTGAAGTGCATCTAATTCGTGCCTTTATACTCTGATGACCTAGCTAGAA  
 TGGAAACGCCATCCATGTCACTACTGACTTATACAGTATCTCTGATGTCAACATGCTATCTACTCGGCC  
 TCTGAGTGTGATGGCACCCAGCACTGATGGCATGGGGGACACTGACAACCAAGACTTGTGAGCATCAAT  
 CTTGAAAACCCCTCATGTAATGCCAGGCTAGGCCCAAGAGACCTGAGACAACATACATCAGATGTCTCCTG  
 CCAGTCTGTCCGCGGCCACCAGCTCCAGTTCTGTTTTGTTTACAGTCAAGTGCATTTGATAGATCAAA  
 CTTGAGTGTGATAGATAATGGCCTGATGAATGAGCCTGGACTATCAGATGACGCAATAATCCTACCTTT  
 GTTCAGAGCAGTCACTATTCAAGTGTAACTCTGCAAAGTGAAGTCAAGTCAAGTCACTTCCATATG  
 GTTTTTTAAAAATA

**ACGCGTACGCGGCCGCTCGAG - GFP Tag - GTTTAA**

**Protein Sequence:**

>MG225493 representing NM\_009044  
 Red=Cloning site Green=Tags(s)

MASSGYNPYVEIIEQPRQRGMFRYKCEGRSAGSIPGERSTDNNRTPSVQIMNYYGKGIKIRITLVTKND  
 PYKPHPHDLVGKDCRDGYEAEFGPERRPLFFQNLGIRCVKKEVKEAIIILRISAGINPFNVPEQQLLDI  
 EDCDLNVVRLCFQVFLPDEHGNFTTALPPIVSNPIYDNRAPNTAELRICRVNKNCGSVRGGDEIFLLCDK  
 VQKDDIEVRFVLNDWEARGVFSQADVHRQVAIVFKTPPYCKAILEPVTVMQLRRPSDQEVSESMDFRYL  
 PDEKDAYGNKSKKQKTTLIFQKLLQDCGHFTEKPRTPAPLSTGEGRF IKKESNLF SHGTVLPMPRSSGV  
 PGQAEPYSSCGSISGLPHHPAIPVAHQPTSWPPVTHPTSHPVSTNTLSTFSAGTSSNSQILPFL  
 EGPVSDLSASNSCLYNPDDLARMETPSMPTDLYSISDVNMLSTRPLSVMAPSTDGMGMDTNPRLVSI  
 LENPSCNARLGRDLRQLHQMPASLSAGTSSSVFVSQSDAFDRSNFSCVDNGLMNEPGLSDDANNPTF  
 VQSSHYSVNTLQSEQLSDPFTYGFCKI

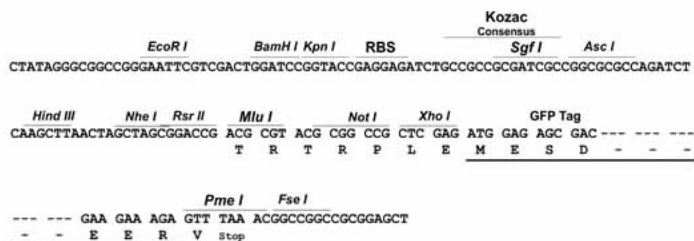
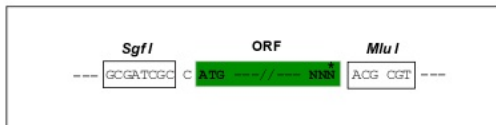
**TRTRPLE - GFP Tag - V**

**Restriction Sites:**

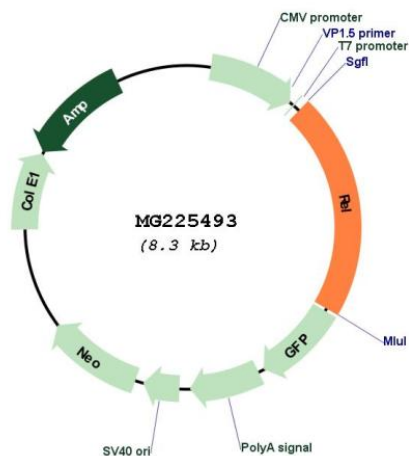
Sgfl-MluI

Cloning Scheme:

Cloning sites used for ORF Shutting:



Plasmid Map:



ACCN: NM\_009044  
 ORF Size: 1764 bp

<b>OTI Disclaimer:</b>	The molecular sequence of this clone aligns with the gene accession number as a point of reference only. However, individual transcript sequences of the same gene can differ through naturally occurring variations (e.g. polymorphisms), each with its own valid existence. This clone is substantially in agreement with the reference, but a complete review of all prevailing variants is recommended prior to use. <a href="#">More info</a>
<b>OTI Annotation:</b>	This clone was engineered to express the complete ORF with an expression tag. Expression varies depending on the nature of the gene.
<b>Components:</b>	The ORF clone is ion-exchange column purified and shipped in a 2D barcoded Matrix tube containing 10ug of transfection-ready, dried plasmid DNA (reconstitute with 100 ul of water).
<b>Reconstitution Method:</b>	<ol style="list-style-type: none"> <li>1. Centrifuge at 5,000xg for 5min.</li> <li>2. Carefully open the tube and add 100ul of sterile water to dissolve the DNA.</li> <li>3. Close the tube and incubate for 10 minutes at room temperature.</li> <li>4. Briefly vortex the tube and then do a quick spin (less than 5000xg) to concentrate the liquid at the bottom.</li> <li>5. Store the suspended plasmid at -20°C. The DNA is stable for at least one year from date of shipping when stored at -20°C.</li> </ol>
<b>RefSeq:</b>	<a href="#">NM_009044.3</a>
<b>RefSeq Size:</b>	2584 bp
<b>RefSeq ORF:</b>	1767 bp
<b>Locus ID:</b>	19696
<b>Cytogenetics:</b>	11 14.36 cM