

Product datasheet for **MG225459**

II2 (NM_008366) Mouse Tagged ORF Clone

Product data:

Product Type: Expression Plasmids
Product Name: II2 (NM_008366) Mouse Tagged ORF Clone
Tag: TurboGFP
Symbol: II2
Synonyms: II-2
Mammalian Cell Selection: Neomycin
Vector: pCMV6-AC-GFP (PS100010)
E. coli Selection: Ampicillin (100 ug/mL)
ORF Nucleotide Sequence: >MG225459 representing NM_008366
Red=Cloning site Blue=ORF Green=Tags(s)

TTTTGTAATACGACTCACTATAGGGCGGCCGGAATTCGTCGACTGGATCCGGTACCGAGGAGATCTGCC
GCC**CGATCGCC**

ATGTACAGCATGCAGCTCGCATCCTGTGTACATTGACACTTGTGCTCCTTGTCACAGCGCACCCACTT
CAAGCTCCACTTCAAGCTCTACAGCGGAAGCACAGCAGCAGCAGCAGCAGCAGCAGCAGCAGCAGCAGCA
CCTGGAGCAGCTGTTGATGGACCTACAGGAGCTCCTGAGCAGGATGGAGAATTACAGGAACCTGAAACT
CCCAGGATGCTCACCTTCAAATTTACTTGCCCAAGCAGGCCACAGAATTGAAAGATCTTCAGTGCCTAG
AAGATGAACTTGGACCTCTGCGCATGTTCTGGATTTGACTCAAAGCAAAGCTTCAATTGGAAGATGC
TGAGAATTTTCATCAGCAATATCAGAGTAACTGTTGTAATAAAAGGGCTCTGACAACACATTTGAGTGC
CAATTCGATGATGAGTCAGCAACTGTGGTGGACTTTCTGAGGAGATGGATAGCCTTCTGTCAAAGCATCA
TCTCAACAAGCCCTCAA

ACGCGTACGCGGCCGCTCGAG - GFP Tag - GTTTAA

Protein Sequence: >MG225459 representing NM_008366
Red=Cloning site Green=Tags(s)

MYSMQLASCVTLLVLLVNSAPTSSTSSSTAEAQQQQQQQQQHLEQLLMDLQELLSRMENYRNLKL
PRMLTFKFYLPKQATELKDLCLEDELGPLRHVLDLTQSKSFQLEDAENFISNIRVTVVKKGSDNTFEC
QFDDESATVVDFLRRWIAFCQSIISTSPQ

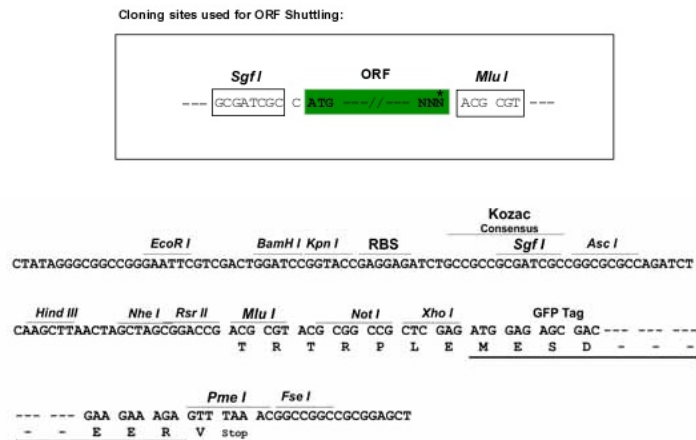
TRTRPLE - GFP Tag - V

Chromatograms: https://cdn.origene.com/chromatograms/ja2499_b08.zip



Restriction Sites: SgfI-MluI

Cloning Scheme:



ACCN: NM_008366

ORF Size: 507 bp

OTI Disclaimer: The molecular sequence of this clone aligns with the gene accession number as a point of reference only. However, individual transcript sequences of the same gene can differ through naturally occurring variations (e.g. polymorphisms), each with its own valid existence. This clone is substantially in agreement with the reference, but a complete review of all prevailing variants is recommended prior to use. [More info](#)

OTI Annotation: This clone was engineered to express the complete ORF with an expression tag. Expression varies depending on the nature of the gene.

Components: The ORF clone is ion-exchange column purified and shipped in a 2D barcoded Matrix tube containing 10ug of transfection-ready, dried plasmid DNA (reconstitute with 100 ul of water).

Reconstitution Method:

1. Centrifuge at 5,000xg for 5min.
2. Carefully open the tube and add 100ul of sterile water to dissolve the DNA.
3. Close the tube and incubate for 10 minutes at room temperature.
4. Briefly vortex the tube and then do a quick spin (less than 5000xg) to concentrate the liquid at the bottom.
5. Store the suspended plasmid at -20°C. The DNA is stable for at least one year from date of shipping when stored at -20°C.

Note: Plasmids are not sterile. For experiments where strict sterility is required, filtration with 0.22um filter is required.

RefSeq: [NM_008366.3](#), [NP_032392.1](#)

RefSeq Size: 955 bp

RefSeq ORF: 510 bp

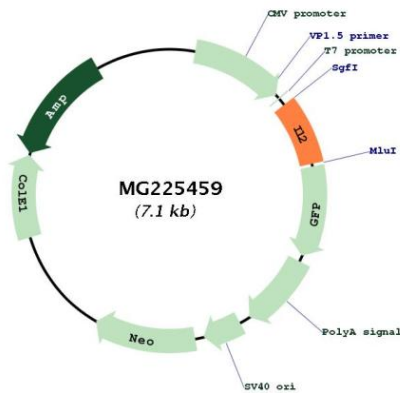
Locus ID: 16183

UniProt ID: [P04351](#)

Cytogenetics: 3 18.3 cM

Gene Summary: Produced by T-cells in response to antigenic or mitogenic stimulation, this protein is required for T-cell proliferation and other activities crucial to regulation of the immune response. Can stimulate B-cells, monocytes, lymphokine-activated killer cells, natural killer cells, and glioma cells.[UniProtKB/Swiss-Prot Function]

Product images:



Circular map for MG225459