

## Product datasheet for **MG225443**

### **Ccdc112 (NM\_001160399) Mouse Tagged ORF Clone**

#### **Product data:**

Product Type:	Expression Plasmids
Product Name:	Ccdc112 (NM_001160399) Mouse Tagged ORF Clone
Tag:	TurboGFP
Symbol:	Ccdc112
Synonyms:	8430438M01Rik; AW108467
Mammalian Cell Selection:	Neomycin
Vector:	pCMV6-AC-GFP (PS100010)
E. coli Selection:	Ampicillin (100 ug/mL)



[View online »](#)

**ORF Nucleotide Sequence:**

>MG225443 representing NM\_001160399  
 Red=Cloning site Blue=ORF Green=Tags(s)

TTTTGTAATACGACTCACTATAGGGCGGCCGGAATTCGTCGACTGGATCCGGTACCGAGGAGATCTGCC  
 GCC**CGATCGCC**

ATGGCGGCTCTGACTACGGTGGTGGTGGCGGCGCGGCAACAGCAGTCGCGGGGCGGTGGCGGGGCGG  
 GCGCGGCTGCGGGACCGCGTGGGAGCGCGCCGACCGCAACAGAGTGATGGCGGCTGTAGTGCTTC  
 AGGTGGAATTCGTTCTTTTCAGCTTCAAACTGGAAACAGAAAGTTAGTCGGACGAAGAAAGCAGAATTC  
 ATACGTACAGCAGAAAAATTTAAAAACCAAGTTATTGTCATAGAAAAAGATAAACACAGTCATTTCTACA  
 ACCAAAGAGGCGACTTCAGAAGTATGCTGGAAGAACTGGAAAACTGATCAACAGCAG  
 GAAGACAGAAAGAGCAAAATCCAGCAACAGTTGGCCAAGATACATAACAACGTAAGAACTTCAGAAC  
 CAGCTGAAAGATGTGAAGCCACACCTGATTTTGTGAGAAGCTCAGAGAAATGATGGAAGAAATGAAA  
 ATGCAATCAATACTTTTAAAGAAGAAGCAGAGACTAATATATGAAGAGCTTATTCAGGAAGAGAAAAACA  
 CAATAATGAGCTGAGTGCCTCCAGGAGGATCGAGTCTGGGCGCTGGTAATTCGGAACAGAGAAA  
 GCTTTTCAGAGCCATCTCAAGCAAAGTCCCGTAGACAGAGTGACACAGAGGACGCTTCAGAACAAAGTGG  
 TAGAATTTGAAAAATTCCTCCAGCAAACGGGAGGGCGGCAGGGGGGCTGGGATGCCTTGGACCACAGAA  
 CTTTGTGAAAGTGAGGAACAAACATAAGGGGAAGCCGACCTTTATGAAGGAGTTGTAGAACACCTTCGG  
 GGAAGAACTCTGGATGAAGTTCAGCAACATGAGAAGTGGTACCAAAAATTCCTGACTTTAGAAGAAAAA  
 AAAAGAGTCTATTCAAATTTGGAAAACCAAAAGCAGCAAAAGAAGGAGGAAATACTCAAGTAAAAGA  
 AAAGGTGGACACCGTGCCTCTGCCTTCTCAAAGCAAAGCAGAAGATAGTCCAAGCAGAGAGAGGAACAG  
 AGGAAGAAGCAGAAGCTGGCAGTGAAGCTTGAAGAAGCGGAAGAGTCTAGAGATGTCAAGCAAGCTTG  
 CTTCCAGCTCAGAGAGGAGGAAGAGAAGGAGAAAGCAGCAGAGAGAGCGGCAGCTCAAGCT  
 CAAGCTGCTCCTGGAGAGCTACACCCAGCAGAGCGGGAGCAGGAAGAGTTCTGAGGCTTGAGCAGGAG  
 ATAAAGGAAAAGCAGAGAAGGCAGAGAAGAGGAAAGACTGCTGCGGATGAGCTTGCAGGTTTCAAGAAA  
 GAGATTTACATAAACTCGAATTGAAAATCTAGATAGACAGGCAAAAGAAGAAGAGAAGGCAGAAAAACA  
 AAGGCGACTGACAAAATTAAGAAAAGGTTGAAAATAATGTCAGTAGAGATCCTTCTAGGCTTTACAAA  
 CCTACCAAAGGCTGGGAAGAACGAACCAAAAAGATAGGTCGTCAGGCTCTGGGCCACTTCTCCATATCC  
 CACACAGGGCCATTCTACCTGGCGACAAGGAATC

**ACGCGTACGCGGCCGCTCGAG** – GFP Tag – GTTTAA

**Protein Sequence:**

>MG225443 representing NM\_001160399  
 Red=Cloning site Green=Tags(s)

MAALTTVVVAAAAATAVAGAVAGAGAAAAGTGVGAAPTQQSDGGCSASGGIRSFQLQNWKQKVSRTKKAEF  
 IRTAEKFNQVIVIEKDKHSHFYNQRGDFRTEYNMLEELENKLSNRKTERAKIQQLAKIHNNVKKLQNL  
 QLKDVKPTPDFVEKLRMMEEIENAINTFKEEQRLIYEELIQEEKTTNNELSAVSRRIESWALGNSETEK  
 AFRAISSKVPVDRVTQRTLPEQVVEFEKFLQQTGGRQGGWDALDHQNFVKVRNKHGKPTFMKEVVEHLP  
 GRTLDEVQQHEKWYQKFLTLEEKKESIQNWKTKKQKKEEILKLKEKVDVPLPSQSKAEDSPKQREEQ  
 RKKQKLAVEAWKKRKSLEMSAKLASQLREEEERKQQRERQRQSKLKLLESYTQQRREQEFLRLEQE  
 IKEKAIEKRRKTADELARFQERDLHKLELKIILDRQAKKEEKAQRRRLTKLKEKVENNVSRDPSRLYK  
 PTKGWEERTKKIGPSGSGPLLIHPHRAIPTWRQGI

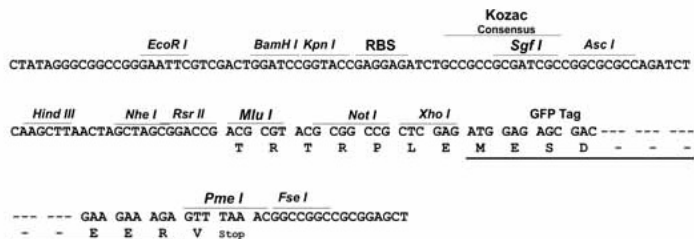
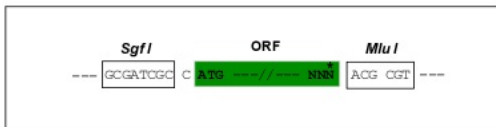
**TRTRPLE** – GFP Tag – V

**Restriction Sites:**

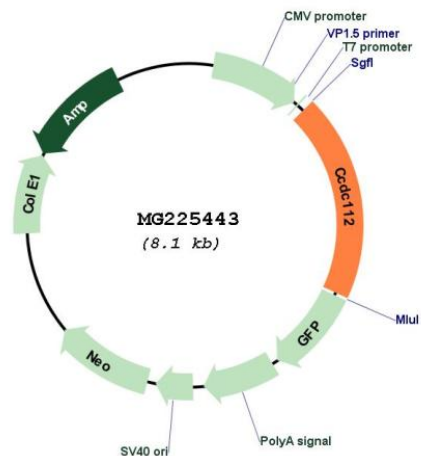
Sgfl-MluI

Cloning Scheme:

Cloning sites used for ORF Shutting:



Plasmid Map:



<b>ACCN:</b>	NM_001160399
<b>ORF Size:</b>	1575 bp
<b>OTI Disclaimer:</b>	The molecular sequence of this clone aligns with the gene accession number as a point of reference only. However, individual transcript sequences of the same gene can differ through naturally occurring variations (e.g. polymorphisms), each with its own valid existence. This clone is substantially in agreement with the reference, but a complete review of all prevailing variants is recommended prior to use. <a href="#">More info</a>
<b>OTI Annotation:</b>	This clone was engineered to express the complete ORF with an expression tag. Expression varies depending on the nature of the gene.
<b>Components:</b>	The ORF clone is ion-exchange column purified and shipped in a 2D barcoded Matrix tube containing 10ug of transfection-ready, dried plasmid DNA (reconstitute with 100 ul of water).
<b>Reconstitution Method:</b>	<ol style="list-style-type: none"><li>1. Centrifuge at 5,000xg for 5min.</li><li>2. Carefully open the tube and add 100ul of sterile water to dissolve the DNA.</li><li>3. Close the tube and incubate for 10 minutes at room temperature.</li><li>4. Briefly vortex the tube and then do a quick spin (less than 5000xg) to concentrate the liquid at the bottom.</li><li>5. Store the suspended plasmid at -20°C. The DNA is stable for at least one year from date of shipping when stored at -20°C.</li></ol>
<b>RefSeq:</b>	<a href="#">NM_001160399.1</a> , <a href="#">NP_001153871.1</a>
<b>RefSeq Size:</b>	2818 bp
<b>RefSeq ORF:</b>	1578 bp
<b>Locus ID:</b>	240261
<b>Cytogenetics:</b>	18 C