

Product datasheet for **MG225418**

Kcnmb3 (NM_001195074) Mouse Tagged ORF Clone

Product data:

Product Type: Expression Plasmids
Product Name: Kcnmb3 (NM_001195074) Mouse Tagged ORF Clone
Tag: TurboGFP
Symbol: Kcnmb3
Synonyms: EG435726; Gm5707
Mammalian Cell Selection: Neomycin
Vector: pCMV6-AC-GFP (PS100010)
E. coli Selection: Ampicillin (100 ug/mL)
ORF Nucleotide Sequence: >MG225418 representing NM_001195074
Red=Cloning site Blue=ORF Green=Tags(s)

TTTTGTAATACGACTCACTATAGGGCGGCCGGAATTCGTCGACTGGATCCGGTACCGAGGAGATCTGCC
GCC**CGATCGCC**

ATGCAGCCCTTCAGCATCCCTGTCCAAATCACGCTACAGGGTGGCCGGAGGCGCCAAGGGAGGACAGCAC
TTCCGGCCTCGGGCAAATCAATGGAGATCCCCTGAAGGTGCACCCAAAGCTTCCATCAAGCGCTGGTGA
GGACCGGCCATGCTGCTGGCGTGGCCATGATGGCTTCTCTGTACTGATGTTCTTCTGTTGGGGACC
ACTGTGTTGAAGCCCTTCATGCTCAGATCTCCAGAGAAGAATCAAAGTGCACCACTGTCCACACACACA
TTGTGGATGACGGGCTGGACTTTTCTTACCTGTGAGGGTAGCTGCCAGGACCACGGGAGATCCCATG
CCTGCAGGTGTTGTAACCTGAGCCACTCGGGACAGAAAGTGCTTCTCCACTACGACGACGAGGCCATC
AGGACCAACCCCAAGTGCTTTTACACACCAAGTGTACGGAGACCGGGATGATCTGCTCAACAGCGTCC
TGGACATCAAGGAATTCTTCGATCACAACAATGGAAGTTTCCCCTGTTTCTACAGTCCCAGTGGCCCTT
GGGAGTTGTTCTGAGGAAGTCTGGCCACAAGTTGCTTTCACTGCTTATTTGGCCTTTATTGACTTTG
CTGGGAGGCGCCCTGATTGTTGGCTTGGTTAGGCTAACACAACATCTGTCCTTTCAGTGTGAACAGTACA
GCACAGTGGTAAGAGCT

ACGCGTACGCGGCCGCTCGAG - GFP Tag - GTTTAA



[View online »](#)

Protein Sequence: >MG225418 representing NM_001195074
Red=Cloning site Green=Tags(s)

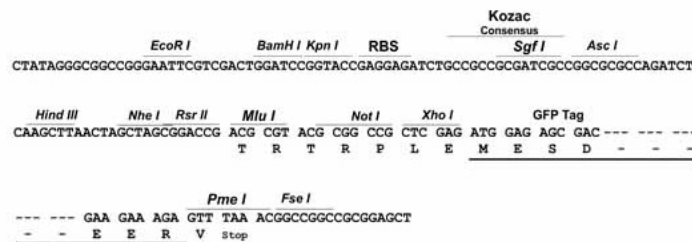
MQPFSSIPVQITLQGGRRRQGRALPASGKINGDPLKVHPKLPSSAGEDRAMLLGVAMMASSVLMFFLLGT
 TVLKPFMLRSPREESNCTTVHITHIVDDGLDFSTCEGSCQDHGRSPCLQVFNLSHSGQKVLVLLHYDDEAI
 RTNPKCFYTPKCHGDRDDLNSVLDIKEFFDHNNGTFFPCFYSPDGPLGVVLRKSGHKVVFHCLFWPLLLT
 LGGALIVGLVRLTQHLFQCEQYSTVVRA

TRTRPLE - GFP Tag - V

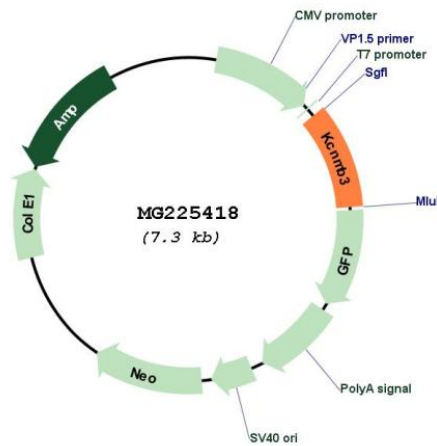
Restriction Sites: SgfI-MluI

Cloning Scheme:

Cloning sites used for ORF Shutting:



Plasmid Map:



ACCN: NM_001195074

ORF Size: 717 bp

OTI Disclaimer:	The molecular sequence of this clone aligns with the gene accession number as a point of reference only. However, individual transcript sequences of the same gene can differ through naturally occurring variations (e.g. polymorphisms), each with its own valid existence. This clone is substantially in agreement with the reference, but a complete review of all prevailing variants is recommended prior to use. More info
OTI Annotation:	This clone was engineered to express the complete ORF with an expression tag. Expression varies depending on the nature of the gene.
Components:	The ORF clone is ion-exchange column purified and shipped in a 2D barcoded Matrix tube containing 10ug of transfection-ready, dried plasmid DNA (reconstitute with 100 ul of water).
Reconstitution Method:	<ol style="list-style-type: none">1. Centrifuge at 5,000xg for 5min.2. Carefully open the tube and add 100ul of sterile water to dissolve the DNA.3. Close the tube and incubate for 10 minutes at room temperature.4. Briefly vortex the tube and then do a quick spin (less than 5000xg) to concentrate the liquid at the bottom.5. Store the suspended plasmid at -20°C. The DNA is stable for at least one year from date of shipping when stored at -20°C.
RefSeq:	NM_001195074.1 , NP_001182003.1
RefSeq Size:	720 bp
RefSeq ORF:	720 bp
Locus ID:	100502876
Cytogenetics:	3 A3