

Product datasheet for **MG225401**

Cldn14 (NM_019500) Mouse Tagged ORF Clone

Product data:

Product Type: Expression Plasmids
 Product Name: Cldn14 (NM_019500) Mouse Tagged ORF Clone
 Tag: TurboGFP
 Symbol: Cldn14
 Synonyms: AI851731
 Mammalian Cell Selection: Neomycin
 Vector: pCMV6-AC-GFP (PS100010)
 E. coli Selection: Ampicillin (100 ug/mL)
 ORF Nucleotide Sequence: >MG225401 representing NM_019500
 Red=Cloning site Blue=ORF Green=Tags(s)

TTTTGTAATACGACTCACTATAGGGCGGCCGGAATTCGTCGACTGGATCCGGTACCGAGGAGATCTGCC
 GCC**CGATCGCC**

ATGGCCAGCACAGCGGTCCAGCTCCTAGGCTTCTGCTTAGCTTCTGGGCATGGTGGGAACGCTCATCA
 CCACCATCTGCCACACTGGCGGAGGACGGCCATGTGGGCACCAACATCCTGACTGCCGTGCTACCT
 GAAGGGACTGTGGATGGAATGTGTGTGGCACAGCACAGGCATCTACCAGTGCAGATCTACCGCTCACTG
 CTGGCGCTGCCCCGGGATCTGCAGGCCGCCGGGCGCTCATGGTCATCTCCTGCCTGTTGTCGGGCATGG
 CCTGCGCCTGCGCAGTAGTGGGCATGAAGTGCACACGCTGCGCCAAAGGCACACCCGCCAAGACCACCTT
 TGCAGTGTGGGGGCGCACTCTTCTGCTGGCCGGCCTGCTGTGCATGGTGGCCGTGTCCTGGACCAGG
 AATGACGTGGTGCAGAATTTTTATAACCCGCTGCTGCCAGTGGCATGAAGTTTGAATCGGCCAGGCC
 TGTACCTGGGCTTCATCTCCTCATCCCTGTCTCATCGGGGACCCCTGCTCTGCTTATCCTGCCAGGA
 CGAGGCCCCCTACAGACCCTACCCGCCAGTCCAGGGCCGGAGCTACCACCAGGCTACCGCCCTGCC
 TACCGCCACCAGCGCCTACAAGGACAACCGTGCCTCGGTGACCTCAGCCGCGCACAGTGGGTACA
 GGCTGAATGACTACGTG

ACGCGTACGCGGCCGCTCGAG - GFP Tag - GTTTAA



[View online »](#)

Protein Sequence: >MG225401 representing NM_019500
 Red=Cloning site Green=Tags(s)

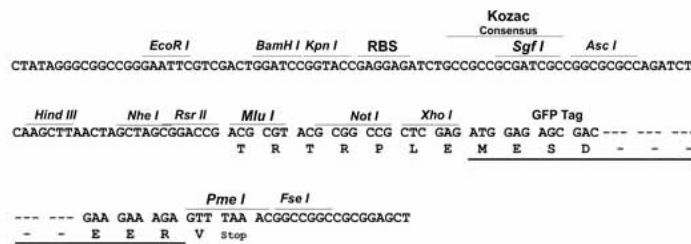
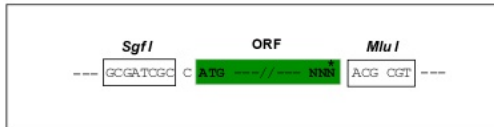
MASTAVQLLGFLLSFLGMVGLITTTILPHWRRTAHVGTNILTAVSYLKGLWMECVHSTGIYQCQIYRSL
 LALPRDLQAARALMVISCLLSGMACACAVVGMKCTRCAGKTPAKTTFAVLGGALFLLAGLLCMVAVSWTT
 NDVVQNFYNPLLPSPGMKFEIGQALYLGFISSLSLIGGTLLCLSCQDEAPYRPPYPPQSRAGATTTATAPA
 YRPPAAYKDNRAPSVTSAHSGYRLNDYV

TRTRPLE - GFP Tag - V

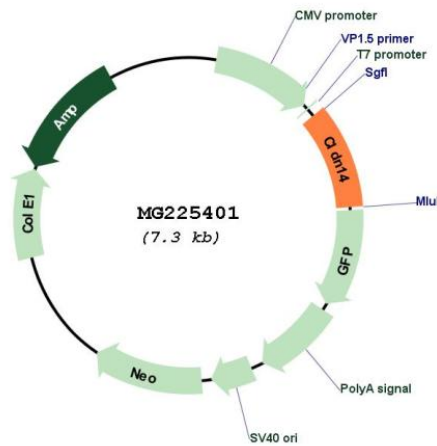
Restriction Sites: SgfI-MluI

Cloning Scheme:

Cloning sites used for ORF Shutting:



Plasmid Map:



ACCN: NM_019500

ORF Size: 717 bp

OTI Disclaimer:	The molecular sequence of this clone aligns with the gene accession number as a point of reference only. However, individual transcript sequences of the same gene can differ through naturally occurring variations (e.g. polymorphisms), each with its own valid existence. This clone is substantially in agreement with the reference, but a complete review of all prevailing variants is recommended prior to use. More info
OTI Annotation:	This clone was engineered to express the complete ORF with an expression tag. Expression varies depending on the nature of the gene.
Components:	The ORF clone is ion-exchange column purified and shipped in a 2D barcoded Matrix tube containing 10ug of transfection-ready, dried plasmid DNA (reconstitute with 100 ul of water).
Reconstitution Method:	<ol style="list-style-type: none">1. Centrifuge at 5,000xg for 5min.2. Carefully open the tube and add 100ul of sterile water to dissolve the DNA.3. Close the tube and incubate for 10 minutes at room temperature.4. Briefly vortex the tube and then do a quick spin (less than 5000xg) to concentrate the liquid at the bottom.5. Store the suspended plasmid at -20°C. The DNA is stable for at least one year from date of shipping when stored at -20°C.
RefSeq:	NM_019500.3
RefSeq Size:	1475 bp
RefSeq ORF:	720 bp
Locus ID:	56173
UniProt ID:	Q9Z0S3
Cytogenetics:	16 C4
Gene Summary:	This gene encodes a member of the claudin family of tight junction proteins. The encoded protein is an integral membrane protein that may function in maintaining apical membrane polarization in tight junctions located between outer hair cells and supporting cells. Loss of function of this gene is associated with hearing problems. Alternative splicing results in multiple transcript variants. [provided by RefSeq, Oct 2009]