

Product datasheet for **MG225398**

Trpm3 (NM_001035246) Mouse Tagged ORF Clone

Product data:

Product Type: Expression Plasmids
Product Name: Trpm3 (NM_001035246) Mouse Tagged ORF Clone
Tag: TurboGFP
Symbol: Trpm3
Synonyms: 6330504P12Rik; 9330180E14; AU018608; B930001P07Rik; LTRPC3; MLSN2
Mammalian Cell Selection: Neomycin
Vector: pCMV6-AC-GFP (PS100010)
E. coli Selection: Ampicillin (100 ug/mL)
ORF Nucleotide Sequence: >MG225398 representing NM_001035246
 Red=Cloning site Blue=ORF Green=Tags(s)

TTTTGTAATACGACTCACTATAGGGCGGCCGGAATTCGTCGACTGGATCCGGTACCGAGGAGATCTGCC
 GCC**CGATCGCC**

ATGTATGCCGAGTATCTTTTGATACGAAACCTGATCTCTTGCTACACCTGATGACCAAGGAATGGCAAC
 TGGAGCTCCCAAACCTTCTCATCTCCGTGCACGGAGGGCTGCAGAACTTTGAACTCCAGCCCAAACCTCAA
 GCAAGTCTTCGGGAAGGGGCTCATCAAAGCAGCCATGACAACCTGGAGCCTGGATCTTCACTGGAGGGGTC
 AACACAGGTGTCATTCGTCATGTTGGAGATGCCTTGAAGACCATGCATCTAAGTCTCGAGGAAGATAT
 GTACCATAGGTATCGCCCTGGGAATTGTGGAAAACAGGAAGACCTGATTGGAAGAGATGTAGTCCG
 ACCATACCAGACCATGTCCAATCCTATGAGCAAGCTCACCGTTCTCAATAGCATGCACTCCCACTTCATC
 CTGGCTGACAATGGGACCACGGGAAAATACGGAGCAGAGGTGAACTCCGACGACAACTGAAAAAGCACA
 TTTCACTCCAGAAGATAACACAAGATGCCTGCCGTTTTCTCTTTGACTCCCGCTTGTTTTATTCATT
 TTGGGGTAGTTGCCAATTAGACCAATTGGAATCGGTCAAGGGGTTCCAGTGGTGGCTCTCATCGTGGAA
 GGAGGACCAATGTGATCTCAATTGTTTTGGAATACCTTCGAGACACCCCTCCTGTACCAGTCGTGGTCT
 GTGATGGAGTGGACGGGCATCCGACATCTGGCATTGGGCATAAATATTCAGAAGAAGGCGGG

ACGCGTACGCGGCCGCTCGAG - GFP Tag - GTTTAA



[View online »](#)

Protein Sequence: >MG225398 representing NM_001035246
 Red=Cloning site Green=Tags(s)

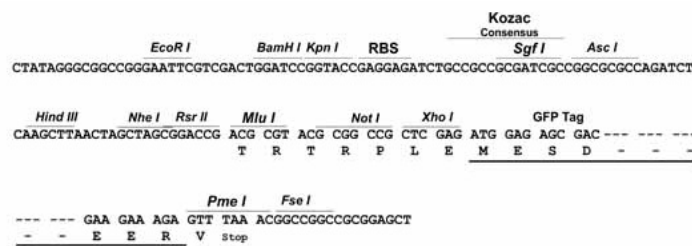
MYVRVSDTKPDLLLHLMTKEWQLELPKLLISVHGGLQNFELQPKLKQVFGKGLIKAAMTTGAWIFTGGV
 NTGVIRHVGDALKDHASKSRGKICTIGIAPWGIENQEDLIGRDVVRPYQTMSNPMSKLTVLNSMHSFI
 LADNGTTGKYGAEVKLRRLQLEKHISLQKINTRCLPFFSLDSRLFYSFWGSCQLDPIGIGQGVVVALIVE
 GGPNVISIVLEYLRDTPPVVCDGSGRASDILAFGHKYSEEGG

TRTRPLE - GFP Tag - V

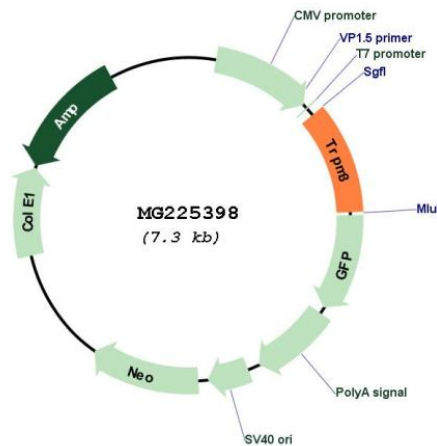
Restriction Sites: SgfI-MluI

Cloning Scheme:

Cloning sites used for ORF Shutting:



Plasmid Map:



ACCN: NM_001035246

ORF Size: 765 bp

OTI Disclaimer:	The molecular sequence of this clone aligns with the gene accession number as a point of reference only. However, individual transcript sequences of the same gene can differ through naturally occurring variations (e.g. polymorphisms), each with its own valid existence. This clone is substantially in agreement with the reference, but a complete review of all prevailing variants is recommended prior to use. More info
OTI Annotation:	This clone was engineered to express the complete ORF with an expression tag. Expression varies depending on the nature of the gene.
Components:	The ORF clone is ion-exchange column purified and shipped in a 2D barcoded Matrix tube containing 10ug of transfection-ready, dried plasmid DNA (reconstitute with 100 ul of water).
Reconstitution Method:	<ol style="list-style-type: none">1. Centrifuge at 5,000xg for 5min.2. Carefully open the tube and add 100ul of sterile water to dissolve the DNA.3. Close the tube and incubate for 10 minutes at room temperature.4. Briefly vortex the tube and then do a quick spin (less than 5000xg) to concentrate the liquid at the bottom.5. Store the suspended plasmid at -20°C. The DNA is stable for at least one year from date of shipping when stored at -20°C.
RefSeq:	NM_001035246.2
RefSeq Size:	3851 bp
RefSeq ORF:	768 bp
Locus ID:	226025
Cytogenetics:	19 B