

Product datasheet for **MG225380**

Trpm2 (NM_138301) Mouse Tagged ORF Clone

Product data:

Product Type: Expression Plasmids
Product Name: Trpm2 (NM_138301) Mouse Tagged ORF Clone
Tag: TurboGFP
Symbol: Trpm2
Synonyms: 9830168K16Rik; C79133; LTRPC2; Trp7; TRPC7; Trrp7
Mammalian Cell Selection: Neomycin
Vector: pCMV6-AC-GFP (PS100010)
E. coli Selection: Ampicillin (100 ug/mL)
ORF Nucleotide Sequence: >MG225380 representing NM_138301
Red=Cloning site Blue=ORF Green=Tags(s)

TTTTGTAATACGACTCACTATAGGGCGGCCGGAATTCGTCGACTGGATCCGGTACCGAGGAGATCTGCC
GCC**CGATCGCC**

ATGGAGTCCTTGGACCGGAGAAGAACTGGCTCTGAGCAGGAGGAGGGCTTTGGGGTGCAGTCAAGGAGGG
CCACTGACCTGGGCATGGTCCCCAATCTCCGACGAAGCAATAGCAGCCTTTGCAAGAGCAGGAGATTTCT
GTGCTCTTTCAGCAGTGAGAAGCAAGAAAACCTTAGCTCATGGATTCCCGAGAATATCAAGAAGAAGGAG
TGTGTGTACTTTCGTGAAAGTTCCAACCTCTCGGACGCAGGGAAGGTAGTGTGTGCGTGTGGTTATACCC
ACGAGCAACACTTGGAGGTGGCCATCAAGCCACACACCTTCCAGGCAAGGAGTGGGATCCAAGAACA
CGTCCAAGAGATGCCACAGATGCCTTTGGTGACATCGTTTTACAGACCTGAGCCAGAAAGTGGGGAAG
TATGTCCGGGTCTCCAGGACACGCCCTCCAGTGTCTATACCAGCTCATGACCCAGCACTGGGGCCTAG
ATGTCCCCAACCTCCTCATCTCCGTGACCGGTGGGGCCAAGAAGTCAACATGAAGCTGAGGCTGAAGAG
CATCTTCCGGAGAGGCTTGGTCAAGGTGGCTCAAACCACGGGGCCTGGATCATCACTGGAGGATCCAC
ACAGGCGTGATGAAGCAGGTGGGCGAAGCGGTACGGGACTTCAGTCTGAGCAGCAGCTGCAAGAAGGTG
AAGTCATCACTATTGGCGTAGCCACGTGGGGCACCATCCACAACCGGAGGGACTGATCCATCCCATGGG
AGGCTTCCCCCGCGAGTACATGCTGGATGAGGAAGGCCAAGGGAACCTGACCTGCTTGGACAGCAACCAT
TCCCATTATCTTGGTGGATGATGGGACCCACGGGCAATATGGTGTGGAGATTCGCTGAGGACTAAGC
TGGAAAAGTTTCTCAGAGCAAACGAAGGAAAGGGGAGGTGTGGCCATCAAGATCCCCATTGTCTGCGT
GGTGTGGAGGGTGGCCCTGGCACTCTGCATACAATCTACAATGCCATCAACAATGGCACACCCTGCGTG
ATAGTGGAGGGCTCTGGCCGAGTGGCTGACGTATCGCTCAGGTAGTACTCTGCCTGTCTCTGAGATCA
CCATCTCCTTGATCCAGCAGAAGCTCAGCATATTCTTCCAGGAGATGTTTGGAGACTTTCACCGAAAACCA
GATTGTGGAATGGACAAAAGATCCAAGACATTGTCCGGAGGCGGCAGCTGCTGACGATCTTCCGGGAA
GGCAAGGATGGTCAGCAGGATGTGGATGTGGCCATTCTGCAGGCGTTACTGAAAGCCTCTCGAAGCCAAG
ACCACTTTGGCCACGAGAACTGGGACCACCAACTGAAGTTGGCTGTGGCCTGGAACCGCGTGACATCGC
TCGCAGTGAGATCTTACCGATGAATGGCAGTGAAGCCTGCAGATCTGCATCCCATGATGACGGCCGCT



[View online »](#)

CTCATCTCCAACAAGCCTGAGTTCGTGAGGCTCTTTCTGGAGAATGGGGTGCGGCTCAAGGAGTTTGTCA
CTTGGGATACTCTTCTCTGCCTGTACGAGAACCTGGAGCCGTCTGTCTTCCACAGCAAGCTACAGAA
GGTGTGGCCGAAGAACAGCGCTTAGCCTATGCATCTGCAACACCCCGCTGCACATGCACCATGTGGCC
CAGGTGCTTCGTGAACCTCTGGGGACTCCACGCAGCTGCTGTACCCCGGCCCGGTACTGACAGGC
CACGGCTCTCGATGACCGTGCCACACATCAAGCTGAACGTGCAGGGAGTGAGCCTCCGGTCCCTCTATAA
GCGATCAACAGGCCACGTTACCTTACCATTGACCCAGTCCGTGACCTTCTATTGGGCGGTTATCCAG
AACACAGGGAGCTGGCAGGCATCATCTGGGCTCAGAGTCAGGACTGTACTGCCGAGCACTGGCCTGTA
GCAAGATCCTGAAGGAGCTGTCCAAGGAGGAGGAAGATACAGACAGCTCTGAGGAGATGCTGGCACTGGC
AGACGAGTTTGAGCACAGAGCTATAGGCGTCTTACTGAGTGCTACAGGAAGGATGAGGAAAGAGCCAG
AAGCTGCTTGCCGTGTGTCTGAGGCTGGGGGAAGACCCTGCCTGCAGCTGGCCCTAGAGGCCAAGG
ACATGAAATTCGTGTCTCATGGAGGCATCCAGGCTTTCCTAACCAAGGTGTGGTGGGGCCAGCTCTGTGT
GGACAATGGCCTGTGGAGGATCATCTGTGCATGCTGGCCTTCCCGTGTCTTACCAGGCTTCTATCTCC
TTCAGGAAAAGAGGCTGCAGGCACTGTGTCGCCAGCCCGCTCCGCGCTTCTCAATGCGCCTGTGG
TCATCTTCCACATGAATATCCTCTCTACTTTGCCTTCTCTGCCTGTTGCGCTACGTGCTCATGGTGA
CTTCCAGCCTTCTCCATCCTGGTGGAGTACCTCATCTACCTGTGGCTTCTCTCCCTGGTGTGCGAAGAG
ACTCGGCAGTATTCTATGATCCTGATGGCTGTGGACTAATGAAGATGGCGTCCCTGTACTTCAAGTACT
TCTGGAACAAACTGGACGTTGGGGCCATTCTGCTCTTATAGTAGGACTGACCTGTGCGGCTCATCCAGC
GACGCTGTACCCTGGGCGCATCATCTGTCTTTGGACTTATCATGTTCTGTCTCCGTCTCATGCACATC
TTCATATTAGCAAGACTGGGGCCCAAGATAATCATCGTGAAGCGGATGATGAAGGACGTCTTCTTCT
TCCTCTTCTCCTGGCGGTGTGGGTGGTGTCTTCGGCGTAGCTAAGCAGGCCATTCTCATAATAACGA
GAGCCCGTGGACTGGATCTTCCGTGGGGTTGTCTACTCTTACCTGACCATCTTGGCCAGATCCCA
ACCTACATTGACGGTGTGAATTTACGATGGACCAGTGCAGCCCAATGGCAGGACCCCTACAAGCCTA
AGTGTCTGAGAGCGACTGGACGGGACAGGCACCTGCCTTCCCGAGTGGCTGACTGTCAACCTGTCTG
CCTCTACCTGCTCTTGGCAACATCCTGCTGCTTAACTGCTCATCGCCATGTTCAACTACACCTTCCAG
GAGGTGCAGGAACACACAGACCAGATCTGGAATTTCCAGCGCCACGACCTGATCGAGGAGTACCATGGCC
GTCCCCGGCACCTCCCCACTCATCTCTCAGCCACCTGCAGCTCCTGATCAAGAGGATTGTCTGAA
GATCCCTGCCAAGAGGCATAAGCAGCTCAAGAACAAGCTGGAGAAGAACGAGGAGACAGCGCTCCTGTCT
TGGGAAGTGTACCTGAAGGAGAACTACCTGCAGAACAGCAGTACCAGCAGAAACAGCGTCCAGAGCAGA
AAATCAAAGACATCAGTGAGAAAGTGGACACCATGGTGGATCTGCTGGACATGGACCAGGTGAAGAGGTC
AGGCTCCACAGAGCAGAGACTGGCTTCCCTGGAGGAACAGGTGACTCAGGTGACCAGAGCTTTGCACTGG
ATCGTGACAACCTGAAGGACAGTGGCTTTGGCTCAGGAGCAGGTGCGCTGACCTGGCACCCAGAGGG
CCTTCGATGAGCCAGATGCTGAGCTGAGTATCAGGAGGAAAGTAGAGGAACCAGGAGATGGTTACCACGT
GAGCGCCCGCATCTCCTCTATCCAATGCCCGCATATGCGCTTCCCGTGCCTAACGAGAAGGTGCT
TGGGCGGCAGAGTTTCTGATCTACGATCCTCCCTTTACACCGCTGAGAAGGATGTGGCTCTCACAGACC
CCGTGGGAGACTGCAGAACCTCTGTCTAAGATCAGTTACAACGTGCTGGATGGACCGACGGACCGTGC
CAGCTTCCATGGAGTCTACGTGGTCGAGTATGGTTCCCGTTGAACCCATGGGCCGCACAGGGTTGCGT
GGTCGTGGGAGCCTCAGCTGGTTTGGTCCCAACACACTCTGCAGCCAGTTGTCAACCGGTGAAGAGGA
ACCAGGGTGGAGCCATCTGCCGAAGAGTGTGAGGAAGATGCTGGAGGTGCTAGTGATGAAGCTGCCTCG
CTCTGAGCACTGGGCCTTGCCTGGGGCTTAGGGAGCCAGGGGAGATGCTACCACGGAAGCTGAAACGG
GTCCTCCGGCAGGAGTTCTGGGTGGCCTTTGAGACCTTGCTGATGCAAGGTACAGAGGTATACAAAGGGT
ACGTGGATGACCAAGGAACACAGACAATGCCTGGATCGAGACAGTGGCTGTGAGCATCCATTTTACGGA
CCAGAATGATATGGAGCTGAAGAGGCTGGAAGAGAACCTGCACACTCATGATCCAAAGGAGTTGACCCGT
GACCTGAAGCTGTCTACTGAATGGCAGGTGGTAGACCGCGGATCCCTCTGTATGCGAACCAAGACCA
TCCTCCAGAAAGGTGGCCTACTGTTTGGAGCTCACTTC

ACGCGTACGCGGCCGCTCGAG – GFP Tag – GTTTAA

Protein Sequence: >MG225380 representing NM_138301
 Red=Cloning site Green=Tags(s)

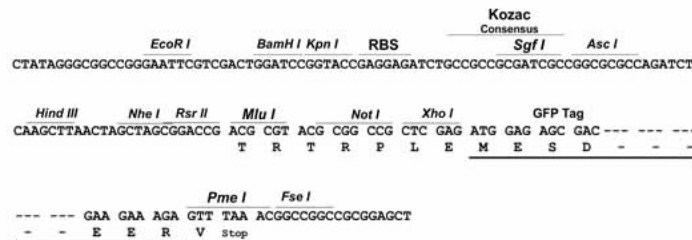
MESLDRRTGSEQEFGVQSRATDLGMVPLRRSNSSLCKSRFLCSFSSEKQENLSSWIPENIKKKE
 CVYFVSSKLS DAGKVVACAGYTHEQHLVAIKPHTFQKQKEDPKKHVQEMPTDAFGDIVFDLSQKVGK
 YVRVSDQTPSSVIYQLMTQHWGLDVPNLLISVTGGAKNFNMKLRKLSIFRRGLVKVAQTTGAWIITGGSH
 TGVMKQVGEAVRDFSLSSCKEVEVITIGVATWGTIHNREGLIHPMGGFPAEYMLDEEGQNL TCLDSNH
 SHFILVDDGTHGQYVEIPLRRTKLEKFI SEQTKERGGVAIKIPIVCVVLEGGPGTLHTIYNAINNGTPCV
 IVEGSGRVADVIAQVATLPVSEITISLIQKLSIFFQEMFETFTENQIVIEWTKKIQDIVRRRQLLTFRE
 GKDGQQVDVAILQALLKASRSQDHFHGENWDHQLKLAVAWNRVDIARSEIFTDEWQWKPADLHPMATA
 LISNKPEFVRLFLENGVRLKEFVTWDTLLCLYENLEPSCLFHSLKQKVL AEEQRLAYASATPRLMHMVA
 QVLRLLGDSTQLLYPRPRYTDRPRLSMTVPHIKLNVQGVSLRSLYKRSTGHVTFIDPVRDLLIWAIVQ
 NHRELAGIIWAQSDCTAAALACSKILKEL SKEEEDTDSSEMLALADEFEHRAIGVFTECYRKDEERAQ
 KLLVRVSEAWGTTCLQALALEAKDMKFVSHGGIQAF LTKVWWGQLCVDNGLWRIILCMLAFPLLTGFIS
 FREKRLQALCRPARVRAFFNAPVVI FHMNILSYFAFLCLFAYVLMVDFQSPSPWCEYLIYLWFLSLVCEE
 TRQLFYDPDGCLMKMASLYFSDFWNKLDVGAILL FIVGLTCRLIPATLYPGR IILSLDFIMFCLRLMHI
 FTISKTLGPKIIIVKRMKDVFFFLFLLAVVVV SFGVAKQAILIHNESRVDWIFRGGVYHSLYITFGQIP
 TYIDGVNFSMDQCSNPGTDPYKPKCPESDWTGQAPAFPEWLTVTLLCLYLLFANILLLNLLIAMFNFTFQ
 EVQEHTDQIWKFRQHDLEIEYHGRPPAPPPL ILLSHLQLLIKRIVLKIPAKRHKQLKNKLEKNEETALLS
 WELYLKENYLQNQQYQKQRPEQIQDI SEKVDTMVDLDDMDQVKRSGSTEQR LASLEEQVTQVTRALHW
 IVTTLKDSGFGSAGAL TLAQRAFDEPDAEL SIRRKVEEPGDGYHVSARHLL YPNARIMRFPVNEKVP
 WAAEFLIYDPPFYAEKDVAL TDPVGD TAEPLSKI SYNVDVDPDRRSFHGVYVVEYGFPLNPMGR TGLR
 GRGSLSWFGPNHTLQPVVTRWKRNOGGAICRKS VRKMLEVL VMKLP RSEHWALPGSREPGEMLPRKLR
 VLRQEFVVAFETLLMQGTEVYKGYVDDPRNTD NAWIETVAVSIHFQDQNDMELKRL EENLHTHDPKELTR
 DLKLS TEWQVVDRIPL YANHKILQKVASLFGA HF

TRTRPLE - GFP Tag - V

Restriction Sites: SgfI-MluI

Cloning Scheme:

Cloning sites used for ORF Shutting:



ACCN: NM_138301

ORF Size: 4518 bp

OTI Disclaimer: Due to the inherent nature of this plasmid, standard methods to replicate additional amounts of DNA in E. coli are highly likely to result in mutations and/or rearrangements. Therefore, OriGene does not guarantee the capability to replicate this plasmid DNA. Additional amounts of DNA can be purchased from OriGene with batch-specific, full-sequence verification at a reduced cost. Please contact our customer care team at custsupport@origene.com or by calling 301.340.3188 option 3 for pricing and delivery.

The molecular sequence of this clone aligns with the gene accession number as a point of reference only. However, individual transcript sequences of the same gene can differ through naturally occurring variations (e.g. polymorphisms), each with its own valid existence. This clone is substantially in agreement with the reference, but a complete review of all prevailing variants is recommended prior to use. [More info](#)

OTI Annotation: This clone was engineered to express the complete ORF with an expression tag. Expression varies depending on the nature of the gene.

Components: The ORF clone is ion-exchange column purified and shipped in a 2D barcoded Matrix tube containing 10ug of transfection-ready, dried plasmid DNA (reconstitute with 100 ul of water).

Reconstitution Method:

1. Centrifuge at 5,000xg for 5min.
2. Carefully open the tube and add 100ul of sterile water to dissolve the DNA.
3. Close the tube and incubate for 10 minutes at room temperature.
4. Briefly vortex the tube and then do a quick spin (less than 5000xg) to concentrate the liquid at the bottom.
5. Store the suspended plasmid at -20°C. The DNA is stable for at least one year from date of shipping when stored at -20°C.

RefSeq: [NM_138301.2](#), [NP_612174.2](#)

RefSeq Size: 7292 bp

RefSeq ORF: 4521 bp

Locus ID: 28240

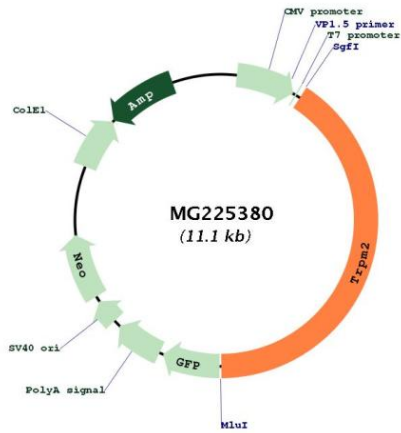
UniProt ID: [Q91YD4](#)

Cytogenetics: 10 39.72 cM

Gene Summary:

Nonselective, voltage-independent cation channel that mediates Na⁽⁺⁾ and Ca⁽²⁺⁾ influx, leading to increased cytoplasmic Ca⁽²⁺⁾ levels (PubMed:11804595, PubMed:19454650, PubMed:21753080, PubMed:22493272). Functions as ligand-gated ion channel. Binding of ADP-ribose to the cytoplasmic Nudix domain causes a conformation change; the channel is primed but still requires Ca⁽²⁺⁾ binding to trigger channel opening. Extracellular calcium passes through the channel and increases channel activity (By similarity). Also contributes to Ca⁽²⁺⁾ release from intracellular stores in response to ADP-ribose (PubMed:21753080). Plays a role in numerous processes that involve signaling via intracellular Ca⁽²⁺⁾ levels (PubMed:21753080). Besides, mediates the release of lysosomal Zn⁽²⁺⁾ stores in response to reactive oxygen species, leading to increased cytosolic Zn⁽²⁺⁾ levels (By similarity). Activated by moderate heat (35 to 40 degrees Celsius) (PubMed:27533035, PubMed:27562954). Activated by intracellular ADP-ribose, beta-NAD (NAD⁽⁺⁾) and similar compounds, and by oxidative stress caused by reactive oxygen or nitrogen species (PubMed:19454650, PubMed:21753080, PubMed:22493272). The precise physiological activators are under debate; the true, physiological activators may be ADP-ribose and ADP-ribose-2'-phosphate. Activation by ADP-ribose and beta-NAD is strongly increased by moderate heat (35 to 40 degrees Celsius) (By similarity). Likewise, reactive oxygen species lower the threshold for activation by moderate heat (37 degrees Celsius) (PubMed:22493272, PubMed:25817999). Plays a role in mediating behavioral and physiological responses to moderate heat and thereby contributes to body temperature homeostasis (PubMed:27533035, PubMed:27562954). Plays a role in insulin secretion, a process that requires increased cytoplasmic Ca⁽²⁺⁾ levels (PubMed:20921208, PubMed:25817999). Required for normal IFNG and cytokine secretion and normal innate immune immunity in response to bacterial infection (PubMed:21709234). Required for normal phagocytosis and cytokine release by macrophages exposed to zymosan (in vitro) (PubMed:22493272). Plays a role in dendritic cell differentiation and maturation, and in dendritic cell chemotaxis via its role in regulating cytoplasmic Ca⁽²⁺⁾ levels (PubMed:21753080). Plays a role in the regulation of the reorganization of the actin cytoskeleton and filopodia formation in response to reactive oxygen species via its function in increasing cytoplasmic Ca⁽²⁺⁾ and Zn⁽²⁺⁾ levels (By similarity). Confers susceptibility to cell death following oxidative stress (PubMed:25562606). [UniProtKB/Swiss-Prot Function]

Product images:



Circular map for MG225380