

Product datasheet for **MG225379**

Trpv3 (NM_145099) Mouse Tagged ORF Clone

Product data:

Product Type:	Expression Plasmids
Product Name:	Trpv3 (NM_145099) Mouse Tagged ORF Clone
Tag:	TurboGFP
Symbol:	Trpv3
Synonyms:	1110036I10Rik; AI644701; Nh; VRL3
Mammalian Cell Selection:	Neomycin
Vector:	pCMV6-AC-GFP (PS100010)
E. coli Selection:	Ampicillin (100 ug/mL)



[View online »](#)

ORF Nucleotide
Sequence:

>MG225379 representing NM_145099
Red=Cloning site Blue=ORF Green=Tags(s)

TTTTGTAATACGACTCACTATAGGGCGGCCGGAATTCGTCGACTGGATCCGGTACCGAGGAGATCTGCC
GCC**CGCATCGCC**

ATGAATGCCCACTCCAAGGAGATGGTGCCCTCATGGCAAAGAACCACAGCACCTGGCGGGAACCTG
TTGTAAGTACGAGGAGAGAGGCCAGCAGATCTACCCCAACAAGAAGAGTGCACACTTCTCCTGGAGAT
AGAAGGATTTAGCCCAACCCACGGTCAACAAGACCTCTCCACCCATCTTCTCCAAGCCGATGGACTCC
AACATCCGGCAGTGCCTCTCTGGCAACTGTGATGACATGGACTCTCCCAAGTCTCCTCAGGATGATGTGA
CAGAGACCCCAATCCAATCCAACAGTCCGAGCGCAAACCTGGCCAAGGAAGAACAGAGGCAGAAGAAGAA
GCGACTGAAGAAGCGCATTTTACGGCTGTGTCTGAGGGATGCGTGGAGGAGCTGCGGGAACCTCTACAG
GATCTGCAGGACCTCTGCAGGAGCGCCGCGCCTGGATGTGCCTGACTTCTCATGCACAAGCTGACAG
CCTCAGACACTGGGAAGACCTGCCTGATGAAGGCTTTGCTCAACATCAATCCAACACCAAGAGATCGT
GCGGATTCGCTTGCCTTCGCTGAGGAGAACGACATCCTGGACAGTTTCAACGCTGAGTACACGGAA
GAGGCCTATGAAGGGCAGACAGCGCTGAACATCGCCATCGAGCGCGCCAGGGAGACATCACAGCAGTGC
TTATAGCAGCGGGTGTGACGTCAATGCTCACGCCAAGGGGGTCTTCTTCAACCCCAAATACCAGCATGA
AGGCTTCTATTTTGGCGAGACCCCTGGCTTTGGCAGCGTGTACCAACCAGCCTGAGATTGTGCAGCTG
CTGATGGAGAATGAGCAGACAGACATCGCTTCCAGGATTCGCGGGAAACAACATCCTGCACGCGCTGG
TGACGGTGGCTGAGGACTTCAAGACTCAGAATGACTTCGTTAAGCGCATGTATGACATGATCCTGCTGAG
GAGTGGCAACTGGGAGCTGGAGACCATGCGCAACAACGATGGGCTCACGCCACTGCAGCTGGCTGCCAAG
ATGGGCAAGGCTGAGATCCTGAAGTACATCCTCAGCCGAGATCAAGGAGAAGCCTCTCCGGAGCTTGT
CCAGGAAGTTCAGGACTGGGCGTATGGCCTGTGTCTCATCCTCACTCTATGACCTCACCAATGTAGACAC
AACGACGGATAACTCTGTGCTGAAATCATCGTCTACAACCAACATTGATAACCGACATGAGATGCTG
ACCCTGGAGCCTCTGCATACGCTGTACACACGAAATGGAAGAAATTTGCCAAGTACATGTTCTTCTTGT
CCTTCTGCTTCTATTTCTTCTACAACATCACCCCTGACCCTTGTCTTACTACCCTCCTCGGGAAGATGA
GGATCTCCACACCCCTTGGCCCTGACACACAAAATGAGTTGGCTTACGCTCCTAGGGAGGATGTTTGTG
CTCATCTGGCCACATGCATCTCTGTGAAAGAAGGCATTGCCATTTTCTGCTGAGACCCTCCGATCTT
AGTCCATCCTGTCAGATGCCTGGTTTCACTTTGTCTTTTTTGTCCAAGCTGTACTTGTGATACTGTCTGT
ATTCTTGTACTTGTGGCTACAAGAATACCTCGCTGCCTCGTGTGGCCATGGCCCTGGGCTGGGCG
AACATGCTCTACTACACGAGAGGCTTCCAGTCTATGGGCATGTACAGCGTCATGATCCAGAAGGTCATTT
TGCATGATGTCCTCAAGTCTTGTGTTTACATCCTGTTCTTACTTGGATTTGGAGTAGCGCTGGCCTC
ACTGATTGAGAAGTGTCCAAGGACAAAAGGACTGCAGTTCTATGGCAGCTTCAGCGACGCGGTGCTG
GAGCTCTTCAAGCTCACCATAGGCTGGGCGACCTGAACATCCAGCAGAACTCCACCTACCCCATCTCT
TTCTCTTCTACTCATACCTATGTCACTCACCTTCGCTCCTCCTCAACATGCTCATTGCCCTGAT
GGGGGAGACGGTGGAGAAGCTCTCAAAGAAAGTGAAGCGGATCTGGCGCTTGCAGAGAGCCAGGACCATC
TTGGAGTTTGAGAAAATGTTACCAGAATGGCTGAGAAGCAGATTCCGCATGGGCGAGCTGTGCAAAGTAG
CAGATGAGGACTTCCGGCTGTGTCTGCGGATCAACGAGGTGAAGTGGACGGAATGGAAAACACACGTGTC
CTTCCTTAATGAAGACCCGGGACCCATAAGACGGACAGATTTAAACAAGATTCAAGATTCTTCAGGAGC
AATAGCAAAACCCCTCTATGCGTTTGTGATGAATTAGATGAATTCCAGAAACGTCGGTG

ACGCGTACGCGGCCGCTCGAG - GFP Tag - GTTTAA

Protein Sequence: >MG225379 representing NM_145099
 Red=Cloning site Green=Tags(s)

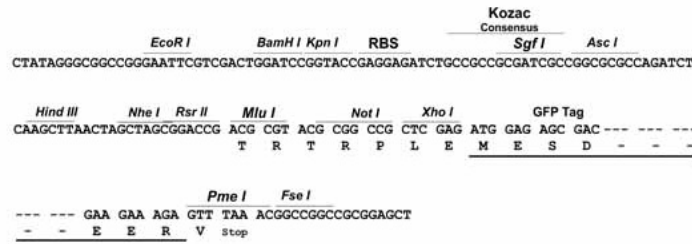
MNAHSKEMVPLMGKRTTAPGGNPVVLTEKRPADLTPTKSAHFFLEIEGFEPNPTVTKTSPPIFSKPMDS
 NIRQCLSGNCCDDMSPQSPQDDVTETPSNPNSANLAKEEQRQKKRLLKRIFTAVSEGCVEELRELLQ
 DLQDLCRRRRGLDVPDFLMHKL TASDTGKTCLMKALLNINPNTKEIVRILLAF AEENDILDRFINAEYTE
 EAYEGQTALNIAIERRQGDITAVLIAAGADVNAHAKGVFFNPKYQHEGFYFGETPLALAACTNQPEIVQL
 LMENEQTDIASQDSRGNILHALVTVAEDFKTQND FVKRMYDMILLRSGNWELETMRNNDGLTPLQLAAK
 MGKAEILKYILSREIKEKPLRSLSRKFTDWAYGPVSSSLYDLTNVDTTDNSVLEIIVYNTNIDNRHEML
 TLEPLHTLLHTKWKFKAYMFFLSFCFYFFYNITLTVSYYRPREDEDLPHPLALTHKMSWLQLLGRMFV
 LIWATCISVKEGIAIFLLRPSDLQSILSDAWFHVFFVQAVLVILSVFLYL FAYKEYLACLVLAMALGWA
 NMLYYTRGFQSMGMYSVMIQKVILHDVLKFLFVYILFLLGFGVALASLIEKCSKDKKDCSSYGSFSDAVL
 ELFKLTIGLGDNLIQNSTYPIFLFLLITYVILTFVLLL NMLIALMGETVENVSKESERIWR LQRARTI
 LEFEKMLPEWLSRFRMGELCKVADEDFRLCLRINEVKWTEWKTHVSFLNEDPGPIRRTDLNKIQDSSRS
 NSKTTLYAFDELDEFPETSV

TRTRPLE - GFP Tag - V

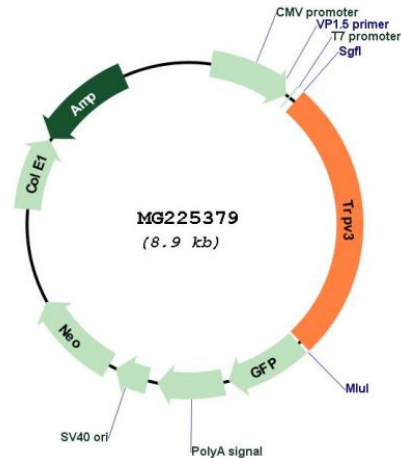
Restriction Sites: SgfI-MluI

Cloning Scheme:

Cloning sites used for ORF Shuttling:



Plasmid Map:



ACCN: NM_145099

ORF Size: 2373 bp

OTI Disclaimer: Due to the inherent nature of this plasmid, standard methods to replicate additional amounts of DNA in *E. coli* are highly likely to result in mutations and/or rearrangements. Therefore, OriGene does not guarantee the capability to replicate this plasmid DNA. Additional amounts of DNA can be purchased from OriGene with batch-specific, full-sequence verification at a reduced cost. Please contact our customer care team at custsupport@origene.com or by calling 301.340.3188 option 3 for pricing and delivery.

The molecular sequence of this clone aligns with the gene accession number as a point of reference only. However, individual transcript sequences of the same gene can differ through naturally occurring variations (e.g. polymorphisms), each with its own valid existence. This clone is substantially in agreement with the reference, but a complete review of all prevailing variants is recommended prior to use. [More info](#)

OTI Annotation: This clone was engineered to express the complete ORF with an expression tag. Expression varies depending on the nature of the gene.

Components: The ORF clone is ion-exchange column purified and shipped in a 2D barcoded Matrix tube containing 10ug of transfection-ready, dried plasmid DNA (reconstitute with 100 ul of water).

Reconstitution Method:

1. Centrifuge at 5,000xg for 5min.
2. Carefully open the tube and add 100ul of sterile water to dissolve the DNA.
3. Close the tube and incubate for 10 minutes at room temperature.
4. Briefly vortex the tube and then do a quick spin (less than 5000xg) to concentrate the liquid at the bottom.
5. Store the suspended plasmid at -20°C. The DNA is stable for at least one year from date of shipping when stored at -20°C.

RefSeq: [NM_145099.2](#), [NP_659567.2](#)

RefSeq Size: 2440 bp

RefSeq ORF: 2376 bp

Locus ID: 246788

UniProt ID: [Q8K424](#)

Cytogenetics: 11 45.25 cM

Gene Summary: Putative receptor-activated non-selective calcium permeant cation channel. It is activated by innocuous (warm) temperatures and shows an increased response at noxious temperatures greater than 39 degrees Celsius. Activation exhibits an outward rectification. May associate with TRPV1 and may modulate its activity. Is a negative regulator of hair growth and cycling: TRPV3-coupled signaling suppresses keratinocyte proliferation in hair follicles and induces apoptosis and premature hair follicle regression (catagen) (By similarity).[UniProtKB/Swiss-Prot Function]