

Product datasheet for **MG225370**

Adora1 (NM_001008533) Mouse Tagged ORF Clone

Product data:

Product Type: Expression Plasmids
Product Name: Adora1 (NM_001008533) Mouse Tagged ORF Clone
Tag: TurboGFP
Symbol: Adora1
Synonyms: A1-AR; A1AR; A1R; AA1R; AI848715; BB176431; Ri
Mammalian Cell Selection: Neomycin
Vector: pCMV6-AC-GFP (PS100010)
E. coli Selection: Ampicillin (100 ug/mL)
ORF Nucleotide Sequence: >MG225370 representing NM_001008533
Red=Cloning site Blue=ORF Green=Tags(s)

TTTTGTAATACGACTCACTATAGGGCGGCCGGAATTCGTCGACTGGATCCGGTACCGAGGAGATCTGCC
GCC**CGATCGCC**

ATGCCCGGTACATCTCGGCCTCCAGGCTGCCTACATTGGCATCGAGGTGCTCATTGCCTTGGTCTCTG
TGCCCGAAATGACTGGTGATTTGGGCTGTGAAGGTGAACCAGGCACTTCGCGATGCTACCTTCTGCTT
CATCGTATCCCTGGCGGTAGCTGATGTGGCTGTTGGCGCCCTGGTCATCCCACTGGCCATCCTTATCAAC
ATTGGGCCACAGACCTACTTCCACACCTGCCTCATGGTGGCCTGTCTGCCTCATCTCACCCAGAGCT
CCATCCTGGCTCTGCTTGTATTGCTGTGGATCGGTACCTCCGAGTCAAGATCCCTCTCCGGTACAAGAC
AGTGGTGAAGTCAAGTGTGAGTTCGAGAAGGTTATCAGCATGGAGTACATGGTCTACTTCAACTTCTCGT
ACACCCATGTTTGGCTGGAACAACCTGAGTGAGGTGGAACAAGCCTGGATAGCCAACGGCAGTGTGGGG
AGCCCGTGATCAAGTGTGAGTTCGAGAAGGTTATCAGCATGGAGTACATGGTCTACTTCAACTTCTCGT
CTGGGTGCTGCCGCAATTGCTCCTCATGGTCTTATCTACCTGGAGGTCTTCTACCTGATCCGCAAGCAG
CTCAACAAAAAGGTGTCAGCCTCCTCTGGTGACCCCAAGTACTACGGGAAGGAGCTCAAGATCGCCA
AGTCGCTGGCCCTCATCTCTTCTCTTGGCCCTCAGCTGGTACCGCTACACATCTTGAAGTGCATCAC
CCTCTTCTGCCCCACCTGCCAGAAACCCAGCATCTCATCTACATTGCCATCTTCTCACACACGGCAAC
TCGGCCATGAACCCCATCGTCTATGCCTTCCGAATCCACAAGTCCGGGTACCTTTCTGAAGATTTGGA
ACGACCACTTCCGATGCCAGCCCAAGCCCCCATTGAGGAAGATATCCAGAGGAAAGCTGATGAC

ACGCGTACGCGGCCGCTCGAG - GFP Tag - GTTTAA



[View online »](#)

Protein Sequence: >MG225370 representing NM_001008533
 Red=Cloning site Green=Tags(s)

MPPYISAFQAAYIGIEVLIALVSVPGNVLVIWAVKVNQALRDATFCFIVSLAVADVAVGALVIPLAILIN
 IGPQTYFHTCLMVACPVLILTQSSILALLAIAVDRLRVKIPLRYKTVVTRRAAVAIAGCWILSLVVGL
 TPMFGWNNLSEVEQAWIANGSVGEPVIKCEFKEKVISMEYMYVFNFFVWVLPPLLLMVLIIYLEVFYLIRKQ
 LNKKVSASSGDPQKYYGKELKIAKSLALILFLFALSWLPLHILNCITLFCPTCQKPSILIIYIAIFLTHGN
 SAMNPIVYAFRIHKFRVTLFKIWNDFRCQPKPIEEDIPEEKADD

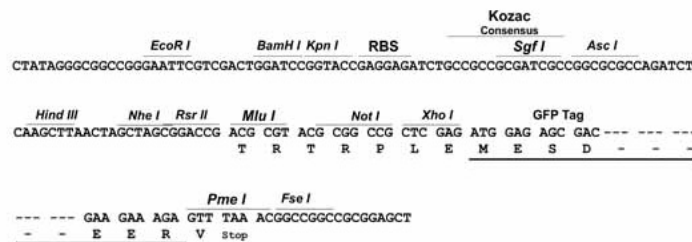
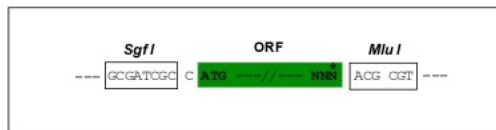
TRTRPLE - GFP Tag - V

Chromatograms: https://cdn.origene.com/chromatograms/ja1385_e05.zip

Restriction Sites: SgfI-MluI

Cloning Scheme:

Cloning sites used for ORF Shuttling:



ACCN: NM_001008533

ORF Size: 978 bp

OTI Disclaimer: The molecular sequence of this clone aligns with the gene accession number as a point of reference only. However, individual transcript sequences of the same gene can differ through naturally occurring variations (e.g. polymorphisms), each with its own valid existence. This clone is substantially in agreement with the reference, but a complete review of all prevailing variants is recommended prior to use. [More info](#)

OTI Annotation: This clone was engineered to express the complete ORF with an expression tag. Expression varies depending on the nature of the gene.

Components: The ORF clone is ion-exchange column purified and shipped in a 2D barcoded Matrix tube containing 10ug of transfection-ready, dried plasmid DNA (reconstitute with 100 ul of water).

Reconstitution Method:

1. Centrifuge at 5,000xg for 5min.
2. Carefully open the tube and add 100ul of sterile water to dissolve the DNA.
3. Close the tube and incubate for 10 minutes at room temperature.
4. Briefly vortex the tube and then do a quick spin (less than 5000xg) to concentrate the liquid at the bottom.
5. Store the suspended plasmid at -20°C. The DNA is stable for at least one year from date of shipping when stored at -20°C.

RefSeq: [NM_001008533.3](#), [NP_001008533.1](#)

RefSeq ORF: 981 bp

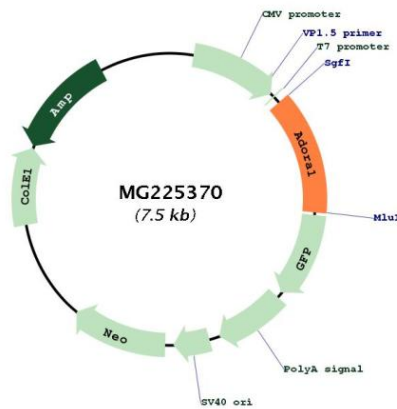
Locus ID: 11539

UniProt ID: [Q60612](#)

Cytogenetics: 1 E4

Gene Summary: Receptor for adenosine. The activity of this receptor is mediated by G proteins which inhibit adenylyl cyclase.[UniProtKB/Swiss-Prot Function]

Product images:



Circular map for MG225370