

Product datasheet for **MG225369**

Pdcd6ip (NM_001164678) Mouse Tagged ORF Clone

Product data:

Product Type:	Expression Plasmids
Product Name:	Pdcd6ip (NM_001164678) Mouse Tagged ORF Clone
Tag:	TurboGFP
Symbol:	Pdcd6ip
Synonyms:	AI480591; Aip1; Alix; AW544830; C76364; Eig2; mKIAA1375
Mammalian Cell Selection:	Neomycin
Vector:	pCMV6-AC-GFP (PS100010)
E. coli Selection:	Ampicillin (100 ug/mL)



[View online »](#)

ORF Nucleotide Sequence:

>MG225369 representing NM_001164678
 Red=Cloning site Blue=ORF Green=Tags(s)

TTTTGTAATACGACTCACTATAGGGCGGCCGGAATTCGTCGACTGGATCCGGTACCGAGGAGATCTGCC
 GCC**CGCATCGCC**

ATGGCGTCGTTTCATCTGGGTGCAGCTGAAGAAGACCTCGGAGGTGGACCTGGCCAAGCCGCTGGTGAAGT
 TCATCCAGCAGACGTACCCGAGCGGCGGAGGAGCAGGCCAGTACTGCCGTGCGGCCGAGGAGCTCAG
 CAAACTGCGGCGCTCGGCGCTCGGTCGCCCGCTGGACAAGCATGAGGGCGCCCTGGAGACGTTGCTGAGG
 TATTATGATCAGATTTGTTCCATTGAACCCAAGTCCCATTTTCTGAAAAACAGATCTGCTTGACGTTCA
 CGTGGAAGGATGCTTTTGATAAAGGTTCCCTTTTTGGAGGGTCTGTAATAATTGGCTTTGCAAGCTTAGG
 ATATGAAAAGAGCTGTGTGTTCAATTGTGCTGCCTTAGCTAGCCAGATTGCAGCAGAGCAGAACCCTG
 GATAATGATGAAGGATTGAAAACCGCTGCTAAGCAGTACCAGTTTGTAGTGGTGCCTTTTTACATATTA
 AAGACACAGTGTATCTGCCTTAAGTCGAGAGCCTACTGTGGACATATCTCCAGATACTGTTGGAACCTC
 CAGTCTTATTATGCTGGCTCAAGCTCAAGAAGTATTTTTCTTAAAAGCCACAAGAGATAAGATGAAAGAT
 GCCATCATAGCTAAGCTGGCAAATCAGGCTGCGGATTACTTTGGCGATGCTTTCAAGCAGTGTCACTACA
 AGGACACGCTCCCAAGGAGGATTCCCCACCCTGGCTGCAAAGCAGTGCATCATGCAGGCCAATGCTGA
 GTACCACAGTCCATCCTGGCCAAGCAGCAGAAGAAGTTTGGGAAGAGATCGCAAGGTTGCAGCACGCA
 GCAGAACTGATCAAGAATGTGGCCTCTCGCTATGATGAGTATGTCAATGTGAAGGATTTTTCTGACAAAA
 TCAACCGTGCCCTTACTGCAGCAAAGAAGGATAATGATTTTATTTATCATGACCGTGTCCCGACCTTAA
 GGATCTGGATCCTATCGGCAAAGCCACACTTGTGAAGCCACCCAGTCAATGTACCTGTCAGCCAGAAG
 TTCACGGATTTGTTGAGAAGATGGTCCCTGTCTGTGCAGCAGTCCCTGGCTGTGTTTAGTCAGAGGA
 AAGCTGACTTGGTCAACAGATCAATCGCTCAGATGAGAGAAGCTACGACTTTGGCAAATGGAGTATTGGC
 TTCCCTTAACTTCCAGCAGCAATTGAAGATGTGTCTGGAGACACTGTACCTCAGTCTATACTTACCAAG
 TCTACATCTGTAGTTGAACAGGGAGGCATCCAGACTGTCGACCAGCTGATAAAGAGCTACCTGAGCTGC
 TGCAAAGAAATAGAGAAATATTAGAGGAGTCGCTAAGATTGTTGGATGAAGAAGAAGCAACTGACAAATGA
 TTTAAGAGCAAAATCAAGGACCGCTGGCAAAGGACTCCATCCAATGACCTGTACAAGCCTTTACGAGCA
 GAGGGAGCCAAATTCAGAGCCGTTTTAGATAAAGCTGTGCAAGCGGATGGACAGGTGAAGGAGCGCTACC
 AGTCCCATCGAGACACCATCGCACTTCTGTGTAAGCCGGAGCCAGAGCTGAATGCTGCCATCCCCTCTGC
 TAACCCAGCAAAGACCATGCAGGCAGCGAGGTTGTAAGTGTCTTAAAGTCTTATTATCAAATCTTGAT
 GAAATCAAGAAGGAAAGAGAGAGTCTTGAGAATGACCTGAAGTCAAGTGAATTTTGACATGACAAGCAAGT
 TTTTGACAGCTCTGGCCCAAGATGGCGTGATAAATGAGGAGGCTCTCTGTCACTGAGCTGGATCGGAT
 CTATGGCGGTCTAACAAGTAAAGTTCAAGAGTCTCTGAAGAAAACAAGAGGGACTTCTAAAAAATATACAG
 GTCTCACACCAAGAATTCTCAAAATGAAGCAATCTAACAACGAGGCTAAGTGGAGAGAAGAAGTCTGA
 AGAACCTAGCAACTGCGTATGACAACCTTGTGAGCTTGTAGCTAAGTGAAGGAGGGCACAAGTTTTTA
 CAATGAGCTGACTGAGATCCTGGTCAGGTTCCAGAACAATGCAGTGACATAGTGTGTCACGGAAGACA
 GAAAGAGACGAGCTTTGAAGGATCTGCAGCAGAGCATTGCCAGAGAGCCAGCGCTCCTCAATCCCTC
 CTCCAGCCTATCAGTCTCCAGCAGCGGGCATGCAGCAGCGCTCCAACCTCCAGCCCAAGAACCAT
 GCCGGTGAGTACGCCTGCTAAGCCCAAGCCTCCAGCCCGGCTCCACCTCCTGTGCTTCTGCAAACCGA
 GTTCTCCTGCTTCTGCTGCTGCTGCCCTGCAGGCGTGGGACGCTTACAGCAGCGCCGACAGACCC
 CTGGCTCTGCTCCCCGACAGGCTCAGGACCACCATACCCTACCTATCCAGGATATCCCGGATTG
 CCAAATGCCATGCCATGGGCTACAACCCTACGCATATGGCCAGTACAATATGCCGTACCCACCGGTG
 TATCACCAGAGCCCGGACAGGCTCCATACCCAGGACCCAGCAGCTACCTACCCTTCCCTCAGCCCC
 CGCAGCAGTCTACTATCCACAGCAG

ACGCGTACGCGGCCGCTCGAG – GFP Tag – GTTTAA

Protein Sequence: >MG225369 representing NM_001164678
 Red=Cloning site Green=Tags(s)

MASFIWVQLKKTSEVDLAKPLVKFIQQTYPSSGEEQAQYCRAAEELSKLRRSALGRPLDKHEGALETLR
 YYDQICSIEPKFPFSENQICLTFWKFADFQKSLFSGSVKLALASLGYEKSCVLFNCAALASQIAAEQNL
 DNDEGLKTAAKQYQFASGAFHLIKDVLKLSREPTVDISPDTVGTLSLIMLAQAQEVFLLKATRDKMKD
 AIIAKLANQAADYFGDAFKQCQYKDTLPKEVFPPTLAAKQCIMQANAETHQSILAKQKKGEEIARLQHA
 AELIKNVASRYDEYVNVKDFSDKINRALTAAKDNDFIYHDRVPLDKLDLPIGKATLVKPTPVNVPVSQK
 FTDLFEKMVPVSVQSLAVFSQRKADLVNRSIAQMREATTLANGVLASLNLPAAIEDVSGDTPVQSILTK
 STSVVEQGGIQTVDQLIKELPELLQRNREILEESLRLLDDEEATDNDLRAKFKDRWQRTPSNDLYKPLRA
 EGAKFRAVLDAVQADGQVKERYQSHRDTIALLCKPEPELNAAIPSANPAKTMQGSEVSVLKSLLSNLD
 EIKKERESLENDLKSVMFDMTSKFLTALAQDGVINEEALSVTELDRIYGGTTSKVQESLKKQEGLLKNIQ
 VSHQEF SKMKQSNNEANLREEVLKNLATAYDNFVELVANLKEGTFYNELTEILVRFQNKCSDIVFARKT
 ERDELLKDLQQSIAREPSAPSI PPPAYQSSPAAGHAAAPPTAPRTMPVSTPAKPQPPARPPPPVLPANR
 VPPASAAAAPAGVGTASAAPPQTPGSAPPPQAQPPPYPTYPGYPGYCQMPMPMGYNPYAYQYNMPYPPV
 YHQPSPQAPYPGPQQPTYPFPQPPQSSYYPQQ

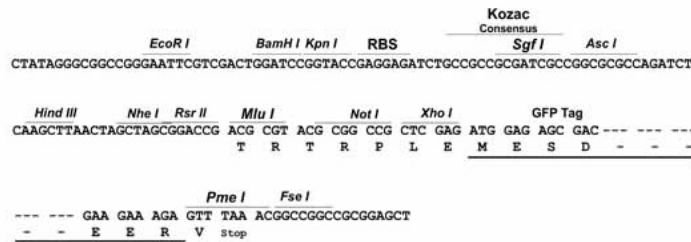
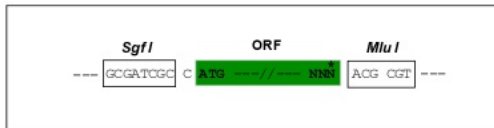
TRTRPLE - GFP Tag - V

Restriction Sites:

SgfI-MluI

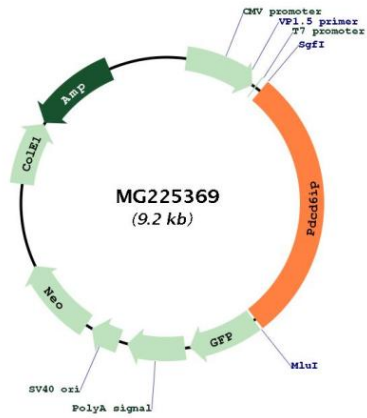
Cloning Scheme:

Cloning sites used for ORF Shuttling:



ACCN:	NM_001164678
ORF Size:	2616 bp
OTI Disclaimer:	The molecular sequence of this clone aligns with the gene accession number as a point of reference only. However, individual transcript sequences of the same gene can differ through naturally occurring variations (e.g. polymorphisms), each with its own valid existence. This clone is substantially in agreement with the reference, but a complete review of all prevailing variants is recommended prior to use. More info
OTI Annotation:	This clone was engineered to express the complete ORF with an expression tag. Expression varies depending on the nature of the gene.
Components:	The ORF clone is ion-exchange column purified and shipped in a 2D barcoded Matrix tube containing 10ug of transfection-ready, dried plasmid DNA (reconstitute with 100 ul of water).
Reconstitution Method:	<ol style="list-style-type: none">1. Centrifuge at 5,000xg for 5min.2. Carefully open the tube and add 100ul of sterile water to dissolve the DNA.3. Close the tube and incubate for 10 minutes at room temperature.4. Briefly vortex the tube and then do a quick spin (less than 5000xg) to concentrate the liquid at the bottom.5. Store the suspended plasmid at -20°C. The DNA is stable for at least one year from date of shipping when stored at -20°C.
RefSeq:	NM_001164678.1 , NP_001158150.1
RefSeq Size:	5970 bp
RefSeq ORF:	2619 bp
Locus ID:	18571
UniProt ID:	Q9WU78
Cytogenetics:	9 F3
Gene Summary:	Multifunctional protein involved in endocytosis, multivesicular body biogenesis, membrane repair, cytokinesis, apoptosis and maintenance of tight junction integrity. Class E VPS protein involved in concentration and sorting of cargo proteins of the multivesicular body (MVB) for incorporation into intraluminal vesicles (ILVs) that are generated by invagination and scission from the limiting membrane of the endosome. Binds to the phospholipid lysobisphosphatidic acid (LBPA) which is abundant in MVBs internal membranes. The MVB pathway requires the sequential function of ESCRT-O, -I, -II and -III complexes. The ESCRT machinery also functions in topologically equivalent membrane fission events, such as the terminal stages of cytokinesis. Adapter for a subset of ESCRT-III proteins, such as CHMP4, to function at distinct membranes. Required for completion of cytokinesis. May play a role in the regulation of both apoptosis and cell proliferation. Regulates exosome biogenesis in concert with SDC1/4 and SDCBP (By similarity). By interacting with F-actin, PARD3 and TJP1 secures the proper assembly and positioning of actomyosin-tight junction complex at the apical sides of adjacent epithelial cells that defines a spatial membrane domain essential for the maintenance of epithelial cell polarity and barrier (PubMed:27336173).[UniProtKB/Swiss-Prot Function]

Product images:



Circular map for MG225369