

Product datasheet for **MG225360**

Rbpjl (NM_009036) Mouse Tagged ORF Clone

Product data:

Product Type:	Expression Plasmids
Product Name:	Rbpjl (NM_009036) Mouse Tagged ORF Clone
Tag:	TurboGFP
Symbol:	Rbpjl
Synonyms:	RBP-L; Rbpsuhl
Mammalian Cell Selection:	Neomycin
Vector:	pCMV6-AC-GFP (PS100010)
E. coli Selection:	Ampicillin (100 ug/mL)



[View online »](#)

ORF Nucleotide Sequence:

>MG225360 representing NM_009036
 Red=Cloning site Blue=ORF Green=Tags(s)

TTTTGTAATACGACTCACTATAGGGCGGCCGGGAATTCGTCGACTGGATCCGGTACCGAGGAGATCTGCC
 GCC**GCGATCGCC**

ATGGACCCAGGGAGACAACAGACCCTCGTTGCCCCCGGCCCTTTGACTCACCTGAGCCTGCCGGACA
 GCTCAGAGGTGCGCTACAGAGCGACGGGCCAGCCTCCTGGGGAGTTGGACCAGGTACCCCCAGAGCA
 TGCCATCATCCTAAGAGAAGGTGTGCGCACATGCCTGCAGCAAAGATGTGAGCAGACTGTGTGGATCCTG
 CATGCCAAGTGGCTCAGAAATCCTATGAAAATGAGAAGCGTTCTTCTGTCTCCACCCTGTGTCTACC
 TCGCGGGTCTGGCTGGAGGGTGAAGCCAATGCAAGACCAAGCCCTCCAATCTGCGGAGACCGGGCCAT
 CGTCTGCGGTTACATGGGACTGGACGGTGCCTCCGGCAGCGCTCCGAGACCCAGAAGTTGAACTTTGAA
 GAGCAGCCGACTCCAGGAATTTGGTTGTCCAAGACCTGTACATCTCGGACGCCGATAAGAGGAAGC
 ACTTCCGGCTGGTGTGCGACTGGTGTGCGAGGGGGCCAGGAGCTGGGCACTTTCCACAGTGCCTCAT
 CAAGGTGATCTCAAGCCCTCGCAGAAGAAGCAGTCGTAAGAAACACAGACCTATGCATCTCCTCCGGC
 TCAAAGGTCTCCCTTTTCAATCGCTGCGCTCCAGACAGTGTCCACGCGTTACCTCTGTGGAAGATG
 GGGCCTTTGTGGCCAGCGCAAGGCAGTGGGCTGCCTTACCCTCCACCTGGCTGATGGGCACTGTTCCCA
 AGGGGACTTCCCACCCAGGAAGTTACATCCGCTACGGCTCCCTGGTGCAGTTGTCTGCACTGTACACA
 GGCATTACACTGCCGCTATGATCATCCGAAAAGTGGCCAAGCAGTGTGCCCTCCTTGATGTGGATGAAC
 CCATATCCCAGCTGCACAAGTGTGCCTTCCAGTTTCCAAGTGACACCCAGGAGGGGCTGGCACCTACTT
 ATGCCTTGCTCAGAGAAGTGGTGCATTCCAGGCTTCCCTCTGCCCAAGGAGGCCAACAGGGCGCTG
 CTAACGACAGCTCTTGTGGACCATATTGGCACGGAGTCGGTGGAGTTCACCTCAGCACCAGCTGG
 CCTGTACTCGGGAGCCCGTCACTCCGGTGCCTCATCAGCACTCTGGAGCTGAGCGGTGGAGGTGATGT
 GGCCACGCTGGAGCTGCACGGAGAAAATTTCCACGCTGGGCTCAAGGTGTGGTTCGGAGACGTGGAGGCA
 GAAACCATGTACAGGAGCCCTCGTTCCTTGGTGTGCGTAGTGCCAGACGTGGCGGCTTCCGCAGCGACT
 GGCGTTGGCTCCGCACCCCATCACCGTCCCGTGGAGTGTGCTGCGCGGGATGCACTCTTACCCCGAG
 CCCCTTCTTTTACCTACACCCGGAATACAGCGCGCTGCCACGGCTGCCAACGCGCAAGAGCCTGCC
 CCCGACGCGGACGCTCCTGGAGAGCATCCACCAGGTTACACGCGACCAACTCCATCTCTTCTGCC
 CCACC

AG**GCGACCG**ACGCGTACGCGGCCGCTCGAG - GFP Tag - GTTTAA

Protein Sequence:

>MG225360 representing NM_009036
 Red=Cloning site Green=Tags(s)

MDPRETTDPSLPPGPLTHLSLPDSSEVRLQSDGPSLLGSWTRSPPEHAILREGVRTCLQQRCEQTVWIL
 HAKVAQKSYGNEKRFFCPPPCVYLAPGWVRKPMQDQALQSAETGPIVCGYMLDASGSAPETQKLNFE
 EQPDSREFGCAKTLYISDADKRKHFRLLVRLVLRGGQELGTFHSRLIKVISKPSQKQSLKNTDLCISSG
 SKVSLFNRLRSQTVSTRYL SVEDGAFVASARQWAAFTLHLADGHCSQGDFPPQEGYIRYGLVQLVCTVT
 GITLPPMIIRKVAKQCALLDVDEPISQLHKCAFQFSDTPGGAGTYLCLASEKVVRFAQSLCPKEANRAL
 LNDSSCWTIIGTESVEFTFSTLACTREPVTVPVPLISTLELSGGGDVATLELHGENFHAGLKVWFGDVEA
 ETMYRSPRSLVCVVPDVAAFGSDWRWLRTPITVPVSLLRADALFYSPFSFYTYTPEYSALPRLPNAQEPA
 PDADTLLESIHHEFTRTNFHLFCPT

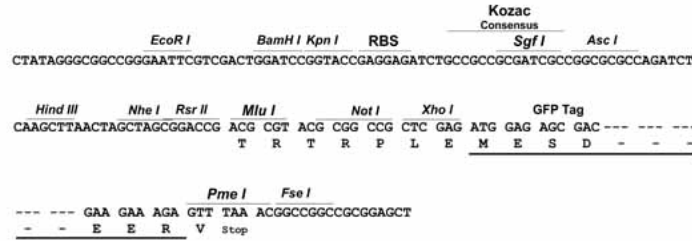
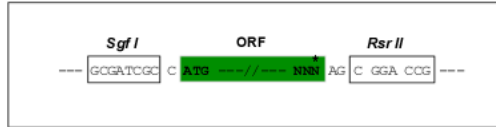
SGP**TRRRLE** - GFP Tag - V

Restriction Sites:

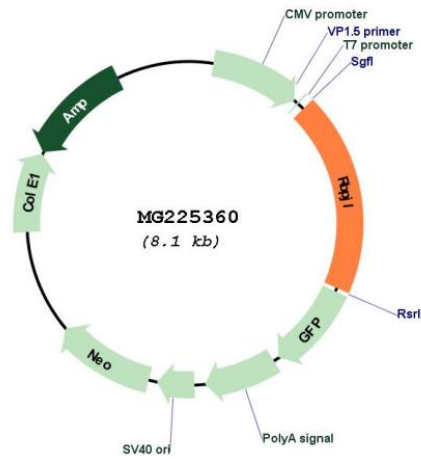
Sgfl-RsrII

Cloning Scheme:

Cloning sites used for ORF Shuttling:



Plasmid Map:



ACCN:	NM_009036
ORF Size:	1545 bp
OTI Disclaimer:	The molecular sequence of this clone aligns with the gene accession number as a point of reference only. However, individual transcript sequences of the same gene can differ through naturally occurring variations (e.g. polymorphisms), each with its own valid existence. This clone is substantially in agreement with the reference, but a complete review of all prevailing variants is recommended prior to use. More info
OTI Annotation:	This clone was engineered to express the complete ORF with an expression tag. Expression varies depending on the nature of the gene.
Components:	The ORF clone is ion-exchange column purified and shipped in a 2D barcoded Matrix tube containing 10ug of transfection-ready, dried plasmid DNA (reconstitute with 100 ul of water).
Reconstitution Method:	<ol style="list-style-type: none">1. Centrifuge at 5,000xg for 5min.2. Carefully open the tube and add 100ul of sterile water to dissolve the DNA.3. Close the tube and incubate for 10 minutes at room temperature.4. Briefly vortex the tube and then do a quick spin (less than 5000xg) to concentrate the liquid at the bottom.5. Store the suspended plasmid at -20°C. The DNA is stable for at least one year from date of shipping when stored at -20°C.
RefSeq:	NM_009036.1 , NP_033062.1
RefSeq Size:	2456 bp
RefSeq ORF:	1548 bp
Locus ID:	19668
UniProt ID:	O08674
Cytogenetics:	2 85.16 cM
Gene Summary:	Putative transcription factor, which cooperates with EBNA2 to activate transcription. [UniProtKB/Swiss-Prot Function]