

Product datasheet for **MG225357**

Sv2b (NM_153579) Mouse Tagged ORF Clone

Product data:

Product Type:	Expression Plasmids
Product Name:	Sv2b (NM_153579) Mouse Tagged ORF Clone
Tag:	TurboGFP
Symbol:	Sv2b
Synonyms:	A830038F04Rik; AI850768; mKIAA0735
Mammalian Cell Selection:	Neomycin
Vector:	pCMV6-AC-GFP (PS100010)
E. coli Selection:	Ampicillin (100 ug/mL)



[View online »](#)

ORF Nucleotide
Sequence:

>MG225357 representing NM_153579
Red=Cloning site Blue=ORF Green=Tags(s)

TTTTGTAATACGACTCACTATAGGGCGGCCGGAATTCGTCGACTGGATCCGGTACCGAGGAGATCTGCC
GCCGCGATCGCC

ATGGATGACTACAGGTATCGGGACAACATGAGGGCTATGCCCTAGTGATGGCTACTACCGTAGCAATG
AGCAGAATCAGGAAGAAGATGCACAGAGCGATGTTACAGAAGGCCATGACGAGGAAGATGAGATCTATGA
AGGCGAGTACCAAGGCATCCCTCATCCAGATGATGTCAAGTCTAAGCAGACCAAGATGGCGCCCTCCAGA
GCAGATGGTCTTGGGGGCCAGGCAGACTTGATGGCTGAGAGGATGGAAGATGAGGAGGAGCTGGCTCACC
AATATGAGACCATTGATGAGTGTGGCCATGGGCGCTTCCAGTGGACCCTCTTCTTCTGCTTGGGTTT
GGCCTTGATGGCTGATGGAGTGGAAATATTTGTAGTGAGCTTGTCTGCCAAGTGCAGAGAAAGACATG
TGTCTGCCAGTCCAAGAAAGGAATGCTTGGGCTGATAGTCTACCTAGGAATGATGGCAGGGGCCCTTCA
TCTTGGGCGCCCTGGCTGATAAACTGGGAAGGAAGAAGGTCCTCAGCATGCTACTGGCCATCAATGCCTC
CTTTGCTTCACTCTCCTCTTCTGTCAGGGATATGGAGCCTTCTCTTCTGCAGACTCATCTCAGGCATA
GGGATTGGGGGCTCCCTGCCAATGTTTTTGCCTACTTTTCTGAGTTCCTATCACGAGAGAAACGGGGT
AGCATCTTAGCTGGCTGGGCATCTTCTGGATGACTGGAGGCATCTATGCATCTGCCATGGCTGGAGCAT
CATTCCACACTATGGCTGGGGCTTCCAGCATGGGGACTAATTACCCTTCCACAGCTGGAGAGTGTGTC
ATCGTCTGTGCTCTGCCCGCCACTGTGTCCATGGTGGCTCTGAAGTTCATGCCAGAAAGCCCCAGGTTCC
TGCTGGAGATGGGCAAACATGATGAAGCCTGGATGATTCTCAAACAAGTCCATGATACAAACATGAGAGC
TAAGGGGACCCCGAAAAGGTGTTACGGTTCACGCATCAAACACTCCCAAGCAAATGGATGAATTCATT
GAGATACAGAGCTCAACCGAACTTGGTACCAGCGCTGGCTGGTCAAGTTCATGACCATTTTCAAACAGG
TCTGGGATAACGCCTTGTACTGTGTGATGGGGCCCTACAGAATGAACACCCTGATTCTGGCTGTGGTCTG
GTTACCATGGCCTTAAGTTACTACGGCCTGACGGTGTGGTTCCTCCGACATGATCCGCTATTTCCAGGAT
GAAGAATAAAGTCTAAAATGAAGTGTTTTTTGGTGAGCACGTGCATGGCGCCACGATCAACTTTACCA
TGGAAAACCAGATCCACCAACATGGGAAGCTTGTGAACGATAAGTTCATAAAGATGATTTTTAAACATGT
CCTCTTTGAGGACACATTTCTTTGACAAATGCTATTTTGAAGATGTGACATCCACAGATACGTATTTCAAG
AACTGCACCATCGAATCGACCACCTTCTACAACACAGACCTCTACAAACACAAGTTCATCAACTGTCGGT
TTATCAATCCACCTTTCTGGAGCAGAAGGAGGGCTGCCACATGGACTTTGAAGAGGACAATGATTTTCT
GATTTACCTCGTCAGCTTCTCGGCAGCCTCTCTGTCTTGCTGGGAACATAATTTCTGCCCTGCTCATG
GACAGAATTGGAAGACTCAAGATGATTGGCGGCTCCATGCTCATCTCTGCAGTCTGCTGCTTCTTCTGT
TTTTTGGCAACAGCGAGTCTGCGATGATCGGCTGGCAATGCCTGTCTGTGGGACCAGCATTGCAGCCTG
GAATGCTCTGGATGTGATCACAGTTGAGCTGTATCCCACCAACCAGAGGGCCACGGCCTTCGGCATCCTC
AACGGACTGTGCAAGTTTGGGGCCATCCTGGGAAACACTATCTTTGCTTCTTTTGTGGGATAACCAAAG
TGGTCCCCATCCTTCTGGCTGCTGCTTCTGTTGGAGGTGGCCTGATTGCCCTTCGATTGCCAGAGAC
TCGAGAGCAAGTCTGATG

ACGCGTACGCGGCCGCTCGAG - GFP Tag - GTTTAA

Protein Sequence: >MG225357 representing NM_153579
 Red=Cloning site Green=Tags(s)

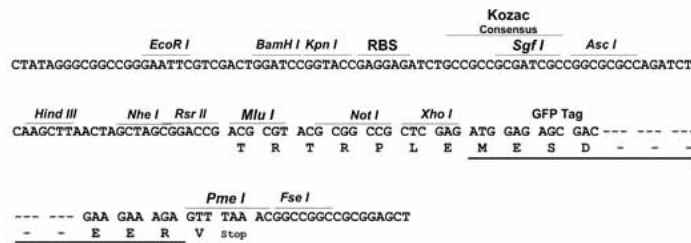
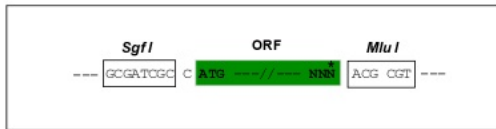
MDDYRYRDNYEGYAPSDGYYSNEQNQEEDAQSDVTEGHDEEDEIYEGEYQGIPHPDDVKSQTKMAPSR
 ADLGGQADLMAERMEDEEELAHQYETIIDECEGHGRFQWTLFFVLGLALMADGVEIFVVSFALPSAEKDM
 CLSSSKKGMGLIVYLGMMAGAFILGGLADKLGRKKVLSMSLAINASFASLSSFVQGYGAFLLFCRLISGI
 GIGGSLPIVFAYFSEFLSREKRGEHL SWLGIFWMTGGIYASAMAWSIIPHYGWGFSMGTYHFHHSWRVVFV
 IVCALPATVSMVALKFPESPFLLEMGKHDEAWMILKQVHDTNMRAGTPEKVFVTVSHIKTPKQMDDEFI
 EIQSSTGTWYQRWLVRFMTIFKQVWDNALYCVMPYRMNTLILAVVWFTMALSYGLTVWFPMIRYFQD
 EEYKSKMKVFFGEHVHGATINFTMENQIHQHGKLVNDKFIKMYFKHVLFDFTFDKCYFEDVTDSTDYFK
 NCTIESTTFYNTDLYKHKFINCRFINSTFLEQKEGCHMDFEEDNDFLIYLVSFLGSLVLPNGNIISALLM
 DRIGRLKMIIGSMLISAVCCFFLFFGNSESAMIGWQCLFCGTSIAAWNALDVITVELYPTNQRATAFGIL
 NGLCKFGAILGNTIFASFVGITKVVPIILLAAASLVGGGLIALRLPETREQVLM

TRTRPLE - GFP Tag - V

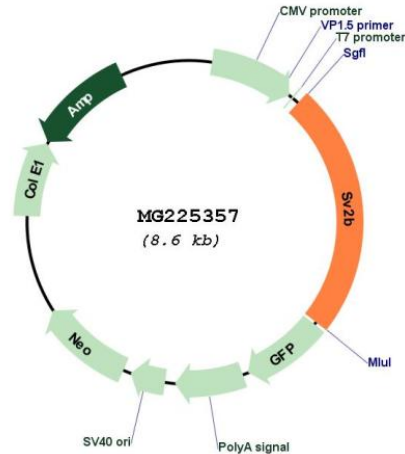
Restriction Sites: SgfI-MluI

Cloning Scheme:

Cloning sites used for ORF Shutting:



Plasmid Map:



ACCN: NM_153579

ORF Size: 2049 bp

OTI Disclaimer: The molecular sequence of this clone aligns with the gene accession number as a point of reference only. However, individual transcript sequences of the same gene can differ through naturally occurring variations (e.g. polymorphisms), each with its own valid existence. This clone is substantially in agreement with the reference, but a complete review of all prevailing variants is recommended prior to use. [More info](#)

OTI Annotation: This clone was engineered to express the complete ORF with an expression tag. Expression varies depending on the nature of the gene.

Components: The ORF clone is ion-exchange column purified and shipped in a 2D barcoded Matrix tube containing 10ug of transfection-ready, dried plasmid DNA (reconstitute with 100 ul of water).

Reconstitution Method:

1. Centrifuge at 5,000xg for 5min.
2. Carefully open the tube and add 100ul of sterile water to dissolve the DNA.
3. Close the tube and incubate for 10 minutes at room temperature.
4. Briefly vortex the tube and then do a quick spin (less than 5000xg) to concentrate the liquid at the bottom.
5. Store the suspended plasmid at -20°C. The DNA is stable for at least one year from date of shipping when stored at -20°C.

RefSeq: [NM_153579.4](#), [NP_705807.2](#)

RefSeq Size: 5548 bp

RefSeq ORF: 2052 bp
Locus ID: 64176
UniProt ID: [Q8BG39](#)
Cytogenetics: 7 D1
Gene Summary: Probably plays a role in the control of regulated secretion in neural and endocrine cells.
[UniProtKB/Swiss-Prot Function]