

## Product datasheet for **MG225327**

### Tek (NM\_013690) Mouse Tagged ORF Clone

#### Product data:

Product Type:	Expression Plasmids
Product Name:	Tek (NM_013690) Mouse Tagged ORF Clone
Tag:	TurboGFP
Symbol:	Tek
Synonyms:	AA517024; Cd202b; Hyk; STK1; Tie-2; Tie2
Mammalian Cell Selection:	Neomycin
Vector:	pCMV6-AC-GFP (PS100010)
E. coli Selection:	Ampicillin (100 ug/mL)
ORF Nucleotide Sequence:	>MG225327 representing NM_013690 Red=Cloning site Blue=ORF Green=Tags(s)

TTTTGTAATACGACTCACTATAGGGCGGCCGGAATTCGTCGACTGGATCCGGTACCGAGGAGATCTGCC  
GCC**CGATCGCC**

ATGGACTCTTTAGCCGGCTTAGTCTCTGTGGAGTCAGCTTGCTCCTTTATGGAGTAGTAGAAGCGCCA  
TGGACCTGATCTTGATCAATTCCTACCTCTTGTGTCTGATGCCGAAACATCCCTCACCTGCATTGCCTC  
TGGGTGGACCCCATGAGCCATCACCATAGGAAGGGACTTTGAAGCCTAATGAACCAGCACCAAGAT  
CCACTGGAGTTACTCAAGATGTGACCAGAGAATGGGCGAAAAAGTTGTTTGAAGAGAGAAAAAGCCA  
GTAAGATTAATGGTGCTATTTCTGTGAAGGTCGAGTTCGAGGACAGGCTATAAGGATACGGACCATGAA  
GATGCGTCAACAAGCATCCTTCTACCTGCTACTTTAACTATGACCGTGGACAGGGGAGATAATGTGAAC  
ATATCTTTCAAAAAGGTGTTAATTAAGAAGAAGATGCAGTGATTTACAAAAATGGCTCCTTCATCCACT  
CAGTGCCCGGCATGAAGTACCTGATATTTTAGAAGTTCACTTGCCGCATGCTCAGCCCCAGGATGCTGG  
TGTGTAAGTCTGAGGAGGACATAGGAGGAAACCTGTTACCTCAGCCTTACCAGGCTGATTGTTCCGAGA  
TGTGAAGTCTCAGAAGTGGGGGCCGACTGTAGCCGTCCTGTACTACTTGCAAGAACAATGGAGTCTGCC  
ATGAAGATACCGGGGAATGCATTTGCCCTCCTGGGTTTATGGGGAGAACATGTGAGAAAGCTTGTGAGCC  
GCACACATTTGGCAGGACCTGTAAGAAAGGTGTAGTGGACCAGAAGGATGCAAGTCTTATGTGTCTGT  
CTCCCAGACCTTACGGGTGTTCTGTGCCACAGGCTGGAGGGGTTGCAGTGAATGAAGCATGCCCAT  
CTGGTTACTACGGACAGACTGTAAGCTCAGGTGCCACTGTACCAATGAAGAGATATGTGATCGGTTCCA  
AGGATGCCTCTGCTCTCAAGGATGGCAAGGCTGCAAGTGTGAGAAAGAAGGCAGGCCAAGGATGACTCCA  
CAGATAGAGGATTTGCCAGATCACATTGAAGTAAACAGTGGAAAAATTAACCCCATCTGCAAAGCCTCTG  
GGTGGCCACTACCTACTAGTGAAGAAATGACCCTAGTGAAGCCAGATGGGACAGTCTCAACCAAAATGA  
CTTCAACTATACAGATCGTTTCTCAGTGGCCATATTCAGTGTCAACCGAGTCTTACCTCCTGACTCAGGA  
GTCTGGGCTGCAAGTGTGAACACAGTGGCTGGGATGGTGGAAAAGCCTTTCAACATTTCCGTCAAAGTTC  
TTCCAGAGCCCTGCACGCCCAAATGTGATTGACACTGGACATAACTTTGCTATCATCAATATCAGCTC  
TGAGCCTTACTTTGGGATGGACCCATCAAATCCAAGAAGCTTTTCTATAAACCTGTCAATCAGGCTGG



[View online »](#)

AAATACATTGAAGTGACGAATGAGATTTTCACTCTCAACTACTTGGAGCCGCGGACTGACTACGAGCTGT  
 GTGTGCAGCTGGCCCGTCTGGAGAGGGTGGAGAAGGGCATCCTGGGCTGTGAGACGATTTACAACAGC  
 GTCTATCGGACTCCCTCCTCCAAGAGGTCTCAGTCTCCTGCCAAAAAGCCAGACAGCTCTAAATTTGACT  
 TGGCAACCGATATTTACAAACTCAGAAGATGAATTTATGTGGAAGTTCGAGAGGGCATCCCTGCAAAACA  
 CAAGTGATCAGCAGAACATCAAAGTGCCTGGGAACCTGACCTCGGTGCTACTGAGCAACTAGTCCCCAG  
 GGAGCAGTACACAGTCCGAGCTAGAGTCAACACCAAGGCGCAGGGGAGTGGAGTGAAGAAGTCAAGGCC  
 TGGACCCCTTAGTACATTCTCCCTCAACCAAGAAAACATCAAGATCTCCAACATCACTGACTCCACAG  
 CTATGGTTTCTTGACAATAGTGGATGGCTATTGATTTCTCCATCATCATCCGGTATAAGGTTACAGG  
 CAAAAATGAAGACCAGCACATTGATGTGAAGATCAAGAATGCTACCGTACTCAGTACCAGCTCAAGGGC  
 CTAGAGCCAGAGACTACATACCATGTGGATATTTTGTGAGAACAACATAGGATCAAGCAACCCAGCCT  
 TTTCTCATGAACTGAGGACGCTTCCACATTCGCCAGCCTGCGAGACCTCGGAGGGGAAAGATGCTACT  
 CATAGCCATCCTTGGTTCGGCTGGAATGACTTGCATCACCGTGTGTGGCGTTTCTGATTATGTTGCAA  
 CTGAAGAGAGCAAATGTCCAAGGAGAATGGCTCAGGCATTCCAGAACGTGAGAGAAGAACCAGCTGTGC  
 AGTTTAACTCAGGAACTCTGGCCCTAACAGGAAGGCCAAAAACAATCCGGATCCCACAATTTATCCTGT  
 GCTTGACTGGAATGACATCAAGTTTCAAGACGTGATCGGAGAGGGCAACTTTGGCCAGTTCTGAAGGCA  
 CGCATCAAGAAGGATGGGTTACGGATGGATGCCGCCATCAAGAGGATGAAAGAGTATGCCTCCAAGATG  
 ATCACAGGGACTTCGAGGAGAAGTGGAGTTCTTTGTAAGTGGACACCATCCAACATCATTAACT  
 CTTGGGAGCATGTGAACCCGAGGCTATTTGTACCTAGCTATTGAGTATGCCCGCATGGAACCTCCTG  
 GACTTCTGCGTAAGAGCAGAGTGTAGAGACAGACCCTGCTTTTGCATCGCCAACAGTACAGCTTCCA  
 CACTGTCTCCCAACAGCTTCTTCAATTTGCTGCAGATGTGGCCCGGGGATGGACTACTTGAGCCAGAA  
 ACAGTTTATCCACAGGGACCTGGCTGCCAGAAACATTTAGTTGGTGAAGTACATAGCCAAAATAGCA  
 GATTTTGGATTGTACGAGGTCAAGAAGTGTATGTGAAAAGACAATGGGAAGGCTCCAGTTCGTTGGA  
 TGGCAATCGAATCACTGAACTATAGTGTCTATACAACCAACAGTGTGTCTGGTCTATGGTGTATTGCT  
 CTGGGAGATTGTAGCTTAGGAGCACCCCTACTGCGGCATGACGTGCGCGGAGCTCTATGAGAAGCTA  
 CCCCAGGGCTACAGGCTGGAGAAGCCCTGAACTGTGATGATGAGGTGTATGATCTAATGAGACAGTGT  
 GGAGGGAGAAGCCTTATGAGAGACCATCAATTTGCCAGATATTGGTGTCTTAAACAGGATGCTGGAAGA  
 ACGGAAGACATACGTGAACACCACACTGTATGAGAAGTTACCTATGCAGGAATTGACTGCTCTGCGGAA  
 GAAGCAGCC

ACGCGTACGCGGCCGCTCGAG - GFP Tag - GTTTAA

Protein Sequence:

>MG225327 representing NM\_013690  
 Red=Cloning site Green=Tags(s)

MDSL AGLVLCGVSLLLYGVEGAMDLILINSLPLVSDAETSLTCIASGWHPHEPITIGRDFEALMNQHQD  
 PLEVTDQVTREWAKKVVWKREKASKINGAYFCEGRVGRQAIRIRTMKMRQQASFLPATLTMTVDRGDVNV  
 ISFKKVLIKEEDAVIYKNGSFIHSVPRHEVPDILEVHLPHAQPDAGVYSARYIGGNLFTSAFTRLIVRR  
 CEAQKWGPDCSRPCTTCKNNGVCHEDTGEICPPGFMGRTEKACEPHTFGRTCKERCSPGEGCKSYVFC  
 LPDPYGCSCATGWRGLQCNEACPSGYYGPDCKLRCHCTNEEICDRFQGCSCSQGWQLQCEKEGRPRMTP  
 QIEDLPDHIEVNSGKFNPICKASGWPLPTSEEMTLVKPDGTVLQPNDFNYTDRFSVAIFTVNRVLPDPSG  
 VVWCSVNTVAGMVEKPFNISVKVLEPELHAPNVIDTGHNFAINISSEPYFGDGPISKKLKYKPVNQAW  
 KYIEVTNEIFTLNLEPRTDYELCVQLARPEGEGEGHPGVRFFTTASIGLPPRGLSLLPKSQTALNLT  
 WQPIFTNSEDEFYVEVERRSLQTTSDQQNIKVPGNLTSVLLSNLVPREQYTVRARVNTKAQGEWSEELRA  
 WTLSDILPPQENIKISNITDSTAMVSWTIVDGYSSIIIRYKVGKNEQDQIDVKIKNATVTQYQLKG  
 LEPETTYHVDIFAENNISSNPAF SHELRTLPHSPASADLGGGKMLLIAILGSAGMTCITVLLAFLIMLQ  
 LKRANVQRMAQAFQNVREEPVQFNSGTLALNRKAKNNPDPTIYPVLDWNDIKFQDVIQEGNFGQVLLKA  
 RIKKDGLRMDAAIKRMKEYASKDDHRDFAGELEVLCKLGHPHNIINLLGACEHRGYLAIEYAPHGNLL  
 DFLRKSRLVLETDPAFAIANSTASTLSSQQLLHFAADVARGMDYLSQKQFIHRDLAARNILVGENYIAKIA  
 DFGLSRQEVYVKKTMGRLPVRWMAIESLNYSVYTTNSDVWSYGVLLWEIVSLGGTPYCGMTCAELYEKL  
 PQGYRLEKPLNCDDEVYDLMRQCWREKPYERPSFAQILVSLNRMLEERKTYVNTTLYEKFTYAGIDCSAE  
 EAA

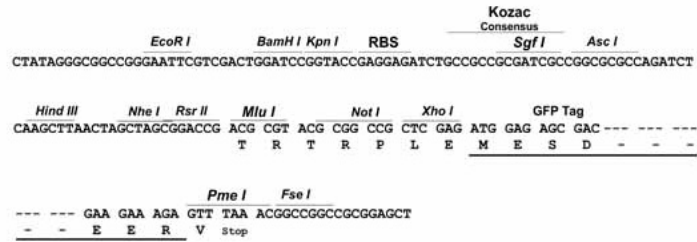
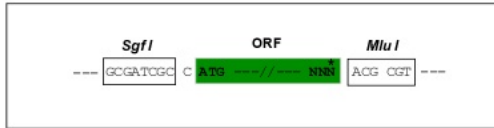
TRTRPLE - GFP Tag - V

Chromatograms: [https://cdn.origene.com/chromatograms/ja1827\\_a01.zip](https://cdn.origene.com/chromatograms/ja1827_a01.zip)

Restriction Sites: SgfI-MluI

Cloning Scheme:

Cloning sites used for ORF Shuttling:



ACCN: NM\_013690

ORF Size: 3369 bp

**OTI Disclaimer:** Due to the inherent nature of this plasmid, standard methods to replicate additional amounts of DNA in E. coli are highly likely to result in mutations and/or rearrangements. Therefore, OriGene does not guarantee the capability to replicate this plasmid DNA. Additional amounts of DNA can be purchased from OriGene with batch-specific, full-sequence verification at a reduced cost. Please contact our customer care team at [custsupport@origene.com](mailto:custsupport@origene.com) or by calling 301.340.3188 option 3 for pricing and delivery.

The molecular sequence of this clone aligns with the gene accession number as a point of reference only. However, individual transcript sequences of the same gene can differ through naturally occurring variations (e.g. polymorphisms), each with its own valid existence. This clone is substantially in agreement with the reference, but a complete review of all prevailing variants is recommended prior to use. [More info](#)

**OTI Annotation:** This clone was engineered to express the complete ORF with an expression tag. Expression varies depending on the nature of the gene.

**Components:** The ORF clone is ion-exchange column purified and shipped in a 2D barcoded Matrix tube containing 10ug of transfection-ready, dried plasmid DNA (reconstitute with 100 ul of water).

**Reconstitution Method:**

1. Centrifuge at 5,000xg for 5min.
2. Carefully open the tube and add 100ul of sterile water to dissolve the DNA.
3. Close the tube and incubate for 10 minutes at room temperature.
4. Briefly vortex the tube and then do a quick spin (less than 5000xg) to concentrate the liquid at the bottom.
5. Store the suspended plasmid at -20°C. The DNA is stable for at least one year from date of shipping when stored at -20°C.

**RefSeq:** [NM\\_013690.3](#)

**RefSeq Size:** 4654 bp

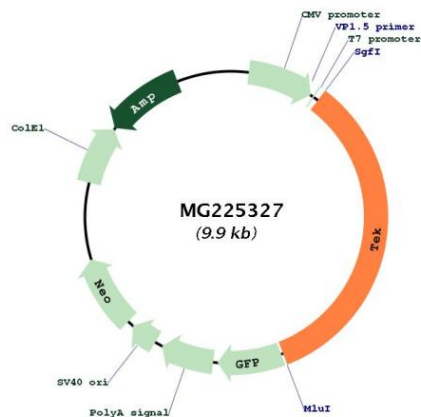
**RefSeq ORF:** 3372 bp

**Locus ID:** 21687

**Cytogenetics:** 4 43.34 cM

**Gene Summary:**

Tyrosine-protein kinase that acts as cell-surface receptor for ANGPT1, ANGPT2 and ANGPT4 and regulates angiogenesis, endothelial cell survival, proliferation, migration, adhesion and cell spreading, reorganization of the actin cytoskeleton, but also maintenance of vascular quiescence. Has anti-inflammatory effects by preventing the leakage of proinflammatory plasma proteins and leukocytes from blood vessels. Required for normal angiogenesis and heart development during embryogenesis. Required for post-natal hematopoiesis. After birth, activates or inhibits angiogenesis, depending on the context. Inhibits angiogenesis and promotes vascular stability in quiescent vessels, where endothelial cells have tight contacts. In quiescent vessels, ANGPT1 oligomers recruit TEK to cell-cell contacts, forming complexes with TEK molecules from adjoining cells, and this leads to preferential activation of phosphatidylinositol 3-kinase and the AKT1 signaling cascades. In migrating endothelial cells that lack cell-cell adhesions, ANGPT1 recruits TEK to contacts with the extracellular matrix, leading to the formation of focal adhesion complexes, activation of PTK2/FAK and of the downstream kinases MAPK1/ERK2 and MAPK3/ERK1, and ultimately to the stimulation of sprouting angiogenesis. ANGPT1 signaling triggers receptor dimerization and autophosphorylation at specific tyrosine residues that then serve as binding sites for scaffold proteins and effectors. Signaling is modulated by ANGPT2 that has lower affinity for TEK, can promote TEK autophosphorylation in the absence of ANGPT1, but inhibits ANGPT1-mediated signaling by competing for the same binding site. Signaling is also modulated by formation of heterodimers with TIE1, and by proteolytic processing that gives rise to a soluble TEK extracellular domain. The soluble extracellular domain modulates signaling by functioning as decoy receptor for angiopoietins. TEK phosphorylates DOK2, GRB7, GRB14, PIK3R1, SHC1 and TIE1.[UniProtKB/Swiss-Prot Function]

**Product images:**


Circular map for MG225327