

Product datasheet for **MG225302**

Dnm1l (NM_152816) Mouse Tagged ORF Clone

Product data:

Product Type:	Expression Plasmids
Product Name:	Dnm1l (NM_152816) Mouse Tagged ORF Clone
Tag:	TurboGFP
Symbol:	Dnm1l
Synonyms:	6330417M19Rik; AI450666; Dlp1; Dnm; Dnmlp1; Dr; Drp1; pyt; python
Mammalian Cell Selection:	Neomycin
Vector:	pCMV6-AC-GFP (PS100010)
E. coli Selection:	Ampicillin (100 ug/mL)



[View online »](#)

ORF Nucleotide Sequence:

>MG225302 representing NM_152816
 Red=Cloning site Blue=ORF Green=Tags(s)

TTTTGTAATACGACTCACTATAGGGCGGCCGGAATTCGTCGACTGGATCCGGTACCGAGGAGATCTGCC
 GCC**CGCATCGCC**

ATGGAGGCGCTGATCCCGTTCATCAATAAGCTGCAGGACGTCTTCAACACAGTGGGTGCGGACATCATCC
 AGCTGCCTCAGATCGTCGTAGTGGGAACGAGCAGTGGGAAGAGCTCAGTGCTGGAAAGCCTAGTGGG
 CAGGGACCTTCTCCAGAGGAAGTGGTGTGGTACCCGAGACCTCTCATTCTGCAGCTAGTCCACGTT
 TCACCAGAAGATAAAAGAAAAACAACAGGAGAAGAAAATGACCCTGCCACATGGAAAACTCAAGACACC
 TTTCCAAAGGAGTTGAAGCAGAAGAATGGGGTAAATTTCTTACACCAAAAAACAAGCTTTACACAGATTT
 TGATGAAATTCGACAAGAAATGAAAATGAAACTGAAAGAATTTACAGGAAATAATAAGGGGGTAAGCCCT
 GAGCCAATCCATCTCAAGTTTTCTCGCCCAACGTTGTCAACCTGACACTTGTGGATTTACCGGGAATGA
 CCAAAGTACCTGTAGGCGATCAGCCCAAGGACATCGAGCTTCAGATCAGAGAACTTATTCTCGTTTCAT
 CAGTAATCCCAATTCATTATCCTCGCCGTCACCTGCTGCAAAATACAGATATGGCAACATCAGAAGCACTC
 AAGATTTCCAGAGAGGTAGATCCAGATGGGCGCAGAAGCTTAGCTGTAATCACTAAAATTGATCTCATGG
 ATGCGGGTACTGATGCCATGGATGATTGATGGGAAGGGTTATTCCAGTCAAGCTTGGAAATAATTGGAGT
 AGTTAACAGAAGCCAAGTGGATTAACAATAAGAAGAGTGAATGATTCAATCCGTGATGAGTATGCT
 TTTCTTAAAAGAAGTACCCATCTCTGGCCAACAGAAAATGGAACAAAGTATCTTGCTAGGACCCTGAATA
 GGTTACTTATGCATCATATCAGAGATTGTTTACCAGAGCTGAAAACAAGAATAAATGTCTTAGCTGCTCA
 GTATCAGTCTCTTCTAAATAGCTATGGTGAACCGTGGATGATAAAAAGTGTACTTTACTCCAGCTTATT
 ACCAAATTTGCCACAGAGTATTGTAACAGATTGAAGGAACCGCAAAGTACATTGAAACTTCTGAGCTAT
 CCGGTGGTGTAGGATTTGTTATATTTTCCATGAGACTTTCGGGGCAACCTTAGAATCTGTGGACCCACT
 AGGTGGCCTTAACACTATTGACATCCTGACTGCCATCAGAAATGCTACTGGCCCCGTCCTGCTTTATTT
 GTGCCTGAAGTTTCATTTGAGTTACTGGTCAAACGTCAGATTAAGCGTCTAGAAGAGCCAGCCTACGGT
 GTGTGGAGCTGGTCCATGAGGAGATGCAGAGGATCATTGAGCATTGTAGCAATTACAGCACACAGGAATT
 GTTACGGTTCCTAAACTTACGATGCCATAGTTGAAAGTGTGACCTGTCTTCTTCGTAAGAGTTGCC
 GTGACAAATGAAATGGTGCATAACTTAGTGCAATTGAGCTAGCGTATATCAACACAAAACACCCCGACT
 TTGCTGATGCCTGTGGGTAATGAACAATAATATAGAGGAACAAAGAAGAAACAGGCTAGCAAGAGAGCT
 GCCTTCAGCTGGATCACGGGACAAGTCCCATCTGCAGGTGGTGGGATTGGAGACGGTGGTCAGGAACCA
 ACAACAGGCAACTGGAGAGGAATGCTGAAAACCTCAAAGCTGAAGAATTACTTGTGAAGAAAAATCAA
 AACCAATTCCAATTATGCCAGCAAGTCCACAGAAAGGCCATGCTGTCAATTTGCTAGATGTGCCAGTTCC
 AGTTGCAAGAAAAGTGTCTGCCCAGAGACGCGAGATTGTGAGGTTATTGAAAGACTTATCAAATCATAT
 TTTCTAATTGTCAGAAAGAATATTCAAGACAGTGTCCAAAGGCAGTAATGCATTTTTGGTTAATCATG
 TGAAAGATACTCTTACAGTGAAGTGGTGGGAGCTGTATAAGTCATCCTTATTAGATGACCTTCTGAC
 TGAATCCGAGGACATGGCCCAACGAAGAAAAGAAGCAGCGGATATGCTGAAGGCATTACAAGGAGCCAGT
 CAAATTATTGCTGAAATCCGAGAGACTCATCTTTGG

ACGCGTACGCGGCCGCTCGAG - GFP Tag - **GTTTAA**

Protein Sequence: >MG225302 representing NM_152816
 Red=Cloning site Green=Tags(s)

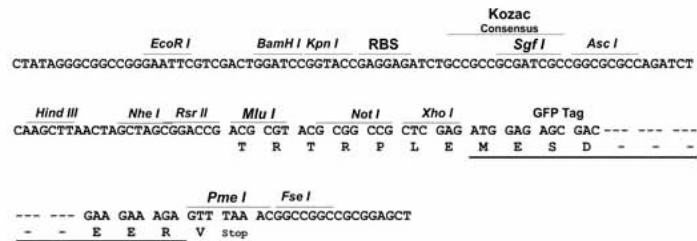
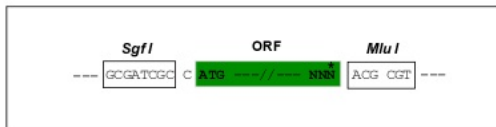
MEALIPVINKLQDVFNVTGADIIQLPQIVVVGTSQSSGKSSVLESVGRDLLPRGTGVVTRRPLILQLVHV
 SPEDKRKTTGEENDPATWKNRHL SKGVEAEWGF LHTKNKLYTDFDEIRQEIENETERISGNKGVSP
 EPIHLKVFSPNVNLTLDLPGMTKVPVGDQPKDIELQIRELILRFISNPNSIILAVTAANTDMATSEAL
 KISREVDPDGRRTLAVITKLDLMDAGTDAMDVLMGRVIVPKLGIIGVVNRSQLDINNKSVTDSIRDEYA
 FLQKKYPSLANRNGTKYLARTLNRLMHHIRDCLPELKTRINVLAQYQSLLSYGEVDDKSATLLQLI
 TKFATEYCNTIEGTAKYIETSEL CGGARICYIFHETFGRTLESVDPLGGLNTIDILTAIRNATGPRPALF
 VPEVSFELLVKRQIKRLEEPSLRCVELVHEEMQRIIQHCSNYSTQELLRFPKLHDAIVEVVTCLLRKRLP
 VTNEMVHNLVAIELAYINTKHPDFADACGLMNNNIEEQRRNRLARELPSAGSRDKVPSAGGGIGDGGQEP
 TTGNWRGMLKTSKAEELLAEEKSKPIPIIMPASPQKGHAVNLLDVPVPVARKLSAREQRDCEVIERLIKSY
 FLIVRKNIQDSVPKAVMHFLVNHVKDTLQSELVGQLYKSSLLDLDLLESEDMAQRRKEAADMLKALQGAS
 QIIAEIRETHLW

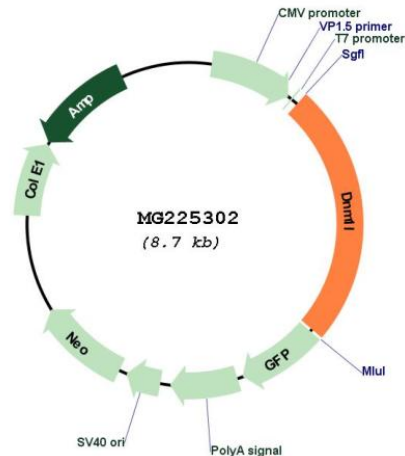
TRTRPLE - GFP Tag - V

Restriction Sites: SgfI-MluI

Cloning Scheme:

Cloning sites used for ORF Shutting:



Plasmid Map:


ACCN: NM_152816

ORF Size: 2136 bp

OTI Disclaimer: The molecular sequence of this clone aligns with the gene accession number as a point of reference only. However, individual transcript sequences of the same gene can differ through naturally occurring variations (e.g. polymorphisms), each with its own valid existence. This clone is substantially in agreement with the reference, but a complete review of all prevailing variants is recommended prior to use. [More info](#)

OTI Annotation: This clone was engineered to express the complete ORF with an expression tag. Expression varies depending on the nature of the gene.

Components: The ORF clone is ion-exchange column purified and shipped in a 2D barcoded Matrix tube containing 10ug of transfection-ready, dried plasmid DNA (reconstitute with 100 ul of water).

Reconstitution Method:

1. Centrifuge at 5,000xg for 5min.
2. Carefully open the tube and add 100ul of sterile water to dissolve the DNA.
3. Close the tube and incubate for 10 minutes at room temperature.
4. Briefly vortex the tube and then do a quick spin (less than 5000xg) to concentrate the liquid at the bottom.
5. Store the suspended plasmid at -20°C. The DNA is stable for at least one year from date of shipping when stored at -20°C.

RefSeq: [NM_152816.3](#), [NP_690029.2](#)

RefSeq Size: 4078 bp

RefSeq ORF: 2139 bp

Locus ID: 74006

UniProt ID: [Q8K1M6](#)

Cytogenetics: 16 A2

Gene Summary: This gene encodes a member of the dynamin family. The encoded protein is localized to the cytoplasm and mitochondrial membrane, is involved in mitochondrial and peroxisomal division, and is essential for mitochondrial fission. Alternative splicing results in multiple transcript variants. A related pseudogene has been identified on chromosome 2. [provided by RefSeq, Feb 2013]