

Product datasheet for **MG225278**

Adcy5 (NM_001012765) Mouse Tagged ORF Clone

Product data:

Product Type: Expression Plasmids
Product Name: Adcy5 (NM_001012765) Mouse Tagged ORF Clone
Tag: TurboGFP
Symbol: Adcy5
Synonyms: Ac5; AW121902
Mammalian Cell Selection: Neomycin
Vector: pCMV6-AC-GFP (PS100010)
E. coli Selection: Ampicillin (100 ug/mL)
ORF Nucleotide Sequence: >MG225278 representing NM_001012765
Red=Cloning site Blue=ORF Green=Tags(s)

GCCGGGAATTCGTCGACTGGATCCGGTACCGAGGAGATCTGCCGCCGGATCGCCGGCCGCCAGATCTCAAGCTTAACTAGCTAGCGGACCGAC

ATGTCCGGCTCCAAAAGCGTGAGCCCCCGGGTACGCTGCACAGACAGCGGGCTCGCCAGCGCCCCGGG
GAGGCCCGGAGCATCGCGCCGTTGGGGAGAAGCCGATTCCCGCGCCAATGGCTACCCCCACGCCCCCGG
GGGATCAACCCCGGGTCCACCAAGAGATCTGGGGGAGCGGTGACCCACAACAGCAGCAGCGCTGGCC
AGCCGTTGGCGGGTGGCGATGACGACGAAGACCCTCCACTAAGCGGTGATGACCCTCTGGCTGGGGCT
TCGGCTTCAGCTTCGCTCTAAGTCCGCTGGCAGGAGCGGGTGGCGACGACGGCGGTGCGGCAGCAG
GCGGCAGCGGGGGCGGGTGGAGGGGGCAGCACCCGGGGCCCCCTGCGGGCGGCAGCGGCAGTTTCG
GCGGCCGCCGAGCGGCCGAGGTGGCACAGAGGTGCGCCCCGCTCGGTGGAGCTGGGCCTGGAGGAGC
GTGAGGAAAAGGCCGAGCGGCCGAGGAGCTGGAGCCCGGGACTGGCATCGTCCGAGGATGGAGACGGGTC
GGAGGATGGAGGCAGTTCTGTGGCGTCAGGCTCTGGGACCGCGCGGTGCTGTGCTGGGCGCCTGCTGC
CTGGCCTTGCTGCAGATATCCGCTCTAAGAAGTTCGCTCGGACAACTGGAGCGTCTGTACCAGCGCT
ACTTCTCCGCTGAACAGAGCAGTCTCACCATGCTCATGGCCGTGCTGGTCTGTGTGCCTGGTCTCAT
GCTGGCTTCCACGCGCGCGCCCCGCTCCAGATAGCCTACCTGGCCGTGTTGGCAGCTGCTGTGGGC
GTGATCCTTATCATGGCCGTGCTCTGCAACCGTGCAGCGTCCACCAGGACCACATGGGCCTGGCCTGCT
ATGCGCTCATTGCAGTGGTCTGGCCGTCAGGTAGTGGCCGTTGCTGCCACAGCCACGCGCCCTC
CGAGGGCATCTGGTGACCGTGTCTTCATCTATACCATCTACACCCTGCTGCCTGTGCGCATGAGGGCT
GCGGTGCTCAGCGGGGTGCTTCTGTGCGCTCTCCACTTGCCATCTCTCTGCACACCAACTCCCAGGACC
AGTTTCTGCTGAAACAGCTTGTCTCCAATGTCTCATCTTCTCCTGCACCAACATTGTGGGTGTGTGCAC
TCACTACCCAGCTGAGGTCTCCAGAGACAGGCCTTCCAGGAGACCCGGGAGTGTATCCAGGCTCGGCTC
CATTCCAGCGGGAGAACCAGCAACAGGAGCGTCTCCTGCTGTCTGTCTTCCCCGTCATGTTGCCATGG
AGATGAAAGCAGACATCAACGCCAAGCAGGAGGATATGATGTTCCACAAGATCTACATCCAGAAGCATGA
CAATGTGAGCATCCTGTTTGTGACATCGAGGGCTTACCAGCCTGGCTTCCAGTGTACTGCCAAGAA
CTGGTCATGACCTCAATGAGCTCTTCCGCCGCTTTGACAAGTTGGCTGCGGAGAATCACTGTTTACGGA



TTAAGATCCTCGGGGATTGTTACTACTGCGTCTCGGGGCTGCCTGAAGCCAGAGCCGACCATGCCCACTG
 CTGCGTGGAGATGGGAATGGACATGATCGAGGCCATCTCGTTGGTCCGGGAGGTGACAGGGGTGAACGTG
 AACATGCGCGTGGGAATTCACAGCGGGAGAGTACACTGCGGTGTCTTGGTCTCAGAAAAGTGGCAATTCG
 ACGTGTGGTCTAACGATGTCCTCTGGCCAACCACATGGAAGCTGGTGGCAAGGCGGGCCGCATCCACAT
 CACCAAGGCCACACTCACTACCTGAATGGGGACTATGAGGTGGAACCAGGCTGTGGTGGCGATCGCAAT
 GCCTACCTCAAGGAGCACAGCATTGAGACCTTCCTCATCTGAGCTGTACCCAGAAGCGGAAAAGAAGAGA
 AGGCCATGATCGCCAAGATGAACCGCCAGAGAACCACTCCATCGGACACAATCCGCCTCACTGGGGAGC
 CGAGCGCCCTTCTACAACCACTTGGCGGCAACCAGGTGTCAAAGGAGATGAAGAGGATGGGCTTTGAG
 GACCCCAAGGACAAGAATGCCAGGAAAGTGCGAACCCAGAGGATGAAGTGGACGAGTTTCTGGTCCGG
 CCATCGATGCCAGGAGCATCGACAGACTGCGATCTGAACACGTCCGCAAGTTCCTCTGACCTTCAGGGA
 GCCCGACTTAGAGAAGAAGTACTCCAAGCAGGTGGATGACCGATTTGGTGCCTATGTGGCCTGCGCCTCG
 CTTGTTTTCTCTTCTGCTTTGTCCAGATCACCATTGTGCCCACTCCCTGTTTCTGCTGAGTTTCT
 ACCTGTCGTGTTTCTGCTGCTGGCCTTGGTGGTGTGTGTCTGTGATCTATGCCTGTGTGAAGCTTTT
 CCCCCTCCCTGCAGACACTCTCCAGGAAGATAGTGGATCCAAGAAGAACAGCACCCCTGGTCGGGGTA
 TTCACCATCACCTGGTGTCTCTCGGCTTTTGTCAACATGTTTCTGCAACTCTAAGAACCTGGTGG
 GCTGCCTGGCAGAGGAGCACAAATCACGGTGAACCAGGTCAACGCATGTCATGTGATGGAGTCGGCCTT
 CAACTACAGCCTGGGCGACGAGCAGGGCTTCTGTGGCAGCCCCAGCCCAACTGCAACTTCCCAGAGTAC
 TTCACCTACAGCGTGTGCTCAGCCTGCTGGCCTGCTCCGTGTTTCTGCGATCAGCTGCATTGAAAAGC
 TGGTGTCTATGCTGGCCATTGAGTTCATCTATGTGCTCATCGTGGAGGTGCCCGCGTCACACTCTTCGA
 CAACGCTGACCTTCTGGTCACCGCAATGCCATAGACTTCAGCAACAACGGGACCTCCCAGTGCCTGAG
 CATGCAACCAAGGTGGCGTGAAGGTGGTGACGCCCATCATCTCTGTCTTCGTGCTGGCTCTGTATC
 TGATGCCCAGCAGGTGGAGTCCACTGCTCGCCTTGACTTCTCTGAAAACCTGCAGGCCACAGAAGAGAA
 GGAGGAGATGGAGGAGCTGCAGGCCTACAATCGGCGCCTGCTGCACAACATTCTGCCAAGGACGTGGCT
 GCCCACTTCTGGCCCGGGAACGGCGCAATGACGAGCTGTACTACCAATCGTGCAGGTGTGTGGCTGTCA
 TGTTTTGCCTCCATTGCCAACTTCTCCGAATTCTATGTAGAGCTAGAGGCCAACAATGAGGGCGTCGAGTG
 CCTACGGTGTCAATGAGATCATCGCAGACTTCGATGAGATCATCAGTGAGGATCGGTTTCCAGGCAGCTG
 GAAAAGATCAAGACCATAGGCAGCACCTACATGGCTGCCTCTGGCCTCAACGACTCCACCTATGACAAGG
 CAGGCAAGACCCACATCAAGGCTATTGCAGACTTCGCTATGAAGCTGATGGACCAATGAAGTACATCAA
 TGAGCACTCCTTCAACAACCTCCAGATGAAGATTGGGCTCAACATTGGACCTGTAGTGGCTGGAGTCATT
 GGGGCTCGAAGCCTCAGTATGACATCTGGGGCAATACAGTGAATGTGGCCAGCCGTATGGACAGCACTG
 GGGTGCCTGACCGCATCCAGGTTACTACAGATATGTACCAGGTGCTGGCCGCCAACACATACCAGCTGGA
 GTGCCGGGGTGTGGTCAAGGTCAAGGCAAGGGTGAGATGATGACTTACTTCTCAATGGAGGGCCTCCC
 CTCAGT

ACGCGTACGCGGCCGCTCGAG - GFP Tag - GTTTAA

Protein Sequence: >MG225278 representing NM_001012765
Red=Cloning site Green=Tags(s)

```

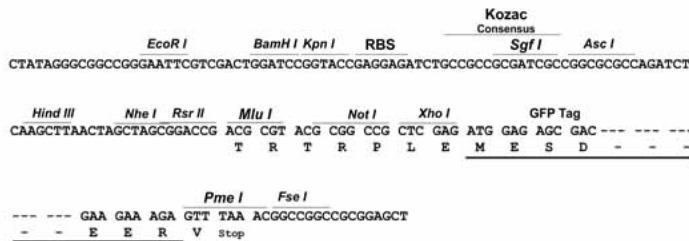
MSGSKSVSPPGYAAQTAASPAPRGGPEHRAAWGEADSRANGYPHAPGGSTRGSTRKSGGAVTPQQQRLA
SRWRGDDDDPPLSGDDPLAGGF SFRSKSAWQERGGDDGGRSRRQRGAAGGGSTRAPPAGGSGSS
AAAAAAGGTEVPRPSVELGLEERRGKGRAAELEPGTGIVEDGDGSEDGGSSVASGSGTGAVLSL GACC
LALLQIFRSKKFP SDKLERLYQRYFFRLNQSSLTMLMAVLVLVCLVMLAFHAARPPLQIAYLAVLAAAVG
VILIMAVLCNRAAFHQDHMGLACYALIAVVLAVQVVGLLLPQPRSASEGIWWTVFFIYTIYTLPLVPMRA
AVLSGVLSSALHLAISLHTNSQDQFLKQLVSNVLI F SCTNIVGVCTHYPAEVSQRQAFQETRECIQARL
HSQRENQQQERLLSVLPRHVAMEMKADINAKQEDMMFHKIYIQKHDNVSILFADIEGFTSLASQCTAQE
LVMTLNELFARFDKLAENHCLRIKILGDCYYCVSGLPEARADHAHCCVEMGMDMIEAISLVREVTGVNV
NMRVGIHSGRVHCGVLGLRKWQFDVWSNDVTLANHMEAGGKAGRIHITKATLNYLNGDYEV EPGCGGDRN
AYLKEHSIETFLILSCTQKRKEEKAMIAKMNQRTNSIGHNPPHWGAERPFYNHLGGNQVSKEMKRMGFE
DPKDKNQESANPEDEVDFLGRAIDARSIDRLRSEHVRFLLTFREPDLKYSKQVDDRF GAYVACAS
LVFLFICFVQITIVPHSLFMLS FYLSCFLLLALVVFVSVIYACVKLFPTPLQTL SRKIVRSKKNSTLVGV
FTITLVFLSAFVNMFCNSKNLVGCLAEHNITVNQVNACHVMESAFNYSLGDEQGF CGSPQPCNFPEY
FTYSVLLSLLACSVFLQISCI GKLVLMLAIEFIYVLIVEVPGVTLFDNADLLVTANAIDFSNNGTSQCP E
HATKVALKVVTPIIISVFLALYLHAQQVESTARLDFLWKLQATEEKEEMEELQAYNRRLLHNILPKDVA
AHFLARERRNDELYYQSCCEVAVMFASIANFSEFYVELEANNEGVECLRLLEI IADDFDEIISED RFRQL
EKIKTIGSTYMAASGLNDSTYDKAGKTHIKA IADFAMKLMQMKYINEHSFNFMKIGL NIGPVVAGVI
GARKPQYDIWGN TVNASRMDSTGVPDRIQVTTDMYQVLAANTYQLECRGVVVKGKGEMMTYFLNGGPP
LS
    
```

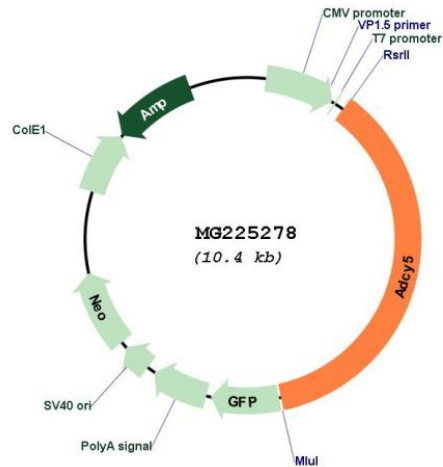
TRTRPLE - GFP Tag - V

Restriction Sites: RsrII-MluI

Cloning Scheme:

Cloning sites used for ORF Shuttling:



Plasmid Map:


ACCN: NM_001012765

ORF Size: 3786 bp

OTI Disclaimer: The molecular sequence of this clone aligns with the gene accession number as a point of reference only. However, individual transcript sequences of the same gene can differ through naturally occurring variations (e.g. polymorphisms), each with its own valid existence. This clone is substantially in agreement with the reference, but a complete review of all prevailing variants is recommended prior to use. [More info](#)

OTI Annotation: This clone was engineered to express the complete ORF with an expression tag. Expression varies depending on the nature of the gene.

Components: The ORF clone is ion-exchange column purified and shipped in a 2D barcoded Matrix tube containing 10ug of transfection-ready, dried plasmid DNA (reconstitute with 100 ul of water).

Reconstitution Method:

1. Centrifuge at 5,000xg for 5min.
2. Carefully open the tube and add 100ul of sterile water to dissolve the DNA.
3. Close the tube and incubate for 10 minutes at room temperature.
4. Briefly vortex the tube and then do a quick spin (less than 5000xg) to concentrate the liquid at the bottom.
5. Store the suspended plasmid at -20°C. The DNA is stable for at least one year from date of shipping when stored at -20°C.

RefSeq: [NM_001012765.5](#)

RefSeq Size: 5060 bp

RefSeq ORF: 3789 bp

Locus ID: 224129

UniProt ID: [P84309](#)

Cytogenetics: 16 B3

Gene Summary: Catalyzes the formation of the signaling molecule cAMP in response to G-protein signaling. Mediates signaling downstream of ADRB1. Regulates the increase of free cytosolic Ca(2+) in response to increased blood glucose levels and contributes to the regulation of Ca(2+)-dependent insulin secretion.[UniProtKB/Swiss-Prot Function]