

Product datasheet for **MG225268**

Fcgr1 (NM_010186) Mouse Tagged ORF Clone

Product data:

Product Type:	Expression Plasmids
Product Name:	Fcgr1 (NM_010186) Mouse Tagged ORF Clone
Tag:	TurboGFP
Symbol:	Fcgr1
Synonyms:	AI323638; AV092959; CD64; FcgammaRI; IGGHAFC
Mammalian Cell Selection:	Neomycin
Vector:	pCMV6-AC-GFP (PS100010)
E. coli Selection:	Ampicillin (100 ug/mL)
ORF Nucleotide Sequence:	>MG225268 representing NM_010186 Red=Cloning site Blue=ORF Green=Tags(s)

TTTTGTATACGACTCACTATAGGGCGGCCGGAATTCGTCGACTGGATCCGGTACCGAGGAGATCTGCC
 GCC**CGATCGCC**

ATGATTCTTACCAGCTTTGGAGATGACATGTGGCTTCTAACAACCTCTGCTACTTTGGGTTCCAGTCGGTG
 GGGAAAGTGGTTAATGCCACCAAGGCTGTGATCACCTTGCAGCCTCCATGGGTGAGTATTTCCAGAAGGA
 AAATGTCACCTTTATGGTGTGAGGGGCTCACCTGCCTGGAGACAGTTCCACACAATGGTTTATCAACGGA
 ACAGCCGTTTCTCAGATCTCCACGCCTAGTTATAGCATCCAGAGGCCAGTTTTCAGGACAGTGGCGAATACA
 GGTGTCAGATAGGTTCTCAATGCCAAGTGACCCTGTGCAGTTGCAAATCCACAATGATTGGCTGCTACT
 CCAGGCCCTCCCGCAGAGTCTCAGAGAAGGAGAACCCCTGGCCTTGAGGTGTACGGATGGAAGAATAAA
 CTGGTGTACAATGTGGTTTTCTATAGAAATGGAATCCTTTCAGTTTTCTTCAGATTCCGAGGTCGCCA
 TTCTGAAAACCAACCTGAGTCACAGCGGCATCTACCACTGCTCAGGCACGGGAAGACACCGCTACACATC
 TGCAGGAGTGTCCATCACGGTGAAAGAGCTGTTTACCACGCCAGTGTGAGAGCATCCGTGTCTATCTCC
 TTCCCGGAGGGGAGTCTGGTCACCCTGAAGTGTGAGACGAATTTGCTCCTGCAGAGACCCGGCTTACAGC
 TTCCTTCTCCTTCTACGTGGGCAGCAAGATCCTGGAGTACAGGAACACATCCTCAGAGTACCATATAGC
 AAGGGCGGAAAGAGAAGATGCTGGATTCTACTGGTGTGAGGTAGCCACGGAGGACAGCAGTGTCTTAAG
 CGCAGCCCTGAGTTGGAGCTCCAAGTCTTGGTCCCCAGTCATCAGCTCCTGTCTGGTTTCATCCTGTG
 TTTATCTGTGAGTGGGAATAATGTTTTCTGTTGAACACGGTTCTCTATGTGAAAATACACAGGCTGCAGAG
 AGAGAAGAAATACAACCTAGAAGTCCCTTTGGTTTCTGAGCAGGGAAGAAAGCAATTCCTTTACGCAA
 GTTAGAAGCGATGGCGTGTATGAAGAAGTAACAGCCACTGCGAGCCAGACCACACCAAAAGAAGCGCCCG
 ATGGACCTCGAAGCTCAGTGGGTGACTGTGACCCGAGCAGCCTGAACCCCTTCTCCAGTGACAGTAC
 TGGGACACAACTTCCCAAAGT

ACGCGTACGCGGCCGCTCGAG - GFP Tag - GTTTAA


[View online »](#)

Protein Sequence: >MG225268 representing NM_010186
 Red=Cloning site Green=Tags(s)

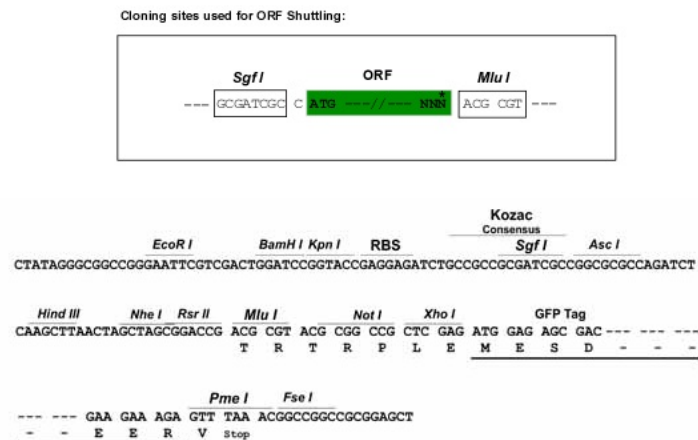
MILTSFGDDMWLLTLLLVVPVGGEVVNATKAVITLQPPWVSIFQKENVTWCEGPHLPGDSSTQWFING
 TAVQISTPSYSIPEASFQDSGEYRCQIGSSMPSPVQLQIHNDWLLQASRRVLTEGEPLALRCHGWKNK
 LVYNNVFYRNKGSFQFSSDSEVAILKTNLSHSGIYHCSGTGRHRYTSAGVSITVKELFTTPVLRASVSSP
 FPEGSLVTLCETNLLQRPGLQLHFSFYVGSKILEYRNTSSEYHIAEREDAGFYWCEVATEDSSVLK
 RSPELELQVLGPQSSAPVWFHILFYLSVGIMFSLNTVLVYKIHRLQREKKYNLEVPLVSEQGKKANSFQQ
 VRSDGVYEEVTATASQTTPKEAPDGPRSSVGDGPEQPEPLPPSDSTGAQTSQS

TRTRPLE - GFP Tag - V

Chromatograms: https://cdn.origene.com/chromatograms/ja2173_a08.zip

Restriction Sites: SgfI-MluI

Cloning Scheme:



ACCN: NM_010186

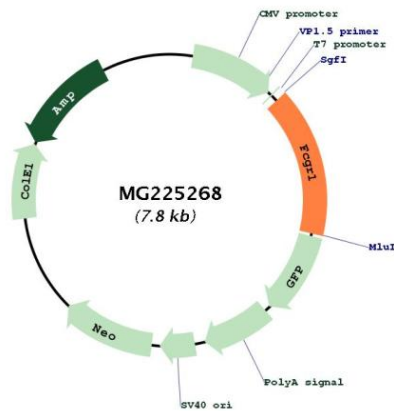
ORF Size: 1212 bp

OTI Disclaimer: Due to the inherent nature of this plasmid, standard methods to replicate additional amounts of DNA in E. coli are highly likely to result in mutations and/or rearrangements. Therefore, OriGene does not guarantee the capability to replicate this plasmid DNA. Additional amounts of DNA can be purchased from OriGene with batch-specific, full-sequence verification at a reduced cost. Please contact our customer care team at custsupport@origene.com or by calling 301.340.3188 option 3 for pricing and delivery.

The molecular sequence of this clone aligns with the gene accession number as a point of reference only. However, individual transcript sequences of the same gene can differ through naturally occurring variations (e.g. polymorphisms), each with its own valid existence. This clone is substantially in agreement with the reference, but a complete review of all prevailing variants is recommended prior to use. [More info](#)

OTI Annotation:	This clone was engineered to express the complete ORF with an expression tag. Expression varies depending on the nature of the gene.
Components:	The ORF clone is ion-exchange column purified and shipped in a 2D barcoded Matrix tube containing 10ug of transfection-ready, dried plasmid DNA (reconstitute with 100 ul of water).
Reconstitution Method:	<ol style="list-style-type: none"> 1. Centrifuge at 5,000xg for 5min. 2. Carefully open the tube and add 100ul of sterile water to dissolve the DNA. 3. Close the tube and incubate for 10 minutes at room temperature. 4. Briefly vortex the tube and then do a quick spin (less than 5000xg) to concentrate the liquid at the bottom. 5. Store the suspended plasmid at -20°C. The DNA is stable for at least one year from date of shipping when stored at -20°C.
RefSeq:	NM_010186.5 , NP_034316.1
RefSeq Size:	2589 bp
RefSeq ORF:	1215 bp
Locus ID:	14129
UniProt ID:	P26151
Cytogenetics:	3 41.72 cM
Gene Summary:	High affinity receptor for the Fc region of immunoglobulins gamma. Functions in both innate and adaptive immune responses.[UniProtKB/Swiss-Prot Function]

Product images:



Circular map for MG225268