

Product datasheet for **MG225258**

Chrm3 (NM_033269) Mouse Tagged ORF Clone

Product data:

Product Type:	Expression Plasmids
Product Name:	Chrm3 (NM_033269) Mouse Tagged ORF Clone
Tag:	TurboGFP
Symbol:	Chrm3
Synonyms:	Chrm-3; M3; M3R
Mammalian Cell Selection:	Neomycin
Vector:	pCMV6-AC-GFP (PS100010)
E. coli Selection:	Ampicillin (100 ug/mL)



[View online »](#)

ORF Nucleotide Sequence:

>MG225258 representing NM_033269
 Red=Cloning site Blue=ORF Green=Tags(s)

GACGTTGTATACGACTCCTATAGGGCGGCCGGAATTCGTCGACTGGATCCGGTACCGAGGAGATCTGCC
 GCCGGCGCGCCC

ATGACCTTGCACAGTAACAGTACAACCTCGCCTTTGTTTCCCAACATCAGCTCTTCTGGGTGCACAGTC
 CCTCAGAGGCGGGCTGCCCTTGGGACAGTCTCTCAATTGGACAGCTACAACATTTCCCAAACCTCTGG
 GAATTTCTCCTCAAATGACACCTCCAGTGACCCTTAGGGGGCCACACCATCTGGCAAGTGGTCTTCATT
 GCATTCTTGACTGGCTTCTGGCATTGGTGACCATCATCGGCAACATCCTTGTCATTGTGGCATTAAAGG
 TCAACAAACAGCTGAAGACAGTCAACAACACTTCTCTTAAGCCTGGCCTGCGCAGATCTGATCATCGG
 GGTCAATTTCCATGAACCTGTTTACGACCTACATCATTATGAACCGCTGGGCTCTGGGGAACCTAGCCTGT
 GACCTCTGGCTTCCATTGACTATGTGGCCAGCAATGCTTCTGTCATGAATCTGCTGGTGATCAGCTTTG
 ACAGGTACTTTTCTATTACCAGGCCACTCACTACCGAGCCAAACGAACAACAAAACGAGCCGGTGTGAT
 GATTGGTCTGGCTTGGGTCACTCTCTTTGTCTGTGGGCTCCTGCCATCTTGTCTGGCAACTTTTGTG
 GGAAGAGAAGTGTGCCCGGAGAATGTTTCATTTCAGTTTCTAAGTGAGCCCACCATCACCTTCGGCA
 CGCGATCGCTGCCTTTTACATGCCTGTACCATCATGACTATTTTATACTGGAGAATCTATAAGGAGAC
 TGAGAAACGTACCAAAGAGCTGGCTGGGCTACAGGCCTCTGGGACAGAAGCGGAAGCAGAAAACCTTGTG
 CACCCACAGGCAGTTCTCGAAGCTGTAGCAGCTATGAGCTACAACAGCAAGGCACGAAACGGTCATCTA
 GGAGGAAGTATGGTGGCTGTCACTTCTGGTTTCAACTAAGAGCTGGAAGCCAGTGCTGAGCAGATGGA
 CCAAGACCACAGTAGCAGTGACAGTTGGAATAACAACGATGCTGCTGCCTCCCTGGAAAACCTGCTTCT
 TCTGATGAAGAGGATATTGGCTCAGAGACCAGACCATCTATTCCATTGTACTCAAGCTGCCGGGTGATA
 GCACCATCTCAACTCTACCAAGCTACCTCCTCAGATAACCTGCAGGTGCCAGACAAGGCCTGGGAC
 TATGGATGTAGAGAGAAAATGCCATAAGCTTTCAGGCCAGAAAGATATGGATGACCGTGACAACCTGTCAG
 AAGGACTTCTCCAAGCTCCCATCCAGTTAGAGTCTGCCGTGGACACAGCCAAGACCTCTGACACCAACT
 CCTCGGTGGACAAGACCAGGCCGCTCTACCTCTGTCCTTCAAAGAAGCCACGCTGGCTAAGAGGTTTGC
 TCTCAAGACCAGAAGTCAGATCACCAAGCGGAAAAGGATGTGCTCATCAAGGAGAAGAAGGCCGCCAG
 ACACTCAGTGCCATCTTGTGGCTTTCATCATCACGTGGACCCCTACAACATCATGGTCTGGTGAACA
 CCTTCTGTGACAGCTGCATACCCAAAACCTATTGGAATCTGGGCTACTGGCTGTGCTATATCAACAGCAC
 CGTGAACCCCGTGTGCTATGCCCTGTGCAACAAGACATTCAGAACCACCTCAAGATGCTTCTTATGC
 CAGTGTGACAAGAGGAAGCGGCCAAACAGCAGTACCAGCAGAGACAGTCCGTCATTTTTACAAGCGAG
 TGCTGAGCAGGCTTG

ACGCGTACGCGGCCGCTCGAG – GFP Tag – GTTTAA

Protein Sequence:

>MG225258 representing NM_033269
 Red=Cloning site Green=Tags(s)

MTLHSNSTTSPLFPNIISSVHSPSEAGLPLGTVSQLDSYNISQTSGNFSSNDTSSDPLGGHTIWQVFI
 AFLTGFLALVTIIGNILVIVAFKVNKQLKTVNNYFLLSLACADLIIGVISMNLFITYIIMNRWALGNLAC
 DLWLSIDYVASNASVMNLLVISFDYFSITRPLTYRAKRTTKRAGVMIGLAWVISFVLWAPAILFWQYFV
 GKRTVPPGECFIQFLSEPTITFGTAIAAFYMPVTIMTILYWRIYKETEKRTELQASGTEAEAEENFV
 HPTGSSRSCSSYELQQQGTKRSSRRKYGGCHFWF TTKSWKPSAEQMDQDHSSSDSWNNNDAAAASLENSAS
 SDEEDIGSETRAIYSIVLKLPGHSTILNSTKLPSNDLQVPDKDLGMDVERNAHKLQAQKSMDDRDNCQ
 KDFSKLPIQLESVDTAKTSDTNSSVDKTTAALPLSFKEATLAKRFALKTRSQITKRKRMSLIKEKAAQ
 TLSAILLAFIITWTPYNIIMVLVNTFCDSICPKTYWNLGYWLCYINSTVNPVCYALCNKTRFTTFKMLLLC
 QCDKRKRKQYQQRQSVIFHKRVPEQAL

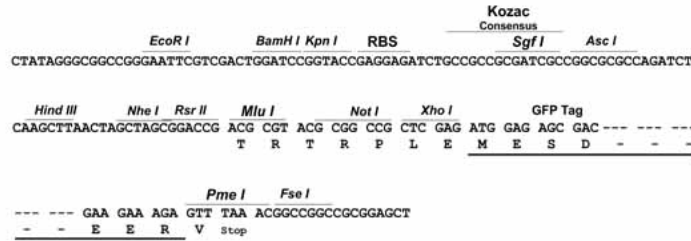
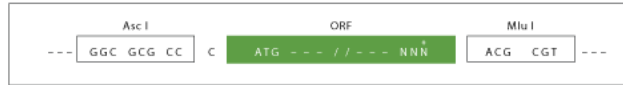
TRTRPLE – GFP Tag – V

Restriction Sites:

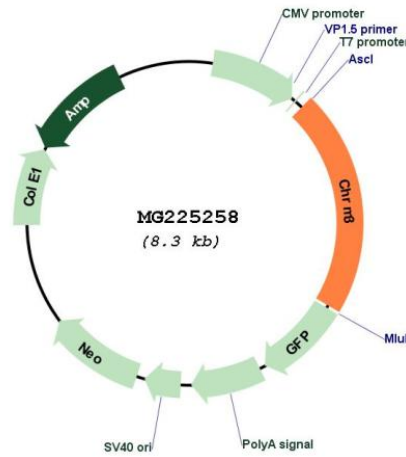
Ascl-MluI

Cloning Scheme:

Cloning sites used for ORF Shuttling:



Plasmid Map:



ACCN: NM_033269

ORF Size: 1767 bp

OTI Disclaimer:	<p>Due to the inherent nature of this plasmid, standard methods to replicate additional amounts of DNA in E. coli are highly likely to result in mutations and/or rearrangements. Therefore, OriGene does not guarantee the capability to replicate this plasmid DNA. Additional amounts of DNA can be purchased from OriGene with batch-specific, full-sequence verification at a reduced cost. Please contact our customer care team at custsupport@origene.com or by calling 301.340.3188 option 3 for pricing and delivery.</p> <p>The molecular sequence of this clone aligns with the gene accession number as a point of reference only. However, individual transcript sequences of the same gene can differ through naturally occurring variations (e.g. polymorphisms), each with its own valid existence. This clone is substantially in agreement with the reference, but a complete review of all prevailing variants is recommended prior to use. More info</p>
OTI Annotation:	This clone was engineered to express the complete ORF with an expression tag. Expression varies depending on the nature of the gene.
Components:	The ORF clone is ion-exchange column purified and shipped in a 2D barcoded Matrix tube containing 10ug of transfection-ready, dried plasmid DNA (reconstitute with 100 ul of water).
Reconstitution Method:	<ol style="list-style-type: none"> 1. Centrifuge at 5,000xg for 5min. 2. Carefully open the tube and add 100ul of sterile water to dissolve the DNA. 3. Close the tube and incubate for 10 minutes at room temperature. 4. Briefly vortex the tube and then do a quick spin (less than 5000xg) to concentrate the liquid at the bottom. 5. Store the suspended plasmid at -20°C. The DNA is stable for at least one year from date of shipping when stored at -20°C.
RefSeq:	NM_033269.4 , NP_150372.1
RefSeq Size:	3168 bp
RefSeq ORF:	1770 bp
Locus ID:	12671
UniProt ID:	Q9ERZ3
Cytogenetics:	13 3.72 cM
Gene Summary:	The muscarinic acetylcholine receptor mediates various cellular responses, including inhibition of adenylate cyclase, breakdown of phosphoinositides and modulation of potassium channels through the action of G proteins. Primary transducing effect is Pi turnover.[UniProtKB/Swiss-Prot Function]