

Product datasheet for **MG225248**

Cdc45 (NM_001161623) Mouse Tagged ORF Clone

Product data:

Product Type:	Expression Plasmids
Product Name:	Cdc45 (NM_001161623) Mouse Tagged ORF Clone
Tag:	TurboGFP
Symbol:	Cdc45
Synonyms:	Cdc45l
Mammalian Cell Selection:	Neomycin
Vector:	pCMV6-AC-GFP (PS100010)
E. coli Selection:	Ampicillin (100 ug/mL)



[View online »](#)

ORF Nucleotide Sequence:

>MG225248 representing NM_001161623
 Red=Cloning site Blue=ORF Green=Tags(s)

TTTTGTAATACGACTCACTATAGGGCGGCCGGAATTCGTCGACTGGATCCGGTACCGAGGAGATCTGCC
 GCC**CGCATCGCC**

ATGTTCTGTGACCGATTTCCGCAAGGAGTCTACGAGACGGTCCACAACCAGAGGGTCTTCTCTTTGTGG
 CCTCGGACGTGGATGCCTTGTGTGCTTGAAGATCCTCCAGGCCCTGTTTCAGTGTGACCACGTCCAGTA
 TACGCTGGTCCGGTTTCTGGGTGGCAAGAACTTGAAACTGCATATCTTGAACATAAAGAGCAGATCAAA
 TTGCTTATTAACAAGAGGATGACCTTGAGGTTCTGCCTACGACGACATCTTTAGAGATGAAGCAGAGG
 ATGAAGATCTTTAGACAGTACGGTGTGGGTGACAGCCTTCAGAGAAGCGCACACGGTTAGAAGAGGA
 GATAGTGGAGCGAAACAGGAAGAGGAGGCAGCGAGGGAGTGGGAGGCCCGAAGGAAAGACATCCTCTTT
 GACTACGACGATGAATATTATGGGACATCGTCGGCCATGGTGTGTTTACCTGGCGTGGATGATGT
 CCAAGGACCTGAATGACATGCTGTGGTGGCCATTGTTGGACTGACAGACCAGTGGGTGCATGACAAGAT
 CACTCAAATGAAGTACGTGACTGATGTTGGCATCTGCAGCGTCAATGTGTCCCGTCATAACCACCGAAAC
 GAGGCGGAGGAGAATGCTCTCTGTAGACTGCACCCGGATCTCCTTCGAGTATGACCTCTGCCTGGTAC
 TGTATCAGCACTGGTCCCTCCATGAAAGCCTGTACAACACCAGCTACACAGCAGCCAGGTTTAAAGCTCTG
 GTCTGTGCATGGGCAGAAACGACTCCAGGAGTTCCTTGCAGACATGGGGCTTCCCCTGAAGCAAGTCAAG
 CAGAAATTTAGTCCATGGACGTTTCTTGAAGGGGAATCTGCGAGAAATGATTGAAGAATCTGCAATA
 AATTTGGGATGAAGGACATGCGTGTACAGACTTTCAGCATTACAGTTTGGGTTCAAGCATAAATTCCTGGC
 CAGTGTGTCGCTTTGCCACCATGTCTAATGGAGAGTCTGAGAAGGATGGCTCAGGGACAGACCAC
 TTCATCCAGGCTCTCGATAGCCTCTCCAGGAGTAACTGGACAAGCTATACTTGGTCTAGAGCTCGCCA
 AGAAGCACCTCCAAGCCACACAACAGACCATCGCCAGTGTCTCTGTACCAACCTCGTCACTTCCAGGG
 CCCTTTTCTCTACTGCTCACTCATGGAGGGCACTCCAGATGTACCCCTGTTTTCCAAGCCAGCATCCTTG
 AGTCTGCTCAGCAGACATCTGCTCAAGTCTTTGTGACTCGACAAGAATCGACGATGCAAGCTGCTGC
 CCCTGGTGTGGTGCCTCGCTGAGCGTGAACAGGGCACAGTACCCTGGTGGGCATCCCCCAGAGAC
 TGATAGCTCGGATAGAAAGAATTTTTGGTGGGCTTTTGAAGAAGCAGCAGAAAGCACCAGCTCTCGG
 ACTCTACACAATTACTTTGACCTCTCAGTAATTGAGCTGAAGGCTGAGGACCGGAGCAAGTTCCTGGACG
 CTCTTGTGCTACTGCTGTCC

ACGCGTACGCGGCCGCTCGAG - GFP Tag - GTTTAA

Protein Sequence:

>MG225248 representing NM_001161623
 Red=Cloning site Green=Tags(s)

MFVTDFRKEFYETVHNQRVLLFVASDVALCACKILQALFQCDHVQYTLVPVSGWQELETAYLEHKEQIK
 LLIKQEDDLEVPAYDDIFRDEAEDELDSDSDGDGSEPESEKTRLEEEIVERNRRQRREWEARRKDILF
 DYEQYEEYGTSSAMVMFDLAWMMSKDLNDMLWWAIVGLTDQWVHDKITQMKYVTDVIGILQRHVS RHNHRN
 EAEENMLSVDCTRISFEYDLCLVLYQHWSLHESLYNTSYTAARFKLWSVHGQKRLQEF LADMGLPLKQVK
 QKFQSMQVSLKGNLREMIIESANKFGMKDMRVQTF SIQFQFKHKLASDVVFATMSLMESPEKDGSGTDH
 FIQALDSLRSNLDKLYLGLLELAKKHLQATQQTIASCLCTNLVTSQGPFLYCSLMEGTPDVTLFSKPASL
 SLLSRHLLKSFVYSTKNRRCKLLPLVMAAPL SVEQGTVTVVGIPPETDSSDRKNFFGRAFEKAAESTSSR
 TLHNYFDLSVIELKAEDRSKFLDALVSLLS

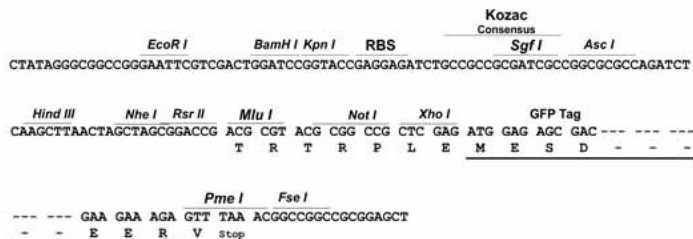
TRTRPLE - GFP Tag - V

Restriction Sites:

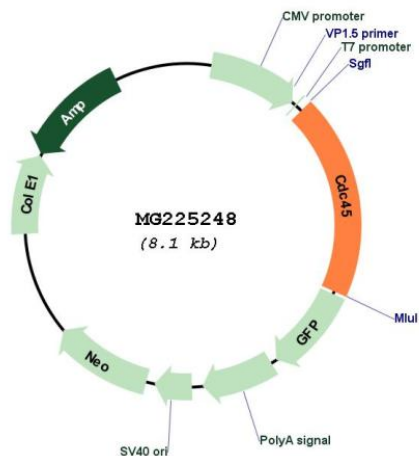
Sgfl-MluI

Cloning Scheme:

Cloning sites used for ORF Shutting:



Plasmid Map:



ACCN:	NM_001161623
ORF Size:	1560 bp
OTI Disclaimer:	The molecular sequence of this clone aligns with the gene accession number as a point of reference only. However, individual transcript sequences of the same gene can differ through naturally occurring variations (e.g. polymorphisms), each with its own valid existence. This clone is substantially in agreement with the reference, but a complete review of all prevailing variants is recommended prior to use. More info
OTI Annotation:	This clone was engineered to express the complete ORF with an expression tag. Expression varies depending on the nature of the gene.
Components:	The ORF clone is ion-exchange column purified and shipped in a 2D barcoded Matrix tube containing 10ug of transfection-ready, dried plasmid DNA (reconstitute with 100 ul of water).
Reconstitution Method:	<ol style="list-style-type: none">1. Centrifuge at 5,000xg for 5min.2. Carefully open the tube and add 100ul of sterile water to dissolve the DNA.3. Close the tube and incubate for 10 minutes at room temperature.4. Briefly vortex the tube and then do a quick spin (less than 5000xg) to concentrate the liquid at the bottom.5. Store the suspended plasmid at -20°C. The DNA is stable for at least one year from date of shipping when stored at -20°C.
RefSeq:	NM_001161623.2
RefSeq Size:	1784 bp
RefSeq ORF:	1563 bp
Locus ID:	12544
Cytogenetics:	16 11.63 cM
Gene Summary:	Required for initiation of chromosomal DNA replication.[UniProtKB/Swiss-Prot Function]