

Product datasheet for **MG225230**

Dlc1 (NM_001194941) Mouse Tagged ORF Clone

Product data:

Product Type:	Expression Plasmids
Product Name:	Dlc1 (NM_001194941) Mouse Tagged ORF Clone
Tag:	TurboGFP
Symbol:	Dlc1
Synonyms:	A730069N07Rik; Arhgap7; dlc-1; HP; STARD12
Mammalian Cell Selection:	Neomycin
Vector:	pCMV6-AC-GFP (PS100010)
E. coli Selection:	Ampicillin (100 ug/mL)
ORF Nucleotide Sequence:	>MG225230 representing NM_001194941 Red=Cloning site Blue=ORF Green=Tags(s)

TTTTGTAATACGACTCACTATAGGGCGGCCGGAATTCGTCGACTGGATCCGGTACCGAGGAGATCTGCC
GCC**CGATCGCC**

ATGGGGGACCCCGAGGGCCACGTGATGGCTCGGCCCTGAGAGGCCCGCTGCGGAGGTCCTTCAGCGACC
ACATCAGAGACTCCACCGCCAGGGCGCTGGATGCTATCTGGAAAAACACCAGAGAGACGGCTAGCAGA
AATTGAAGCCAAGGAAGCTTGGCAGCTGGCTGAGAGTACTGGTTTCCCCAGTATGCACAGCTGTATGAA
GATCTACTGTTCCCTATTGATATTGCGCTGGTCAAGAGAGAACATGACTTCTGGACAGAGACGCCATCG
AGGCTCTCTGCAGGCGCTTAAATACTCTAAACAAGTGTGCAGTCATGAAGCTGGAGATCAGTCCTCACCG
GAAGCGAAGTGAGGATTCGGATGAAGATGAGCCTTGCGCCATAAGCGGCAAGTGGACTTTCAGAGGGAC
AGCAAGCGGTGGTCCCGCCTTGAAGAGTTTGACGTCTTTTCCCCAAAGCAGGATCCAATCCCTGGGTCCC
CAGACAACTCTCGTTTGCAAAGCGCCACAAGCCACGAAAGCATGCTGACAGACCTCAGCGAGCACCAGGA
GGTGGCTCTGTCCGAAGCCTCAGCAGCACCAGCAGCAGCGTCCCCACCCACGCAGCCCACAGTGGAGAT
GCCACTACGCCCCGAACCAATCCGTATCAGCGTCTGCTCCTCCGACACTTTGTAGGCAATGATGACT
CTTTTCCAGCCTGCCGTCTCCAAGGAAGTGTCCAGTTCAGTTTTAGCATGAAAGGCCACCACGAGAA
GAACACCAAGTGAAGACGCGGAGCCTGCTCAAACGCATGGAGAGCCTGAAGCTCAAGGGCTCCCACCAC
AGCAAGCACAAGGCGCCTTCCAAGCTGGGTTGATCATCAGTCTCCATTCTGCGAGGGTATGGATG
AGGCAAAGCTGAAGCAGCTGAACTGTGTGGAGATCTCAGCCCTCAATGGCAACCACATCAACGTGCCAT
GGTACGGAAAAGGAGCGTGTCTAACTCCACCCAGACCAGCAGCAGCAGCAGCAGCAGCAGCAGCAGCAGC
GCGGTGAGC
ATCTAGAGGGCTTCGACCCATTAGTCACTCCACCTTGAACAACGTGACGGAGCAGAACTATAAAAACCG
TGAGAGCTACCCAGAGGACAGGTGTTCTACATTCGGAAGATCACAGCCCGGCACCTTCCCTAAGGCC
CTCTCCATGGCAGTTTCTGTCCCTCGGAAACAGTCTGTGAACTGGAGGACCGGAAGCTTCCATGGCC
CTGGCCATCTCAGCCTACGGAGAGAAAACGCCATGACAGTCTAAGGAGCTGAAGAGACGCAATCTTCT
CAGCTCTCTGAGCAGCCGCTGAGCATCTATGATAACGTACCGGGTCTATCCTGTACTCCAGCTCGGGA



GAAGTGGCCGACCTGGAGAATGAGGACATCTCCCTGAGCTGGATGACATTCTCTACCACGTGAAGGGGA
 TGCAGCGGATAGTCAACCAGTGGTCCGAGAAGTTTTCCGACGAGGGAGACTCGGACTCAGCCCTGGACTC
 TGTCTCTCCTTGCCCGTCATCTCCAAAACAGATACACCTGGATGTGGACCATGACCGAAGGACACCCAGT
 GACCTGGACAGCACAGGCAACTCCCTCAATGAGCCCGAAGAGCCCACTGATATCCCGAAAGAAGAGACT
 CAGGGGTGGGGCTTCCCTGACCAGGTGCAATAGGCACAGACTGAGGTGGCAGACTTCCAGAGCTCCCA
 CCGGCCGAGCCTCAACTCCGTGCTACTGCAGATTAAGTCCAGTCTGTGGCCAGATGAACCTGCTGCAG
 AAATACTCGCTCCTGAAATTGACGGCCCTGCTGGAAAAGTACACGCCCTTCCAACAAGCAGCGCTTCCAGT
 GGGCTGTGCCAAGTTTCATGAAAAGGATCAAGGTTCCAGACTACAAGGACCGGAGTGTGTTGGGGTCCC
 ACTGACTGTGAACGTGCAGCGCTCAGGACAGCCCTGCCCCAGAGCATCCAGCAGCCATGCGCTACCTC
 CGTAACCACTGTCTGGACCAGGTCGGGCTCTTCCAGGAAGTCAAGTGTCAAATCCCGGATCCAGGCTCTAC
 GCCAGATGAATGAAAGCGCTGAAGATAATGTCAACTATGAAGGCCAGTCTGCTTATGATGTGGCAGACAT
 GTTAAAGCAATATTTTCGAGATCTTCTGAGCCCTCATGACGAACAACTCTCCGAAACCTTCTGAG
 ATCTACCAGTATGTTCCCAAGGACCAGCGCTCCAAGCCATCAAGGCGGCCATTATGCTCCTGCCGACG
 AGAACCAGGAGGTTCTGCAGACACTTCTCTATTTCTGAGCGATGTCACAGCGGCTGTGAAAGAAAACCA
 GATGACTCCACCAACCTGGCTGTGTGCCTAGCTCCGTCCTTCCACCTCAACACCTGAAGCGAGAG
 AATTTCTTCCAAGGTAATGCAAAGAAAACAGAGTTTGGGCAAACCAGACCAGAAAAGACCTGAATGAAA
 ACCTAGCGGCGACTCAAGGGCTGGCCACATGATTGCTGAGTGAAGAAGCTCTTCCAGGTCCTGAGGA
 AATGAGCCGGTGGCGTAACTCCTACACTGAACAAGAGCTGAAGCCCTTACCCTGGAGGCTTGGGACAC
 CTGAATAGTGACCAGCCTGCTGACTACAGACACTTCTCCAGGACTGTGTGGATGGCCTGTTAAGGAGG
 TCAAAGAGAAGTTCAAAGGCTGGGTGAGTACCCACCTCCGAACAGGCTGAGCTGTCTATAAGAAGGT
 CAGCGAAGGACCCCGTTAAGGCTTGGAGTCAACTATCGAAGTCCCGCTGCACCCGAGGAGATCTTA
 AAGCGCTTCTGAAGGAGCAACACTCTGGGATGTGGACTGCTGACTCCAAGGTGATTGAAATCCTGG
 ACAGCCAGACTGAAATCTACCAATACGTCCAAAACAGCATGGCGCCCACTGCGCGGACTACGTCGT
 ATTTGAGGACTGGAGACTAACTTACCCAGGGGGCTGTGCTCTTACTCACCTCTGTGGATCACGAC
 CCGGCCCCCGTGGCGGGGTGAGGGTAAATGTGCTCCTGTCCAGATATTTGATTGAACCTGCGGGTTCAG
 GAAAATCCAAGCTTACCTACATGTGCAGAGCTGATTTAAGGGGCCACATGCCGGAGTGGTACTCAAATC
 TTTTGGACATTTGTGTGCAGCCGAAGTGGTAAAGATCCGAGACTCCTCAGTAATCAGAACACTGAAAGC
 AAGGACACGAGATCTAGG

ACGCGTACGCGGCCGCTCGAG – GFP Tag – GTTTAA

Protein Sequence:

>MG225230 representing NM_001194941
 Red=Cloning site Green=Tags(s)

MGDPEGHVMARPLRGPLRRSFDHIRDSTARALDAIWKNTREERRLAIEAEKACDWLRVTGFPQYAQLYE
 DLLFPIDIALVKREHDFLDRDAIEALCRLNLTNLCVAMKLEISPHRKRSEDSDEDEPCAISGKWFQRD
 SKRWSRLEEFDFVSPKQDPIPGSPDNSRLQSATSHESMLTDLSEHQEVASVRSLSSTSSSVPTAAHSGD
 ATTPRTNSVIVSVCSSGHFVGNDDSFSSLPSPKELSSFSSMKGHHEKNTKSKTRSLKRMESLKLKGGSHH
 SKHKAPSKLGLIISAPILQEGMDEAKLQKLNVEISALNGNHINVPMVRKRSVSNSTQTSSSSSQSETSS
 AVSTPSPVTRTRSLSTCNKRVGMYLEGFDPFSQSTLNNVTEQNYKNRESYPEDTVFYIPEDHKPGTFPKA
 LSHGSFCPSGNSSVNWRTGSFHGPGHLRLRENSHDSPELKRNRSSSSLSRSLIYDNPVGSILYSSSG
 ELADLENEDIPELDDILYHVGMQRIVNWSEKFSDEGSDSALDSVSPCSPKQIHLDVDHRRTPS
 DLDSTGNSLNEPEEPTDIPERRDSGVGASLTRCNRHRLRWHFSQSSHRPSLNSVSLQINCQSVAQMNLQ
 KYSLLKLTALLEKYTPSNKHGFSWAVPKFMKRIKVPDYKDRSVFGVPLTVNVQRSQPLPQSIQQAMRYL
 RNHCLDQVGLFRKSGVKSRIQALRQMNSAEDNVNYEGQSAYDVADMLKQYFRDLPEPLMTNKLSETFLQ
 IYQYVPKQRLQAIKAAIMLLPDENREVLQTLTYFLSDVTAAVKENQMTPTNLAVCLAPSLFHLNLTKRE
 NSSPRVMQRKQSLGKPDQKDLNENLAATQGLAHMIAECKKLFQVPEEMSRCRNSYTEQLKPLTLEALGH
 LNSDQPADYRHFLQDCVDGLFKEVKEKFGWVSYPTSEQAELSYKKVSEGPPLRLWRSTIEVPAPEEIL
 KRLLKEQHLWDVLLDSKVIIEILDSQTEIYQYVQNSMAPHPARDYVVLRTWRNLPRGACALLLTSVDHD
 RAPVAGVRVNVLLSRYLIEPCGSGKSKLTYMCRADLRGHMPEWYSKSFHGLCAAEVVKIRDSFSNQNTES
 KDTRSR

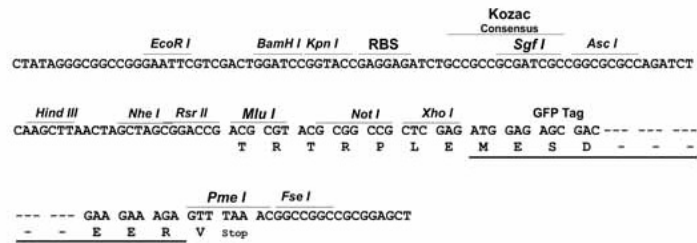
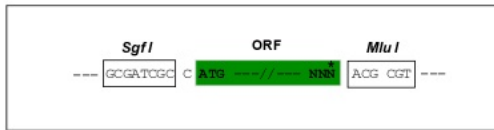
TRTRPLE – GFP Tag – V

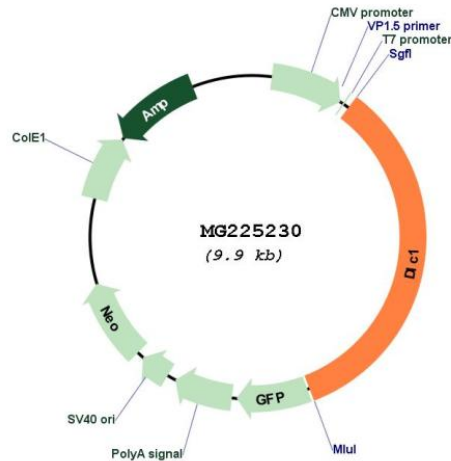
Restriction Sites:

SgfI-MluI

Cloning Scheme:

Cloning sites used for ORF Shuttling:



Plasmid Map:


ACCN: NM_001194941

ORF Size: 3378 bp

OTI Disclaimer: The molecular sequence of this clone aligns with the gene accession number as a point of reference only. However, individual transcript sequences of the same gene can differ through naturally occurring variations (e.g. polymorphisms), each with its own valid existence. This clone is substantially in agreement with the reference, but a complete review of all prevailing variants is recommended prior to use. [More info](#)

OTI Annotation: This clone was engineered to express the complete ORF with an expression tag. Expression varies depending on the nature of the gene.

Components: The ORF clone is ion-exchange column purified and shipped in a 2D barcoded Matrix tube containing 10ug of transfection-ready, dried plasmid DNA (reconstitute with 100 ul of water).

Reconstitution Method:

1. Centrifuge at 5,000xg for 5min.
2. Carefully open the tube and add 100ul of sterile water to dissolve the DNA.
3. Close the tube and incubate for 10 minutes at room temperature.
4. Briefly vortex the tube and then do a quick spin (less than 5000xg) to concentrate the liquid at the bottom.
5. Store the suspended plasmid at -20°C. The DNA is stable for at least one year from date of shipping when stored at -20°C.

RefSeq: [NM_001194941.1](#), [NP_001181870.1](#)

RefSeq Size: 6266 bp

RefSeq ORF: 3381 bp

Locus ID: 50768

UniProt ID: [Q9R0Z9](#)

Cytogenetics: 8 23.05 cM

Gene Summary:

Functions as a GTPase-activating protein for the small GTPases RHOA, RHOB, RHOC and CDC42, terminating their downstream signaling. This induces morphological changes and detachment through cytoskeletal reorganization, playing a critical role in biological processes such as cell migration and proliferation. Also functions in vivo as an activator of the phospholipase PLCD1. Active DLC1 increases cell migration velocity but reduces directionality (By similarity).[UniProtKB/Swiss-Prot Function]