

Product datasheet for **MG225228**

Dlc1 (NM_015802) Mouse Tagged ORF Clone

Product data:

Product Type: Expression Plasmids
Product Name: Dlc1 (NM_015802) Mouse Tagged ORF Clone
Tag: TurboGFP
Symbol: Dlc1
Synonyms: A730069N07Rik; Arhgap7; dlc-1; HP; STARD12
Mammalian Cell Selection: Neomycin
Vector: pCMV6-AC-GFP (PS100010)
E. coli Selection: Ampicillin (100 ug/mL)
ORF Nucleotide Sequence: >MG225228 representing NM_015802
 Red=Cloning site Blue=ORF Green=Tags(s)

TTTTGTAATACGACTCACTATAGGGCGGCCGGAATTCGTCGACTGGATCCGGTACCGAGGAGATCTGCC
 GCC**CGATCGCC**

ATGTGTAGAGACGAGCCGGACACCATGATCCTAACACAAATTGAAGCCAAGGAAGCTTGCAGCTGGCTGA
 GAGTGACTGGTTTCCCCAGTATGCACAGCTGTACGAAGATCTACTGTTCCCTGTTGATATTGCGCTGGT
 CAAGAGAGAACATGACTTCTTGGACAGAGACGCCATCGAGGCTCTCTGCAGGCGCTTAAATACTCTAAAC
 AAGTGTGCAGTCATGAAGCTGGAGATTAGTCCTCACCGGAAGCGAAGTGAGGATTCGGATGAAGATGAGC
 CTTGCGCCATAAGCGGCAAGTGGACTTTCCAGAGGGACAGCAAGCGGTGGTCCCGCCTTGAAGAGTTTGA
 CGTCTTTTTCCCAAAGCAGGATCCAATCCCTGGGTCCCCAGACAACCTCTCGTTTGCAAAGCGCCACAAGC
 CACGAAAGCATGCTGACAGACCTCAGCGAGCACCAGGAGGTGGCCTCTGTCCGAAGCCTCAGCAGACCA
 GCAGCAGCGTCCCCACCCACACAGCCCACAGTGGAGATGCCACTACGCCCCGAACCAATTCGTCATCAG
 CGTCTGCTCCTCCGGACACTTTGTAGGCAACGATGACTCTTTTTCCAGCCTGCCGTCTCCCAAGGAAGT
 TCCAGTTCAGTTTTAGCATGAAAGGCCACCACGAGAAGAACAAGTGAAGACGCGGAGCCTGCTCA
 AACGCATGGAGAGCCTGAAGCTCAAGGGCTCCACACAGCAAGCACAAGGCGCCTTCCAAGCTGGGTT
 GATCATCAGTGTCCCATTTCTGCAGGAGGTATGGATGAGGCGAAGCTGAAGCAGCTGAAGTGTGGAG
 ATCTCAGCCCTCAATGGCAACCATCAACGTGCCATGGTACGGAAAAGGAGCGTGTCTAACTCCACCC
 AGACCAGCAGCAGCAGCCAATCAGAGACCAGCAGCGGTACGACACCCAGCCCGGTCAACCAGGAC
 CCGGAGCCTCAGCACCTGTAACAAGCGGGTGGGCATGTATCTAGAGGGCTTCGACCCATTAGTCAGTCC
 ACCTTGAACAACGTGACGGAGCAGAATAAAAAACCGTGAGAGCTACCCAGAGGACACGGTGTCTTACA
 TTCCCGAAGATCACAAGCCCGCACCTTCCCTAAGGCCCTCTCCCATGGCAGTTTCTGTCCCTCGGGAAA
 CAGTTCTGTGAAGTGGAGACCGGAAGCTTCCATGGCCCCGCCATCTCAGCCTACGGAGAGAAAACAGC
 CATGACAGTCTAAGGAGCTGAAGAGACGCAATTCTCCAGCTCTCTGAGCAGCCGCTGAGCATCTATG
 ATAACGTACCGGTTCTATCCTGTACTCCAGCTCGGGAGAAGTGGCCGACCTGGAGAATGAGGACATCTT
 CCCTGAGCTGGATGACATTCTCTACCACGTGAAGGGGATGCAGCGGATAGTCAACCAGTGGTCCGAGAAG



[View online >](#)

TTTTCCGACGAGGGAGACTCGGACTCAGCCCTGGACTCTGTCTCTCCTTGCCCGTCATCTCCAAAACAGA
 TTCACCTGGATGTGGACCATGACCGAAGGACACCCAGTGACCTGGACAGCACAGGCAACTCCCTCAATGA
 GCCCGAAGAGCCCACTGATATCCCGAAAGAAGAGACTCCGGGGTGGGGGCTTCCCTGACCAGGTGCAAT
 AGGCACAGACTGAGGTGGCACAGCTTCCAGAGCTCCCACCGCCGAGCCTCAACTCCGTGTCACTGCAGA
 TTAAGTCCAGTCTGTGGCCAGATGAACCTGCTGCAGAAATACTCGCTCCTGAAATTGACGGCCCTGT
 GGAAAAGTACACGCCCTCCAACAAGCAGGCTTCCAGTGGGCTGTGCCAAGTTCATGAAAAGGATCAAG
 GTTCCAGACTACAAGGACCGGAGTGTGTTGGGTCCTCCACTGACTGTGAACGTGCAGCGCTCAGGACAGC
 CCTGCCCCAGAGCATCCAGAGGCCATGCGCTACCTCCGTAACCACTGTCTGGACCAGGTCGGGCTCTT
 CAGGAAGTCAGGTGTCAATCCCGGATCCAGGCTCTACGCCAGATGAATGAAAGCGCTGAAGATAATGTC
 AACTATGAAGGCCAGTCTGCTTATGATGTGGCAGACATGTTAAAGCAATATTTTCGAGATCTTCTGAGC
 CCCTCATGACGAACAACTCTCCGAAACCTTCTGAGATCTACCAGTATGTGCCAAGGACCAGCGCT
 CCAAGCCATCAAGGCGGCCATTATGCTCCTGCCGACGAGAACCAGGAGGTTCTGCAGACACTTCTCTAT
 TTCCTGAGCGATGCACAGCGGCTGTGAAAGAAAACCAGATGACTCCCACCAACCTGGCTGTGTGCCTAG
 CTCCTGCTCCTTCCACCTCAACACCCTGAAGCGAGAGAATTCTTCTCCAAGGTAATGCAAAGAAAACA
 GAGTTTGGGCAAACCAGACCAGAAAGACCTGAATGAAAACCTAGCGGCGACTCAAGGGCTGGCCACATG
 ATTGCTGAATGCAAGAAGCTCTTCCAGGTCCTGAGGAAATGAGCCGGTCCCGTAACTCCTACACTGAAC
 AAGAGCTGAAGCCCTTACCCTGGAGGCCCTGGGACACCTGAATAGTGACCAGCCTGCTGACTACAGACA
 CTTCCTCCAGGACTGTGTGGATGGCCTGTTAAGGAGGTCAAAGAGAAGTTCAAAGGCTGGGTGACGTAC
 CCCACCTCCGAACAGGCTGATCTGTCTATAAGAAGGTGACGGAAGACCCCGTTAAGGCTTGGAGGT
 CAACTATCGAAGTCCCGCTGCACCCGAGGAGATCTTAAAGCGCCTTCTGAAGGAGCAACACCTCTGGGA
 TGTGGACTGTGGACTCCAAGGTGATTGAAATCCTGGACAGCCAGACTGAAATCTACCAATACGTCCAA
 AACAGCATGGCGCCCCACCCTGCGCGGGACTACGTCGATTGAGGACCTGGAGGACTAACTACCCAGGG
 GGGCTGTGCTCTTACTCACCTCTGTGATCACGACCGGCGCCCGTGGCGGGGTGAGGTTAATGT
 GCTCCTGTCCAGATATTTGATTGAACCTGCGGGTCAGGAAAATCCAAGCTTACCTACATGTGCAGAGCT
 GATTTAAGGGGCCACATGCCGGAGTGGTACTCAAATCTTTTGGACATTTGTGTGCAGCCGAAGTGGTGA
 AGATCCGAGACTCCTTCAGTAATCAGAACACTGAAAGCAAGGACGAGATCTAGG

ACGCGTACGCGGCCGCTCGAG - GFP Tag - GTTTAA

Protein Sequence:

>MG225228 representing NM_015802
 Red=Cloning site Green=Tags(s)

MCRDEPDTMILTQIEAKEACDWRVTGFPQYAQLYEDLLFPVDIALVKREHDFLDRDAIEALCRRNLN
 KCAVMKLEISPHRKRSEDSDEDEPCAISGKWFQRDSKRWSRLEEFDFVFPKQDP
 IPGSPDNRSLQSATS HESMLTDLSEHQEVASVRSLSSTSSSVPTHTAHSGDATTPRTNSV
 ISVCSSGHFVGNDDSFSSLPSPKEL SSFSSMKGHHEKNTKSKTRSL
 LKRMESLKLKGSHHKHKAPSKLGLIISAPILQEGMDEAKLKQ
 LNCVE ISALNGNHINVPVVRKRSVSNSTQTSSSSSQSETSSAVSTPSPVTRTRSL
 STCNKRVGMYLEGFDPFSQS TLNNVTEQNYKNRESYPEDTVFYIPEDHKPGT
 FPKALSHGSFCPSGNSSVNWRTGSFHGPHLSLRRENS HDSPKELKRRNSSSL
 SRLSIYDNVPGSILYSSSGELADLENEDIFPELDDILYHVKGMQRIVNQWSEK
 FSDEGSDSALDSVSPCSPSPKQIHLVDVHRRTPSDLDSTGNSLNEPEEPTDIPERRDS
 VGSGLTRCN RHRLRWHSFQSSHRPSLNSVSLQINCQSV AQMNLLQKYSLLKL
 TALLEKYTPSNKHGFSWAVPKFMKRIK VPDYKDRSVFVPLTVNVQRSGQPL
 PQSIQQAMRYLRNHCLDQVGLFRKSGVKSRIQALRQMNEAEDNV NYEQSAYDVAD
 MLKQYFRDLPEPLMTNKLSETFLQIYQYVVKDQRLQAIKAAIMLLPDENREVLQ
 TLLY FLSDVTA AVKENQMTPTNLAVCLAPSLFHLNLT
 KRENSSPRVMQRKQSLGKPDQKDLNENLAATQGLAHM
 IAECKLQVPEEMSRCRNSYTEQELKPLTLEALGHLNSDQPADYRHF
 LQDCVDGLFKEVKEKFKGWVSY PTSEQADLSYKKVSEGPPLRLWRSTIEVPA
 APEEILKRLLEQHLWDVLLDSKVIIEILDSQTEIYQYVQ NSMAPHPARDYV
 VLRWRTNLPRGACALLLTSVDHVRAPVAGVRVNVLLSRYLIEPCGSGSKSLTYMCR
 A DLRGHMP EWYSKSFGLCAA EVVKIRDSFSNQNTESKDTRSR

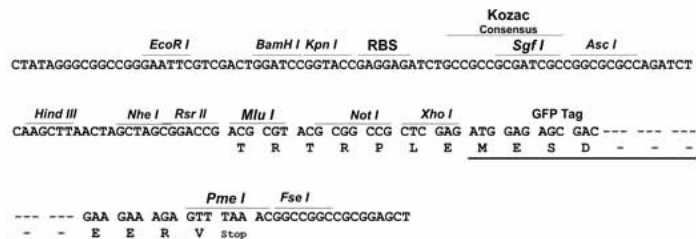
TRTRPLE - GFP Tag - V

Restriction Sites:

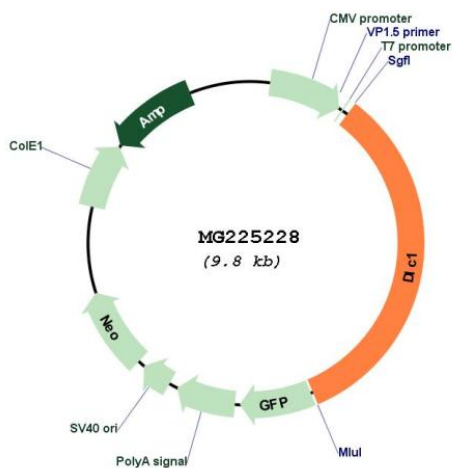
Sgfl-MluI

Cloning Scheme:

Cloning sites used for ORF Shutting:



Plasmid Map:



ACCN: NM_015802

ORF Size: 3276 bp

OTI Disclaimer:	<p>Due to the inherent nature of this plasmid, standard methods to replicate additional amounts of DNA in E. coli are highly likely to result in mutations and/or rearrangements. Therefore, OriGene does not guarantee the capability to replicate this plasmid DNA. Additional amounts of DNA can be purchased from OriGene with batch-specific, full-sequence verification at a reduced cost. Please contact our customer care team at custsupport@origene.com or by calling 301.340.3188 option 3 for pricing and delivery.</p> <p>The molecular sequence of this clone aligns with the gene accession number as a point of reference only. However, individual transcript sequences of the same gene can differ through naturally occurring variations (e.g. polymorphisms), each with its own valid existence. This clone is substantially in agreement with the reference, but a complete review of all prevailing variants is recommended prior to use. More info</p>
OTI Annotation:	<p>This clone was engineered to express the complete ORF with an expression tag. Expression varies depending on the nature of the gene.</p>
Components:	<p>The ORF clone is ion-exchange column purified and shipped in a 2D barcoded Matrix tube containing 10ug of transfection-ready, dried plasmid DNA (reconstitute with 100 ul of water).</p>
Reconstitution Method:	<ol style="list-style-type: none">1. Centrifuge at 5,000xg for 5min.2. Carefully open the tube and add 100ul of sterile water to dissolve the DNA.3. Close the tube and incubate for 10 minutes at room temperature.4. Briefly vortex the tube and then do a quick spin (less than 5000xg) to concentrate the liquid at the bottom.5. Store the suspended plasmid at -20°C. The DNA is stable for at least one year from date of shipping when stored at -20°C.
RefSeq:	<p>NM_015802.3, NP_056617.2</p>
RefSeq Size:	<p>6184 bp</p>
RefSeq ORF:	<p>3279 bp</p>
Locus ID:	<p>50768</p>
UniProt ID:	<p>Q9R0Z9</p>
Cytogenetics:	<p>8 23.05 cM</p>
Gene Summary:	<p>Functions as a GTPase-activating protein for the small GTPases RHOA, RHOB, RHOC and CDC42, terminating their downstream signaling. This induces morphological changes and detachment through cytoskeletal reorganization, playing a critical role in biological processes such as cell migration and proliferation. Also functions in vivo as an activator of the phospholipase PLCD1. Active DLC1 increases cell migration velocity but reduces directionality (By similarity).[UniProtKB/Swiss-Prot Function]</p>