

## Product datasheet for **MG225197**

### **Mtus1 (NM\_001005864) Mouse Tagged ORF Clone**

#### **Product data:**

Product Type:	Expression Plasmids
Product Name:	Mtus1 (NM_001005864) Mouse Tagged ORF Clone
Tag:	TurboGFP
Symbol:	Mtus1
Synonyms:	AI481402; ATBP135; Atip1; B430010I23Rik; B430305I03Rik; C85752; Cctsg1-440; MD44; mKIAA1288; MTSG1
Mammalian Cell Selection:	Neomycin
Vector:	pCMV6-AC-GFP (PS100010)
E. coli Selection:	Ampicillin (100 ug/mL)



[View online »](#)

**ORF Nucleotide Sequence:**

>MG225197 representing NM\_001005864  
 Red=Cloning site Blue=ORF Green=Tags(s)

TTTTGTAATACGACTCACTATAGGGCGGCCGGAATTCGTCGACTGGATCCGGTACCGAGGAGATCTGCC  
 GCC**GCGATCGCC**

ATGACTATACCAGGAGGATTTTCGCAAGTGTACAGAACTGATATTTCTTCAACGATCTTTATCAATTCTA  
 CACTCACACCCCCGGCCGCTCAGAAAGGCAGTATGATGCTACCTTACTGGCACTGCTTGTGCGTGGGATC  
 CTACAGCCTTTGTATAATTCCTTTGTTAGCCACGCTTACTAGGAAAAAGTGGTCATGCTGCCATCAAC  
 AAATATGAAGAGAAACCTCCAAACAAGCATTTAGAATGGGTCAGGACCTTGTATCTGAAGCCTTTGG  
 TACCCAGAGCTCACTCGCACTTGTCTCAAACTTCTCCAAAGGTCCTTCAAGGAAGAGTCTGTTTACAGC  
 TTTTAATTCAGTTGAAAAGGGCAGGCAGGAAGAATCCCAGGAGCCTATGCATCCAGACCCAGACAGCTCCA  
 GATGTGCTGTCTCCGAGAGAACGCTTGAGTTGGCCCAATACAAGACAAAATGTGAAAGCCAAAGTGGAT  
 TCATCCTGCACCTCAGACAGCTTCTTCCCGTGGTAACACCAAGTTTGAAGCGCTGACCGTTGTGATCCA  
 GCACCTCTGTCTGAGCGGGAGGAAAGCACTGAAGCAACACAAAACCTCTCTCAAGAAGTGTGACGCTC  
 CGGGGAGAGCTAGTTGCTGCTTCAAGCGCCTGTGAGAAGCTAGAAAAGGCTAGGACTGACTTACAGACAG  
 CGTATCAAGAATTTGTCCAGAACTAAACCAGCAGCATCAGACAGACCGGACGGAAGTGGAGAACCAGGCT  
 GAAGGACTTATACACCGCAGAGTGTGAGAAGCTTCAAGCATTACATTGAGGAGGCAGAAAAATATAAA  
 ACTCAACTGCAAGAGCAGTTTGACAACCTTAAACGCCGCCATGAGACCACTAAGCTTGTGATTGAAGCTA  
 GCCACTCGGAGAAGGTGGAATTGCTGAAGAAGCACTATGAAAACCTCCCTTTCAGAAATCAAGAAGAGCCA  
 TGAGATGGAGAAGAAGTCACTGGAGGATCTGCTTAAAGCAAGGTTGAAATCAGAGGAGCAAAAGCAACTGTCAAGAG  
 GATCTGAAGAGTGAACACGATGCTTTAAACGAAAGGTTGAAATCAGAGGAGCAAAAGCAACTGTCAAGAG  
 AGAAGGCGAATTCAAAAACCTCAGGTCATGTATCTGGAGCAAGAACTAGAAAAGCTGAAGGCTGTGTT  
 AGAGATCAAGAATGAGAAGCTGCACCAGCAGGACATGAAGCTAATGAAGATGGAAGGCTGGTGGACAAT  
 AACACAGCATTGTTGACAAGCTGAAGCGATTCCAGCAGGAAAACGAGGAGTTAAAAGCTCGCATGGACA  
 AACACATGGCAATTTCAAGGCAACTTCCACCGAGCAGGCCGCGCTGCAGGAGTCCCTTGAAGAGGAGTC  
 GAAGGTCAACAAGAGACTGTCCATGGAGAACGAGGAACTTCTGTGAAACTGCACAACGGAGACCTGTGC  
 AGCCCCAAGAGATCCCCACCTCTCGGCCATCCCTTCCAGTCCCCAGGAATTCTGGTTCCTTCTCCA  
 GCCCAGCATCTACCCAGA

**ACGCGTACGCGGCCGCTCGAG - GFP Tag - GTTTAA**

**Protein Sequence:**

>MG225197 representing NM\_001005864  
 Red=Cloning site Green=Tags(s)

MTIPGGFRSCTETDISSTIFINSTLTPPAGSERQYDALLALLVVGSYSLCIIPLLATLTRKSGHAAIN  
 KYEEKPPKQAFQNGSGPLYLKPLVPRASHLLKTSKPGPSRSLFTAFNSVEKGRQKNRSLCIQTQTAP  
 DVLSSERTLELAQYKTKCESQSGFILHLRQLLSRGNTKFEALTVVIQHLLSEREEALKQHKLSQELVSL  
 RGELVAASSACEKLEKARTDLQAYQEFVQKLNQQHQTDRTLENRLKDLTYAECEKLSIYIEEAKEYK  
 TQLQEFDNLNAAHETTKLEIEASHSEKVELLKKTYETSLSEIKKSHEMEKKSLLEDLLNEKQESLEKQIN  
 DLKSENDALNERLKSEEQQLSREKANSKNPQVMYLEQELESKAVLEIKNEKLHQQDMKLMKMEKLVDN  
 NTALVDKLRFRQENEELKARMDKHMAISRQLSTEQAALQESLEKESKVNKRLSMENEELLWKLHNGDLC  
 SPKRSPTSSAIPFQSPRNSGSFSSPISPR

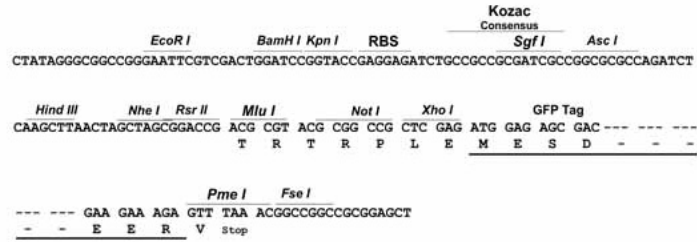
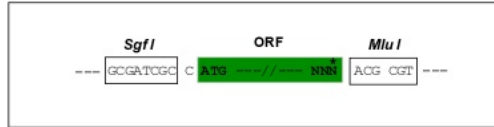
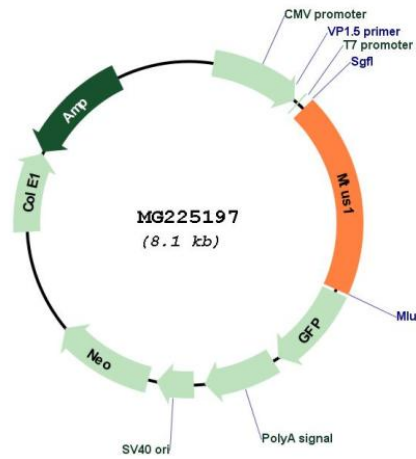
**TRTRPLE - GFP Tag - V**

**Restriction Sites:**

Sgfl-MluI

**Cloning Scheme:**

Cloning sites used for ORF Shutting:


**Plasmid Map:**


ACCN:

NM\_001005864

<b>ORF Size:</b>	1560 bp
<b>OTI Disclaimer:</b>	The molecular sequence of this clone aligns with the gene accession number as a point of reference only. However, individual transcript sequences of the same gene can differ through naturally occurring variations (e.g. polymorphisms), each with its own valid existence. This clone is substantially in agreement with the reference, but a complete review of all prevailing variants is recommended prior to use. <a href="#">More info</a>
<b>OTI Annotation:</b>	This clone was engineered to express the complete ORF with an expression tag. Expression varies depending on the nature of the gene.
<b>Components:</b>	The ORF clone is ion-exchange column purified and shipped in a 2D barcoded Matrix tube containing 10ug of transfection-ready, dried plasmid DNA (reconstitute with 100 ul of water).
<b>Reconstitution Method:</b>	<ol style="list-style-type: none"><li>1. Centrifuge at 5,000xg for 5min.</li><li>2. Carefully open the tube and add 100ul of sterile water to dissolve the DNA.</li><li>3. Close the tube and incubate for 10 minutes at room temperature.</li><li>4. Briefly vortex the tube and then do a quick spin (less than 5000xg) to concentrate the liquid at the bottom.</li><li>5. Store the suspended plasmid at -20°C. The DNA is stable for at least one year from date of shipping when stored at -20°C.</li></ol>
<b>RefSeq:</b>	<a href="#">NM_001005864.3</a> , <a href="#">NP_001005864.1</a>
<b>RefSeq Size:</b>	4158 bp
<b>RefSeq ORF:</b>	1563 bp
<b>Locus ID:</b>	102103
<b>UniProt ID:</b>	<a href="#">Q5HZI1</a>
<b>Cytogenetics:</b>	8 A4
<b>Gene Summary:</b>	Cooperates with AGTR2 to inhibit ERK2 activation and cell proliferation. May be required for AGTR2 cell surface expression. Together with PTPN6, induces UBE2V2 expression upon angiotensin-II stimulation.[UniProtKB/Swiss-Prot Function]