

Product datasheet for **MG225190**

Gnptab (NM_001004164) Mouse Tagged ORF Clone

Product data:

Product Type:	Expression Plasmids
Product Name:	Gnptab (NM_001004164) Mouse Tagged ORF Clone
Tag:	TurboGFP
Symbol:	Gnptab
Synonyms:	EG432486; mKIAA1208
Mammalian Cell Selection:	Neomycin
Vector:	pCMV6-AC-GFP (PS100010)
E. coli Selection:	Ampicillin (100 ug/mL)
ORF Nucleotide Sequence:	>MG225190 representing NM_001004164 Red=Cloning site Blue=ORF Green=Tags(s)

TTTTGTAATACGACTCACTATAGGGCGCCGGGAATTCGTCGACTGGATCCGGTACCGAGGAGATCTGCC
GCC**CGATCGCC**

ATGCTGCTTAAGCTCCTGCAGAGACAGACCTATACCTGCCTATCCACAGGTATGGGCTCTACGTCTGCT
TCGTGGGCGTCGTTGTCACCATCGTCTCGGCTTCCAGTTCGGAGAGGTGGTTCTGGAATGGAGCCGAGA
TCAGTACCATGTTTTGTTGATTCTACAGAGACAACATTGCTGGGAAATCCTTTCAGAATCGGCTCTGT
CTGCCCATGCCAATCGACGTGGTTTACACCTGGGTGAATGGCACTGACCTTGAACCTGCTAAAGGAGCTAC
AGCAGGTCGAGAGCACATGGAGGAAGAGCAGAGAGCCATGCGGGAACCCCTCGGAAGAACAACCGA
ACCGACAAAGAAGAGTGAGAAGCAGCTGGAATGTCTGCTGACGCACTGCATTAAGGTGCCATGCTTGT
CTGGACCCGCCCTGCCAGCAACTGCACCCTGAAGGATCTGCCAACCTTTATCCATCTTCCACGCTG
CCAGCGACATGTTCAATGTTGCGAAACCAAAAAATCCGCTACTAATGTCTCCGTTGTCGTTTTGACAC
TACTAAGGATGTTGAAGACGCCATGCTGGACCGTTAAGGGAGGCAGCAACAGATGGTTTGGAGAGCC
TACTTGACAACAGACAAGAAGCCCTGGCTTAGTGCTGATGCAAGGCTTGGCGTTCTGAGTGGATTCC
CACCGACCTCAAGGAGACGAGTCAACTGAAGACAAAGCTGCCAGAAAAGCTTTCCTCTAAAATAAAGCT
GTTGCGGCTGACTCGGAGGCCAGTGTGCTCTTCTGAAATTGAATAATCCCAAGGTTTCCAAGAGCTG
AACAAGCAGACCAAGAAGAATGACCATCGATGGGAAGGAACGACCATCAGCCCTGCGTATCTGCTGT
GGGACCTGAGTGCCATCAGCCAGTCCAAGCAGGATGAGGACGTGTCTGCCAGCCGCTTGGAGATAATGA
AGAGCTGAGGTAATCGTGCATCTATCGAGAGACACGCCCATGGGTACGGAATATTTTCATTGTCACC
AACGGGCAGATTCATCCTGGCTGAACCTTGACAACCCTCGAGTGACCATAGTGACCCACCAGGACATTT
TCCAAAATCTGAGCCACTTGCTACTTTTCAGTTCCTGCTATTGAAAGTCACATTCACCGCATCGAAGG
GCTGTCCAGAAGTTTATTTATCTAAATGACGATGTCATGTTCCGTAAGGACGTCTGGCCGGACGATTTT
TACAGCCACTCCAAGGTCAAAGGTTTATTTGACATGGCCTGTGCCAACTGTGCAGAGGGCTGCCCGG
GCTCCTGGATTAAGACGGCTATTGTGATAAGGCCTGTAATAACTCAGCCTGTGACTGGGATGGCGGAGA
CTGCTCTGTAATACTGCAGGAACCGTTTGTGACAGGAGTGGGGTACCGGGAATATTGGAGCTGGA



[View online >](#)

CAGCACTGGCAGTTTGGTGGAGGAATAAACACCATCTCTTACTGTAACCAAGGATGTGCAAACCTCTGGC
 TGGCTGACAAGTTCTGTGACCAAGCCTGTAACGCTTATCCTGCGGGTTTGATGCTGGTACTGTGGACA
 AGATCATTTTTATGAATTGTATAAAGTAACACTTCTCCAAACCAGACTCACTATGTTGTCCCAAAGGT
 GAATACCTGTCTTATTTAGCTTTGCAAACATAGCCAGAAGAGGAGTTGAAGGGACCTACAGCGACAACC
 CCATCATCCGCCACGCGTCCATTGCAAACAAGTGGAAAACCATACACCTGATAATGCACAGTGGGATGAA
 CGCAACCACGATCTATTTAACCTCACTCTTCAAACGCCAACGACGAAGAGTTCAAGATCCAGATAGCA
 GTAGAGGTGGACACGAGGGAGGCGCCAAACTGAATTCTACAACCCAGAAGGCCTATGAAAGTTTGGTTA
 GCCCAGTGACACCTCTTCCCTCAGGCTGACGTCCCTTTTGAAGATGTCCCAAAGAGAAAACGCTTCCCAA
 GATCAGGAGACATGATGTAATGCAACAGGGAGATTCCAAGAGGAGGTGAAAATCCCCCGGTAAATATT
 TCACTCTTCCCAAAGAGGCCAGGTGAGGCTGAGCAACTGGATTTGCAACTAGAACGTGGAGACATCA
 CTCTGAAAGGATATAACTTGCCAAGTCAGCCCTGCTAAGGTCTTCTGGGGAATTCACTAGATACTAA
 AATAAACCTCAAGCTAGGACCGATGAAACAAAAGGCAACCTGGAGGTCCACAGGAAAACCTTCTCAC
 AGAGCTCCACATGGCTTGTGTTGTAACACAGATCAGAGAGATGGACTGCCCCAGCAGAGACAGTGACCG
 TGAAAGGCCGTGACCACGCTTTGAATCCACCCCGGTGTGGAGACCAATGCAAGATTGGCCAGCCTAC
 ACTAGGCGTGACTGTGTCAAAGAGAACCTTTCACCGCTGATCGTTCCCCAGAAAGCCACTTGCCAAAA
 GAAGAGGAGAGTGACAGGGCAGAAGGCAATGCTGTACCTGTAAGGAGTTAGTGCCTGGCAGACGGTTGC
 AGCAGAATTATCCAGGCTTTTGGCCTGGGAGAAAAAAGTATTTCCAAGACCTTCTTGATGAGGAAGA
 GTCATTGAAGACCCAGTTGGCGTACTTTACAGACAGCAACATACCGGGAGGCAACTAAAAGATACATTT
 GCAGACTCCCTCCGATACGTCAATAAAATTCTCAACAGCAAGTTTGGATTACATCCAGGAAAGTCCCTG
 CACACATGCCGCACATGATTGACAGGATCGTTATGCAAGAACTCCAAGATATGTTCCCTGAAGAATTTGA
 CAAGACTTCATTTACAAGGTGCGTCACTCTGAGGACATGCAGTTTGCCTTCTCTACTTTTATTACCTC
 ATGAGTGCAGTTCAGCCCTCAATATTTCCAAGTCTTTCATGAAGTAGACACAGACCAATCTGGTGTCT
 TGTCTGATAGGGAAATCCGAACACTGGCCACGAGAATTCAGACCTACCTTTAAGCTTGCAAGATTTGAC
 AGGTTTGGAACACATGTTAATAAATTGCTCAAAAATGCTCCCGCTAATCACTCAACTCAACAACATC
 CCACCGACTCAGGAAGCATACTACGACCCCAACCTGCCTCCGGTCACTAAGAGTCTTGTCACTCAACTGTA
 AGCCAGTAACTGACAAGATCCACAAAGCCTATAAAGACAAGAACAATACAGTTTGAAATCATGGGAGA
 GGAAGAAATCGCTTTCAAGATGATACGAACCAATGTTTCTCATGTGGTTGGCCAGTTGGATGACATCAGA
 AAAAACCCAGGAAGTTCGTTTGTCTGAATGACAACATTGACCACAACCATAAAGATGCCCGGACAGTGA
 AGGCTGTCCTCAGGGACTTCTATGAGTCCATGTTCCCATACCTCCAGTTTGGCTGCCAAGAGAGTA
 TCGGAACCGCTTCTGCACATGCATGAGCTCAAGAATGGCGGCATATCGAGACAAGCTGAAGTTTGG
 ACCCACTGCGTACTAGCAACGTTGATTATTTACTATATTCTCATTTTTTGGCTGAACAGATAATTGCTC
 TGAAGCGAAAGATATTTCCAGGAGGAGGATACACAAAGAAGCTAGTCCAGACCGAATCAGGGTG

AGCGGACCGACGCGTACGCGGCCGCTCGAG - GFP Tag - GTTTAA

Protein Sequence: >MG225190 representing NM_001004164
 Red=Cloning site Green=Tags(s)

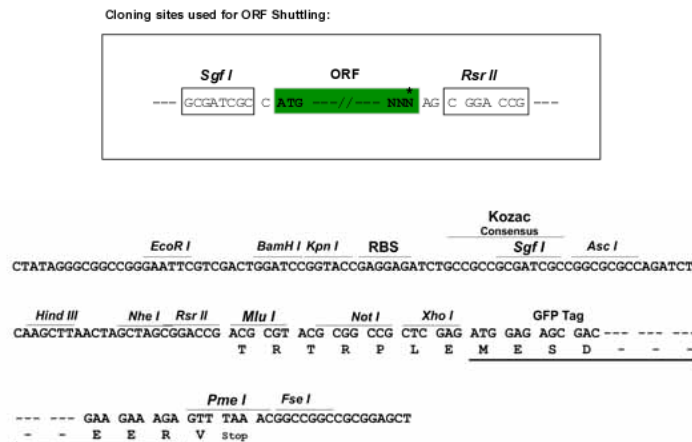
```

MLLKLLQRQTYTCLSHRYGLYVCFVGVVVTIVSAFQFGEVVLEWSRDQYHVLFDSEYRDNIAGKSFQNRCL
LPMPIDVVYTWVNGTDLELLKELQVREHMEEEQRAMRETLGKNTTEPTKKSEKQLECLLTHCIKVPMLV
LDPPLPANCTLKDLPTLYPSFHAASDMFNVAKPKNPSTNVSVVVFDTTKDVEDAHAGPFKGGSKQMVWRA
YLTTDKEAPGLVLMQGLAFLSGFPPTFKETSQKTKLPEKLSKIKLLRLYSEASVALLKLNPKGFQEL
NKQTKKNMTIDGKELTISPAYLLWDLAISQSKQDEVSASRFEDNEELRYSLRSIERHAPWVRNIFIVT
NGQIPSWLNLDNPRVTIVTHQDIFQNLSHLPTFSSPAIESHIHRIEGLSQKFIYLNDDVMFGKDWVPDDF
YSHSKGQKVYLTWPVNPNAEGCPGSWIKDGICYDKACNNSACDWDGGDCSGNTAGNRFVAGGGGTGNIGAG
QHWQFGGGINTISYCNQGCANSWLADKFCQACNVLSGCFDAGDCQDHFHELKVTLLPNQTHYVVPKG
EYLSYFSFANIARRGVEGTYSNPIIRHASIANKWKTIIHLIMHSGMNATTIYFNLTLQANDEEFKIQIA
VEVDTREAPKLNSTTKAYESLVSPVTPLPQADVVPFEDVPKEKRFKPKIRRHDVNATGRFQEEVKIPRVNI
SLLPKEAQVRLSNLDLQLERGDITLKGYNLSKSALLRSFLGNSLDTKIKPQARTDETKGNLEVPQENPSH
RRPHGFAGEHRSERWTAETAETVTVKGRDHALNPPPVLETNARLAQPTLGTVSKENLSPLIVPPESHLPK
EEESDRAEGNAVVKELVPGRRLLQNYPGFLPWEKPKYFQDLLDEEESLKTQLAYFTDSKHTGRQLKDTF
ADSLRYVNKILNSKFGFTSRKVP AHMPHMIDRIVMQELQDMFPEEFDKTSFHKVRHSEDMQFAFSYFYLL
MSAVQPLNISQVFEVDTDQSGVLSREIRTLATRIHDLPLSLQDLTGLEHMLINCSKMLPANITQLNNI
PPTQEAYYDPNLPPVTKSLVTNCKPVTDKIHKAYKDKNKYRFEIMGEEEIFAKMIRTNVSHVVGQLDDIR
KNPRKFVCLNDNIDHNHKDARTVKAFLRDFYESMFPPIPSQFELPREYRNRFLMHMELQEWRAIRDKLFK
THCVLATLIIFTIFSFFAEQIIALKRKIFPRRRIHKEASPDRIV
  
```

SGPTRRRLE - GFP Tag - V

Restriction Sites: SgfI-RsrII

Cloning Scheme:



ACCN: NM_001004164

ORF Size: 3705 bp

OTI Disclaimer: Due to the inherent nature of this plasmid, standard methods to replicate additional amounts of DNA in E. coli are highly likely to result in mutations and/or rearrangements. Therefore, OriGene does not guarantee the capability to replicate this plasmid DNA. Additional amounts of DNA can be purchased from OriGene with batch-specific, full-sequence verification at a reduced cost. Please contact our customer care team at custsupport@origene.com or by calling 301.340.3188 option 3 for pricing and delivery.

The molecular sequence of this clone aligns with the gene accession number as a point of reference only. However, individual transcript sequences of the same gene can differ through naturally occurring variations (e.g. polymorphisms), each with its own valid existence. This clone is substantially in agreement with the reference, but a complete review of all prevailing variants is recommended prior to use. [More info](#)

OTI Annotation: This clone was engineered to express the complete ORF with an expression tag. Expression varies depending on the nature of the gene.

Components: The ORF clone is ion-exchange column purified and shipped in a 2D barcoded Matrix tube containing 10ug of transfection-ready, dried plasmid DNA (reconstitute with 100 ul of water).

Reconstitution Method:

1. Centrifuge at 5,000xg for 5min.
2. Carefully open the tube and add 100ul of sterile water to dissolve the DNA.
3. Close the tube and incubate for 10 minutes at room temperature.
4. Briefly vortex the tube and then do a quick spin (less than 5000xg) to concentrate the liquid at the bottom.
5. Store the suspended plasmid at -20°C. The DNA is stable for at least one year from date of shipping when stored at -20°C.

RefSeq: [NM_001004164.3](#)

RefSeq Size: 5204 bp

RefSeq ORF: 3708 bp

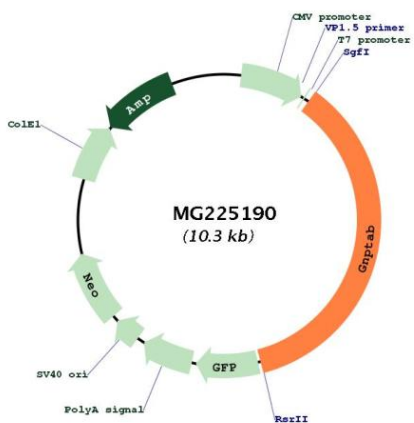
Locus ID: 432486

UniProt ID: [Q69ZN6](#)

Cytogenetics: 10 C1

Gene Summary: Catalyzes the formation of mannose 6-phosphate (M6P) markers on high mannose type oligosaccharides in the Golgi apparatus. M6P residues are required to bind to the M6P receptors (MPR), which mediate the vesicular transport of lysosomal enzymes to the endosomal/prelysosomal compartment.[UniProtKB/Swiss-Prot Function]

Product images:



Circular map for MG225190