

## Product datasheet for **MG225158**

### **Ccdc142 (NM\_001081266) Mouse Tagged ORF Clone**

#### **Product data:**

Product Type:	Expression Plasmids
Product Name:	Ccdc142 (NM_001081266) Mouse Tagged ORF Clone
Tag:	TurboGFP
Symbol:	Ccdc142
Synonyms:	A230058J24Rik
Mammalian Cell Selection:	Neomycin
Vector:	pCMV6-AC-GFP (PS100010)
E. coli Selection:	Ampicillin (100 ug/mL)



[View online »](#)

**ORF Nucleotide Sequence:**

>MG225158 representing NM\_001081266  
 Red=Cloning site Blue=ORF Green=Tags(s)

TTTTGTAATACGACTCACTATAGGGCGGCCGGGAATTCGTCGACTGGATCCGGTACCGAGGAGATCTGCC  
 GCC**CGGATCGCC**

ATGGCACGGGCGTCCAGCTCTAGTGGCCCTTTGCCTCCACTCGCTAACGTACCCTCGTCGTGGGCGCAGC  
 CCGTGGGCGCTGGGAGGAGCGGGACGAGGGGAGGCGTGGAGGGCTAGGGCTACTGGCTGCGGTGAGCGT  
 CCCGTGCCGGACTTCAGCAGACAGCCGTGGGCTCCC GCGTCTGCAAGCGGCCCGATGCCCTTCGCTCTT  
 CAGCGGCTCCGGGCCACATTGCTTCGTCTGCACCGCAGCAGAGCAGCTCCTGCGGGCCCGGACTGCG  
 CCCGCCACCTGCAGGCGGTGTCGCGGCTGCTCCGCTCCGGCTCCTCGGCCGTTCCCTCTCCCTGCAGCA  
 GTTGCACGGCGATTTACAGCTGTGCCATCTCGTGGGCGGCTCTGCGCCTCGGCTTCCCGGGCTCCAGG  
 GAGACGTTCTCCTGACTCGCCCTGTGGGCTAGCTGCCAGCACTTGGAGGCTGCCATCGAGATGCAGC  
 TTCGTTACTGGCCGGACACCCGCTAGCCTGGGCTGACATCCCAGCTAGCCGAAGTGTGCTGGCCCT  
 TCCCTTACCACACTCTGCAGGACATTCCTGAAGTTCGTCGCCGGGCGCGCGCCATTCCCGCGG  
 GCCCGTGTGCTCCAGCTCCTGGCTGCAGAGCGGGTGTGAGGTGGCAGATAAGCTGGCTGAAGCCCGTG  
 GCGGATCGGGCTTGCAGGAGCAGCTCCGTCGGCAGTGCAGCAAGAGCGAGAGCTGCTGCCCGGGCTGCT  
 GGGCTGGTAGGGGGCGTGGCTAGCACCGACAGCAGCGGACTGAGGCTTGGGGGACCTGGAGCCCTGTGG  
 AGCCAGTATTGGACCTTGTGTGGGCGAGCTGTGCTAAGTGTGGACCTACGCGTGGGACCCCTGGGAGG  
 ACCCTAGAGCAATGGCACAAGAGCTGAGTCAGGCACTGTGTCAAGCACCCCTGCCTCAGGAGTGTGAGAA  
 GGAGCTGTTGTCTGTGTACAGCCTGTTTACCAGTCTGTCTGTCAGCTGGGACCAAGGGTCTGCG  
 CAGGCCCTAGGATCAGCCCTGGGTGGTGCAGAGCAGCCCTGCGTCACTGTCTCTACCTCTGAGCTGCTG  
 AGCGGCTTTTCCCTCCCTCTTGGATAGCCTTCGACAGCCAGGCCAGAAGTGTAGGCTGTGTCGCGCTGC  
 AGGTCTACGCTGTGCTCTGGGCTCTGTACCTGCAGACACCTTGCTCTGGTTTGTGGCAGAGCT  
 CAGCAGACCTGGCAGCGTGGGACCCCGGTTCCCTTCTGCTCCTGCTCCAGAAGGATCTGCCTCCTCTTC  
 TGTCTGCGGTGGAGGCGCTGTCCAGCCTGGCCTCCGAAGCAGCGCTCACTCTGGAGGTGGAGCAGCAGCT  
 GGGCTAGAGATCCACAATTTGACTGAAAAGATGCAGCTCCTGCCAAAGAATCACTGGGTCTGTTTGTG  
 CAAGAATGCCATAAACAAGCCACACAAGGCTTCAAGCTCCACATGCCGAGGGGTGATACTGGAGACTTC  
 GATTGTGCTCTGAACCTCCAGTGACCCTAGTGTGAGTACGCTCGGATAGTGGTCTACTCTGTGTTGGAGCC  
 TGTGTTGCAAGGACTTCAGGGATTGCCACCTGAAGCCCAAGCCCTGCCCTCGGCCAGGCACTGACAGCC  
 AACTGGGCGCCTGGCTTGACCACATCCTACCCATGGGATCCGGTTCAGCCTGCAGGGGCGCTGCAGC  
 TCAGCAAGACTTCGGAGTGGTCAGGGAGTTCGGAACAAGAGCAGTGGGGCCTGTGCGAGGAGCTTCG  
 CCAGACTCTGCTCTCACTCAGCATCTTCCAGCAGCTAGATGGGGCCCTGTGTGCTCCTGCAGCAACCC  
 CTGCCAAGAATCCAGTCCACAGAAGACCTCCCGTTGCTGTCTCTGTTATGAGGTCCAGACCACTGAAC  
 TGCCACACAGCAGCCTCAACAGCCTGAAAAGTGGCACCCCTCTTCGCTTGGAGTCTCCCTGCCCA  
 GAACACTCACCTGCTAAGCACCTGGGGGAGGAGGACGAGGAGGGGGAGGGGGAGGACCAGGACCT  
 AGTCTGAGGCTTACCTGGTGGGAAACAGCAAGCCTGGCTTCCCTGAGGCTGCACCAACACCCACGTT  
 GGCACCTGCCTTTTTTTTCTTGCCTGAGGACAAGTCTGAACCC

AG**CGGACCG**ACGCGTACGCGGCCGCTCGAG - GFP Tag - GTTTAA

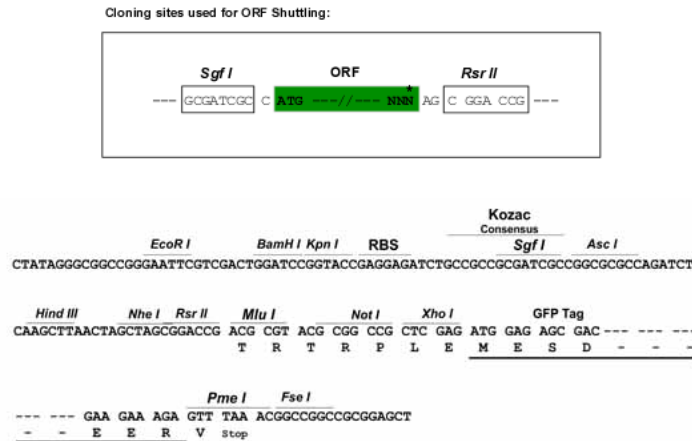
**Protein Sequence:** >MG225158 representing NM\_001081266  
Red=Cloning site Green=Tags(s)

```
MARASSSSG L P P L A N P S S W A Q P V G A G E E R D E G R R G G L G L L A A V S V P C P D F S R Q P W A P A S A S G P M P F A L
Q R L R A T L L R L H R E R E Q L L R A R D C A R H L Q A V V R L L R S G S S A G S L S L Q Q L H G D L Q L C P S R G A A L R L G F P G S R
E T L L L T R P V G L A A Q H L E A A I E M Q L R S L G R T P A S L G L T S Q L A E L L L A L P F Y H T L Q G H S L N F V P G A A R P F P A
A R V L Q L L A A E R G C Q V A D K L A E A R G G S G L Q E Q L R R Q C E Q E R E L L P G L L G L V G G V A S T D S S G L R L G G P G A L W
S Q Y W T L L W A A C A K C L D L R V G P W E D P R A M A Q E L S Q A L C Q A P L P Q E C E K E L L S L C H S L F H Q S V I C S W D Q G F C
Q A L G S A L G G Q S S P A S L S P T S E L L Q R L F P P L L D S L R Q P R P E L R L C P P A G P T P V A L G L C T L Q T T L L W F V G R A
Q Q H L A A W D P G S F L L L L Q K D L P P L L S A V E A L S S L A S E A A L T L E V E Q Q L G L E I H N L T E K M Q L L P K E S L G L F V
Q E C H K Q A T Q G F K L H M P R G R Y W R L R L C P E P P S D P S E Y A R I V V Y S V L E P V L Q G L Q L P P E A Q A P A L G Q A L T A
T L G A W L D H I L T H G I R F S L Q G A L Q L K Q D F G V V R E V L E Q E Q W G L S Q E L R Q T L L S L S I F Q Q L D G A L L C L L Q Q P
L P K N P V H R R P R C C L C Y E V Q T T E L P T S S L N S L E N L A P P L R L G V S P A Q N T H L L S T L G G G R G G G G G G G P G P
S P E A Y L V G N Q Q A W L A L R L H Q H P R W H L P F F S C L R T S P E P
```

SGPTRRRLE - GFP Tag - V

**Restriction Sites:** SgfI-RsrII

**Cloning Scheme:**



**ACCN:** NM\_001081266

**ORF Size:** 2214 bp

**OTI Disclaimer:** The molecular sequence of this clone aligns with the gene accession number as a point of reference only. However, individual transcript sequences of the same gene can differ through naturally occurring variations (e.g. polymorphisms), each with its own valid existence. This clone is substantially in agreement with the reference, but a complete review of all prevailing variants is recommended prior to use. [More info](#)

**OTI Annotation:** This clone was engineered to express the complete ORF with an expression tag. Expression varies depending on the nature of the gene.

**Components:** The ORF clone is ion-exchange column purified and shipped in a 2D barcoded Matrix tube containing 10ug of transfection-ready, dried plasmid DNA (reconstitute with 100 ul of water).

**Reconstitution Method:**

1. Centrifuge at 5,000xg for 5min.
2. Carefully open the tube and add 100ul of sterile water to dissolve the DNA.
3. Close the tube and incubate for 10 minutes at room temperature.
4. Briefly vortex the tube and then do a quick spin (less than 5000xg) to concentrate the liquid at the bottom.
5. Store the suspended plasmid at -20°C. The DNA is stable for at least one year from date of shipping when stored at -20°C.

**RefSeq:** [NM\\_001081266.1](#), [NP\\_001074735.1](#)

**RefSeq Size:** 3129 bp

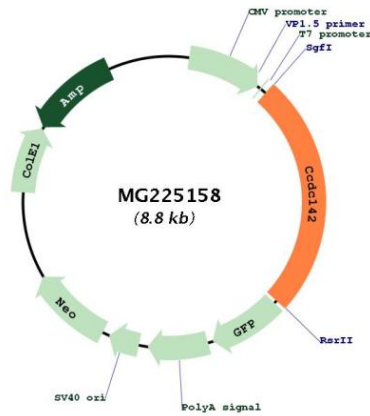
**RefSeq ORF:** 2217 bp

**Locus ID:** 243510

**UniProt ID:** [Q8CAI1](#)

**Cytogenetics:** 6 C3

**Product images:**



Circular map for MG225158