

## Product datasheet for **MG225143**

### Dpp6 (NM\_207282) Mouse Tagged ORF Clone

#### Product data:

Product Type:	Expression Plasmids
Product Name:	Dpp6 (NM_207282) Mouse Tagged ORF Clone
Tag:	TurboGFP
Symbol:	Dpp6
Synonyms:	B930011P16Rik; D5Buc3; D5Buc4; D5Buc5; Dpp-6; DPP VI; Gm1377; In(5)6H-p; Peplb; Rw
Mammalian Cell Selection:	Neomycin
Vector:	pCMV6-AC-GFP (PS100010)
E. coli Selection:	Ampicillin (100 ug/mL)



[View online »](#)

ORF Nucleotide  
Sequence:

>MG225143 representing NM\_207282  
Red=Cloning site Blue=ORF Green=Tags(s)

TTTTGTAATACGACTCACTATAGGGCGGCCGGGAATTCGTCGACTGGATCCGGTACCGAGGAGATCTGCC  
GCC**CGGATCGCC**

ATGGCTTCGCTGTACCAAAGTTACCGGCAAGATCAACACCTCGCGCTCCTTTCCGGCGCCCCGGAGG  
CCAGTCGCTTCTGGGTGGCCAGGGGCCGAGGAGGACGCGGGCCGAAGCCCTTGGGCCGAGGCGCA  
GGCGGTGGCGCCAGGGAGCGCGCGGTGCTGGTGGCCGGCCCCGGTTCCAGTACCAGGCGCGGAGCGAC  
TGTGACGAGGAGGACGAGCTGGTGGGGAGTAATCCTCCACAGAGGAACTGGAAAGGAATCGCCATTGCGC  
TGCTCGTCATCCTTGTCATCTGCTCTGATTGTCACCTCAGTCATCCTGTTGACCCAGCGGAAGATAC  
CAGTCTGTCTCAGAAGAAAAAGTACTGTGGAAGATCTTTCAGTGAAGACTTCAAATCCATGACCCA  
GAGGCAAAGTGGATAAGCAATAAGGAATTCATCTACAGAGAACGGAAAGGGAGTGCATACTGCGGAATG  
TTGAAACAAATAATTCCACGGTGTAAATAGAAGGCAAAAAATTGAATCCTTGAGAGCCATCAGATATGA  
AATATCCCGAGATAAAGAGTATGTGCTGTTCTCCTATAATGTGGAGCCGTATACCAACTCCCACACT  
GGATATTATGTTCTGAGCAAAATTCCTCATGGGGACCCTCAGAGTCTGGACCACCAGAAGTCAGCAACG  
CAAAGCTTCAGTATGCAGGGTGGGGCCAAAAGGCCAGCAGCTGATATTTATCTTTGAGAACAACATCTA  
CTACTGTGCACACGTTGGAAAGCAGGCAATTCGAGTGGTCTCTACAGGGAAGGAGGGCGTGATCTACAAT  
GGCCTCAGTGACTGGCTGTATGAAGAGGAGATTCTGAAGGCCACATCGCTCATTGGTGGTCACCAGATG  
GTACAAGGCTCGCTATGCCACCATCAACGACTCCCGGTTCCACTTATGGAGCTGCCAAGTACACAGG  
CTCTGTCTACCCACTGTGAAGCCCTACCACTATCCTAAGGCTGGCAGTGAACCCAGCATCTCGCTC  
CATGTCTCGGCTTGAATGGACCCACCCAGCAGCTGGAGATGATGCCACCTGATGACCCGCGCATGAGG  
AATATTACATCACCATGGTGAATGGCCACCCAGCAGCAAGGTCGCTGTGACTGGCTGAACCCGGCCCA  
GAATGTGTCAATCCTGACCTCTGTGATGCCACCACGGGTGTCTGCACTAAGAAACATGAAGATGAAAGC  
GAAGCCTGGCTCCACAGACAGAATGAAGAGCCTGTGTTCTCAAAGATGGCAGGAAGTTTTTCTTTGTCA  
GAGCGATCCCACAGGAGGCCGGGTAATTTCTACCATATCACCGTATCATCATCCAGCCCAACAGCAG  
CAATGACAACATCCAGTCTATCACCTCTGGAGACTGGGATGTGACCAAGATCCTGTCTATGATGAGAAG  
CGGAATAAGATCTATTTCTGAGCACAGAAGACCTGCCACGGAGACGACATCTCTACAGTCCAACACGG  
TAGATGACTTCAACAGGCAGTGTCTGTGATGTGACTTGGTGGAGAAGTGCACCTATGTCAGCGCTTCTTT  
CAGCCATAACATGGACTTCTTCTGCTCAAGTGTGAAGGCCCTGGCGTACCCACTGTTACTGTGCATAAC  
ACCACGGACAAGAGAAGAATGTTTACTTGAAGCAAATGAGGAAGTTCAGAAGGCTATCAACGACCGGC  
AGATGCCGAAGATTGAATATCGAAAAATGAAGTAGAAGATTACAGCTTGCCAATGCAAATCTTGAAGCC  
GGCCACCTTACCAGACAGCTCACTACCCCTATTGCTCGTGGTGGATGGTACCCAGGGAGTCAGAGC  
GTGACAGAGAGGTTTGGGTGACCTGGGAAACAGTGTGGTGGTGGAGCAGCCATGGAGCCGTGGTGGTCAAGT  
GTGACGGCCGAGGACGCGGCTTCCAGGGAACCAAGCTCTACAGGAAGTACGGAGCGGCTAGGCTTCTCT  
GGAGGAGAAGGACCAGATGGAAGCTGTAAGAACTATGCTGAAGGAGCAGTATATTGACAAGACTCGGGTA  
GCTGTGTTGGGAAGGATTATGGTGGTACCTGAGCACTTACATCCTCCCAGCCAAGGGAGAAAAATCAAG  
GTCAGACTTTCACCTGCGGCTCTGCGCTCTCCAATAACAGACTTCAAATCTATGCTCTGCATTTTCT  
TGAGAGGTACCTTGGCCTCCATGGACTCGACAACAGAGCGTATGAGATGACCAAGCTGGCACACCGAGTG  
TCAGCACTGGAGGACCAGCAGTTCCTGATCATCCAGCCACGGCCGATGAAAAATCCATTTCCAGCACA  
CAGCTGAGCTCATCAGCAGCTGATCAAGGAAAGGCCAATTACAGCTTACAGATCTACCCAGATGAGAG  
TCACTACTTCCACAGCGTGGCGCTCAAGCAGCACCTGTCCAGGTCCATCATCGGCTTCTTTGTGGAATGT  
TTCAGAGTCCAAGATAAGCTACCAACAGCCACAGCAAAAGAGGAGGAGGAGGAGGAC

**ACCGTACGCGGCCGCTCGAG** – GFP Tag – GTTTAA

**Protein Sequence:** >MG225143 representing NM\_207282  
Red=Cloning site Green=Tags(s)

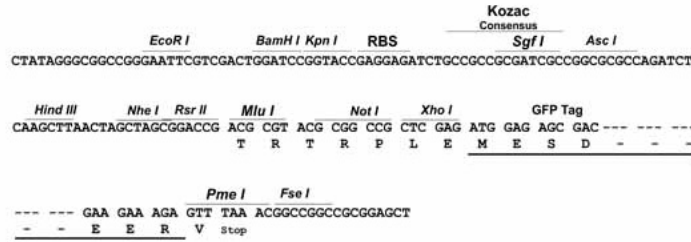
MASLYQRFTGKINTSRSPAPPEASRLLGGQGPEEDAGPKPLGPQAQAVPRERGGAGGRPRFQYQARSD  
CDEEDELVGSNPPQRNWKGIALLVILVICSLIVTSVILLTPAEDTSLSQKKKVTVEDLFSDFKIHDP  
EAKWISNKEFIYRERKGSVILRNVTNNSTVLEGGKIESLRAIRYEISPDKEYVLF SYNVEPVYQHSHT  
GYVLSKIPHGDPQSLDPPEVSNAKLQYAGWGPKGQQLIFIFENNIYYCAHVGKQAIRVSTGKEGVIYN  
GLSDWLYEEEILKSHIAHWWSPDGTRLAYATINDSRVPLMELPTYTGSVYPTVKPYHYPKAGSENPSISL  
HVIGLNGPTHLEMPDPDDPRMREYYITMVKWATSTKVAVTWLNRAQNVSILTLCDATTGVCTKKHEDES  
EAWLHRQNEEPVFSKDGRKFFVRAIPQGGRGKFYHITVSSSQPNSSNDNIQSITSGDWDVTKILSYDEK  
RNKIYFLSTEDLPRRRHLYSANTVDDFNRQCLSCDLVENCTYVSASF SHNMDFFLLKCEGPGVPTVTVHN  
TTDKRRMFDLEANEEVQKAINDRQMPKIEYRKIEVEDYSLPMQILKPATFTDTAHYPLLLVVDGTPGSQS  
VTERFEVTWETVLVSSHGAVVVKCDGRSGFGQTKLLQEVRRRLGFLEEKDQMEAVRTMLKEQYIDKTRV  
AVFGKDYGGYLSTYILPAKGENQGQFTFCGSALSPITDFKLYASAFSERYLGLHGLDNRAYEMTKLAHRV  
SALEDQQFLIIHATADEKIHFAQHTAELITQLIKGKANYSLQIYPDESHYFHSVALKQHLRSIIGFFVEC  
FRVQDKLPTATAKEEEEEED

TRTRPLE - GFP Tag - V

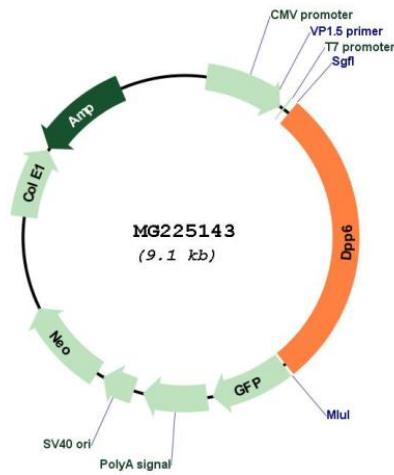
**Restriction Sites:** Sgfl-MluI

Cloning Scheme:

Cloning sites used for ORF Shutting:



Plasmid Map:



<b>ACCN:</b>	NM_207282
<b>ORF Size:</b>	2577 bp
<b>OTI Disclaimer:</b>	The molecular sequence of this clone aligns with the gene accession number as a point of reference only. However, individual transcript sequences of the same gene can differ through naturally occurring variations (e.g. polymorphisms), each with its own valid existence. This clone is substantially in agreement with the reference, but a complete review of all prevailing variants is recommended prior to use. <a href="#">More info</a>
<b>OTI Annotation:</b>	This clone was engineered to express the complete ORF with an expression tag. Expression varies depending on the nature of the gene.
<b>Components:</b>	The ORF clone is ion-exchange column purified and shipped in a 2D barcoded Matrix tube containing 10ug of transfection-ready, dried plasmid DNA (reconstitute with 100 ul of water).
<b>Reconstitution Method:</b>	<ol style="list-style-type: none"><li>1. Centrifuge at 5,000xg for 5min.</li><li>2. Carefully open the tube and add 100ul of sterile water to dissolve the DNA.</li><li>3. Close the tube and incubate for 10 minutes at room temperature.</li><li>4. Briefly vortex the tube and then do a quick spin (less than 5000xg) to concentrate the liquid at the bottom.</li><li>5. Store the suspended plasmid at -20°C. The DNA is stable for at least one year from date of shipping when stored at -20°C.</li></ol>
<b>RefSeq:</b>	<a href="#">NM_207282.3</a> , <a href="#">NP_997165.2</a>
<b>RefSeq Size:</b>	4719 bp
<b>RefSeq ORF:</b>	2580 bp
<b>Locus ID:</b>	13483
<b>UniProt ID:</b>	<a href="#">Q9Z218</a>
<b>Cytogenetics:</b>	5 12.92 cM
<b>Gene Summary:</b>	Promotes cell surface expression of the potassium channel KCND2 (PubMed:22311982). Modulates the activity and gating characteristics of the potassium channel KCND2 (PubMed:22311982). Has no dipeptidyl aminopeptidase activity (By similarity). [UniProtKB/Swiss-Prot Function]