

Product datasheet for **MG225140**

Prkg2 (NM_008926) Mouse Tagged ORF Clone

Product data:

Product Type:	Expression Plasmids
Product Name:	Prkg2 (NM_008926) Mouse Tagged ORF Clone
Tag:	TurboGFP
Symbol:	Prkg2
Synonyms:	AW212535; cGK-II; CGKII; Prkgr2
Mammalian Cell Selection:	Neomycin
Vector:	pCMV6-AC-GFP (PS100010)
E. coli Selection:	Ampicillin (100 ug/mL)



[View online »](#)

ORF Nucleotide Sequence:

>MG225140 representing NM_008926
 Red=Cloning site Blue=ORF Green=Tags(s)

TTTTGTAATACGACTCACTATAGGGCGGCCGGAATTCGTCGACTGGATCCGGTACCGAGGAGATCTGCC
 GCC**CGCATCGCC**

ATGGGAAATGTTTCAGTGAAGCCCAAGCATGCTAAGCACCCAGATGGCCATTCAGGGAACCTCAGCAATG
 AAGCCCTGCGGAGCAAGGTGTTGGAGCTGGAGCGGGAGCTGAGGAGGAAGGACCGGAACCTCAGGAACG
 GGAGTACCACCTGAAGGAGCTTCGGGAGCAGCTGGCCAAGCAGACCGTGGCCATCGCAGAGCTCAGAGAA
 GAACTGCAGAGCAAGTGCATCCAGCTGAACAAGCTGCAGGATGTGATCCACGTGCAGGGAGGAAGCCAC
 TGCAGGCCCTCCTCCGACAAAGTGCCTCTGGATGTTACCGCAAGACCTCAGGCTTGGTCTCGCTCCACAG
 CAGGAGGGGGCGAAGGCTGGAGTGTCTGCAGAGCCAACCACCCGAACCTATGACCTCAACAAACCCCCC
 GAGTTTTCTTTGAGAAAGCGAGAGTCAAGGATTCCAGTGAAGAAAGCTCATCACAGATGCCCTGA
 ATAGAACCAGTTTCTGAAGAGATTGGATCCCCAGCAGATCAAGGACATGGTGAATGCATGTACGGGAG
 AAATATCAACAGGGCAGCTACGTCATTAAGCAGGGGGAACAGGCAACCATATCTTTGTGCTGGCCGAG
 GGTAGACTTGAGGTGTTCCAGGGAGAGAAGTTGCTATCATCCATCCCAATGTGGACCACGTTTGGGGAAC
 TGGCTATTTGTACAACCTGACTCGGACTGCCTCAGTGAAGCGATTACCAATGTTAAAACCTTGGGCCCT
 CGATAGAGAGGTTTTCCAGAACATTATGAGGAGAACAGCCCAAGCCCGGGATGAGGAGTACAGAACTTC
 CTCAGAAGTGTCTCCTGTTGAAGAATTAACCTGAAGCAAACTAACCAAGATCATTGACTGCTTGGAAAG
 TGGAACTATGACAAAGGAGATTACATCATCAGAGAAGGAGAAGAAGGGAGCACCTTTTTCATTTTGGC
 AAAAGGCAAGGTGAAAGTACACAGAGCACAGAGGGCCATGATCAGCCACAGTTGATCAAGACACTGCAG
 AAATGATGTGCGATGCCTCGTATAGATCGAGAAACATTCAACCAAACTGTCGGGACATTTGATGAACT
 CCAAAAATATCTTGAGGGGTATGTGGCCACCCTGAACCGTGACGATGAAAAAAGACACGCAAGCGCTCC
 ATGCTAGCTGGAAGCTGTCAAAGCCCTTCTCTGGAGATGATTCAGCTGAAAGAGAAGGTGGCCCGAT
 TCTCCTCAACCTCCCATCCAGAACCTCGAGATTATCGCAACCTGGGCGTTGGTGGGTTGGAAGAGT
 GGAGCTTGTTAAAGTAAAAATGAGAAATGTTGCTTTTGGCATGAAGTGTATAAGGAAGAAGCACATTGTT
 GATACAAAGCAGCAAGAACATGTCTACTCAGAAAAGAGGATCCTGGAAGAGCTGTGTTCTCCCTTCATCG
 TGAAGTTGTATCGTACTTTCAAGGACAATAAATATGTATACATGCTTCTGGAGGCTGCTTAGGTGGGA
 GCTGTGGAGTACTGAGGGACAGAGGCAGCTTCGATGAACCCACCTCCAAATCTGTGTCGCTTGTGTG
 ACAGAAGCATTGATTATCTGCACCGACTAGGCATCATCTACAGAGACCTGAAGCCAGAGAACTTAATTC
 TGGATGCCGATGGCTACCTTAAGTTGGTTGACTTTGGATTGCTAAGAAGATTGGCTCTGGACAGAAAAC
 GTGGACATTCTGTGGGACTCCAGAGTATGTGGCCCCGAGGTCATTCTTAACAAAGGACATGACTTCAGT
 GTGGATTTCTGGTCCCTGGGATTCTGGTCTATGAGCTCCTAACGGGCAACCCCTCCCTTTTCTGGGATAG
 ACCAAATGATGACCTACAATTTGATTCTCAAGGGAATCGAGAAAATGGATTTCCCCAGAAAAGATAACAAG
 GCGCCCTGAGGATTTGATCCGGAGGCTTTCAGGCAAAACCAACAGAAAAGGCTGGGAAATCTGAAGAAC
 GGGATCAACGACATTAAGAAACACAGGTGGTTAAATGGTTTTAATTGGGAAGGCTGAAAGCACGGAGCC
 TTCCGTACCTTTACGGAGAGAGCTCAGTGGCCCCATAGATCACAGCTACTTTGACAAGTATCCTCCTGA
 AAAGGGGTGCCTCCGGATGAAATGTCAGGCTGGGATAAAGACTTC

ACGCGTACGCGGCCGCTCGAG - GFP Tag - GTTTAA

Protein Sequence: >MG225140 representing NM_008926
 Red=Cloning site Green=Tags(s)

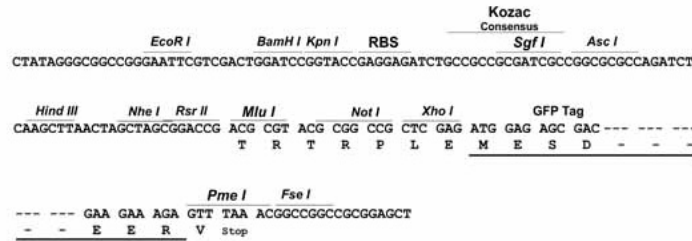
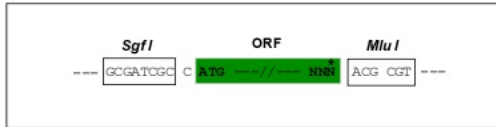
MNGSVKPKHAKHPDGHSGNLSNEALRSKVLLELERELRRKDAELQEREYHLKELREQLAKQTVAIAELTE
 ELQSKCIQLNKLQDVIHVQGGSPQLQASPDKVPLDVHRKTSGLVSLHSRRGAKAGVSAEPTTRTYDLNKKPP
 EFSFEKARVRKDSSEKKLITDALNKNQFLKRLDPQQIKDMVECMYGRNYQQGSYVIKQGEPEGNHIFVLAE
 GRLEVFQGEKLLSSIPMWTTFGELAILYNCTRRTASVKAITNVKTWALDREVFQNIIMRRTAQARDEEYRNF
 LRSVSLKLNLPEDKLTKIIDCLEVEYYDKGDYIIREGEEGSTFFILAKGKVKVTQSTEGHDQPQLIKTLQ
 KGEYFGEKALISDDVRSANIAEENDVACLVIDRETFNQTVGTDELQKYLEGYVATLNRDDEKRHAKRS
 MSSWKLSKALSLEMIQLKEKVARFSSTSPFQNLLEIIATLGVGGFGRVELVKVKNENVAFAMKCIRKKHIV
 DTKQQEHVYSEKRILEELCSPFIVKLYRTFKDNKYVYMLLEACLGGELWSILRDRGSFDEPTSKFCVACV
 TEAFDYLHRLGIYRDLKPENLILDADGYLKLVDFGFAGKIGSGQKTWTFCGTPEYVAPEVILNKGHDFS
 VDFWSLGIIVYELLTGNPPFSGIDQMMTYNLILKGIEMDFPRKITRRPEDLIRRLCRQNPTERLGNLKN
 GINDIKHRWLNNGFNWEGLKARSLPSPLRRELSPIDHSYFDKYPPEKGVPPDEMSEGWKDF

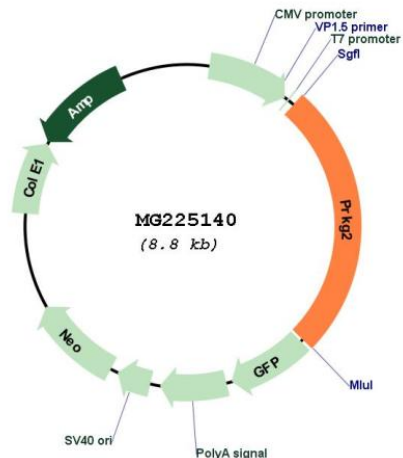
TRTRPLE - GFP Tag - V

Restriction Sites: SgfI-MluI

Cloning Scheme:

Cloning sites used for ORF Shutting:



Plasmid Map:


ACCN: NM_008926

ORF Size: 2286 bp

OTI Disclaimer: The molecular sequence of this clone aligns with the gene accession number as a point of reference only. However, individual transcript sequences of the same gene can differ through naturally occurring variations (e.g. polymorphisms), each with its own valid existence. This clone is substantially in agreement with the reference, but a complete review of all prevailing variants is recommended prior to use. [More info](#)

OTI Annotation: This clone was engineered to express the complete ORF with an expression tag. Expression varies depending on the nature of the gene.

Components: The ORF clone is ion-exchange column purified and shipped in a 2D barcoded Matrix tube containing 10ug of transfection-ready, dried plasmid DNA (reconstitute with 100 ul of water).

Reconstitution Method:

1. Centrifuge at 5,000xg for 5min.
2. Carefully open the tube and add 100ul of sterile water to dissolve the DNA.
3. Close the tube and incubate for 10 minutes at room temperature.
4. Briefly vortex the tube and then do a quick spin (less than 5000xg) to concentrate the liquid at the bottom.
5. Store the suspended plasmid at -20°C. The DNA is stable for at least one year from date of shipping when stored at -20°C.

RefSeq: [NM_008926.4](#), [NP_032952.3](#)

RefSeq Size: 4696 bp

RefSeq ORF: 2289 bp

Locus ID: 19092

Cytogenetics: 5 48.35 cM