

## Product datasheet for **MG225131**

### Dysf (NM\_021469) Mouse Tagged ORF Clone

#### Product data:

Product Type:	Expression Plasmids
Product Name:	Dysf (NM_021469) Mouse Tagged ORF Clone
Tag:	TurboGFP
Symbol:	Dysf
Synonyms:	2310004N10Rik; AI604795; D6Pas3
Mammalian Cell Selection:	Neomycin
Vector:	pCMV6-AC-GFP (PS100010)
E. coli Selection:	Ampicillin (100 ug/mL)
ORF Nucleotide Sequence:	>MG225131 representing NM_021469 Red=Cloning site Blue=ORF Green=Tags(s)

TTTTGTAATACGACTCACTATAGGGCGGCCGGAATTCGTCGACTGGATCCGGTACCGAGGAGATCTGCC  
GCC**CGATCGCC**

ATGCTCTGTTGCTTGGCAAGGGCCAGCAACCTCCCAATGTGAAGAAGGACCGGCGCAGCGATCCAG  
TTGCCAGCCTGATTTTTCGAGGGGTAAGAAGAGAACCAAAGTCATCAAGAACAGTGTGAACCCCGTGTG  
GAATGAGGGCTTTGAGTGGGACCTCAAAGGTATTCCTCTAGATCAGAGCTCAGAATTCTCGTGGTGGTC  
AAGGACCATGAGACGATGGGAAGAAACAGTTCTGGGGGAAGCCAAGATCCCACTCCAGGAGGTCTTGT  
CCACCCAGCCTCTCTGCCAGTTCAACGCACCTCTGCTAGACGCCAAGCAGCAACCCACGGGGGCTC  
TCTGGTCTGCAGGTGTCTACACGCCACCCCAAGGAGCTGTGCCCTGTTCCCACACCTGCTTCTCTA  
GCACCCCTCCCGACACTGCCTGACATGGATCTGGTGCCTGGTGGGGGACAGAGCCGGGCTGAGACTTGGT  
CCCTGCTCAGTGACAGCACCATGGACACGAGATACTCTGGGAAGAAGTGGCCGGTCCCACGGACACAGG  
AGGGGAGGAAGACACCGAGGACCAGGGCCTGACTGGAGATGAAGCTGAGCCGTTCTGGACCAGAGTGT  
GCTGTGGGCCAGGGGACCGACACCCAGGAAGCCACCTCCCACCTCCTCCCACTATCCAGGGG  
CAAAAAGAAAAGAAGCTCTGCCCCACCTAGAAAGCTGCTGTGAGACAAGCCACAGGACTCCAGATCAG  
AGTCCAGGTGATAGAGGGGCGTCAGCTGCCTGGGGTGAATATTAAGCCTGTGGTCAAGGTCACAGCTGCT  
GGGCAGACCAAGCGAAGCTCGGATCCAGAAGGAAATAGCCCACTTTCAATGAGACTCTTTTCTTCAACG  
TATTTGACTCTCCCTGGAGCTGTTGATGAGCCCATCTTCATCACGGTGGTGGACTCACGCTCCCTTAG  
GACAGATGCCCTCCTTGCGAGTTCCGGATGGATGTGGGCACCGTGTACAGAGAGCCCGACACGTTAT  
CTCCGGAAGTGGCTGCTGCTCTCCGACCCTGATGACTTCTCTGCGGGGGCCAGAGGCTACCTCAAAGCCA  
GCCTGTGTGTGCTAGGGCCTGGAGATGAAGCTCCCTGGACAAGAAGGACCCTTCTGAAGACAAAGAGGA  
CATTGAAGGCAACCTGCTTAGGCCACCGGTGTGGCCCTTCGAGGAGCCCACTTCTGCCTGAAGCTCTTC  
CGGGCTGAGGACTTACCACAGATGGACGATGCTGTGATGGACAACGTCAAGCAGATCTTTGGCTTTGACA  
GCAACAAGAAGAACTTGGTGGATCCCTTTGTGGAAGTCAGCTTTGCTGGGAAAATGCTCTGCAGCAAGAT  
CCTGGAGAAGACAGCTAACCCCTCAGTGAACCAGAACATCACCTTGCTGCGATGTTCCCTCTATGTGT



[View online »](#)

GAAAAATGAGGATTCGTGTCATGGACTGGGACCGCCTCACTCACAATGACACTGTGGCCACCACCTACT  
 TGGGTATGTGAAAAATCTCTGCTACTGGAGGAGAAATAGAAGTGGACGACAACTGGGCTTCTCCCCAC  
 TTTTGGGCCCTGCTATGTGAACCTCTATGGCAGTCCCCGAGAGTTCACGGGCTTCCCAGATCCTTATGCA  
 GAGCTCAACACAGGAAAGGGAGAAGGTGTGGCTTATCGAGGCAGGGTTCCTGTTGTCCCTGGAGACAAAC  
 TGTTGGAACACAGTGAGCAGAAGGTGGAAGACCTTCTGCTGATGATATCCTGCGTGTGGAGAAGTACCT  
 GCGGAGGGCAAAATATCCCTCTTTGCTGCCTTCTACTCAGCCACAATGCTGCAGGATGTGGATGACGCC  
 ATCCAGTTCGAGGTCAGCATTGGGAACACGGAACAAGTTCGACACCACCTGCCCTGCCCTGGCCTCCA  
 CCACCCAGTACAGCCGGGCGGTCTTTGATGGATGCCACTACTATTACTTGCCTTGGGGCAACGTGAAGCC  
 CGTGGTGGTGTCTCCTCATACTGGGAAGACATCAGCCATCGAATTGAGATCCAAAAACGCTCCTCAGG  
 GTCGCTGACCGCCTGGAAGCTAACCTGGAGCAGGTCCACTTGGCTCTGAAGGCACAGTGTTCCTCCGAGG  
 ATGTGGACGCCCTGGTGGCTCAGTTGACAGATGAGCTCCTTGACACTGCAGCCAGCCCTGTGTGACAT  
 CCACGAGATACCTTCTGCCACCCACCTTGATCAGTACCTGCTCCGGCTACGCACCCGTCACCTGAGCCAG  
 ATCAAAGAAGCTGCTCTGGCCTGAAGCTTGGCCATAGTGAAGTCTCCACTGCCCTGGAGCAGGCCGAGG  
 ACTGGCTTCTGCATCTCCGTGCCCTGGCCGAGGAGCCCCAGAACAGCCTGCCGGACATCATCTGGAT  
 GCTGCAGGGTGACAAGCTGTGGCTACCAGCGGGTGCCTGCCATGAAGTCTTCTCCCGCGGGGC  
 CCCAGTACTGCCGCAGGAACTGTGGGAAGCTGCAGACCATCTTCTGAAATATCCTATGGAAGGTATGC  
 CTGGGGCCCAATGCCCGTGCAGATTCCGATCAAGCTCTGGTTCGGGCTCTCTGTGGATGAGAAGGAATT  
 CAATCAGTTTGTGAGGGAAAGCTCTGTCTTTGCCAAACGTATGAGAACCAGACAAAGCTGGCACTG  
 GTCGGAACTGGGGCACAACGGGCTCACCTACCCCAAGTTTTCTGATGTACAGGCAAGATCAAACCTAC  
 CAAAGGATAGCTTCCGCCCTCAGCTGGCTGGGCTGGGAGGAGATTGGTTCGTGTGTCCAGAGAAGAC  
 CCTACTCCATGATGCTGACGCTGGTCACTGAGCTTCTGGAGGAGGTGTTGAGAACCAGACCCGGCTC  
 CTGGGGCCAGTGGATTTACATGAGTGATAACTACACAGATGTGAATGGGGAGAAGTACTTCCGAAGG  
 ATGATATTGAATGCCCGCTGGCTGGAAGTGGGAAGATGAAGAATGGTCCACAGACCTCAATCGGCTGT  
 TGATGAACAAGGCTGGGAGTACAGCATACCATACCCCAAGACCAGAAAGCCAAAACACTGGGTCCCTGTT  
 GAGAAGATGTATTACACTCACAGCGCTCGACGCTGGTCCGACTGCGCAGGAGGGACCTCAGCCAGATGG  
 AAGCACTGAAGAGGCACAGGCAGGCAGAGGCCGAGGGCGAGGGCTGGGAGTATGCCTCTCTCTCGGCTG  
 GAAGTTCACCTGGAGTACCGCAAGACAGATGCCTTCCGCGCCGCGCTGGCGCCGCGCATGGAGCCG  
 CTGGAAGAAGACGGGACCTGCAGCTGTGTTTCCCTCGAGGGGGCCTGGGCGCATGGTGGATGACAAGA  
 GCGAAGACTCCATGTCTGTTTCTACCCTGAGCTTTGGCGTTAACAGACCCACAATCTCCTGCATCTTTGA  
 CTATGGGAACCGTACCATCTGCGCTGCTACCTGTACCAGGCCGAGACCTGCCAGCCATGGACAAGGAC  
 TCCTTCTCTGATCCCTACGCCATCGTCTCCTTCTGCATCAAAGCCAGAAGACAGTGGTGGAGAAGAACA  
 CCCTGAATCCCACCTGGGATCAAACCTCATCTTCTATGAGATTGAGATCTTCGGCGAGCCAGCCAGTAT  
 CGCCGAGCATCCGCCCTGCATCGTGGTGGAGCTCTATGACCACGACACCTATGGTGTGACGAGTTCATG  
 GGTGCTGTATTTGTGAGCCAAGCCTGGAACGGATGCCCGCCTGGCCTGGTTCCTACTGACCCGGGGCA  
 GCCAGCCTGCCGGCAGCTGCTGGCAGCGTTTCGAGCTTATCCAGAGAGAGAAGCCAGCCATCCATCACAT  
 CCCTGGCTTTGAGATGCATGAAACTTCAAGGATTTTGGATGAGACGGAGGACACAGATTTGCCTTACCCA  
 CCACCTCAAAGGGAGGCCAACATCTACATGGTTCCCCAGAACATTAAGCCAGCTCTCCAACGTACTGCCA  
 TTGAGATCCTGGCCTGGGCTGCGGAACATGAAGAGCTATCAGATGGCCAGCATCTTCCCCAGCCTT  
 CGTGGTGGAGTGTGGTGGCAGACAGTGCAGTCTGTGATCAGAAACCTTCGGAAGAACCCCAACTT  
 GATGTCTGTACTCTTTCATGGAAGTGATGTTACCCAGAGAGGACCTCTACTGTCCACCTATTGTGGTCA  
 AGGTCATTGATAATCGCCAGTTTGGCCCGGCCAGTTGTGGGTGAGTGTACCATTGCTCCCTGGAGAA  
 CTTCTGTGCGACCCATACTCAGCAGAGAGTCCATCCCCACAGGGTGGCCAGATGATGTGAGCTTACTC  
 AGCCCCGGGAAGATGTGCTGATTGACATCGATGACAAGGAGCCTCTCATTCTGTCCAGGAGGAGGAGT  
 TCATTGACTGGTGGAGCAAATCTTTGCTTCTGTGCGGGAGAGGGAAAAGTGTGGTTCCTACCTGGAGAA  
 GGATTTTGACACCTTGAAGTCTATGACACACAGCTGGAGAATGTGGAGGCTTTTGGAGGCTGTCCGAC  
 TTTTGTAAACCTTCAAGCTCTACCGGGCAGGACTCAGGAGGAGACAGATGATCCATCTGTCTATCGGAG  
 AATTTAAGGGTCTTTCAAATTTATCCCCTCCAGAAGATCCAGCCATCCCCATGCCCCGAGACAATT  
 CCATCAGCTGGCTGCTCAGGGTCCCAGGAATGCTTGGTCCGATTTATATCGTCCGAGCATTTGGCTTA  
 CAGCCCAAGGACCCCAATGGCAAGTGTGACCTTACATCAAGATCTCCATAGGGAAGAAATCAGTGAAGT  
 ACCAGGATAACTACATCCCTTGACCCCTGGAGCCTGTATTGCGAAAGATGTTTGAACCTCACCTGCACTCT  
 ACCTCTGGAGAAGGACCTGAAGATCACACTCTACGATTATGACCTGCTCTCAAGGATGAGAAGATTGGG  
 GAGACGGTCATAGACCTGGAGAACAGGCTGCTGTCCAAGTTTGGGGCTCGCTGTGGGCTCCCACAGACCT

ACTGTGTCTCTGGACAAATCAGTGGAGAGATCAGCTCCGCCCTCCAGCTCCTCCACCTTTCTGCCA  
GCAGCACAGGATCAAGGCCCCCGTACCAGGACAGACCGAGTGACGTTTCAGGATAAGGACTACACCATT  
GAGGAGATAGAGGCTGGCAGACTCCAAACCCACACCTGGGCCAGTGGAGGAACGCTTAGCCCTGCATG  
TCCTTCAGCAACAAGGCTTGGTTCCTGAGCATGTGGAGTACGGCCTCTTATAGTCCTCTGCAGCCAGA  
TATCGAGCAGGGGAAGCTACAGATGTGGATTGACATATTTCAAAGGTGCTGGGCCGGCCTGGACCTCCC  
TTCAACATCACCCACGAAAAGCTAGAAGGTTTTTCTGCGTTGTATTATTTGGAACACAAAAGATGTGA  
TCTTGGATGACCTCAGTCTCACGGGGGAGAAGATGAGTGACATCTATGTGAAAGGCTGGATGGTGGGATT  
CGAAGAACACAAGCAGAAGACAGATGTGCACTACCGCTCCCTGGGTGGGAGGGCAATTTCAACTGGAGG  
TTCGTGTTTCCCTTCGACTATCTGCCTGCTGAGCAAGTCTGTGCTGTTGCCAAGAAGGATGCCTTCTGGA  
GACTCGACAAGACAGAGAGCAAGATCCCAGCACGTGTGGTCTTCCAGATCTGGGACAATGACAAATTCTC  
TTTTGATGACTTTCTGGGCTCTCTGCAGCTGGATCTCAACCGAATGCCAAGCCAGCCAAGACGGCTGAG  
AAGTGCTCCTTGGACCAGCTGGATGACACCTTCCACCCAGAATGGTTTGTGTCCCTTTTTGAGCAGAAGA  
CAGTGAAGGATGGTGGCCTTGTGTGACAGAGGAGGGCGAGAAGAAGATGTTGGCGGGCAAGCTGGAAT  
GACCTTGGAGATTGTTGCAGAAAAGTGAACATGAAGAGCGGCCTGCTGGCCAAGGTCGGGATGAACCCAAC  
ATGAATCCGAAGCTAGAGGATCCAAGGGCCCCGATACTTCTTCTGTGGTTACCTCCCCGTACAAGA  
CCATGAAGTTCATCTTGTGGCGACGCTTCCGGTGTGCCATCATCCTTTCATCATCCTTTCATCCTCCT  
GCTCTTCTGGGTGCTTTGTCTACGCCTTCCCGAACTACGCTGCCATGAAGCTGGTGAAGCCCTTTCGA

ACGCGTACGCGGCCGCTCGAG - GFP Tag - GTTAA

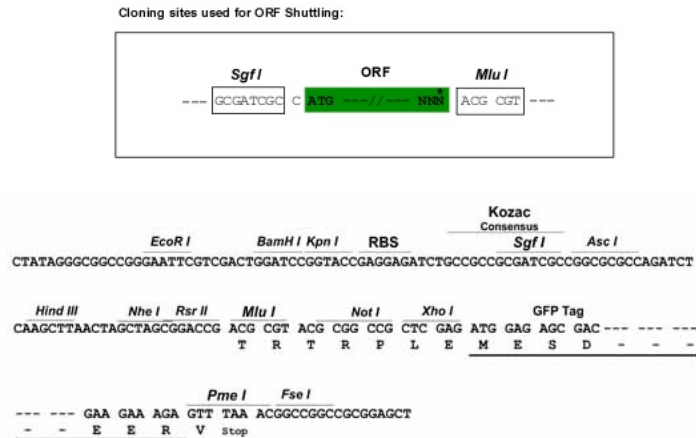
Protein Sequence: >MG225131 representing NM\_021469  
 Red=Cloning site Green=Tags(s)

```

MLCCLLARASNLPNVKKDRRSDPVASLIFRGVKKRTKVIKNSVNPVWNEGFEDLKGIPLDQSSSELLVVV
KDHEMGRNRFLGEAKIPLQEVLATPSLSASFNAPLLDAKQQTGASLVLQVSYTPPPGAVPLFPPASPASL
APSPTLPMDDLVPGGGQSRATWSLLSDSTMDTRYSGKKWPVPTDTGGEDTEDQGLTGDEAEPLDQSA
AVGPGGPTTPRKPPSHPPHYGAKRKRSSAPPRKLLSDKPQDFQIRVQVIEGRQLPGVNIKPVVKVTA
GQTKRTRIQKGNLSPFNELFFNVFDSPLELFDPEIFITVVDSSRLRTDALLGEFRMDVGTVYREPRHAY
LRKWLLLSDPDDFSAGARGYLKASLCVLPDDEAPLDDKDPSEDKEDIEGNLLRPTGVALRGAHFCLKLF
RAEDLPQMDDAVMDNVKQIFGFDSNKKNLVDPFVEVSFAGKMLCSKILEKTANPQWNQITLPAFSPMC
EKMRIRVMDWRDLTHNDTVATTYLGMSKISATGGEIEVDDNLGFLPTFGPCYVNLVYSPREFTGFPDPA
ELNTGKGEVAYRGRVLLSLETKLVEHSEQKVEDLPADDILRVEKYLRRRKYSLFAAFYSATMLQDVDDA
IQFEVSIQNYGNKFDTTCLPLASTTQYSRAVFDGCHYYLPGWNVKPVVVLSSYWEDISHRIEIQNQLLR
VADRLEANLEQVHLAKAQCSSEVDALVAQLTDELLADCSQPLCDIHEIPSATHLDQYLLRLRTRHLSQ
IKEAALAKLGHSELSTALEQAEDWLLHLRALAEEPQNSLPDIIWMLQGDKRVAYQRPAAHEVLFRRRG
PSYCGRNCGLQTIFFLKYPMEGMPGARMVQIRIKLWGLSVDEKEFNQFAEGKLSVFAETENQTKLAL
VGNWGTGLTYPKFSDVTGKIKLPKDSFRPSAGAWAGDWFVCEKTLTLLHDADAGHLSFVEEVFNQTRL
PGGQWIYMSDNYTDVNGEKVLPKDDIECPLGKWEDEEWDLDLNRVDEQGWESITIPPDRKPKHWVVP
EKMYTHRRRRWVRLRRRDLQMEALKRHRQAEAEAGEGWEYASLFGWKHLEYRKTDAFRRRRWRRRMEP
LEKTGPAVFALEGALGGMVDDKSEDSMSVSTLSFGVNRPTISCFIDYGNRYHLRCYLQYARDLPAMDKD
SFDPAIYVSVFLHQSQKTVVEKNTLNPTWDQTLIFYEIEIFGEPASIAEHPPCIVVELYDHDYGADEFM
GRCICQPSLERMPRLAWFPLTRGSQPAGELLAAFELIQREKPAIHHIPGFEMHETSRILEDTEEDLPPY
PPQREANIYMPQNIKPALQRTAIEILAWGLRNMKSYQMASISSPSLVVECGGQTVQSCVIRNLRKNPNF
DVCTLFMEVMLPREDLYCPIVVKVIDNRQFGRRPVVGQCTIRSLENFLCDPYSAESPSQGGPDDVSL
SPGEDVLIDIDDKEPLIPVQEEFIDWWSKFFASVGEREKCGSYLEKDFDTLKVYDTQLENVEAFGGLSD
FCNTFKLYRGRTEETDDPSVIGEFKGLFKIYPLPEDPAIPMPRQFHQLAAQGPQECLVRIYIVRAFG
QPKDPNGKCDPYIKISIGKKSVDQDNYIPCTLEPVFGKMFELTCTLPLEKDLKITLYDYDLLSKDEKIG
ETVIDLENRLLSKFGARCGLPQTYCVSGPNQWRDQLRPSQLLHLFCQQRHRIKAPVYRTDRVTFQDKDYTI
EEIEAGRLPNPHLGPVEERLALHVLQQQLVPEHVESRPLYSPLQPDIEQGLQMWIDIFPKVLGRP
FNITPRKARRFLRCIIWNTKDVILDDLSTGKMSDIYVKGWVGFEEHKQKTDVHYRSLGGEGNFWNR
FVFPFDYLPAEQVCAVAKKDAFWRLDKTESKIPARVVFQIWDNDKFSFDDFLGSLQLDLNRMPKPAKTAE
KCSLDQLDDTFHPEWVSLFEQKTVKGWVPCVTEEGEKMLAGKLEMTLEIVAESSEHEERPAQGRDEPN
MNPKLEDPRRPTSFLLWFTSPYKTMKFIWRRFRCAIILFIILFILLFLGTVFYAFPNYAAMKLVKPF
  
```

TRTRPLE - GFP Tag - V

Restriction Sites: SgfI-MluI

**Cloning Scheme:**


**ACCN:** NM\_021469

**ORF Size:** 6300 bp

**OTI Disclaimer:** The molecular sequence of this clone aligns with the gene accession number as a point of reference only. However, individual transcript sequences of the same gene can differ through naturally occurring variations (e.g. polymorphisms), each with its own valid existence. This clone is substantially in agreement with the reference, but a complete review of all prevailing variants is recommended prior to use. [More info](#)

**OTI Annotation:** This clone was engineered to express the complete ORF with an expression tag. Expression varies depending on the nature of the gene.

**Components:** The ORF clone is ion-exchange column purified and shipped in a 2D barcoded Matrix tube containing 10ug of transfection-ready, dried plasmid DNA (reconstitute with 100 ul of water).

**Reconstitution Method:**

1. Centrifuge at 5,000xg for 5min.
2. Carefully open the tube and add 100ul of sterile water to dissolve the DNA.
3. Close the tube and incubate for 10 minutes at room temperature.
4. Briefly vortex the tube and then do a quick spin (less than 5000xg) to concentrate the liquid at the bottom.
5. Store the suspended plasmid at -20°C. The DNA is stable for at least one year from date of shipping when stored at -20°C.

**RefSeq:** [NM\\_021469.3](#), [NP\\_067444.2](#)

**RefSeq Size:** 6643 bp

**RefSeq ORF:** 6303 bp

**Locus ID:** 26903

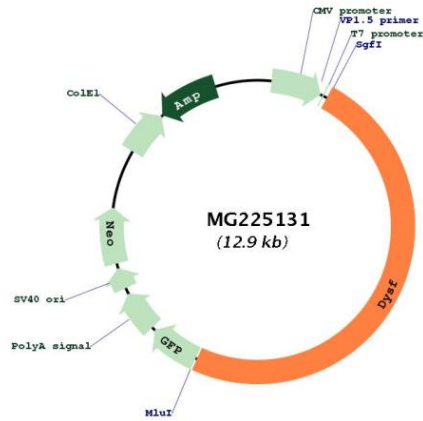
**UniProt ID:** [Q9ESD7](#)

**Cytogenetics:** 6 36.14 cM

**Gene Summary:**

Key calcium ion sensor involved in the Ca(2+)-triggered synaptic vesicle-plasma membrane fusion. Plays a role in the sarcolemma repair mechanism of both skeletal muscle and cardiomyocytes that permits rapid resealing of membranes disrupted by mechanical stress. [UniProtKB/Swiss-Prot Function]

**Product images:**



Circular map for MG225131