

Product datasheet for **MG225124**

Fgfr2 (NM_010207) Mouse Tagged ORF Clone

Product data:

Product Type:	Expression Plasmids
Product Name:	Fgfr2 (NM_010207) Mouse Tagged ORF Clone
Tag:	TurboGFP
Symbol:	Fgfr2
Synonyms:	AU043015; AW556123; Bek; Fgfr-2; Fgfr-7; Fgfr7; KGFR; KGFRTr; sv5
Mammalian Cell Selection:	Neomycin
Vector:	pCMV6-AC-GFP (PS100010)
E. coli Selection:	Ampicillin (100 ug/mL)



[View online »](#)

ORF Nucleotide Sequence:

>MG225124 representing NM_010207
 Red=Cloning site Blue=ORF Green=Tags(s)

TTTTGTAATACGACTCACTATAGGGCGGCCGGGAATTCGTCGACTGGATCCGGTACCGAGGAGATCTGCC
 GCC**CGGATCGCC**

ATGGGATTACCGTCCACGTGGAGATATGGAAGAGGACCAGGGATTGGCACTGTGACCATGGTCAGCTGGG
 GCGCTTCATCTGCCTGGTCTTGGTCACCATGGCAACCTTGTCCCTGGCCCGGCCCTCCTTCAGTTTAGT
 TGAGGATACCACTTTAGAACAGAGAGCCACCAACAAATACCAAATCTCCCAACCAGAAGCGTACGTG
 GTTGCCCCGGGAATCGCTAGAGTTGCAGTGCATGTTGAAAGATGCCGCGGTGATCAGTTGGACTAAGG
 ATGGGGTGCCTTGGGGCCCAACATAGGACAGTGCTTATTGGGGAGTATCTCCAGATAAAAGGTGCCAC
 ACCTAGAGACTCCGGCTCTATGCTTGTACTGCAGCTAGGACGGTAGACAGTGAAACTTGGTACTTCATG
 GTGAATGTCACAGATGCCATCTCATCTGGAGATGATGAGGACGACACAGATAGCTCCGAAGACGTTGTCA
 GTGAGAACAGGAGCAACCAGAGAGCACCCTACTGGACCAACCCGAGAAGATGGAGAAGCGGCTCCACGC
 TGTCCCTGCCCAACACTGTGAAGTCCGCTGTCCGGCTGGGGGAATCCAACGCCACAATGAGGTGG
 TAAAAAACGGGAAGGAGTTAAGCAGGAGCATCGCATTGGAGGCTATAAGGTACGAAACCAGCACTGGA
 GCCTTATTATGGAAGTGTGGTCCCGTCAGACAAGGCAACTACACCTGCCTGGTGGAGAATGAATACGG
 GTCCATCAACCACACCTACCACCTCGATGTCGTTGAACGGTCACCACACCCGGCCCATCCTCCAAGCTGGA
 CTGCCTGCAATGCCTCCACGGTGGTCCGAGGGGATGTGGAGTTTGTCTGCAAGTTTACAGCGATGCC
 AGCCCCACATCCAGTGGATCAAGCACGTGGAAAAGAACGGCAGTAAATACGGGCCTGATGGGCTGCCCTA
 CCTCAAGTCTGAAGGCCCGCGGTGTTAACACCACGGACAAAGAGATTGAGGTTCTCTATATTCGGAAT
 GTAACTTTTGAGGATGCTGGGGAATACGTGCTTGGCGGTAACTCTATCGGGATACCTTTCAGTCTG
 CATGGTTGACAGTTCTGCCAGCGCTGTGAGAGAGAAGGAGATCACGGCTTCCCCAGATTACTGGAGAT
 AGCTATTTACTGCATAGGGGTCTTCTTAATCGCCTGCATGGTGGTGACAGTCATCTTTTGGCGAATGAAG
 ACCACGACCAAGAAGCCAGACTTCAGCAGCCAGCCAGCTGTGCACAAGCTGACCAAGCGCATCCCCCTGC
 GGAGACAGGTAACAGTTTCGGCCGAGTCCAGCTCCTCCATGAACTCCAACACCCCGCTGGTGGAGATAAC
 AACCGCTGTCTCAACAGCGGACACCCCGATGCTAGCAGGGTCTCCGAGTATGAGTTGCCAGAGGAT
 CCAAAGTGGGAATCCCCAGAGATAAGCTGACGCTGGGCAAAACCCTGGGGGAAGTTGCTTCGGGCAAG
 TAGTCATGGCTGAAGCAGTGGGAATCGATAAAGACAAACCAAGGAGCGGTACCCTGGCAGTGAAGAT
 GTTGAAAGATGATGCCACAGAGAAGACCTGTCTGATCTGGTATCAGAGATGGAGATGATGAAGATGATT
 GGGAAACATAAGAACATTATCAACCTCCTGGGGCCTGCACGCAGGATGGACCTCTCTACGTCATAGTTG
 AATATGCATCGAAAGGCAACCTCCGGGAATACCTCCGAGCCCGGAGGCCACCTGGCATGGAGTACTCCTA
 TGACATTAACCGTGTCCCGAGGAGCAGATGACCTTCAAGGACTTGGTGTCTGCACCTACCAGCTGGCT
 AGAGGCATGGAGTACTTGGCTTCCCAAAAATGTATCCATCGAGATTTGGCTGCCAGAAACGTTGGTAA
 CAGAAAACAATGTGATGAAGATAGCAGACTTTGGCCTGGCCAGGGATATCAACAACATAGACTACTATAA
 AAAGACCACAAATGGGCGACTTCCAGTCAAGTGGATGGCTCCTGAAGCCCTTTTGTAGAGTTTACACT
 CATCAGAGCGATGTCTGGTCTTCGGGTGTTAATGTGGGAGATCTTTACTTTAGGGGGCTACCCTACC
 CAGGGATTCCCGTGGAGGAACTTTTAAGCTGCTCAAAGAGGGACACAGGATGGACAAGCCCAACTG
 CACCAATGAACTGTACATGATGATGAGGGATTGCTGGCATGCTGTACCCTCACAGAGACCCACATCAAG
 CAGTTGGTCAAGACTTGGATCGAATTCGACTCTCACAACCAATGAGGAATACTTGGATCTCACCCAGC
 CTCTCGAACAGTATTCTCCTAGTTACCCCGACACAAGGAGCTCTTGTCTTCAGGGGACGATTCTGTGT
 TTCTCCAGACCCATGCCTTATGAACCCTGTCTGCCTCAGTATCCACACATAAACGGCAGTGTAAAAACA

AG**CGGACCG**ACGCGTACGCGGCCGCTCGAG – GFP Tag – GTTTAA

Protein Sequence: >MG225124 representing NM_010207
Red=Cloning site Green=Tags(s)

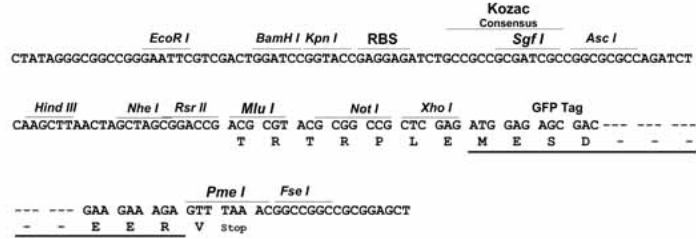
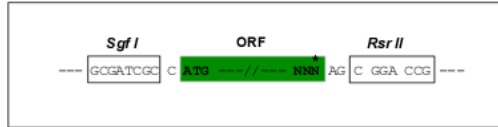
MGLPSTWRYGRGPGIGTVMVSWGRFICLVLTMATLSLARPSFSLVEDTTLEPEEPPTKYQISQPEAYV
VAPGESLELQCMLKDAAVISWTKDGVHLGPNRRTVLIGEYLQIKGATPRDSGLYACTAARTVDSETWYFM
VNVTDAISSGDDEDDTDSSEDDVSENRSNQRAPYWTNTEKMEKRLHAVPAANTVKFRCPAGGNPTPTMRW
LKNGKEFKQEHRIIGGYKVRNQHWSLIMESVVP SDKGNYTCLVENEYGSINHTYHLDVVERSHPHRPILQAG
LPANASTVVGDDVEFVCKVYSDAQPHIQWIKHVEKNGSKYGPDGLPYLKVLKAAGVNTT DKEIEVLYIRN
VTFEDAGEYTCLAGNSIGISFHSAWLTVLPAPVREKEITASPDYLEIAIYICIGVFLIACMVVTVIFCRMK
TTTKKPDFSSQPAVHKLTKRIPLRRQVTVSAESSSSMNSNTPLVRITRRLSSTADTPMLAGVSEYELPED
PKWEFPRDKLTLGKPLGEGCFGQVMAEAVGIDKDKPKEAVTVAVKMLKDDATEKDLSLVSEMEMMKMI
GKHKNIINLLGACTQDGPLYVIVEYASKGNLREYL RARRPPGMEYSYDINRVPEEQMTFKDLVSCTYQLA
RGMEYLASQKCIHRDLAARNVLVTENVMKIADFG LARDINNIDYKKTTNGRLPVKWM APEALFDRVYT
HQSDVWSFGVLMWEIFTLGGSPYGPVVEELFKLLKEGHRMDKPTNCTNELYMMMRDCWHAVPSQRPTFK
QLVEDLDRILTLTTNEEYLDLTQPLEQYSPSPDTRSSC SSGDDSVFSPDPMPYEPCLPQYPHINGSVKT

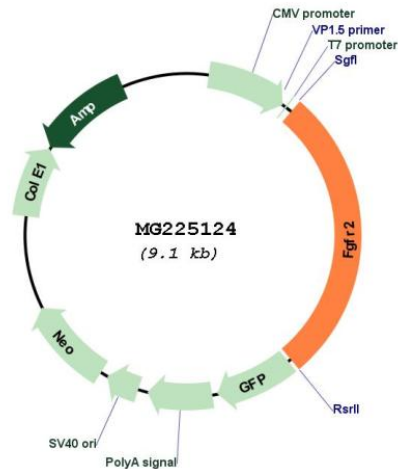
SGPTRRRLE - GFP Tag - V

Restriction Sites: Sgfl-RsrII

Cloning Scheme:

Cloning sites used for ORF Shuttling:



Plasmid Map:


ACCN: NM_010207

ORF Size: 2520 bp

OTI Disclaimer: Due to the inherent nature of this plasmid, standard methods to replicate additional amounts of DNA in *E. coli* are highly likely to result in mutations and/or rearrangements. Therefore, OriGene does not guarantee the capability to replicate this plasmid DNA. Additional amounts of DNA can be purchased from OriGene with batch-specific, full-sequence verification at a reduced cost. Please contact our customer care team at custsupport@origene.com or by calling 301.340.3188 option 3 for pricing and delivery.

The molecular sequence of this clone aligns with the gene accession number as a point of reference only. However, individual transcript sequences of the same gene can differ through naturally occurring variations (e.g. polymorphisms), each with its own valid existence. This clone is substantially in agreement with the reference, but a complete review of all prevailing variants is recommended prior to use. [More info](#)

OTI Annotation: This clone was engineered to express the complete ORF with an expression tag. Expression varies depending on the nature of the gene.

Components: The ORF clone is ion-exchange column purified and shipped in a 2D barcoded Matrix tube containing 10ug of transfection-ready, dried plasmid DNA (reconstitute with 100 ul of water).

- Reconstitution Method:**
1. Centrifuge at 5,000xg for 5min.
 2. Carefully open the tube and add 100ul of sterile water to dissolve the DNA.
 3. Close the tube and incubate for 10 minutes at room temperature.
 4. Briefly vortex the tube and then do a quick spin (less than 5000xg) to concentrate the liquid at the bottom.
 5. Store the suspended plasmid at -20°C. The DNA is stable for at least one year from date of shipping when stored at -20°C.

RefSeq: [NM_010207.2](#), [NP_034337.2](#)

RefSeq Size: 5223 bp

RefSeq ORF: 2523 bp

Locus ID: 14183

UniProt ID: [P21803](#)

Cytogenetics: 7 F3

Gene Summary: Tyrosine-protein kinase that acts as cell-surface receptor for fibroblast growth factors and plays an essential role in the regulation of cell proliferation, differentiation, migration and apoptosis, and in the regulation of embryonic development. Required for normal embryonic patterning, trophoblast function, limb bud development, lung morphogenesis, osteogenesis and skin development. Plays an essential role in the regulation of osteoblast differentiation, proliferation and apoptosis, and is required for normal skeleton development. Promotes cell proliferation in keratinocytes and immature osteoblasts, but promotes apoptosis in differentiated osteoblasts. Phosphorylates PLCG1, FRS2 and PAK4. Ligand binding leads to the activation of several signaling cascades. Activation of PLCG1 leads to the production of the cellular signaling molecules diacylglycerol and inositol 1,4,5-trisphosphate. Phosphorylation of FRS2 triggers recruitment of GRB2, GAB1, PIK3R1 and SOS1, and mediates activation of RAS, MAPK1/ERK2, MAPK3/ERK1 and the MAP kinase signaling pathway, as well as of the AKT1 signaling pathway. FGFR2 signaling is down-regulated by ubiquitination, internalization and degradation. Mutations that lead to constitutive kinase activation or impair normal FGFR2 maturation, internalization and degradation lead to aberrant signaling. Over-expressed FGFR2 promotes activation of STAT1.[UniProtKB/Swiss-Prot Function]