

Product datasheet for **MG225123**

Tbx18 (NM_023814) Mouse Tagged ORF Clone

Product data:

Product Type:	Expression Plasmids
Product Name:	Tbx18 (NM_023814) Mouse Tagged ORF Clone
Tag:	TurboGFP
Symbol:	Tbx18
Synonyms:	2810012F10Rik; 2810404D13Rik
Mammalian Cell Selection:	Neomycin
Vector:	pCMV6-AC-GFP (PS100010)
E. coli Selection:	Ampicillin (100 ug/mL)



[View online »](#)

ORF Nucleotide Sequence:

>MG225123 representing NM_023814
 Red=Cloning site Blue=ORF Green=Tags(s)

TTTTGTAATACGACTCACTATAGGGCGGCCGGAATTCGTCGACTGGATCCGGTACCGAGGAGATCTGCC
 GCC**GCGATCGCC**

ATGGCGGAGAAGCGGAGGGGCTCACCGTGCAGCATGCTAAGCCTCAAGGCGCACGCTTCTCTGTGGAGG
 CACTGATCGGCGCCGAGAAGCAGCAACAGCTTCAAAGAAGCGGAGAAAGCTGGCCACGGAAGAGCGGC
 GGGGGCGGTGGAAGAGCGCAGGCTGCAGCCGTAGCGGAGGCGGGGGAGTACGGTGCTCGGAGGCCGAC
 GAAGAAGCGGCTGCCCGCCGCCGAGCCGGGGCGCGTCCGGGCCAGCGGGAGCTGCGCGGACGCGG
 AGCGGAGCTGTGGCTCCCGCGGAGCGGGCGGACGCTGTGAGGATGGCTTCTGACGGGCGCTCCCGTT
 GGCATCCCGGGAGGCTCCCGAAAGGGTCTCCCGTACCTGGCTTGGCACGACCGGGGACCCCGTGCC
 GCGCCGACGGCCCGAGAGTAGATCTGCAAGGAGCGGAGCTCTGGAAGCGCTTTCACGAAATAGGCACCG
 AGATGATCATACCAAAGCCGGCAGGCGCATGTTCCAGCAATGCGGGTGAAGATCTCCGGATTAGACCC
 TCACCAGCAATATTACATTGCCATGGATATTGTGCCGGTGGACAACAAGAGATACAGGTATGTTTACCAT
 AGCTCTAAGTGGATGGTGGCAGGAAATGCTGATTCGCCGGTGCCACCCAGAGTATACATTATCCAGACT
 CACCGGCTCTGGGGAGACTTGGATGAGACAAGTCATCAGCTTCGACAAGCTGAAACTTACCAACAATGA
 GCTGGATGACCAAGGCCATATCATTCTTATTCTATGCACAAATACCAACCACGTGTGCATGTCATCCGT
 AAAGATTGCGGAGATGATCTGTCCCATCAAGCTGTCCATCAGGAGAGGGAGTGAAGGCATTCTCT
 TTCCAGAAACCGTCTTCACAACTGCTACTGCCTATCAGAATCAGCAGATTACTCGCTTAAGATAGACAG
 GAATCCATTTGCCAAAGTTTCCGAGACTCTGGGAGAACAGAATGGGTTTGAAGCTCTGGTGGAGTCA
 TACGCATTCTGGAGGCCATCACTACGGACTCTCACCTTGAAGATATCCCTGGAATCCCAAAGCAAGGCA
 ACACAAGTTCTCAGCTCTGCTCAAGGCACTGGGAATGCTGTCCCTGCTACACATCCTCACCTGTTGTC
 TGGATCCTCTTGCTCCTCTCCTGCCTTCCATCTGGGGCCGAACACCAGCCAGCTGTGTAGTCTGGCTCCA
 GCTGACTATTCGGCTGTGCCGTTTCCGCTTCCCTCAATCGATACAGCACATCCTTGGCAGAGACCT
 ACAGCAGGCTTACCAACCAGAGCAGTGAGACCTTGGCCACCTAGGACTCCTTCTACGTGAGTGTGAG
 CAGCAACCCGTCTGTGAACATGTCCATGGGCGGCACTGATGGGGACACCTTACGTGCCACAGACCAGC
 CTGTCCATGCAGATTTAGGAATGTCCCTCAACTTCACTACATCATGCCATCGCCGTCCGGCAATGCCT
 TTGCTGCTAACCCAGACCACCAGAGTCTTACAACACCTCCGATTGCACAGTCCCTGTGCCTTGTATGG
 ATATAACTTCTCCACATCCCCAAACTGGCTGCCAGTCTGAGAAAATTGTTTCTCCAAAGGAAGTTTC
 TTGGGGTCTCACCAAGTGGGACCATGACTGATCGTCAGATGTTGCCCTGTGGAAGGAGTGCACCTGC
 TCAGCAGTGGGGCCAGCAGAGTTTCTTACTCCAGGACCTAGGAAGTTTAACTCTGCCATCTTCTCA
 AGTGTCTGCACATATGGTC

ACGCGTACGCGGCCGCTCGAG - GFP Tag - GTTTAA

Protein Sequence:

>MG225123 representing NM_023814
 Red=Cloning site Green=Tags(s)

MAEKRRGSPCSMLSLKAHAFSVEALIGAEEKQQQLQKRRRLATEEAAGAVEDAGCSRSGGAGEYGCSEAD
 EEAAAPPPAAGAASGPASCADAERSCGSRGAAGSCEDEGFLQGASPLASPGGSPKGSVPVGLARPGTLP
 APQAPRVDLQGAELWKRFEIGTEMIITKAGRRMFPAMRVKISGLDPHQYYIAMDIVPVDNKRYRYVYH
 SSKWMVAGNADSPVPPRYIHPDSPASETWMRQVISFDKLLKLNELDDQGHIIILHSMHKYQPRVHVIR
 KDCGDDLSPKIPVPSGEGVKAFSFPETVFTTAYQNNQITRLKIDRNPFAGGFRDSGRNRMGLEALVES
 YAFWRPSLRTLTFEDIPGIPKQNGNTSSSALLQGTGNVAPATHPHLLSGSSCSPAFHLGPNTSQLCSLAP
 ADYSACARSLALNRYSTSLAETYSRLTNQSSSETFAPRTPSYVSVSNPVSVMMSMGTDGDTFSCPQTS
 LSMQISGMSPQLQYIMPSPGNFAANQTHQSSYNTFRLHSPCALYGNFSTSPKLAASPEKIVSSQGSF
 LGSSPSGTMTRQMLPPVEGVHLLSSGGQQSFFDSRTLGSLLTPSSQVSAHMV

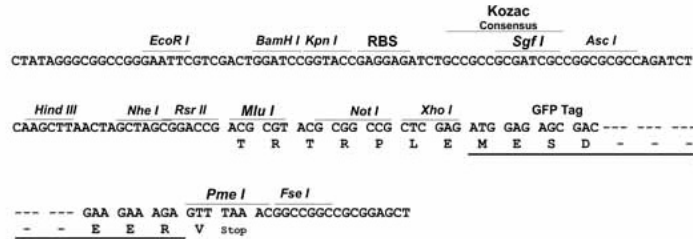
TRTRPLE - GFP Tag - V

Restriction Sites:

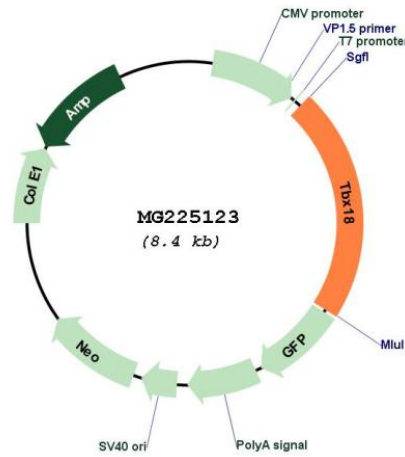
SgfI-MluI

Cloning Scheme:

Cloning sites used for ORF Shutting:



Plasmid Map:



ACCN: NM_023814
 ORF Size: 1839 bp

OTI Disclaimer:	The molecular sequence of this clone aligns with the gene accession number as a point of reference only. However, individual transcript sequences of the same gene can differ through naturally occurring variations (e.g. polymorphisms), each with its own valid existence. This clone is substantially in agreement with the reference, but a complete review of all prevailing variants is recommended prior to use. More info
OTI Annotation:	This clone was engineered to express the complete ORF with an expression tag. Expression varies depending on the nature of the gene.
Components:	The ORF clone is ion-exchange column purified and shipped in a 2D barcoded Matrix tube containing 10ug of transfection-ready, dried plasmid DNA (reconstitute with 100 ul of water).
Reconstitution Method:	<ol style="list-style-type: none">1. Centrifuge at 5,000xg for 5min.2. Carefully open the tube and add 100ul of sterile water to dissolve the DNA.3. Close the tube and incubate for 10 minutes at room temperature.4. Briefly vortex the tube and then do a quick spin (less than 5000xg) to concentrate the liquid at the bottom.5. Store the suspended plasmid at -20°C. The DNA is stable for at least one year from date of shipping when stored at -20°C.
RefSeq:	NM_023814.4 , NP_076303.3
RefSeq Size:	4679 bp
RefSeq ORF:	1842 bp
Locus ID:	76365
UniProt ID:	Q9EPZ6
Cytogenetics:	9 47.06 cM
Gene Summary:	Acts as transcriptional repressor involved in developmental processes of a variety of tissues and organs, including the heart, the coronary vessels, the ureter, and the vertebral column. Required for embryonic development of the sino atrial node (SAN) head area. [UniProtKB/Swiss-Prot Function]