

Product datasheet for **MG225094**

Fnbp1 (NM_001177649) Mouse Tagged ORF Clone

Product data:

Product Type:	Expression Plasmids
Product Name:	Fnbp1 (NM_001177649) Mouse Tagged ORF Clone
Tag:	TurboGFP
Symbol:	Fnbp1
Synonyms:	1110057E06Rik; 2210010H06Rik; FBP1; Fbp17
Mammalian Cell Selection:	Neomycin
Vector:	pCMV6-AC-GFP (PS100010)
E. coli Selection:	Ampicillin (100 ug/mL)



[View online »](#)

ORF Nucleotide Sequence:

>MG225094 representing NM_001177649
 Red=Cloning site Blue=ORF Green=Tags(s)

TTTTGTAATACGACTCACTATAGGGCGGCCGGGAATTCGTCGACTGGATCCGGTACCGAGGAGATCTGCC
 GCC**GCGATCGCC**

ATGAGCTGGGCACTGAGCTCTGGGATCAGTTTGACAACCTGGAAAAACATACACAGTGGGGAATCGATA
 TTCTTGAGAAATACATCAAGTTTGTCAAGGAGAGGACGGAGATTGAGCTCAGCTATGCCAAGCAACTCAG
 GAATCTTTCAAAGAAATACCAACCTAAGAAGAACTCGAAGGAAGAGGAGGAGTACAAGTACACGGCTTGC
 AAAGCCTTTCTTCCACCCTGAATGAGATGAATGACTACGCCGGGCAGCAGAGGTCATCTCTGAGAACA
 TGACGTCACAGATCACGGTGGACCTGATGCGCTACGTTCCAGGAGCTGAAGCAGGAGAGGAAATCGAACTT
 CCATGATGGACGGAAGGCTCAGCAGCACATAGAAACGTGTTGGAAGCAACTGGAGTCAAGTAAAGAGGAGG
 TTTGAGCGGGACTGTAAAGAACCCGACCGGCACAGCAGTACTTCGAGAAAATGGACGCTGACATCAACG
 TGACCAAGCGGATGTGAAAAGGCACGACAACAAGCTCAGATACGCCAGCAAATGGCAGAGGACAGCAA
 AGCAGATTACTCCTTAATCCTGCAGAGATTCACCAGGAGCAATGGGAATACTACCATACCCACATCCCC
 AACATCTTCCAGAAAATACAAGAGATGGAGGAGAGGCGGATTGTGCGTATTGGGGAGTCCATGAAGACGT
 ACGCAGAGGTGGACCGGCAGGTGATACCCATCATCGGGAAGTGCCTGGACGGGATAGTGAAGCGGCCGA
 GTCTATCGACCAGAAAAACGACTCCCAGCTGGTCTAGAACCTATAAGTCAGGATTCGAGCCTCCTGGA
 GACATTGAATTCGAAGATTACACACAGCCAATGAAACGCACAGTGTGAGCAACAGCCTTCCAGCTCCA
 AAGAAGGCAAGCCTGAGCTCAGATTTGGCGGCAAGTCCAGAGGCAAGCTCTGGCCATTATCAAGAAAA
 CAAGGGTGTACACCAGAAGACTTCAGCAACTTCCCACCTGAGCAGAGAAGGAAAAAACTACAACAGAAA
 GTTGACGATCTCAATAGAGAGATACAGAAGGAGACGGACCAGAGAGATGCCATCACAAAATGAAAGATG
 TGTACCTAAAGAACCCTCAGATGGGAGACCCAGCCAGCCTGGACCAGAAGCTCACCGAAGTACCCAGAA
 CATAGAGAAACTGCGGCTGGAGGCTCAGAAGTTTGAGGCCTGGCTGGCTGAGGTAGAAGGCAGACTCCCA
 GCTCGGAGTGAGCAGGCACGCCGCGCAGAGTGGACTGTATGATGGCCAGACACACCAGACGGTCACTAACT
 GTGCCAGGACCGGGAGAGCAGCCAGATGGTAGTTACACAGAGGAGCAAAGCCAGGAGAGCGAGACAAA
 GGTCTGGCCCCGGATTCGACGATGAATTTGATGATGAGGAGCCGCTTCCAGCCATAGGGACCTGCAAG
 GCCCTCTACATTTGAAGGTGAGAACGAAGGCACCATTTCCGTAGTTGAAGGAGAGACGCTGAGCGTGA
 TTGAAGAGGACAAAGCGATGGGTGGACTCGCATCCGCAGAAATGAAGACGAGGAGGGTTACGTCCCCAC
 TTCTACGTCGAAGTCTATTTAGACAAAAACGCCAAAGTTCC

ACGCGTACGCGGCCGCTCGAG – GFP Tag – GTTTAA

Protein Sequence:

>MG225094 representing NM_001177649
 Red=Cloning site Green=Tags(s)

MSWGTTELWDQFDNLEKHTQWIDILEKYIKFVKERTEIELSYAKQLRNL SKKYQPKKNSKEEEEYKYTAC
 KAFLSTLNEMNDYAGQHEVISENMTSQITVDLMRYVQELKQERKSNFHDGRKAQQHIETCWKQLESSKRR
 FERDCKEADRAQQYFEKMDADINVTKADVEKARQQAQIRQMAEDSKADYSLILQRFNQEQWEYHHTHIP
 NIFQKIQEMEERRIVRIGESMKTYAEVDRQVIPIIGKCLDGIKAAESIDQKNSQLVVEAYKSGFEPFG
 DIEFEDYTQPMKRTVSDNSLSSSKEGKPELRFGGKSRGKLPWFIKKNKGVTPEDFSNFPPEQRRKLQKQ
 VDDLNREIQKETDQRDAITKMKDVYLNPNQMGDPASLDQKLTEVTQNIKLRLEAQKFEAWLAEVEGRLP
 ARSEQARRQSGLYDGQTHQVTNCAQDRESSPDGSYTEEQSQESEHKVLPDFDDEFDDEEPLPAIGTCK
 ALYTFEQNEGTSVVEGETLSVIEEDKGDGWTRIRRNEDEEGYVPTSYVEVYLDKNAKGS

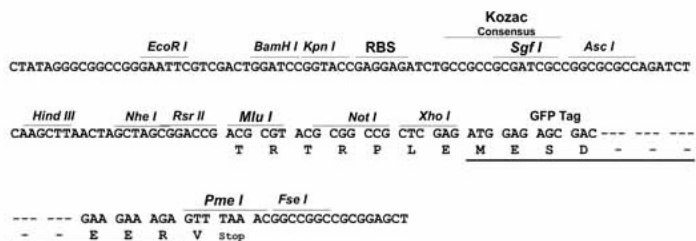
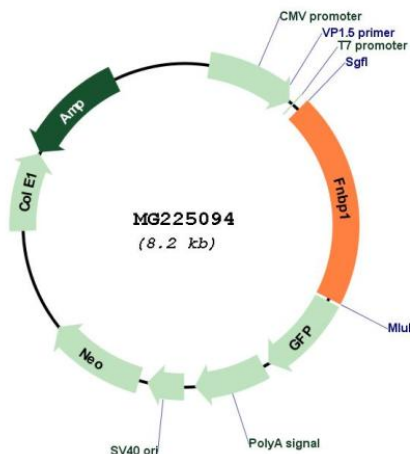
TRTRPLE – GFP Tag – V

Restriction Sites:

Sgfl-MluI

Cloning Scheme:

Cloning sites used for ORF Shutting:

**Plasmid Map:**

ACCN:	NM_001177649
ORF Size:	1653 bp
OTI Disclaimer:	The molecular sequence of this clone aligns with the gene accession number as a point of reference only. However, individual transcript sequences of the same gene can differ through naturally occurring variations (e.g. polymorphisms), each with its own valid existence. This clone is substantially in agreement with the reference, but a complete review of all prevailing variants is recommended prior to use. More info
OTI Annotation:	This clone was engineered to express the complete ORF with an expression tag. Expression varies depending on the nature of the gene.
Components:	The ORF clone is ion-exchange column purified and shipped in a 2D barcoded Matrix tube containing 10ug of transfection-ready, dried plasmid DNA (reconstitute with 100 ul of water).
Reconstitution Method:	<ol style="list-style-type: none">1. Centrifuge at 5,000xg for 5min.2. Carefully open the tube and add 100ul of sterile water to dissolve the DNA.3. Close the tube and incubate for 10 minutes at room temperature.4. Briefly vortex the tube and then do a quick spin (less than 5000xg) to concentrate the liquid at the bottom.5. Store the suspended plasmid at -20°C. The DNA is stable for at least one year from date of shipping when stored at -20°C.
RefSeq:	NM_001177649.1 , NP_001171120.1
RefSeq Size:	4548 bp
RefSeq ORF:	1656 bp
Locus ID:	14269
UniProt ID:	Q80TY0
Cytogenetics:	2 B
Gene Summary:	Required to coordinate membrane tubulation with reorganization of the actin cytoskeleton during the late stage of clathrin-mediated endocytosis. Binds to lipids such as phosphatidylinositol 4,5-bisphosphate and phosphatidylserine and promotes membrane invagination and the formation of tubules. Also enhances actin polymerization via the recruitment of WASL/N-WASP, which in turn activates the Arp2/3 complex. Actin polymerization may promote the fission of membrane tubules to form endocytic vesicles. May act as a link between RND2 signaling and regulation of the actin cytoskeleton. May be required for the lysosomal retention of FASLG/FASL (By similarity).[UniProtKB/Swiss-Prot Function]