

## Product datasheet for **MG225042**

### Polr2h (NM\_145632) Mouse Tagged ORF Clone

#### Product data:

**Product Type:** Expression Plasmids  
**Product Name:** Polr2h (NM\_145632) Mouse Tagged ORF Clone  
**Tag:** TurboGFP  
**Symbol:** Polr2h  
**Synonyms:** MGC8248; MGC103049  
**Mammalian Cell Selection:** Neomycin  
**Vector:** pCMV6-AC-GFP (PS100010)  
**E. coli Selection:** Ampicillin (100 ug/mL)  
**ORF Nucleotide Sequence:** >MG225042 representing NM\_145632  
Red=Cloning site Blue=ORF Green=Tags(s)

TTTTGTAATACGACTCACTATAGGGCGGCCGGAATTCGTCGACTGGATCCGGTACCGAGGAGATCTGCC  
GCC**CGATCGCC**

ATGGCGGGCATCCTGTTTCGAGGATATTTTCGATGTGAAAGACATCGACCCAGAAGGCAAGAAATTTGACC  
GAGTATCCCGGCTGCACTGTGAGAGTGAATCTTCAAGATGGACCTCATCTTAGATGTAACATTCAGAT  
TTACCTGTGGACTTAGGTGACAAGTCCGGTTGGTTATAGCTAGTACTTTGTATGAAGATGGTACCTTG  
GATGATGGTGAATACAACCCACAGATGACAGGCCCTCCAGGGCTGACCAGTTTGAGTATGTCATGTATG  
GGAAAGTGTACAGGATCGAAGGGGATGAGACCTCCACTGAAGCAGCCACACGCCTCTCTGCGTACGTGTC  
CTATGGGGCCTGCTCATGAGGCTTCAGGGTATGCCAACAACCTGCATGGATTTGAGGTGGACTCCAGA  
GTTTATCTGCTGATGAAGAAGCTGGCCTC

**ACGCGT**ACGCGGCCGCTCGAG - GFP Tag - GTTTAA

**Protein Sequence:** >MG225042 representing NM\_145632  
Red=Cloning site Green=Tags(s)

MAGILFEDIIDVVDKIDPEGKKFDRVSRSLHCESESFKMDLILDVNIQIYPVDLGDKFRLLVIASSTLYEDGTL  
DDGEYNPTDDRPSRADQFEYVMYGVYRIEGDETSTEAATRLSAYVSYGGLLMRLQGDANNLHGFEVDSR  
VYLLMKKLAF

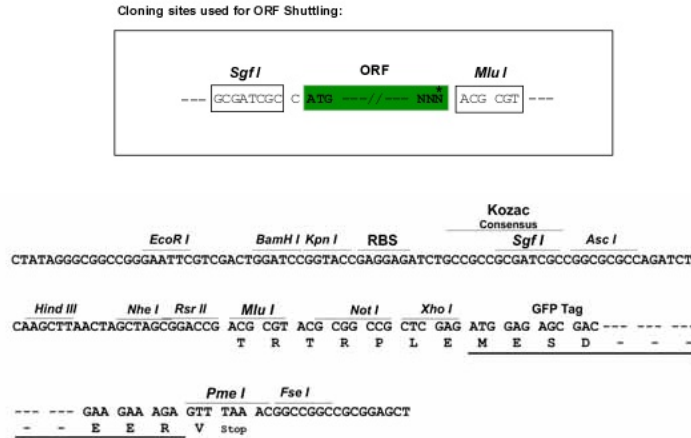
**TRTRPLE** - GFP Tag - V

**Restriction Sites:** SgfI-MluI

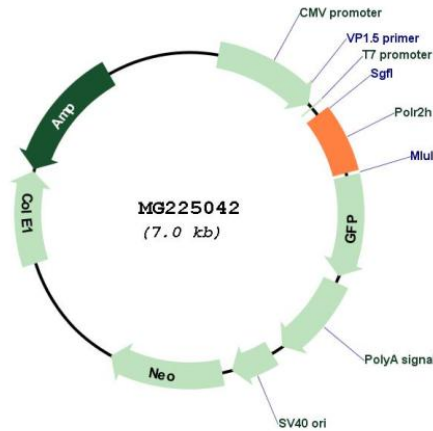


[View online »](#)

Cloning Scheme:



Plasmid Map:



ACCN: NM\_145632

ORF Size: 450 bp

OTI Disclaimer: The molecular sequence of this clone aligns with the gene accession number as a point of reference only. However, individual transcript sequences of the same gene can differ through naturally occurring variations (e.g. polymorphisms), each with its own valid existence. This clone is substantially in agreement with the reference, but a complete review of all prevailing variants is recommended prior to use. [More info](#)

OTI Annotation: This clone was engineered to express the complete ORF with an expression tag. Expression varies depending on the nature of the gene.

<b>Components:</b>	The ORF clone is ion-exchange column purified and shipped in a 2D barcoded Matrix tube containing 10ug of transfection-ready, dried plasmid DNA (reconstitute with 100 ul of water).
<b>Reconstitution Method:</b>	<ol style="list-style-type: none"><li>1. Centrifuge at 5,000xg for 5min.</li><li>2. Carefully open the tube and add 100ul of sterile water to dissolve the DNA.</li><li>3. Close the tube and incubate for 10 minutes at room temperature.</li><li>4. Briefly vortex the tube and then do a quick spin (less than 5000xg) to concentrate the liquid at the bottom.</li><li>5. Store the suspended plasmid at -20°C. The DNA is stable for at least one year from date of shipping when stored at -20°C.</li></ol>
<b>RefSeq:</b>	<u>NM_145632.2, NP_663607.1</u>
<b>RefSeq Size:</b>	787 bp
<b>RefSeq ORF:</b>	453 bp
<b>Locus ID:</b>	245841
<b>UniProt ID:</b>	<u>Q923G2</u>
<b>Cytogenetics:</b>	16 B1
<b>Gene Summary:</b>	DNA-dependent RNA polymerase catalyzes the transcription of DNA into RNA using the four ribonucleoside triphosphates as substrates. Common component of RNA polymerases I, II and III which synthesize ribosomal RNA precursors, mRNA precursors and many functional non-coding RNAs, and small RNAs, such as 5S rRNA and tRNAs, respectively (By similarity). [UniProtKB/Swiss-Prot Function]