

Product datasheet for **MG224996**

Cass4 (NM_001033538) Mouse Tagged ORF Clone

Product data:

Product Type:	Expression Plasmids
Product Name:	Cass4 (NM_001033538) Mouse Tagged ORF Clone
Tag:	TurboGFP
Symbol:	Cass4
Synonyms:	F730031O20Rik; RP23-228E2.3
Mammalian Cell Selection:	Neomycin
Vector:	pCMV6-AC-GFP (PS100010)
E. coli Selection:	Ampicillin (100 ug/mL)



[View online »](#)

ORF Nucleotide
Sequence:

>MG224996 representing NM_001033538
Red=Cloning site Blue=ORF Green=Tags(s)

TTTTGTAATACGACTCACTATAGGGCGGCCGGGAATTCGTCGACTGGATCCGGTACCGAGGAGATCTGCC
GCCCGGATCGCC

ATGAGAGGCCACCAGCATCAGAGAGGGTGCGCCAAGACCTGTTGGCCAGGGCACTCTACGACAACCATG
CTGATTGCTCCGACGAGCTTGCTTCTCCAGAGGGGACATCCTGACCATCGTGGAACAAAATGTGCCAGA
AAGCGAGGGCTGGTGGAGGTGTCTGCTCCACGGGAGGCAAGGCCTGGCTCCAGCCAACCGCTCCAAGTC
CTCAGAGAGACCCTGCAGACAGACCCTGTCCCCTGCTCCGAGAGGGCCAGACACAGATCTCACCAGCT
CCGGGGCGCCTTACCAGGTGCAGGACTTGATCTCCCCGCCACCCAGGGACCTGTGTATGAACCAATGAG
GAGCTGGTGGAGGGGCCGTACCAGCGACTGCCAAGTCTACGAATGCCTGAGTCACCTTCCAGTGCC
AGGATCATCTGTAAAAGACGCTGAGCTCCCCAAGCAGGCCCTCTGTGCTTCCAGACCGACGAGGG
CCTCGTTGCCGACTTCTTCCCAGGTGTATGACGTGCCTGTCCAGAGGCAGGGCTTCTCAACCCCTTGA
GAGGCTGGAGAAGCAGCAGTTCTATGACATACCCACCAGCTCCCAGAAGGCTCTGCTCCACTCCTCCACC
AGCCAGGGACGGGATGTTACATTGGCACCGACAATGGCCTTCAGACAAGGTGGTGGCTATAACCCGTTAT
CCAGCCCTCAGAAAGTCAGAACGGATTATGACACTCCGGTGTGCTGGAAAAGGCCGATGTCAGAAATGT
GTCTATGACCAGCTTACCAAAGACTCAGGTTCCAGAGCCATTCCAGGCTCCTCTGCTGTCCACTGGA
GCTGTGGCCCTCTCCCCACAGCTGGGGAACACTGTGCAGAGAAAAACAGCCTCCAGAAGAACCTACCT
ATGCCTTCCCAACGTCCAGGGACCCACTGCCCTCTGATGCAGGTGGCAGCTACAAGTCCCTTCCAGGTT
TCTTATCCCAGAGTGGAGCAACAGAACCCATGCCTAACATTTATGACACCCCTAAAGCCATGCAGGGT
GTGTCTCATAACGCCCTAAAGCCATGCAGGGTGTGTCTCTGGCTGGAAGGAGCTGGAGAGAGGCAGAG
TGTTGCCAGCTCAGACAGCAGGGCTAGTGTGGTGTCTTCCCTGCTCCTCCATATCCATGGACTCCTCCTCT
GGCTCCTCCTCAGAGGACTCCGTCAAGGAGCTATGGATGGACGTGGACTTTGCAAAGGAGACAGCAGTGT
CTCTGCAACACAAAGTGGCCAGCTCGGCGGCCGGCCTGCTGCTCTTTGTAAGCAGGACTTGGAGGTTCAA
AGACTCCTTGAAACCAACATCCACAGAATCCGCAGGGCCGCTGACCACGTAGAGGAATCTGTAAGAGAA
TTTCTGGATTTTGCCCAAGGGTGGTGGGACCGCTTGAATCTCACAGACAGCTACCTTCCAGGCTAGAA
TTAGAGATCAGCTCCAGACAATCTTAGCTCCTACCAGACACTGCTGGATGCCAAGGGAAGCTTGGACCG
CTGCAATTGGTCCCTGGAAGTCTTGTGACAGACAAAGTCCAAAACAGCCTGGATGACCTGGAGAGGTTT
GTCGCCACTGCACGAATAGTTCAGAAGACGTC AAGAGGTTTACCTCCATCGTCATTGCCAATGGGAAGC
TCCTTTTTAAACAGAAGTGTGAGAAAGGAGAGATGGACTTGAAGTGTGAGAGATGCATCCGGCCTCCCCA
AAGAGAAACTGAGTCCTACCAAGAGAGCAGCCCTTCGACAGGCAACCGCAACTGAACACTCCTTTGAA
CTAGCAAGGAAAAACAGAGTGAATGTCTGTTGGCAGGTAAGTCAGGGTGACAAACAGTACACAGGGGACT
TCATCTGTTACCTGAACTGGTCATCACTGAGGCAGATGCTGGCATCATGTGCCTGTAGAAATGTGCACCT
GCACGTTTCATGGGAAGCCATAGGA

ACGCGTACGCGGCCGCTCGAG - GFP Tag - GTTTAA

Protein Sequence: >MG224996 representing NM_001033538
 Red=Cloning site Green=Tags(s)

MRGTSIREGAPKTL LARALYDNHADCSDELAFSRGDILTIVEQNVPESEGWWRCLLHGRQGLAPANRLQV
 LRETPADRPCPLLPRGPDTDLTSSGAPYQVQDLISPPQGPVYEPMRSWVEGSPATAQVYELPESPSSA
 RIICEKTL SFPKQALSVLPRPTRASLPTLPSQVYDVPVQRQGFSTLERLEKQQFYDIPTSSQKALLHSST
 SQGRDVTLAPTMAFRQGGGYNPLSSPQKSERIHDTPLVLEKADVRNVSMSTFTKDSGSRAIPGSSAVHTG
 AVALSPQLGNTVQRKNSLPEEPTYAFPTSRDPLPSDAGGSYKVP SRFLIPRVEQQNTMPNIYDTPKAMQG
 VSHNAPKAMQGVSLAGKELERGREAPENSPWISGQTSFLSPDSRDL SVASSDSRASVSSCSSISMDSS
 GSSSEDSVKELWMDVDFAKETAVSLQHKVASSAAGLLLFVSRTRWRFKDSLETNIHRIRRAADHVEESVRE
 FLDFAQVGGTACNL TDSYLQARIRDQLQTISSSYQTL L DAKGSLDRCNWSLEVLVTDKVNLSLDDLERF
 VATARIVPEDVKRFTSIVIANGKLLFKQNCCKGEMDLKCERCIRPPQRETESYQESSPFDRQPTTEHSFE
 LARKNRVNVVCWQVSQGDQYTGDFICYLNWSSLRQMLASCACRNVHLHVHGEAIG

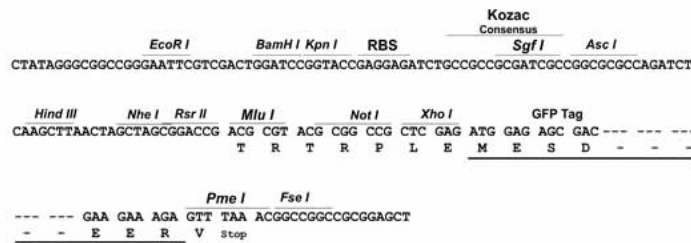
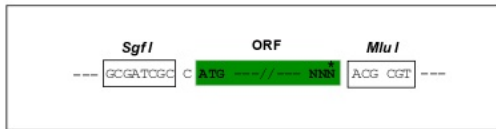
TRTRPLE - GFP Tag - V

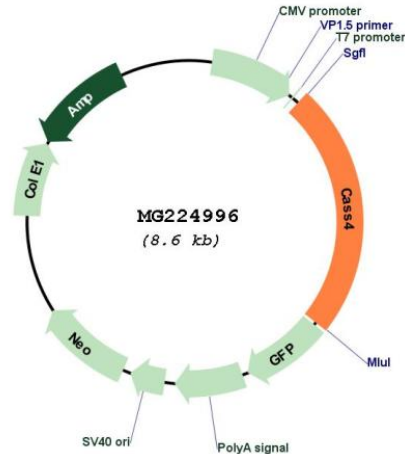
Restriction Sites:

SgfI-MluI

Cloning Scheme:

Cloning sites used for ORF Shuttling:



Plasmid Map:


ACCN: NM_001033538

ORF Size: 2055 bp

OTI Disclaimer: The molecular sequence of this clone aligns with the gene accession number as a point of reference only. However, individual transcript sequences of the same gene can differ through naturally occurring variations (e.g. polymorphisms), each with its own valid existence. This clone is substantially in agreement with the reference, but a complete review of all prevailing variants is recommended prior to use. [More info](#)

OTI Annotation: This clone was engineered to express the complete ORF with an expression tag. Expression varies depending on the nature of the gene.

Components: The ORF clone is ion-exchange column purified and shipped in a 2D barcoded Matrix tube containing 10ug of transfection-ready, dried plasmid DNA (reconstitute with 100 ul of water).

Reconstitution Method:

1. Centrifuge at 5,000xg for 5min.
2. Carefully open the tube and add 100ul of sterile water to dissolve the DNA.
3. Close the tube and incubate for 10 minutes at room temperature.
4. Briefly vortex the tube and then do a quick spin (less than 5000xg) to concentrate the liquid at the bottom.
5. Store the suspended plasmid at -20°C. The DNA is stable for at least one year from date of shipping when stored at -20°C.

RefSeq: [NM_001033538.2](#), [NP_001028710.1](#)

RefSeq Size: 3731 bp

RefSeq ORF: 2058 bp

Locus ID: 320664

Cytogenetics: 2 H3

Gene Summary: Docking protein that plays a role in tyrosine kinase-based signaling related to cell adhesion and cell spreading. Regulates PTK2/FAK1 activity, focal adhesion integrity, and cell spreading (By similarity).[UniProtKB/Swiss-Prot Function]