

## Product datasheet for **MG224990**

### Wasf2 (NM\_153423) Mouse Tagged ORF Clone

#### Product data:

Product Type:	Expression Plasmids
Product Name:	Wasf2 (NM_153423) Mouse Tagged ORF Clone
Tag:	TurboGFP
Symbol:	Wasf2
Synonyms:	AW742646; D4Ertd13e; WAVE2
Mammalian Cell Selection:	Neomycin
Vector:	pCMV6-AC-GFP (PS100010)
E. coli Selection:	Ampicillin (100 ug/mL)



[View online »](#)

**ORF Nucleotide Sequence:**

>MG224990 representing NM\_153423  
 Red=Cloning site Blue=ORF Green=Tags(s)

TTTTGTAATACGACTCACTATAGGGCGGCCGGAATTCGTCGACTGGATCCGGTACCGAGGAGATCTGCC  
 GCCCGCATCGCC

ATGCCGTTAGTAACAGGAACATCGAGCCAAGGCACCTGTGCCGTGACAGCTTGCCTAGCGATACAAGCG  
 AGCTGGAATGCAGGACCAACATCACCTGGCAAATGTCATCCGACAGCTGGGCAGCTGAGTAAGTATGC  
 AGAGGACATTTTCGGAGAGATTTGTAAGTCAAGTGCCTTTGCCTCCCGAGTAAACTCCCTTGCTGAG  
 CGGGTTGACCGAGTACAAGTAAAGTCACTCAGCTGGATCCCAAGGAAGAAGAAGTGTACTACAAGGAA  
 TCAACTCGGAAGGCCTTCAGAAGTCTACCACCAAGACCAGAAGCTCTTTGACAGGAACTCTCTCCC  
 GGTGCCGCTCTTAGAGACCTATAACAGCTGTGACGCTCTCCCTCTTAAACAATCTCAGTCCTTACAGG  
 GACGATGAAAAAGAGGCACTCAAATCTACACCAACCCCTCATACTTCTTTGATCTTTGGAAGGAGAAGA  
 TGCTGCAGGACACCAAGGATATCATGAAAGAGAAGAGAAAGCATAGGAAAGAAAAGATAATCCAAA  
 TAGAGGGAAATGTGAACCCACGTAATCAAGACACGCAAGGAAGAGTGGGAGAAGATGAAAATGGGACAA  
 GAATTTGTAGAGTCCAAGGAGAGCTGGGGCTTCTGGGTATTCTGTCACCTTGGTGTACCAAGATGGCA  
 GCATTGGCTCTGTTGAAAATGTGGATGCGGCCAGCTACCCACCACCACAGTCGGACTCTGCCTCCTC  
 ACCTTCCCCTTATTCTGAAGACAATTGCCTCCCCCGCCAGCAGAATTGAGTACCCTGCAGACAAC  
 CAAAGAGGATCTGTCTGGCTGGACCCAAAAGAACCAGCATGGTCAGCCCAAGCCATCCACCCCAAGCTC  
 CTCCTCTGAGCTCTCCGCGAGTCCCAAGCCTGGCTTCCGCTCCTCCACCTGCCCTCCACCTCCACCTCC  
 CATGAGTGTGCCACCTCCACTACCATCGATGGGATTCGGGTCTCCTGGGACCCCTCCACCCCAATCACT  
 CCATCTTCCCTCCTCACCTGATTTGCTGCTCCTCCACCACCTCCCCACCACCAGCAGCTGACTACC  
 CAATGCCACCACCTCTTTGTCCCAACCGTCTGGAGGTCTCCTCCGCTCCTCCTCCCTCCCCCTCCCC  
 AGGGCCCCCGCCTCTCCCTTCAGCGGTGCTGATGGCCAGCCTGCTGCACCACCACCACCACCTTCT  
 GAGGCCACCAAGCCAAAGTCTTATTGCCTGCTGTGAGTACGCGCGCAGTGACCTGCTTCTGCCATTC  
 GCCAAGGCTTTCAGTGCGAAGGGTTGAAGAGCAACGGGAGCAAGAGAAGCGTGTGTGGTGGGCAATGA  
 TGTGGCCACCATCTGTCCCGTCGGATCGCTGTTGAGTACAGCGACTCGGAAGATGATTCTTCTGAATTT  
 GATGAAGACGACTGGTCGGAT

ACGCGTACGCGGCCGCTCGAG - GFP Tag - GTTTAA

**Protein Sequence:**

>MG224990 representing NM\_153423  
 Red=Cloning site Green=Tags(s)

MPLVTRNIEPRHLCRQTLPSDTSELECRNITLANVIRQLGSLSKYAEDIFGEICTQASAFASRVNSLAE  
 RVDRVQVKVTLDPKKEEVSLQGINTRKAFRSSTTQDQKLFDRNSLPVPVLETYNCDAPPPLNLSFYR  
 DDGKEALKFYTNPSYFFDLWKEKMLQDTKDIMKEKRKRKEKKNPNRGNVNPRIKTRKEWEKMKMGQ  
 EFVESKERLGPSTLQNGSIVSIVNDAAASYPPPPQSDSASSPSPFSEDNLPPPPAEFSYPADN  
 QRGSVLAGPKRTSMVSPSHPPAPPLSSPPGPKPGFAPPAPPPPPMSPVPPPLPSMGFGSPGTPPPSP  
 PSFPPHDFAPPPPPPPAADYPMPPPLSQPSGGAPPPPPPPPPPPPLPFSGADGQPAAPPPPPS  
 EATKPKSSLPAVSDARSDLLSAIRQGFQLRRVEEQREKRDVVGNDVATILSRRIAVEYSDSEDDSSSEF  
 DEDDWS

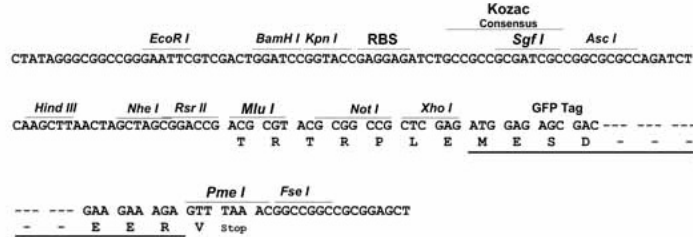
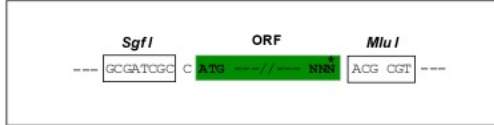
TRTRPLE - GFP Tag - V

**Restriction Sites:**

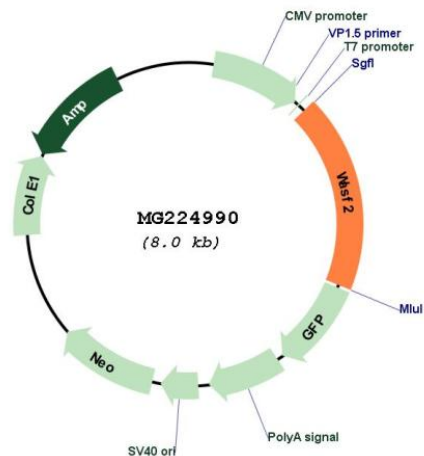
Sgfl-MluI

Cloning Scheme:

Cloning sites used for ORF Shutting:



Plasmid Map:



ACCN: NM\_153423

ORF Size: 1491 bp

<b>OTI Disclaimer:</b>	<p>Due to the inherent nature of this plasmid, standard methods to replicate additional amounts of DNA in E. coli are highly likely to result in mutations and/or rearrangements. Therefore, OriGene does not guarantee the capability to replicate this plasmid DNA. Additional amounts of DNA can be purchased from OriGene with batch-specific, full-sequence verification at a reduced cost. Please contact our customer care team at <a href="mailto:custsupport@origene.com">custsupport@origene.com</a> or by calling 301.340.3188 option 3 for pricing and delivery.</p> <p>The molecular sequence of this clone aligns with the gene accession number as a point of reference only. However, individual transcript sequences of the same gene can differ through naturally occurring variations (e.g. polymorphisms), each with its own valid existence. This clone is substantially in agreement with the reference, but a complete review of all prevailing variants is recommended prior to use. <a href="#">More info</a></p>
<b>OTI Annotation:</b>	<p>This clone was engineered to express the complete ORF with an expression tag. Expression varies depending on the nature of the gene.</p>
<b>Components:</b>	<p>The ORF clone is ion-exchange column purified and shipped in a 2D barcoded Matrix tube containing 10ug of transfection-ready, dried plasmid DNA (reconstitute with 100 ul of water).</p>
<b>Reconstitution Method:</b>	<ol style="list-style-type: none"><li>1. Centrifuge at 5,000xg for 5min.</li><li>2. Carefully open the tube and add 100ul of sterile water to dissolve the DNA.</li><li>3. Close the tube and incubate for 10 minutes at room temperature.</li><li>4. Briefly vortex the tube and then do a quick spin (less than 5000xg) to concentrate the liquid at the bottom.</li><li>5. Store the suspended plasmid at -20°C. The DNA is stable for at least one year from date of shipping when stored at -20°C.</li></ol>
<b>RefSeq:</b>	<p><a href="#">NM_153423.6</a>, <a href="#">NP_700472.1</a></p>
<b>RefSeq Size:</b>	<p>4088 bp</p>
<b>RefSeq ORF:</b>	<p>1494 bp</p>
<b>Locus ID:</b>	<p>242687</p>
<b>UniProt ID:</b>	<p><a href="#">Q8BH43</a></p>
<b>Cytogenetics:</b>	<p>4 66.22 cM</p>
<b>Gene Summary:</b>	<p>Downstream effector molecule involved in the transmission of signals from tyrosine kinase receptors and small GTPases to the actin cytoskeleton. Promotes formation of actin filaments. Part of the WAVE complex that regulates lamellipodia formation. The WAVE complex regulates actin filament reorganization via its interaction with the Arp2/3 complex (By similarity).[UniProtKB/Swiss-Prot Function]</p>