

Product datasheet for **MG224981**

Nwd1 (NM_176940) Mouse Tagged ORF Clone

Product data:

Product Type:	Expression Plasmids
Product Name:	Nwd1 (NM_176940) Mouse Tagged ORF Clone
Tag:	TurboGFP
Symbol:	Nwd1
Synonyms:	A230063L24Rik
Mammalian Cell Selection:	Neomycin
Vector:	pCMV6-AC-GFP (PS100010)
E. coli Selection:	Ampicillin (100 ug/mL)
ORF Nucleotide Sequence:	>MG224981 representing NM_176940 Red=Cloning site Blue=ORF Green=Tags(s)

TTTTGTAATACGACTCACTATAGGGCGCCGGGAATTCGTCGACTGGATCCGGTACCGAGGAGATCTGCC
GCC**CGATCGC**C

ATGGACACAGAGCGAGAAGCCCTGCAGTGCACAGCCTACCCTGAGGTTTCAGAGCTTCTGCCAAAGGCACG
GCTTGGCGTTTGAGGTGGTTGATCTGAGGTGGGTATTCCGAATACGCAGGCCACTGACTACCTGACCAC
GGAAGCTCTGCTTAGAAGAACTGGAGCGCTGTCAGAAAACATCCATAGGACCAGCTTTTGTGGCCCTCCTG
GGTGACCAGTACGGCCCTGCCCGTTCGCCGGAGGATTGAGGAAAAGGAGTGGGAGGCACTAAGAGCTC
AGCTGACCTCCAGGCCTCGAGATCTGGAGCTGGTGACCAGACATTTCCAGAGAGACGACAACACCATTCC
TCCAACCTACGCTTTCAGCCTTCAGGCTCACTGGTGGTCCCAGGGCCTGAGGAGCCACCTTAACCTCT
GTCTGAGAGGTGGAGCCAGGAGGCCTGGAGGCTAGGCCTCATCAGCCAGGAGCAATGGATGTGTATC
ACCGATCAGTTATTGAGTGGGAGATCGAGCTTGGCCTACTGAGCTCAGCAAGAGGGGACCAGGGAGCTAC
CGTCTTCTGAGAGATGTACAGGACCTCAATAACACATCTTGGATGATTGCTCTCTGAAGATGGTGGAT
CGGCTGGTAGATGGCTGCCTGGATACCAATGCCAGAGTCTTCTCAGTGGTCTTAAAGGGCGCATACTAG
ATGCTCAGCCTGGAGCCCTAAAGTCCCACCACCTGTCTGGAGCCGAGACCTGGTCAACCCCAAGAACA
GGCTCACGCTCGTTACCTAAAGCAGTTGAGCGAGCAGTTTCGTGGCCAGGACCAACCATCAGTCCCTGGAG
CAGCTTCGAGAGCTGGAGTTGGCCAGACAGGAGCTGGGTTGGCTCTACCAAGAGATCCGCCACCACCTCT
GGCAGAGCACAGAGTCTACCAAGGTCTTCTGCGGCCACCAGGAGCTCTGGCCAGCTCAGGCAGCAGCT
CAGACAGGATGAGAGCCGGACACATACTCCCTTGGTTCTCTTGGACCACCAGGCATCGGGAAGACCTCT
CTCATGTGCAAGCTAGCCAGCAGGTACCAGAGCTACTTGGCCACAAGACAGTGGTTGTCTGAGGCTGC
TAGGGACATCAAAGCTGAGCCTGGATGCCCGCAGCCTCCTCAGGAGCCTGTCTTCCAAGTGTGCTTGGC
ATATGGGCTGCCACTGCCCCAGCCAGGTCTGGAGGCCACAGCAGGGTGGGCCATTTCTCCATACT
CTCCTCCACACCGTGTACAGAGGAACCTTGGAGTCCCTGGTGTGCTCCTGGACTCCGTGGATGACCTGG
ACTCCATATGCCATTCTCCGAGGTCTCTTGGCTGCCCTCAAGTGTCTCCAAGGTGCACCTCATCTCT
CTTACATGCTCAGGCCAGCAGGTTTTACATAACCTGCAACAGACCTCAAGACCCAGCAGCTACTGG



[View online >](#)

GAGGTGAAGGCCCTGTCTGGAAGTCAAGGCCAGGAGTTCATACAGCTGCTGCTGGCTGCAGAGAAGAGGA
TGCTGAGCCCGGTCAGAGAGATGTCTCTGGCCAGCCTCCCAGAGTGTGGCCACCCAGGGAGGCTAAG
GCTGGCCTTTGAGGAGGCCCGAAGTGGCCCTCCTTCACTGTGCCAGTGCCTTGGCCACTACAGCAGAG
GAAGCCACACACCAGCTCTGTATACGCCTGGAGGAGACACATGGGGCACTGCTGGTGGCTCATGTACTGG
GCTATATTGTGTCTTCCAGGTACGGTCTCTCAGAAGCAGAGCTGAAGGATGTGTTGTCTTTGGATGATGA
AGTCTTGCAGGCTGTGTACCGGGACTGGACCCACCTAGCAAAGAGCTGCTGCGTCTCCCGCCCTGCTG
TGGTCCGGCTCCGCCGGGACTGGGACACTGCCTAGTCAGGAGGCCCGTGGATGGCTGCATGCTACTGG
CCATTGCACACAGACAGCTGTCCAGGTAATCCAAGTTCGATATCTGTCTGGGCCTGAGAGAGCCAAGAG
GCATGGCGTGCTAGCTGAATTCTTCTCTGGAGCCTGGAGCCAGGGATCAAGAACTTATCACCCCTGCCG
CTTGTAGGGAAGCCCTGAACCTGGACCGCAAGGTGGCCACAGCCACTGTGGTTCTCAAGCACAGTGG
CCAACCTGAGGAAGCTGACCGAACTGCCCTTCCATCTGCTGCATGCAGGCCGCTTGGAGGAGTTGAAGCA
GGAGGTTCTGGGAACATGAGTTGGATCTCATGTGCGGGCATCTCTGGAGCATTGAGGTCTGCTGGAT
GATTTTGACATGTGTGCCCTCACATGAACTCTCCTGAGGTTGATCTGGTTAGAGAAGCCATCCAGCTGT
GTGGCCCTGCTGTGGAGCTCCGGGGCTGGAGAAGAGCGTCTATACCCGAGCTCCTGGCCAGACTCCT
TTTCTTTGCTGCATCACATCCAGCAATGATCGGACAACCTGTGCCAACAAGCCAGAGCTGGTTCCGTGCC
TGCCCTACCCAATGCTGGTGGCCCTGGCAGGATTCTGACGCCACCTGGTGGACCTCTTCGAGCCACTC
TACTGGGTGTCACAAAGGCATCACCGCCATAGCATGGAGCCTGGAGGAGAACTCCTGGTGGTGGGCAC
CCAGGATGGTGCCATGGTCGTGTGGGACGTGGAGGAACAACAGGTGGTACACGTTCTAATGGGACACACA
GCTGAAGTGAAGTGTGTGCGAGTGTTCGCCAAGGGACTCTTGCATCTGATCAAAGGACCATACCC
TGCGTCTGTGGAGTCTGCTTCCGGCCAGGAGAAAAGTCAACATTTGGATGGAGGGTCAAAAATCCAC
AGAGCCCCAGAGTTGGGACCTTCATGTGGATGAGAGAAAACATGTTGTATACTCGACATCTGGTGAAGG
ATCAACATGTGGAATCTGAAACTCGAAGCTGGTTTTCTGTATCACAGGAGATGTGTGATCCCTGGG
TCTGTGTGGCTTTGTTGGCTGCCAGGTTTTGCTGCTTGCCTGTCCAAGGGTGGCCAGTGCATGCTGTG
GAGCTCAGCCATGGGAAAACCTGCAGGAGAAAACACCAAGTTATCCAGCATCAAAGAAGAGACACCCACTGT
GCCGTCTCCATCCAGTCCCGGGCAAGGCTGGTCTGCTGGCTTACGAGTGGCTCCATTGCCCTGGTCTCCG
CTGGAGAAGACAGGCTGCTGGAGAAGCTCCCAGAAGCTGTGGGTTTCTGGTGGTTTCTGAAGACGATTC
CCTTCTGTGGCAGGCTTTGGAAGATTTGTGCGGATTTTCTTGGCTGACTCGCAAGGCTTCCACCGGTTT
ATGGCTTCGGATCTGGAACACGAGGACATGGTGGAGACAGCAGTCTTGGTCTGAGAACAATCTGATCA
TCACAGGGTCCCGGATGCACTTATCCAGGTCTGGGATCTCAAGTCCACTAAGAAGCTGCAGTCTCCGAC
TCCATTTCTGGACCGCACCGCCTCGCTGCAGTGTCCACCATGGCAGCTTTGTCTACTTCCCTAAGGTT
GGGACAAAAACAAAGTCACAATTTGGGACTTGGCAGAAGGTGAGGAGCAAGATTGCCTGGACACGTCCA
ATGAGGTCCGCTGTCTGGAGGTGCCGAGCAGGCCAAGCTCCTTTCACAGGCCTGGTTTCTGGGATCGT
GCTTGTGTTCCCCCTGAATTCCAGGCAAGATGACTGTGCATCCCCCACCTGAGGCACGCAAGGCTGTC
AACTGCATGTCCCTGAGCAAGAGTGAGAATCGTCTGGCCATTGCCTATGACAACATTGCTCTGGTCTTG
ACATCAGCCCTGGGACCCATGTCCGGCATTGAAGGCCCCACCTACACCTTTTACACCCAGCTGCCTGA
GACCATAGTGAGTGTGGCTGTCTGGCTGACTATCGTGTGGTCTACGGCATGAGCGATGGCAGCCTTTC
CTGTACGACTGTGCATGCTCTAAAGTGTCCCTCTGGAGGCCATGGGAGCAGGGTGAAGTGTGATGAGG
TCAGCCACAGTGAGCAGCTAGCAGTGAAGTGAAGTGAAGTGAAGTGAAGTGAAGTGAAGTGAAGTGAAG
TTGCAGGGGGATGTTTCGAGATGAGCTATGAGAAGTCTGCTGCAGAGGGGTGCGGTGCTGCTTCTCC
AGGGATGACAAGCATGTATTTGAGGCATGGAGGACCGCTCTGCTACTGCCTGGAGCACGGTGGATGGCA
CTCTTTTGGCTGTCCAGTTTGTTCATGCTGTGATCAACCGAATCATCCCTACCTCCAATGGCTTTCATGGC
CCCCACAAGCCACGGCTATCTCATCCGTGAGCGCTTCCAGTGCCCGTCAGTGCAGCCTCCAGCAAGAC
CCTCTCAAGAACTCAAGAAGGCAGTGTGGCTGGTAAAGACCAGGCAGAGGGAAGAGCTGGCTGCAGCAG
AAGCTCCAGGATGCAGAACCAGTGGCCGTAGAGGGAAGGAATCAAAGTCAAATAAACGCTCACAGGT
CTGCCTCATACTC

ACGCGTACGCGGCCGCTCGAG - GFP Tag - GTTTAA

Protein Sequence: >MG224981 representing NM_176940
 Red=Cloning site Green=Tags(s)

```

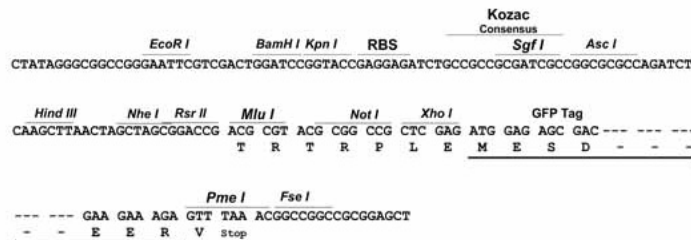
MDTEREALQCTAYPEVQSFQQRHGLAFEVVDLRWGIPTQATDYLTTELCEELERCQKTSIGPAFVALL
GDQYGPCVPRRIEEKWEALRAQLTSRPRDELVTRHFQRDDNTPPTYVLQPSGSLVVPGPPEATLTS
VLRGAQAEAWRLGLISQEQWMCYHRSVIEWEIELGLLSSARGDQGATVFLRDVQDLNKHILDDCSLKMVD
RLVDGCLDTNAQSLLSGLKGRILDAQPGALKSHHL SWSRDLVNPKNKAHARYLKQLSEQFVARTNHQVLE
QLRELELARQELGWLQYQIRHHLWQSTESTKVF CGHQELLAQLRQQLRQDESRTHTPLVLF GPPGIGKTS
LMCKLAQQVPELLGHKT VVVLRL LGTSKLSLDARSLRLSLSFQVCLAYGLPLPPAQVLEAHSRVGHFFHT
LLHTVSQRNFESLVLLLDSDVDDLDSICHSPRVSWLPLKCPVRVHLILSTCSGQQVLHNLQQTLKDPSTYW
EYKALSGSQGQEF IQLLLAAEKRMLSPGQRDVLWASLPECGHGPRRLAFEEARKWASFTVPVPLATTAE
EATHQLCIRLEETHGALLVAHVLYIVSSRYGLSEAELKDVLSL DDEVLQAVYRDWTPPSKELLRFPPLL
WVRLRRDLGHCLVRRPVDGCMLLAI AHRQLSQVIQVRYL SGPERAKRHGVLAEFFSGAWSQGIKKLITLP
LVGKPLNLDKRVAPQPLWFSSTVANLRKLTLPFHLLHAGRLEELKQEV LGNMSWISCRGISGGIEVLDD
DFDMCAPHMNSPEVDLVREAIQLCGPAVELRGLEKSVLYTELLARLLFFAASHPAMIGQLCQQAQSWFRA
CPYPMLVPLAGFLQPPGGPLRATLTGCHKGITAI AWSLEEKLLVVGTDGAMVVWDVEEQVVHVMGHT
AEVKCVRVFAQGTLAISASKDHTLR LWSLLSGQEKVTILDGGSQNPTPEQSWDLHVDERNVVYSTSGAR
INMWNLETSKLVFCITGDVSDPWCVALLAAQGLLLALSKGGQVSLWSSAMGKLQEKHQLSSIKEETPTC
AVSIQSRARLVAGFSSGSIALVSAGEDRLLEKLP EAVGFLVSEDDSLLVAGFGRFVRIFLADSQGFHRF
MASDLEHEMDEVETAVLGPENNL IITGSRDALIQVWDLKSTKKLQSPFPFLDRTGLAAVSHHGSFVYFPKV
GDKNKVTIWDLAEGEEQDCLDTSNEVRCLEVAEQAKLLFTGLVSGIVLVFPLNSRQDVL CIPPPEARAV
NCMSLSKSENRLAIAYDNIVLVLDISP GDPCPAIEGPTYFTYTLPETIVSVAVLADYRVVYGMSDGSLF
LYDCACSKVFPLEAHGSRVSCVEVSHSEQLAVSGAEDALLCLWDLQACRGMFEMS YENSCRCRQVRCACFS
RDDKHVFAGMEDRSVTAWSTVDGTL LAVQFVHAVINRIIPTSNGFMAPTSHGYLIRERFQCP SVRASQDD
PLKNFKKAWLVKTRQREELAAAEASQDAEPVAVEGKESKSNKRSQVCLIL
  
```

TRTRPLE - GFP Tag - V

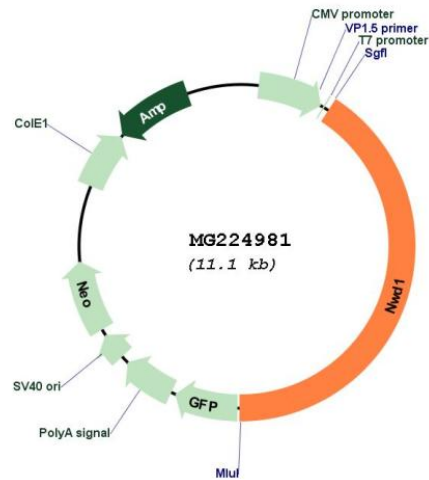
Restriction Sites: SgfI-MluI

Cloning Scheme:

Cloning sites used for ORF Shutting:



Plasmid Map:



ACCN: NM_176940

ORF Size: 4563 bp

OTI Disclaimer: The molecular sequence of this clone aligns with the gene accession number as a point of reference only. However, individual transcript sequences of the same gene can differ through naturally occurring variations (e.g. polymorphisms), each with its own valid existence. This clone is substantially in agreement with the reference, but a complete review of all prevailing variants is recommended prior to use. [More info](#)

OTI Annotation: This clone was engineered to express the complete ORF with an expression tag. Expression varies depending on the nature of the gene.

Components: The ORF clone is ion-exchange column purified and shipped in a 2D barcoded Matrix tube containing 10ug of transfection-ready, dried plasmid DNA (reconstitute with 100 ul of water).

Reconstitution Method:

1. Centrifuge at 5,000xg for 5min.
2. Carefully open the tube and add 100ul of sterile water to dissolve the DNA.
3. Close the tube and incubate for 10 minutes at room temperature.
4. Briefly vortex the tube and then do a quick spin (less than 5000xg) to concentrate the liquid at the bottom.
5. Store the suspended plasmid at -20°C. The DNA is stable for at least one year from date of shipping when stored at -20°C.

RefSeq: [NM_176940.5](#), [NP_795914.3](#)

RefSeq Size: 7732 bp

RefSeq ORF: 4566 bp

Locus ID: 319555

Cytogenetics: 8 B3.3

Gene Summary: May play a role in the control of androgen receptor (AR) protein steady-state levels. [UniProtKB/Swiss-Prot Function]