

## Product datasheet for **MG224974**

### **Aldh3b2 (NM\_001177438) Mouse Tagged ORF Clone**

#### **Product data:**

Product Type:	Expression Plasmids
Product Name:	Aldh3b2 (NM_001177438) Mouse Tagged ORF Clone
Tag:	TurboGFP
Symbol:	Aldh3b2
Synonyms:	A1848594; C130048D07Rik
Mammalian Cell Selection:	Neomycin
Vector:	pCMV6-AC-GFP (PS100010)
E. coli Selection:	Ampicillin (100 ug/mL)



[View online »](#)

**ORF Nucleotide Sequence:**

>MG224974 representing NM\_001177438  
 Red=Cloning site Blue=ORF Green=Tags(s)

TTTTGTAATACGACTCACTATAGGGCGGCCGGAATTCGTCGACTGGATCCGGTACCGAGGAGATCTGCC  
 GCC**CGGATCGCC**

ATGTCTGTGTCAGAGACAGGCTCGGAGCCCTCTCAGGGGCGAGCCCTCTGAGGCCACACTGCACAGCC  
 TCGGGGAGGCCTTCAATGCAGGGCGGACTCGGCCCTACTGAGTTTCGACTGCACAGCTGCGGAGCCCTGGG  
 TCGCTTCTGCAGGAAAACAAAGAGCTGCTGCAAGATGCACTGGCTAAGGACGTGGGCAAGTCAGGCTTC  
 GAGTCAGACATGAGTGAGATCATCTGTGCGAGAATGAGGTGGACCTGGCCCTCAAGAACCTGCAGACCT  
 GGATGAAGGACGAGCCTGTGTCCACCAACTTGCTCACCAAGCTGAGCTCAGCCTTCATCCGAAAGAGCC  
 CTTTGGCCTGGTCTTATCATTGCACCCTGGAATTATCCTGTGAACCTTGATGATCATACCTTTAGTGGGG  
 GCCATTGTGCAGGAACTGTGTGGTGTGAAGCCATCAGAAATTAGCAAGAACACAGAGAAGGTGCTGG  
 CAGAGCTGCTGCCCCAGTATCTGGACCAGAGCTGCTTTGCTGTGATGTTGGGAGGACCCGAGGAGACCAG  
 GCAGCTGCTGGAACACAAATTTGACTATATCTTCTTACAGGAAGTCCTCGGGTAGCAAGATCGTCATG  
 ACTGCTGCTGCCAAACACCTGACACCCATCACCTGGAGCTGGGGGTAAGAACCCTGCTATGTGGATG  
 ACAACTGCGACCCCCAGACAGTGGCCAACCGTGTGGCCTGGTTCCGCTATTTCAATGCCGCCAGACCTG  
 TGTGGCCCCGATTATATCCTGTGTAGCCAGGAGATGCAGGAGCGGTTGGTGCCTGCCCTGCAGAATTCC  
 ATCACGCGTTTCTATGGAGATAACCCACAGACCTCCCCAACCTGGGCGAATCATCAACCAGAAGCATT  
 TCAAGAGGCTCCAGGGATTGCTGGGCTGTGGCCGTGTGGCCATCGGTGGCCAGAGTGTAGGGGAGAGCG  
 CTACATTGCCCCACAGTGTGGTAGACGTGCAGGAGACAGGCCGTGATGCAGGAGGAGATCTTTGGG  
 CCCATCTGCCCTGGTACTGTGAGAAGCCTGGATGAAGCCATTGAGTTCATCAACCGCGGGGAGAAGC  
 CTCTGGCCTGTATGCCCTTCCAACAACAACCAGGTGGTGAATCAGATGTTGGAACGCCACCAGCAGCGG  
 TGGCTTTGGAGGCAACGATGGCTTCTCTACCTGACCCTACCAGCTCTGCCTTTGGGGGGAGTTGGCAAC  
 AGCGGGATGGGCAAGTACCATGGCAAGTTCTCCTTTGACACCTTCTCCCACCATCGTGCCTGCCTGCTGC  
 GCAGCCCTGGGATGGAAGCTTAATGACCTCCGTTACCCGCTTATGGTCCCTGGAACCAACAAGTAT  
 AAGCTGGGCCATAGGCTCCCGAGCTGCACCCTCTG

AG**CGGACCG**ACGCGTACGCGGCCGCTCGAG - GFP Tag - GTTTAA

**Protein Sequence:**

>MG224974 representing NM\_001177438  
 Red=Cloning site Green=Tags(s)

MSAAETGSEPSQGAGPSEATLHSLREAFNAGRTRPTEFRTAQLRSLGRFLQENKELLQDALAKDVGKSGF  
 ESDMSEIILCENEVDLALKNLQTMKDEPVSTNLLTKLSSAFIRKEPFLVLIIPWNYPNLMIIPLVG  
 AIAAGNCVVLKPSEISKNTEKVLAEELLQYLDQSCFAVMLGGPEETRQLLEHKFDYIFFTGSPRVGKIVM  
 TAAAKHLTPITLLELGGKNPCYVDDNCDPQTVANRVAWFRYFNAGQTCVAPDYILCSQEMQERLVPALQNS  
 ITRFYGDNPQTSPLNLRINQKHFRLQGLLGCGRVAIGGQSDEGERYIAPTVLVDVQETEPVMQEEIFG  
 PILPLVTVRSLDEAIEFINRREKPLALYAFSNNQVNVNQLMERTSSGGFGGNDGFLYLTLPALPLGGVGN  
 SGMGRYHGKFSFDTFSHHRACLLRSPGMEKLNDRYPPYGPWNQQLISWAIIGSRSCITLL

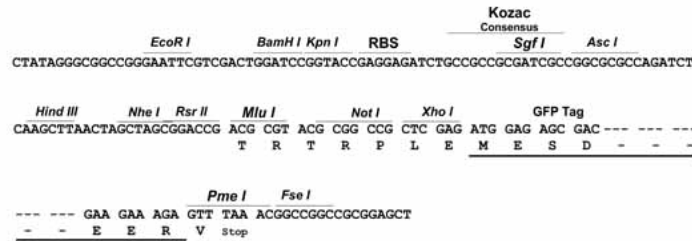
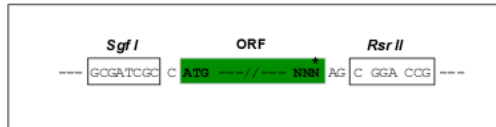
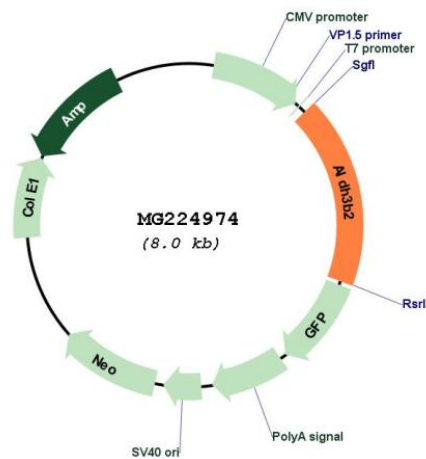
SGP**TRRRLE** - GFP Tag - V

**Restriction Sites:**

Sgfl-RsrII

**Cloning Scheme:**

Cloning sites used for ORF Shuttling:


**Plasmid Map:**

**ACCN:** NM\_001177438

**ORF Size:** 1437 bp

**OTI Disclaimer:** The molecular sequence of this clone aligns with the gene accession number as a point of reference only. However, individual transcript sequences of the same gene can differ through naturally occurring variations (e.g. polymorphisms), each with its own valid existence. This clone is substantially in agreement with the reference, but a complete review of all prevailing variants is recommended prior to use. [More info](#)
**OTI Annotation:** This clone was engineered to express the complete ORF with an expression tag. Expression varies depending on the nature of the gene.

**Components:** The ORF clone is ion-exchange column purified and shipped in a 2D barcoded Matrix tube containing 10ug of transfection-ready, dried plasmid DNA (reconstitute with 100 ul of water).

**Reconstitution Method:**

1. Centrifuge at 5,000xg for 5min.
2. Carefully open the tube and add 100ul of sterile water to dissolve the DNA.
3. Close the tube and incubate for 10 minutes at room temperature.
4. Briefly vortex the tube and then do a quick spin (less than 5000xg) to concentrate the liquid at the bottom.
5. Store the suspended plasmid at -20°C. The DNA is stable for at least one year from date of shipping when stored at -20°C.

**RefSeq:** [NM\\_001177438.1](#), [NP\\_001170909.1](#)

**RefSeq Size:** 2161 bp

**RefSeq ORF:** 1440 bp

**Locus ID:** 621603

**UniProt ID:** [E9Q3E1](#)

**Cytogenetics:** 19 A

**Gene Summary:** Oxidizes medium and long chain aldehydes into non-toxic fatty acids.[UniProtKB/Swiss-Prot Function]