

Product datasheet for **MG224973**

Gtf2ird1 (NM_001081462) Mouse Tagged ORF Clone

Product data:

Product Type:	Expression Plasmids
Product Name:	Gtf2ird1 (NM_001081462) Mouse Tagged ORF Clone
Tag:	TurboGFP
Symbol:	Gtf2ird1
Synonyms:	1700012P16Rik; BEN; Cream1; ESTM9; Gtf2il; GTF3; MusTRD1; Tg(Alb1-Myc)166.8Sst; WBSCR11; X83320
Mammalian Cell Selection:	Neomycin
Vector:	pCMV6-AC-GFP (PS100010)
E. coli Selection:	Ampicillin (100 ug/mL)
ORF Nucleotide Sequence:	>MG224973 representing NM_001081462 Red=Cloning site Blue=ORF Green=Tags(s)

TTTTGTAATACGACTCACTATAGGGCGGCCGGAATTCGTCGACTGGATCCGGTACCGAGGAGATCTGCC
GCC**GCGATCGCC**

ATGGCCTTGCTGGGAAGCACTGTGACATCCCCACCAACGGCTGTGGGTCTGAGCGCTGGAACCTCCACCT
TCGCCCCAAGGACGAACTCATCAACAGTCTGGTGTCCGCCTTAGACTCCATGTGCTCGCGCTCTCCAA
GCTGAACACGGAGGTGGCCTGCGTGGCGGTACACAATGAGAGCGTCTTCGTGATGGGCACCGAGAAGGGA
AGGGTGTTCGAACTCGGAAGGAGCTACAGTCAGACTTCTCAGGTTCTGCCGGGACCCCTGTGGA
ACGATCCAGAAGCAGGACACCCTAAAAAGGTGCAGCGCTGTGAAGGCGGTGGCCGAGCCTCCCGGGTC
CTCTCTGGAGCAGTGTGCTCGGATGTGTACCTGCTGCAGAAGATGGTAGAGGAAGTGTGATGTTCTTTAT
AGTGAGGCTATGGGCAGGGCCACCGTGGTACCTTTGCCCTATGAGAGGCTGCTCAGGAGCCGGGGCTAC
TGGCGGTGCAGGGGCTGCCGAGGGCCTGGCCTTCCGGAGGCCAGCAGAGTATGACCCCAAGGCACTCAT
GGCCATATTGGAGCACAGTCACCGAATTCGGTTAAGCTCAGGAGGCTCCTGATGACGGTGGGCAGGAC
ACGAAGGCGCTGGTGGAGATGAACGGTATCTCTGCTACCCAAGGGGTCCCGAGACTGTGGTCTGCATG
GCCAGGCTCCAAGGTCGCTCCCAAGACCTGACCCCAACCGCCACCCCATCTCTATGGCCAATTCCT
GTACAGCACTTCGATGCCAACCACAGATCCGGGAACCAAGCAGGAGGTGCCAACCTGCCCGTTGACC
CCCAGCGACCTGGGCATGGGCTGGCCGTGCCTGAGCCCCATGTCCCAGCACCAAGATTTCTCTGATT
GCTGTGGACAGACGCCTGCAGGGCCTGCTGGCCCTCATCCAGAATGTCCATGCTTCCAAGCGCATCCT
CTGCGGGAGTGCGTGCAGATTCTGTTTAAACAGCAGATACGCGGAAGCCCTGGGCCTGGACCACATGGTCC
CTGTGCCCTATAGGAAGATTGCCTGTGACCCCGAGGCTGTGAAAATTGTGGGTATTCCAGACAAGATCCC
CTTCAAGCGACCTGTACTTACGGAGTGCCGAAGCTGAAGAGGATTCTGGAGGAGCGACACAGCATTAC
TTCATTATCAAGAGAATGTTTCGATGAGCGCATTTTACAGGGAACAAGTTTACCAAGACCCCATGAAGC
TGGAGCCAGCTAGCCACCAGAAGACACTTCCACAGAAGTCTGTAGGGACAGCATGCTGGACCTGGCTGG



[View online »](#)

GACTGCTTGGTCAGACATGAGCAGCGTCTCTGAAGACTGTGGGCCAGGAACCTCAGGAGAGATAGCAATG
 TTGAGGCCTATCAAAATCGAGCCAGAGGAGCTGGACATTATTCAGGTTACGGTCTCAGATCCTTCACCTA
 CCTCTGAGGAGATGACTGACTCGTTACCTGGGCATCTGCCTCAGAGGATTCCGGTTATGGGATGAAAT
 GCCGGCTGACAAAGGCCCAAGTGAAGAACCCTGGTTCAGAAAGAGAGGCCGCGCCGAAGAGAGCCCTGGTGC
 GTGATCCGGCCCCACGGAAGCAGGTGGAGATGCTGTTCAACACGAAATATGCCAAAGCTATTGGTACCT
 CAGAGCCGGTCAAGTGCCCTACTCCAAGTTCCTGATGCACCCGAGGAGCTGTTCTGATCTGGGACTGCC
 TGAAGCATCTCTCTTCGGAGACCAACTGCTTTGGGATTGCAAAGCTGCGGAAGATTCTGGAAGCGAGC
 AACAGCATCCAGTTTGTATCAAGAGACCCGAAGTCTCACTGACGGTGTCAAAGAACCTGTTCTGGACA
 CTAAGAGAGGGACTCCTGGGACCGTCTTGTGGACGAGACCCGAAGAGACAGGGCCTTCAAGAAAATTA
 CAACACCAGACTCTCGGGATCGACATCGCAACACGCTTAGGGAACAAGTCCAAGACTGTTTAAACAAG
 AAATACGGTGAAGCTCTGGGCATCAAAATACCCAGTGCAGGTGCCCTACAAGAGAAATCAAAAGCAACCCAG
 GCTCGGTAAATCATTGAAGGCCTACCCCCGGGATCCCATTCCGCAAAACCTGCACCTTTGGCTCCCAGAA
 CCTGGAAGGATTCTCTGTGGCTGACAAGATCAAGTTCACGGTACCAGGCCATTCCAAGGACTTATC
 CCAAAGCCTGAAACAAAATTCTACTACAGGACATGAAGCTGGGAAAACCACAGACCAAGGAGACTGC
 AACAGGACACCTGGCAGCCAGATGAGGATGATGCCAACAGACTGGGGAGAAGGTGATCCTCCGAGAGCA
 GGTGAAGGAGCTTTCAATGAGAAATACGGTGAAGCCCTGGGACTGAATCGGCCTGTGCTGGTCCCTTAC
 AAAGTATCCGGGACAGCCAGATGCCGTGGAGGTGAAGGGCCTCCAGATGACATCCCCTTCCGGAACC
 CCAACACCTATGACATCCATCGGCTGGAGAAGATCCTGAAGGCCAGGGAGCATGTGCGGATGGTATCAT
 CAACAGCTCAAACCTTTGCGGAAGTCTGCAATGACCCAAAGGTGCCAGAGGAGGATGACTCTAAACAAG
 CTCGGGAAGAAGGTGATCCTCCGAGAGCAGGTGAAGGAGCTCTTCAATGAGAAATACGGTGAAGCCCTGG
 GACTGAATCGGCTGTGCTGGTCCCTTACAACATGATCCGGGACAGCCAGATGCCGTGGAGGTGAAGGG
 CCTCCCAGATGACATCCCCTTCCGGAACCCCAACACCTATGACATCCATCGGCTGGAGAAGATCCAAGG
 GCCAGGGAGCATGTGCGGATGGTATCATCAACCAGCTCCAACCTTTTGGGAGCTGTCACCAACTGCCA
 AGGTGCCAGCCAAAGACAACATTCCTCAAGCGCAAGAGAGAAAGAGGCTCTCTGAAGGCAACTAGTCTCCT
 TTCTTCTCTCTTCTCTCTCTCTAACCAGAGTCTGTGGCATCCCAACACAGATCTCCCTCGTG
 GTAAAGTACGCGGATCCGAACTTACCCTAATTCTGTGTGGCCTTTGCCCTTCTCGGCAGGGCCAT
 CCACAGCTCCAGGAACTGGGAGGACTGGGCTCTGAGAGGGACTCAGCCAACCACAGAGGGGCAGGCACA
 TCCACTCGTTTTGCCACAAGA

ACGCGTACGCGGCCGCTCGAG – GFP Tag – GTTTAA

Protein Sequence:

>MG224973 representing NM_001081462
 Red=Cloning site Green=Tags(s)

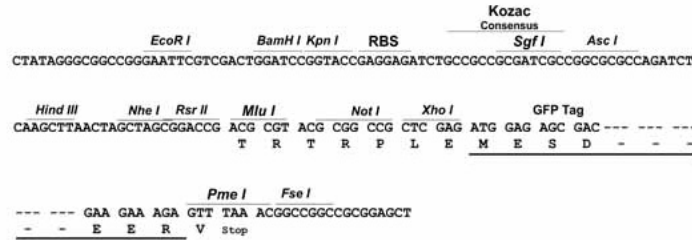
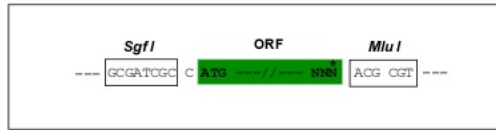
MALLGKHCDIPTNGCGSERWNSTFARKDELINSLVSAIDSMCSALSKLNTEVACVAVHNESVFMGTEKG
 RVFLNTRKELQSDFLRFRCRGLWNDPEAGHPKKVQRCEGGGRSLPRSSLEQCSVDVYLLQKMVEEVDVLY
 SEAMGRATVVPLPYERLLREPGLLAVQGLPEGLAFRRPAEYDPKALMAILEHSHRIRFKLRPPDDGGQD
 TKALVEMNGISLLPKGSRDCGLHGQASKVAPQDLTPTATPSSMANFLYSTSMPNHTIRELKQEVPTCPLT
 PSDLGMGWVPEPHVPSTQDFSDCCGQTPAGPAGPLIQNVHASKRILFSIVHDKSEKWDPFIKEMEDINT
 LRECVQILFNSRYAEALGLDHMVVPYRKIACDPEAVEIVGIPDKIPFKRPCTYGVPKLKRILEERHSIH
 FIIKRMFDERIFTGNKFTKPMKLEPASPPEDTSTEVCRDMLDLAGTAWSDMSSVSEDCGPGTSGEIAM
 LRPIKIEPEELDIIQVTVSDPSTSEEMTDSLPGHLPSEDSGYGMEMPADKGPSEEPWSEERPAEESPGD
 VIRPLRKQVEMLFNTKYAKAIGTSEPVKVPYSKFLMHPEELFVLGLPEGISLRRPNCFGIAKLRKILEAS
 NSIQFVIKPELLTDGVKEPVLDTQERDSWDRLVDETPKRQGLQENYNTLSRIDIANLREQVQDLFNK
 KYGEALGIKYPVQVPYKRIKSNPGSVIIEGLPPGIPFRKPCFTFGSQNLERILSVADKIKFTVTRPFQGLI
 PKPETKILTTGHEAGKTRPRRLQDQDTPDEDDANRLGEKVILREQVKELFNEKYGEALGLNRPVLPY
 KLIRDSFDAVEVKGLPDDIPFRNPNTYDIHRLEKILKAREHVRMVIINQLQPF AEVCNDPKVPEEDDSNK
 LGKKVILREQVKELFNEKYGEALGLNRPVLPYKLIKIRDSFDAVEVKGLPDDIPFRNPNTYDIHRLEKILK
 AREHVRMVIINQLQPFQDVCNNAKVPKDNIPKRKRKRVSEGNVSSSSSSSSSSSNPESVASTNQISLV
 VKSRGSELHPNSVWPLPLPRAGPSTAPGTGRHWALRGTQPTTEGQAHPLVLPTR

TRTRPLE – GFP Tag – V

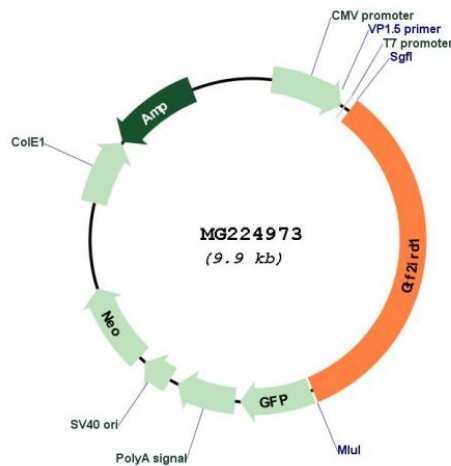
Restriction Sites: SgfI-MluI

Cloning Scheme:

Cloning sites used for ORF Shutting:



Plasmid Map:



ACCN: NM_001081462

ORF Size: 3312 bp

OTI Disclaimer: The molecular sequence of this clone aligns with the gene accession number as a point of reference only. However, individual transcript sequences of the same gene can differ through naturally occurring variations (e.g. polymorphisms), each with its own valid existence. This clone is substantially in agreement with the reference, but a complete review of all prevailing variants is recommended prior to use. [More info](#)

OTI Annotation: This clone was engineered to express the complete ORF with an expression tag. Expression varies depending on the nature of the gene.

Components:	The ORF clone is ion-exchange column purified and shipped in a 2D barcoded Matrix tube containing 10ug of transfection-ready, dried plasmid DNA (reconstitute with 100 ul of water).
Reconstitution Method:	<ol style="list-style-type: none">1. Centrifuge at 5,000xg for 5min.2. Carefully open the tube and add 100ul of sterile water to dissolve the DNA.3. Close the tube and incubate for 10 minutes at room temperature.4. Briefly vortex the tube and then do a quick spin (less than 5000xg) to concentrate the liquid at the bottom.5. Store the suspended plasmid at -20°C. The DNA is stable for at least one year from date of shipping when stored at -20°C.
RefSeq:	<u>NM_001081462.2, NP_001074931.1</u>
RefSeq Size:	3712 bp
RefSeq ORF:	3315 bp
Locus ID:	57080
UniProt ID:	<u>Q9JI57</u>
Cytogenetics:	5 74.55 cM
Gene Summary:	May be a transcription regulator involved in cell-cycle progression and skeletal muscle differentiation. May repress GTF2I transcriptional functions, by preventing its nuclear residency, or by inhibiting its transcriptional activation. May contribute to slow-twitch fiber type specificity during myogenesis and in regenerating muscles. Binds troponin I slow-muscle fiber enhancer (USE B1). Binds specifically and with high affinity to the EFG sequences derived from the early enhancer of HOXC8.[UniProtKB/Swiss-Prot Function]