

Product datasheet for **MG224971**

Pik3r4 (NM_001081309) Mouse Tagged ORF Clone

Product data:

Product Type: Expression Plasmids
Product Name: Pik3r4 (NM_001081309) Mouse Tagged ORF Clone
Tag: TurboGFP
Symbol: Pik3r4
Synonyms: 2210010015Rik; C85833; C730038E05Rik; D9Ertd418e
Mammalian Cell Selection: Neomycin
Vector: pCMV6-AC-GFP (PS100010)
E. coli Selection: Ampicillin (100 ug/mL)
ORF Nucleotide Sequence: >MG224971 representing NM_001081309
Red=Cloning site Blue=ORF Green=Tags(s)

TTTTGTAATACGACTCACTATAGGGCGGCCGGAATTCGTCGACTGGATCCGGTACCGAGGAGATCTGCC
GCC**CGATCGCC**

ATGGGAAATCAGCTGGCTGGTATCGCTCCTCCAGATCCTGTCTGTAGAGAGTTATTTCTCAGACATCC
ATGACTTTGAGTATGATAAGAGCCTGGGAAGCACTCGGTTTTTAAAGTCGCTCGAGCCAAGCACCAGGGA
AGGCTGGTGGTTGTGAAGTCTTTGCAATTCAGGATCCACGTTACCCTAACTAGTTATAAACAGGAG
CTGGAGGAACTGAAAATCCGGCTCCACTCCGCCAGAAGTGCCTCCCTCCAGAAAGCAGCAGAAAAGG
CGTCTGAGAAAGCAGCCATGCTGTTCCGGCAGTATGTGAGAGACAACCTCTACGATCGCATCAGTACCCG
CCCGTTCCCTAAACAACATCGAGAAGCGCTGGATCGCCTTCCAGATCCTGACAGCCGTGGACCAAGCGCAC
AAATCTGGAGTCCGCCACGGAGACATCAAGACAGAGAATGTGATGGTACCAGTTGGAAGTGGTCTCC
TAACCGACTTCGCCAGTTTTAAGCCACATATCTTCCCGAGGACAACCCAGCGGATTTAACTATTTCTT
TGACACCTCGAGAAGGAGGACATGTCTACATAGCTCCCGAGCGCTTCGTTGACGGTGGGATGTTCCGCCACC
GAGTTAGAGTACATGAGAGACCCCTCAACCCCGCTTGTGACCTGAATAGCAATCAGAGAGCAGGGGAG
AGCTGAAGAGAGCCATGGACATCTTTCCGGCAGGTTGCGTGATAGCTGAGCTCTTACGGAAGCGTACC
TTTGTTTGATCTCTCAGCTGCTGGCGTATAGAAATGGACATTTTTCCCTGAACAAGTGCTAAACAAA
ATTGAAGATCGCAGTATCAGAGACTTGGTAACCTCAGATGATTAACCGTGAGCCCGAGAAGCGTTTGGAA
CTGAGGACTACCTGAAGCAGCAGCGAGGCAACGCCTTCCCTGAGATATTTTATACTTTCCTTCAGCCTTA
CATGGCCAGTTCCGCAAGGAAACCTTTCTCTCTGCAGATGAGCGGATTTTGGTTATACGAAAAGATTTG
GGCAACATTATTCACAACCTCTGTGGACACGATTTGCCAGAAAAAGCAGAAGGGGAGTCCAGGGCCAGTG
GGCTGGTGTCTGGTGTCCGTGATAACGTCTGCCTGCAGACTGAAGTCTGCGACTCCAACTGGC
CGCCTGGAGCTCATTCTGCATCTGGCCCCAGACTGAGCGTCGAGATCCTTCTGGATCGCATCACTCCC
TACCTGTTGCATTTAGCAATGACTCTGTCCCAAGAGTGCAGGCTGAAGCCCTGAGGACTCACCAAAG
TCCTTGCCCTGTCCAAGAGTTCTCGCAACGATGTCAATATCTATCCAGAGTATATTCTCCCGGCAT
AGCCACCTGGCCAGGACGACGCTACCATCGTCAGACTGGCCTACGCTGAAAACATAGCTCTGTTGGCC



[View online >](#)

GAGACGGCTCTGCGATTCTGGAGCTTGTGCAGCTGAAAACCTCTCAACATGGAGAACGAGCCCGATAGCG
AGGAGGTAGATGAAGCCACGCGTCTAACGGAGACTATGACACAGAGCTCCAGGCCTTGCATGAGATGGT
CCAGCAGAAGGTGGTACGTTGCTAAGCGACCCTGAGAAATATCGTGAAACAGACGCTGATGGAGAGTGGG
ATCACACGCTTGTGCGTCTTCTCGGACGCCAGAAGGCCAACGACGTTCTTGTCCCACATGATCACTT
TCCTCAATGATAAGAATGATTGGCACCTGCGTGGAGCTTCTTTGATAGCATAGTCGGTGTGGCTGCCTA
GTTGGCTGGCAGAGCTCCTCCATCCTCAAGCCCTGCTCCAGCAAGGCCTCAGCGATGCTGAGGAGTTT
GTCAATCGTGAAAGCTCTCAATGCCCTGACCTGCATGTGCCAGCTAGGGCTGCTGCAGAAACCCCATGTCT
ACGAGTTCGCCAGTGATATTGCTCCCTTCTGTGTACCCTAACCTGTGGATACGCTATGGCGCTGTGGG
ATTTATCACGGTGGTAGCTCATCAGATCAGTACTGCTGATGTCTACTGCAAGCTCATGCCGTATCTCGAC
CCGTATATTACACAGCCAGTGATACAGATTGAGAGGAAGCTGGTCTGCTCAGTGTGCTAAAGGAGCCGG
TGAGCCGCTCCATATTTGACTATGCTCTGAGGTGAAAGACATCGCCAGCTTGTTCAGACATCTCCACAT
GCGCCAGAAGAAGCGAAATGGCTCTTCTCGACTGCCCGCCGCTGAGGACCCACCATAGCGCAACTT
CTGAAGAAGCTGCTCTCACAGGGGATGACTGAAGAAGAGGAAGATAAACTTCTGGCACTGAAGGACTTCA
TGATGAAATCAAATCGAGCCAAAGCTAATGCGGTAGACCAGAGCCACCTCCACGACAGCAGCCAGAAAGG
TGTAATCGACTTGGCCGCTTAGGCATCACTGGGAGACAAGTTGATCTTGTAAAACCAAACAAGAACCA
GATGAGAAACGTCTAGGAAACATGTGAAACAAGACTCCAATGTAATGAAGAGTGGAAAAGCATGTTTG
GGTCATTGGAGCCACCGAATATCCACAGGCCCTGCCATAAACAGTGACCATGAGGTTGTTTCAGCCTGG
GAAGCCACCTCGCTCTGAGTCTCTGCTGGTATCTGTGTCCCTTGTCAACATCTCCACAGGTCTCAGAA
GCAGCACACATCCCGAGTAAGAAGCCTGTGATCCCGGTTGTAAGTAGCACGGTCTGCCGTCCACTTACC
AGATCCGGATCACACGTGCAAGACTGAACTTACGACGCTCATACAGCAGAAGCGGGAGCAGTGCAACGC
GGAGCGCATAGCCAAGCAGATGATGGAGAATGCCGAGTGGGAGAGCAAGCCACCTCCACCTGGGTGGCGT
CCTAAAGGGCTGCTAGTTGCACATCTTCATGAGCACAAATCTGCTGTGAATCGCATCAGAGTCTCTGATG
AACACTTACTTTTTGCAACATGTTCAAATGATGGCACAGTGAAGATCTGGAACAGCCAGAAGATGGAGGG
GAAGACCACCAACGCGGTCTATTCTCAGTACAGCCGAATTGGAGGACGAGTCAAGACGCTAACGTTT
TGCCAAGGCTCCCACTACTTGGCCATAGCATCTGATAATGGTGTGTCCAGCTTCTTGAATTGAGGCGT
CTAAGTTACCCAAGTCTCCTAAAATTCACCCTCTACAAAGCAGGATTCTGGATCAGAAGGAAGATGGCTG
TGTGGTGGACATGCATCACTTCAACTCCGGGGCACAGTCCGTTCTTGCCTATGCCACGGTGAATGGCTCT
CTGTTGGATGGGATCTCAGGTCTTCAAGCAACGCGTGGACATTAAGCATGACCTAAAGTCAGGCCTCA
TCACTTCTTTGCTGTGGACATCCACCAGTGTGGCTGTGCATAGGCACGAGCAGCGGTGCCATGGCGTG
TTGGGACATGAGGTTCCAGTTGCCATCTCCAGTCACTGTATCCCTCCAGAGCTCGCATCCGGCGCCTC
TCCATGCACCCCTGTACCAGTCTGGTAATCGCAGCTGTTGAGGCAACAATGAAGTCTCCATGTGGG
ACATGGAGACTGGCGACAGGAGACTGACTCTCTGGGCCAGCAGCGCACCCGCACTGTCTGAGTTACAGCC
TTCACCGCACAGCGTCCATGGCATCTACTGCAGCCCTGCAGATGGAAACCTATCCTGCTGACCGCTGGC
TCAGACATGAAAATAAGGTTCTGGGACTTGGTTTCCCCAGAGAGGTCCTATGTTGTTGCGGGAAGTACAG
GTTCCCGTCTGTCTCCTACTACAAGAAGATAATAGAAGGCACCGAGGTTGTCCAGGAAATTCAGAATAA
GCAGAAGGTGGACCGAGTGATGACACCCTCGGAGGGGCCGGAGTCTCTGCCTGTGGGACATCATGAC
ATCATTACAGACATTGCCACCTCCAGACCACTCAGGGCTTATTGTGACTGCTTCTAGAGACGGAATTG
TGAAGGTGTGAAA

AGCGGACCGACGCGTACGCGGCCGCTCGAG - GFP Tag - GTTTAA

Protein Sequence: >MG224971 representing NM_001081309
 Red=Cloning site Green=Tags(s)

```

MGNQLAGIAPSQILSVESYFSDIHDFEYDKSLGSTRFFKVARAKHREGLVVVKVFAIQDPTLPLTSYKQE
LEELKIRLHSAQNCLPFQKAAEKASEKAAMLFROYYVDNLYDRISTRPFLNNEIEKRWIAFQILTAVDQAH
KSGVYRHGDIKTENVMVTSWNWVLLTDFASFKPTYLPEDNPADFNFFDTSRRRTCYIAPERFVDGGMFAT
ELEVMRDPSTPLVDLNSNQARGELKRAMDIFSAGCVIAELFTEGVPLFDLSQLLAYRNGHFFPEQVLNK
IEDRSIRDLVLTQMINREPEKRLAEEDYLKQQRGNAPFEIFYTFLQPYMAQFAKETFLSADERILVIRKDL
GNIIHNLCGHDLPEKAEGESRASGLVVLVSVITSCLQTLKSCDSKLAALELILHLAPRLSVEILLDRITP
YLLHFSNDSVPRVRAEALRTLTKVLALVQEVPRNDVNIYPEYILPGIAHLAQDDATIVRLAYAENIALLA
ETALRFLLELVQLKTLNMENEPDSEEVDEATRPNGDYDTELQALHEMVQKVVVTLSDPENIVKQTLMESG
ITRLCVFFGRQKANDVLLSHMITFLNDKNDWHLRGAFFDSIVGVAAYVQSSSILKPLLQQLSDAEF
VIVKALNALTMCQGLLQKPHVYEFASDIAPFLCHPNLWIRYGAVGITVVAHQISTADVYCKLMPYLD
PYITQPVIQIERKLVLLSVLKEPVSRSIFDYALRSKDIASLFRHLHMRQKRNGLLDCPPPEDPTIAQL
LKKLLSQGMTEEEEDKLLALKDFMMKSNRAKANAVDQSHLHDSSQKGVIDLAAALGITGRQVDLVKTKQEP
DEKRARKHVQKDSNVNEEWKSMFGSLEPPNIPQALPKTSDHEVVQPGKPPRESSAGICVPLSTSPQVSE
AAHIPSCKPVIPVVSSTVLPSTYQIRITTKTELQQLIQKREQCNAERIAKQMMENAEWESKPPPPGWR
PKGLLVAHLHEHKSAVNRIRVSDEHLLFATCSNDGTVKIWNQKMEGKTTTTRISILTYSRIGGRVKTTF
CQGSHYLAIASDNGAVQLLGEASKLPKSPKIHPLQSRILDQKEDGCVDMHMFNSGAQSVLAYATVNGS
LVGWLDRSSSNATLKHDLKSLITSFAVDIHQCWLCIGTSSGAMACWDMRFQLPISSHCHPSRARIRRL
SMHPLYQSWVIAAVQGNNEVSMWDMETGDRRLTLWASSAPPLSELQSPHVSVHGIYCSPADGNPILLTAG
SDMKIRFWDLVSPERSYVAGSTGSPSVSYKKIIEGTEVVQEIQNKQKVGPSDDTPRRGPESLPGVHHD
IITDIATFQTTQGFIVTASRDGIVKVVK
  
```

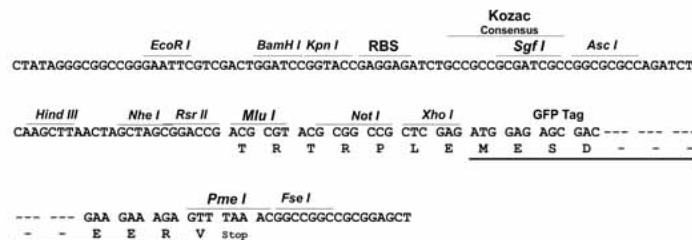
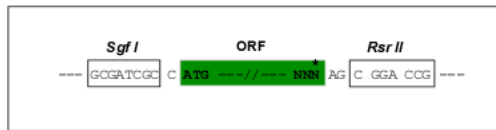
SGPTRRRLE - GFP Tag - V

Restriction Sites:

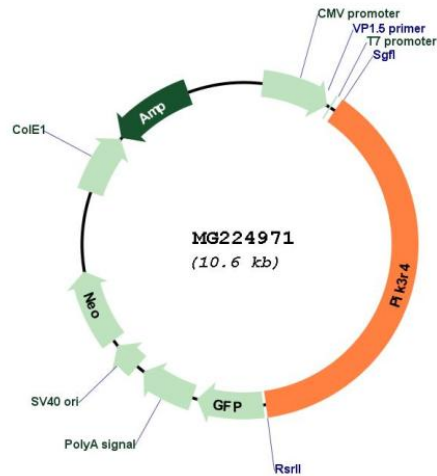
SgfI-RsrII

Cloning Scheme:

Cloning sites used for ORF Shuttling:



Plasmid Map:



ACCN: NM_001081309

ORF Size: 4074 bp

OTI Disclaimer: The molecular sequence of this clone aligns with the gene accession number as a point of reference only. However, individual transcript sequences of the same gene can differ through naturally occurring variations (e.g. polymorphisms), each with its own valid existence. This clone is substantially in agreement with the reference, but a complete review of all prevailing variants is recommended prior to use. [More info](#)

OTI Annotation: This clone was engineered to express the complete ORF with an expression tag. Expression varies depending on the nature of the gene.

Components: The ORF clone is ion-exchange column purified and shipped in a 2D barcoded Matrix tube containing 10ug of transfection-ready, dried plasmid DNA (reconstitute with 100 ul of water).

Reconstitution Method:

1. Centrifuge at 5,000xg for 5min.
2. Carefully open the tube and add 100ul of sterile water to dissolve the DNA.
3. Close the tube and incubate for 10 minutes at room temperature.
4. Briefly vortex the tube and then do a quick spin (less than 5000xg) to concentrate the liquid at the bottom.
5. Store the suspended plasmid at -20°C. The DNA is stable for at least one year from date of shipping when stored at -20°C.

RefSeq: [NM_001081309.1](#), [NP_001074778.1](#)

RefSeq Size: 4884 bp

RefSeq ORF: 4077 bp

Locus ID: 75669

UniProt ID: [Q8VD65](#)

Cytogenetics: 9 56.79 cM

Gene Summary:

Regulatory subunit of the PI3K complex that mediates formation of phosphatidylinositol 3-phosphate; different complex forms are believed to play a role in multiple membrane trafficking pathways: PI3KC3-C1 is involved in initiation of autophagosomes and PI3KC3-C2 in maturation of autophagosomes and endocytosis. Involved in regulation of degradative endocytic trafficking and cytokinesis, probably in the context of PI3KC3-C2 (By similarity). [UniProtKB/Swiss-Prot Function]