

Product datasheet for **MG224964**

Clcn4 (NM_011334) Mouse Tagged ORF Clone

Product data:

| | |
|---------------------------|--|
| Product Type: | Expression Plasmids |
| Product Name: | Clcn4 (NM_011334) Mouse Tagged ORF Clone |
| Tag: | TurboGFP |
| Symbol: | Clcn4 |
| Synonyms: | cIC-4; Clc4-2; Clcn4-2 |
| Mammalian Cell Selection: | Neomycin |
| Vector: | pCMV6-AC-GFP (PS100010) |
| E. coli Selection: | Ampicillin (100 ug/mL) |



[View online »](#)

ORF Nucleotide Sequence:

>MG224964 representing NM_011334
 Red=Cloning site Blue=ORF Green=Tags(s)

TTTTGTAATACGACTCACTATAGGGCGGCCGGAATTCGTCGACTGGATCCGGTACCGAGGAGATCTGCC
 GCC**CGGATCGCC**

ATGGACTTCTCGAGGAGCCCTTCCTGACGTGGGGACCTACGAGGACTCCACACCATAGACTGGCTGA
 GGGAAAAGTCCCGGATACCGACAGACATAGGAAGATCACCAGCAAAAGTAAGGAGTCTATTTGGGAGTT
 CATCAAGAGCCTGCTGGACGCGTGGTCGGGATGGGTGGTACTACTATTGGGCTGCTGGCAGGTACC
 TTGGCTGGAGTCACTCGATCTCGCTGTGGATTGGATGACGGACCTCAAGGAGGGGGTCTGTCTGCCGAT
 TCTGGTACAGCCATGAACAGTGTGTTGGACCTCAACGAGACCCTTTTGGAGCAGGGACAAGTGTCC
 CCTGTGGCAGAAGTGGTCAGAGCTTCTTCTGAGCCAGTCAGAGGGCGCCAGCGCTTACATTCTGAATTAC
 TTAATGTACATTCTATGGGCGTTGCTGTTTGCATTTCTGGCTGTCTCCCTGGTACGTGTGTTCCGACCGT
 ATGCCTGTGGCTCTGCCATACCCGAGATAAAGACTATTTTGGTGGCTTTATCATCAGGGGATACTTGGG
 GAAATGGACTCTTCTAATCAAGACTGTCAACCTCGTGTGCTCGTATCCTCTGGCCTGAGCCTTGGCAA
 GAGGGCCCACTGGTGCATGTGGCATGTTGCTGTGGCAACTTCTTCAAGCAGCCTTTTCTCCAAGTATAGCA
 AGAATGAAGGCAAGAGGCGTGAGGTGCTTTCAGCTGCAGCTGCTGCTGGTGTCTCTGTGGCCTTTGGTGC
 TCCGATAGGAGGTGTGCTCTTCACTCTAGAGGAGTCACTTACTACTTTCCCTTGAAAACCTTGTGGAGG
 TCATTCTTTGACGCCCTGGTGGCTGCCTTCACTGCGCTCCATCAACCCCTTTGGAAAATAGCCGCTGG
 TTCTCTTTTATGTGGAGTATCATACCCCTGGTACATGGCTGAACCTTCCCTTTTATCTCTGCTTGGAGT
 CTTTGGGGTTTATGGGAAACCTTTCACACGCTGCAACATTGCTTGGTGCAGGAGGCGTAAGACCACC
 AGGCTGGGAGGTACCCAGTGTGGAGGTTATTGCGGTGACAGCCGTACCCGCTCGTGGCCTACCCCA
 ATCCCTACACTCGCCAGAGCACCAGTGTGCTCATCTGAGCTTCAACGATTGTGGGCTCTCGAGTC
 TTCTCAGCTCTGTGACTACATCAACGACCCCAACATGACTCGGCCTGTGGATGACATTCCGG[AT]CCGG
 CCGGCTGGGTTGGAGTTTACACAGCCATGTGGCAGCTGGCCTTGGCACTGATCTTCAAAAATAGTATTA
 CTATATTTACCTTTGGCATGAAGATTCCCTCAGGTCTCTTATCCCCAGTATGGCTGTGGAGCCATGGC
 AGGCCGGATGGTGGGAATCGGTGTGGAGCAGCTGGCCTACCATCACCATGACTGGATCATCTTCAGGAAC
 TGGTGCAGGCCTGGAGCGGACTGTGTACACCAGGGCTTTATGCGATGGTGGGAGCTGCAGCCTGTCTAG
 GTGGGGTACTAGGATGACAGTGTCTTAGTGGTCAATATGTTTGAAGTACTGGAGGTCTGGAGTATAT
 TGTACCCCTGATGGCAGCTGTGTACCCAGCAAGTGGTGGCTGATGCCTTTGGGAAAGAAGGGATTTAT
 GAAGCCACATCCATCTGAATGGTACCCATTTCTTGTGATGAAGGATGAGTTACCCACCGTACGCTGG
 CCACTGATGTGATGCGGCCCGGAGGGGAGAACCACCATTATCGTACTAACCCAGGACAGCATGACTGT
 GGAGGACGTGGAGACTCTCATCAAGGAGACAGACTACAACGGCTTTCCTGTGCTCGTCTCCAGAGACTCG
 GAGCGTCTCATCGGGTTTGGCCAGAGGGGGAGCTAATCTTGGCTATAAAAAATGCCAGGCAGAGGCAAG
 AGGGCATTGTGAGCAATTCATCATGTACTTCACAGAGGAGCCTCCTGAGCTGCCTGCCAACAGCCACA
 TCCACTGAAGCTGAGGCGCATTTTGAACCTGAGCCCTTTCACGGTACAGATCACACCCCATGGAGACG
 GTGGTGGACATTTCCGGAACTGGGGCTCCGACAATGCCTGGTACACGGAGTGGGAGACTTCTTGGGA
 TCATCACAAAAAGGATGTTCTGAGACATGGCCAGATGGCAAACAGGACCTGAATCCATCATGTT
 TAAT

AC**GGGCCCGC**TCGAG - GFP Tag - GTTTAA

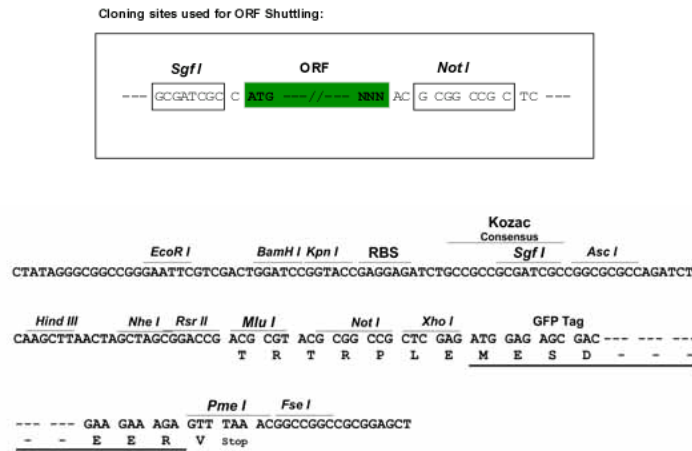
Protein Sequence: >MG224964 representing NM_011334
 Red=Cloning site Green=Tags(s)

MDFLEEFPPDVGTYEDFHTIDWLREKSRDTRHRKITSKSKESIWEFIKSLDDAWSGWVVMLLIGLLAGT
 LAGVIDLAVDWMIDLKEGVCLSAFWYSHEQCCWTSNETTFEDRDKCPLWQKWESELLLSQSEGASAYILNY
 LMYILWALLFAFLAVSLVRVFAPYACGSGIPEIKTILSGFIIRGYLGKWTLLIKTVTLVLVSSGLSLGK
 EGPLVHVACCCGNFFSSLF SKYSKNEGKRREVL SAAAAAGVSVAFGAPIGGVLFSL EEEVSYFFPLKTLWR
 SFFAALVAFTLRSINPFGNSRLVLFYVEYHTPWYMAELFPFILLGVFGGLWGTLFTRCNIAWCRRRKTT
 RLGRYPVLEVI AVTAVTAIVAYPNPYTRQSTSELI SELFNDCGALESSLCDYINDPNMTRPVDDIPXXR
 PAGVGVYTAMWQLALALIFKIVITIFTFGMKIPSGLFIPSMAVGAMAGRMVIGVEQLAYHHHDWIFRN
 WCRPGADCVTPLYAMVGAACLGGVTRMTVSLVVIMFELTGGLEYIVPLMAAAVTSKWVADAFGKEGIY
 EAHIHNLGYPFLLDVKDEFTHRTLATDVMRPRRGEPLSVLTQDSMTVEDVETLIKETDYNGFPVLVSRDS
 ERLIGFAQRRELILA IKNARQRQEGIVSNSIMYFTEPEL PANSHPHPLKLRRLNLSPFTVTDHTPMET
 VVDIFRKLGLRQCLVTRSGRLLGIITKKDVLRHMAQMANQDPESIMFN

TRPLE - GFP Tag - V

Restriction Sites: SgfI-NotI

Cloning Scheme:



ACCN: NM_011334

ORF Size: 2244 bp

OTI Disclaimer: Due to the inherent nature of this plasmid, standard methods to replicate additional amounts of DNA in E. coli are highly likely to result in mutations and/or rearrangements. Therefore, OriGene does not guarantee the capability to replicate this plasmid DNA. Additional amounts of DNA can be purchased from OriGene with batch-specific, full-sequence verification at a reduced cost. Please contact our customer care team at custsupport@origene.com or by calling 301.340.3188 option 3 for pricing and delivery.

The molecular sequence of this clone aligns with the gene accession number as a point of reference only. However, individual transcript sequences of the same gene can differ through naturally occurring variations (e.g. polymorphisms), each with its own valid existence. This clone is substantially in agreement with the reference, but a complete review of all prevailing variants is recommended prior to use. [More info](#)

OTI Annotation: This clone was engineered to express the complete ORF with an expression tag. Expression varies depending on the nature of the gene.

Components: The ORF clone is ion-exchange column purified and shipped in a 2D barcoded Matrix tube containing 10ug of transfection-ready, dried plasmid DNA (reconstitute with 100 ul of water).

Reconstitution Method:

1. Centrifuge at 5,000xg for 5min.
2. Carefully open the tube and add 100ul of sterile water to dissolve the DNA.
3. Close the tube and incubate for 10 minutes at room temperature.
4. Briefly vortex the tube and then do a quick spin (less than 5000xg) to concentrate the liquid at the bottom.
5. Store the suspended plasmid at -20°C. The DNA is stable for at least one year from date of shipping when stored at -20°C.

RefSeq: [NM_011334.3](#), [NP_035464.3](#)

RefSeq Size: 4620 bp

RefSeq ORF: 2244 bp

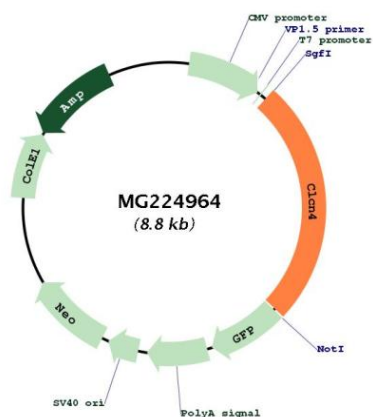
Locus ID: 12727

UniProt ID: [Q61418](#)

Cytogenetics: 7 4.23 cM

Gene Summary: Proton-coupled chloride transporter. Functions as antiport system and exchanges chloride ions against protons (By similarity).[UniProtKB/Swiss-Prot Function]

Product images:



Circular map for MG224964