

Product datasheet for **MG224958**

Il10rb (NM_008349) Mouse Tagged ORF Clone

Product data:

Product Type:	Expression Plasmids
Product Name:	Il10rb (NM_008349) Mouse Tagged ORF Clone
Tag:	TurboGFP
Symbol:	Il10rb
Synonyms:	6620401D04Rik; AI528744; CRF2-4; Crfb4; D16H21S58; D21S58h; IL-10R2; Il10r2
Mammalian Cell Selection:	Neomycin
Vector:	pCMV6-AC-GFP (PS100010)
E. coli Selection:	Ampicillin (100 ug/mL)
ORF Nucleotide Sequence:	>MG224958 representing NM_008349 Red=Cloning site Blue=ORF Green=Tags(s)

TTTTGTAATACGACTCACTATAGGGCGCCGGGAATTCGTCGACTGGATCCGGTACCGAGGAGATCTGCC
GCC**CGATCGCC**

ATGTCCTGGGCGCCGAGCGTGGCGGGCTGGCTGGGTGGCTTCTTCTGGTGCCAGCTCTAGGAATGATTC
CACCCCTGAGAAGGTCAGAATGAATTCAGTTAATTTCAAGAACATTCTACAGTGGGAGGTACCTGCTTT
CCCCAAAACGAACCTGACTTTCACAGCTCAGTATGAAAGTTACAGGTCTTCCAAGATCACTGCAAGCGC
ACTGCCTCGACTCAGTGCGACTTCTCATCTTTCTAAATACGGAGACTACACTGTGAGAGTCAGGGCTG
AATTGGCGGATGAACATTCGGAGTGGGTCAATGTCACCTTCTGCCCGTGAAGACACCATCATTGGACC
TCCTGAGATGCAGATAGAATCCCTTGCTGAGTCTTACACCTGCGTTTCTCAGCCCCACAAATTGAGAAT
GAGCCTGAGACGTGGACCTTGAAGAACATTTATGACTCATGGGCTTACAGAGTGCAATACTGGAAAAATG
GGACTAATGAGAAGTTTCAAGTTGTGTCTCCGTACGACTCTGAGGTCTCCGGAACCTGGAGCCGTGGAC
AACTTACTGCATTCAAGTTCAAGGGTTTCTTCTCGACCAGAACAGAACAGGAGAGTGGAGTGAACCCATC
TGTGAACGGACAGGCAATGACGAAATAACCCCTTCTGGATTGTGGCCATCATCCTCATAGTCTCCGTCC
TGGTGGTCTTCTCTTCTCCTGGGCTGCTTTGTCTGCTGTGGCTCATTATAAGAAGACCAAGCATAC
CTTCCGTTCTGGGACGTCTTCCACAGCACCTGAAGGAGTTTCTGGGCCACCCCATCACAGCACGTTT
CTGCTGTTCTCCTTCCCTCCCCCGAGGAGGCGGAGGTTCGACAACTAAGCATCATCAGCGAAGAGT
CTGAAGGCAGCAAGCAGAGTCTTGAAGACAACCTGTCCTCAGAGCCCCGTCTGATCCAGGGCCTCGGGA
GCTGGAGTCCAAGGATGAAGCTCCCTCACCTCCACACGATGACCCCAAAGTCTCACGTCGACTCAGAA
GTA

ACGCGTACGCGGCCGCTCGAG - GFP Tag - GTTTAA



[View online »](#)

Protein Sequence: >MG224958 representing NM_008349
 Red=Cloning site Green=Tags(s)

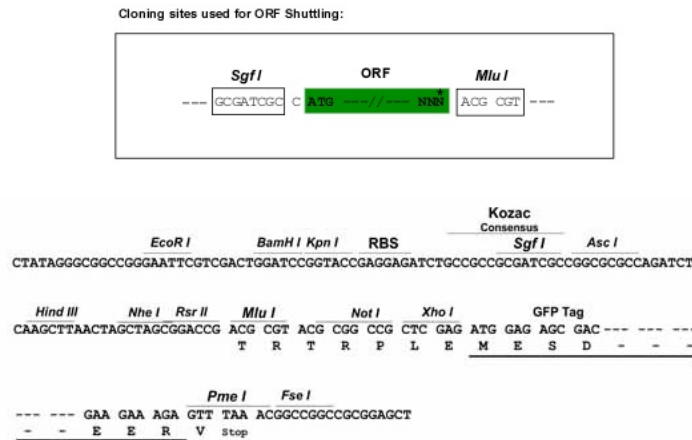
MSWAPSVAGWLGGLLVPALGMIPPPEKVRMNSVNFKNILQWEVPAFPKTNLTFTAQYESYRSFQDHCKR
 TASTQCDFSHLSKYGDYTVRVRAELADEHSEWVNVTFCPVEDTIIGPPEMQIESLAESLHLRFSAPQIEN
 EPETWTLKNIYDSWAYRVQYWKNGTNEKFQVSPYDSEVLRNLEPWTTCIQVQGFLLDQNRTEWSEPI
 CERTGNDEITPSWIVAVIILIVSVLVVFLFLLGCFVVLWLIYKTKHTFRSGTSLPQHLKEFLGPHHSTF
 LLFSFPPPEEAEVFDKLSIISEESESGKQSPEDNCASEPPSDPGPRELESKDEAPSPPHDDPKLLTSTSE
 V

TRTRPLE - GFP Tag - V

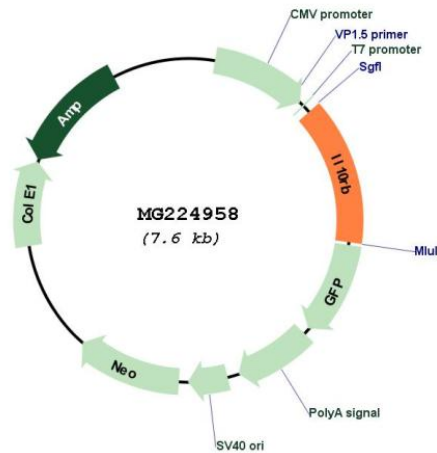
Restriction Sites:

SgfI-MluI

Cloning Scheme:



Plasmid Map:



ACCN:

NM_008349

ORF Size:	1053 bp
OTI Disclaimer:	The molecular sequence of this clone aligns with the gene accession number as a point of reference only. However, individual transcript sequences of the same gene can differ through naturally occurring variations (e.g. polymorphisms), each with its own valid existence. This clone is substantially in agreement with the reference, but a complete review of all prevailing variants is recommended prior to use. More info
OTI Annotation:	This clone was engineered to express the complete ORF with an expression tag. Expression varies depending on the nature of the gene.
Components:	The ORF clone is ion-exchange column purified and shipped in a 2D barcoded Matrix tube containing 10ug of transfection-ready, dried plasmid DNA (reconstitute with 100 ul of water).
Reconstitution Method:	<ol style="list-style-type: none">1. Centrifuge at 5,000xg for 5min.2. Carefully open the tube and add 100ul of sterile water to dissolve the DNA.3. Close the tube and incubate for 10 minutes at room temperature.4. Briefly vortex the tube and then do a quick spin (less than 5000xg) to concentrate the liquid at the bottom.5. Store the suspended plasmid at -20°C. The DNA is stable for at least one year from date of shipping when stored at -20°C.
RefSeq:	NM_008349.5 , NP_032375.2
RefSeq Size:	1878 bp
RefSeq ORF:	1056 bp
Locus ID:	16155
Cytogenetics:	16 52.87 cM