

Product datasheet for **MG224954**

Chd3 (NM_146019) Mouse Tagged ORF Clone

Product data:

Product Type:	Expression Plasmids
Product Name:	Chd3 (NM_146019) Mouse Tagged ORF Clone
Tag:	TurboGFP
Symbol:	Chd3
Synonyms:	2600010P09Rik; AF020312; Chd7; Prp7; Prp9-1
Mammalian Cell Selection:	Neomycin
Vector:	pCMV6-AC-GFP (PS100010)
E. coli Selection:	Ampicillin (100 ug/mL)
ORF Nucleotide Sequence:	>MG224954 representing NM_146019 Red=Cloning site Blue=ORF Green=Tags(s)

TTTTGTAATACGACTCACTATAGGGCGGCCGGAATTCGTCGACTGGATCCGGTACCGAGGAGATCTGCC
GCC**CGATCGCC**

ATGGCTTCCCCTCTGAGGGACGAGGAGGAGGAGGAGGAGGAGATGGTGGTGTCCGAGGAGGAAGAAGAGG
AGGAAGAAGAGGGCGACGAGGAGGAGGAGGAGGAGTGGAGGCGGCCGACGAGGACGATGAGGAGGAGGACGA
AGAGGGAGTACTCGGGCGGGCCGGCCACGACCGGAGCCGCGACCGCCACAGCCCCCAGCTGCCAC
CTCTTCCCGCCGCGCCCGCCGCTGCCCGCCCCCGCCACCAGATAAAGATGATATTCGGCTGCTGC
CTTCAGCGTTGGGTGTGAAGAAGCGAAAACGAGGCCCTAAGAAGCAGAAGGAAAACAAGCCAGGCAAACC
TAGGAAAACGGAAGAAGCTCGACAGTGAAGAGGAATTTGGCTCAGAGCGAGATGAGTACCGGAGAAATCA
GAGAGTGGAGGCAGCGAGTATGGAAGTGGACCAGGTCCGAAACGAAGAAGGAAGCACCGAGAAAAAAG
AGAAAAAACAAGAGGAGGAAAAGGGGAGAAGGGATGGGGACACAAGCAGGTGGAGCAGAAGTCATC
CGCAACCTTGCTTCTGACCTGGGGCTTAGAGGATGTGGAACACGTGTTCTCCGAGGAGGACTACACACA
CTTACCAATTACAAGCTTTCAGTCAGTTCATGAGGCCCTAATTGCTAAGAAGAATCCTAAGATCCCGA
TGTCAAAGATGATGACCATCCTGGGGCCAAGTGGAGAGAGTTTCAGTGCCAAATACCCCTCAAAGGGTC
GGCAGCTGCCGTGGCGGGCAGCGGCAGCAGCAGCAGCAGCTGTGGCTGAGCAGGTGTGAGCTGCTGTC
TCCTCAGCCACCCCATAGCACCATCTGGACCCCCCTGCCCTTCCACCACCCCTGCTCCTGAAATCC
AGCCCCACCCATCAGAAGAGCCTAAGAACCAAGAGGGCAAGGTCAGGCCCACAAGAGGGCGAATAAGAG
CCCCGAGTGCCTGATGGACGCAAGAAGCTTCAGGGAAGAAGATGGCGCCACTGAAAATCAAGTAGGG
CTGCTGGGTGGCAAGAGGAAGAAGGCGGGCTCGTGTGCTTTTCAGAGTGAGGAGGGCCATGAACCAGAGG
CAGAGGAGTCAGACCTGGACAGTGGTAGTGTCCATAGTGCCTCAGGCTGGCCTGATGGCCCTGTCCGTGC
CAAGAAGCTGAAGCGAGGTCCGCCAGGAAGGAAGAAGAAGGTCCTGGGCTGCTGCTGAGTACCCGGA
GAGGAGGAAGTTGACGGTACGAGACGGATCACCAGGATTACTGTGAGGTGTCCAGCAGGGCGGGGAAA
TTATTCTGTGCGACACCTGCCCGTGCCTACCACCTCGTCTGCCTTACCCCGAGCTTGACCGGGCTCC
TGAGGGCAAGTGGAGCTGCCCCACTGTGAGAAGGAGGGGTGCAGTGGGAGGCCAAGGAGGAGGAGGAA



[View online >](#)

GAGTATGAGGAGGAAGGGGAGGAGGGAGAGAAGGAGGAAGAGGATGACCACATGGAGTACTGCCGAGTGT
 GCAAGGACGGCGGGGAGCTCCTGTGCTGTGACGCTTGCATCTCCTCCTACCACATCCATTGTCTGAACCC
 CCCACTGCCTGACATTCCAATGGCGAATGGCTGTGCCACGATGCACATGTCTGTGCTGAAGGGCCGT
 GTTCAGAAGATCTTGCAATGGCGATGGGGGAGCCACCTGTGGCAGTGCCAGCACCAGCAGGCAGACG
 GGAACCCAGACGTCCCACCCCTCGTCTCTTCAAGGCAGATCAGAGCGAGAGTTCTTTGTCAAGTGGGT
 GGGACTGTCTACTGGCACTGTTCTGGCCAAAGGAGCTTCAGCTGGAATCTTCCACTTGGTAAATGTAC
 GGAACTATCAACGGAAAAATGACATGGACGAGCCCGCCGCTGGACTATGGCTCTGGTGAAGTATG
 GGAAGAGTGACAAGCGCAAGGTGAAGGACCCGCACTATGCGGAGATGGAGGAGAAGTACTACCGTTTCGG
 CATCAAGCCGGAGTGGATGACTGTCCACCGCATATTAACCATAGTATGGATAAAAAGGGGAACTACCAC
 TACCTTGTGAAATGGAAGGATCTGCCTTACGACCAGTCCACGTGGGAGGAGGATGAGATGAACATCCAG
 AGTACGACGACCATAAGCAGAGCTACTGGAGACCCGTGAGCTAATTATGGGCGAGGACCCCGCACAGCC
 TCGAAAGTATAAGAAGAAGAAGAAGGAGTTACAGGGTGTGGCCCTCCAGTTCCACTACTAACGATCCA
 ACAGTGAATATGAGACTCAGCCAAGGTTATCACAGCCACGGGCGGCACACTGCACATGTATCAGCTGG
 AAGGGCTGAAGTGGCTGCGCTTCTCGTGGGCCAAGGCACTGACACGATCCTGGCGGATGAGATGGGGCT
 GGGCAAGACCATCAAACCATCGTCTTCTACTCACTGTATAAGGAGGGCCACAAAAAGGTCCCTTC
 CTGGTGAGTGTCCACTCTCCACCATCATCAACTGGGAACGGGAGTTCAGATGTGGGCACCCAAGTCT
 ATGTGGTACATATACGGGCGACAAGGACAGCCGGGCCATCATAAGAGAAAACGAGTTTTTCGTTGAGGA
 TAATGCCATAAAAAGGCGGGAAGAAAGCTTTCAAGATGAAGAGAGAGGCACAGGTGAAGTTCATGTCTT
 CTGACATCATACGAGCTGATCACCATCGATCAGGCGGCGCTTGGCTCCATCCGCTGGGCCTGTCTTGTGG
 TGGATGAGGCTCATCGACTCAAGAACAACAGTCCAAGTTTTTCAGGGTCTCAATGGCTACAAGATAGA
 TCATAAGTTGTTGCTGACGGGGACCCCGCTGCAGAACAACCTGGAGGAGCTTCCACCTTCTCACTTC
 CTCACCCAGAGAGGTTCAACAACCTGGAGGGCTTCTTGGAGGAGTTTCCGACATCAAAAGAGGACC
 AGATTAAGAAACTGCATGATTTACTGGGCCACATATGCTTCGGAGACTCAAGCGGATCTTTTAAAGAA
 CATGCCACGCAAGACCGAGCTCATTGTTGAGTGGAGCTAAGCCCATGCAGAAGAAATACTACAAGTAC
 ATCCTAACTCGAAATTTTGGGCTTGAATTTCTGAGGTGGTGGGAACCAAGTGTCCCTGCTTAAACATCA
 TGATGGACCTTAAGAAGTGTGCAACCACCCGTACCTCTTCCCGTGGCTGCTATGGAGTCTCCTAACT
 CCCAGTGGGCTTATGAGGGTGGGGCGCTTATTAAGTCATCAGGGAAGCTGCTGCTGCTGCAGAAGATG
 CTGCGCAAGCTGAAGGAGCAAGGACACAGAGTGTCTCATCTTCTCCAGATGACCAAAATGTTAGACCTTC
 TGGAGGACTTCTAGACTATGAAGGCTAAGTATGAGCGCATCGATGGTGGTATCACGGGCGCCCTCAG
 GCAGGAGGCCATTGATCGCTTCAATGCCCTGGTGCCCAACAGTCTGCTTCTCTCTGCCACCCGAGCT
 GGTGGCCTGGGCATCAACTTGGCCACTGCTGACACTGTATCATCTTCGATTCTGACTGGAACCCCAT
 ATGACATCCAGGCTTACGACAGCCCATCGGATTGGCCAGGCCAACAAAGTGTATTTACCGTTTTGT
 GACCCGAGCCTCTGTGGAAGAACGAATCACACAGGTGGCTAAGAGAAAAGTATGCTGACACACCTAGTG
 GTGCGGCCAGGCTGGGCTCCAAGGCTGGCTCCATGTCCAAGCAGGAGCTGGACGACATCCTCAAATTTG
 GCACCGAGGAGCTATTCAAAGATGAAAAAGAGGAGAGAATAAGGAGGAGGATAGCAGTGTGATCCACTA
 TGACAATGAAGCCATCGCTCGACTGTGGACCGTAACCCAGGATGCGACTGAGGACACGGATGTGCAGAAC
 ATGAACGAATACCTCAGCTCCTTCAAGGTGGCACAGTATGTCTGCGTGAAGAAGACAAGATTGAGGAGA
 TCGAGCGAGAGATCATCAAGCAGGAGGAGAATGTGGATCCTGACTACTGGGAGAAGCTACTGAGACATCA
 CTATGAGCAGCAGCAAGAAGACCTGGCCGCAACCTAGGCAAGGGCAAGCGGGTTAGAAAGCAGGTTAAC
 TACAACGATGCCGCCAGGAGGATCAAGACAACAGTCAAGTACTCAGTGGGGTCCGAGGAAGAGGATG
 AAGACTTTGATGAGCGTCTGAAGGCCGTGACAGTCAAAGAGGAGCTTCGAAATGAGAAGGACAAGCC
 ACTGCCTCCATTGCTGGCTCGGGTTGGGGCAACATTGAAGTACTGGATTCAATACTCGACAACGGAAG
 GCCTTCTTAAACGCTGTGATGCGCTGGGGATGCCACCCAGGACGCGTTACCACACAGTGGCTAGTGA
 GAGACCTGAGGGGCAAAACGGAGAAGGAGTTTAAAGCCTATGTGTCTTTGTTTATGCGCCATCTGTGTGA
 GCCTGGGGCAGATGGCTCCGAAACGTTTGGGATGGGGTCCCTCGGGAGGGGCTGAGTCCGACGAGGTG
 TTGACCCGATTGGAGTCATGTCTCTCGTCAAGAAGAAGGTCCAAGAGTTTGGAGCATATCAATGGACGCT
 GGTCAATGCCAGAGCTGATGCCTGACCCAGTGTGAGTCCAAGCGCTTCCAGAGCCTCCTCTCCAAC
 CAAAACATCTCCACCACTCCTGAGGCTTCTACAACCAACAGTCTTGTACCTCTAAGCCTGCTACTCCA
 GCTCCAAGTGAGAAGGGAGATGGTGTGAGGACACCGCTGGACAAGGATGACACTGAGAACCAGGAAGAGA
 AGCCAGAGAAGAACAGCAAAAGTGGGGGAAAAGATGGAGGCAGAGGTGATTCTCCAGCCAGCCCCATC
 ACTGGGAGAACGGCTAGAACACAGGAAAATTTCTTTAGAGGATGAAGCACCAGGGGTACCTGGAGAGACA
 GAGCCTGAACCTGGATACAGAGGAGACAGGGAGAAGTCTGCCTCAGAGCCAACACCAGGAGAAGGGGGG

AGGAGAAGCCATTGGATGTACAGGAACACAGGGAGAGGACGGAGGGGAAACAGGGGATTTGGGCAAGAG
AGAAGATGTAAAAGCCGATCGGGAGCTTCGACTTGGGCCTCCTCGAGATGAGCCACGGCCAATGGGCGC
CGTGAGGAGAAGGTGGAGAAGCCGAGATTCATGTTCAACATTGCCGATGGTGGTTTCACAGAGCTGCACA
CATTGTGGCAGAATGAGGAACGAGCAGCTATTCCTCGGGGAAACTCAATGAGATCTGGCACCGGAGGCA
TGACTACTGGCTTCTGGCTGGCATTGTCCTCCATGGCTATGCCCGGTGGCAAGACATCCAGAATGACGCT
CAGTTTGCCATTATCAATGAACCATTTAAAACGGAAGCCAATAAGGGGAACTTCCTGGAGATGAAAAATA
AATTCTGGCCCCGAGGTTCAAGCTCCTGGAGCAGGCGCTGGTGATCGAGGAGCAGCTGCCGCCGGCGGC
CTACCTGAACCTGTCACAGGAGCCGGCGCACCCCGCCATGGCCCTCCACGCCCGCTTGCCGAGGCCGAG
TGCCTAGCCGAGAGCCACCAGCACCTCTCCAAGGAGTCGCTGGCAGGGAACAAGCCAGCCAACGCTGTCC
TGACAAGGTTCTGAACCAGCTGGAGGAATTGCTGAGCGACATGAAGGCAGATGTGACCCGCTGCCAGC
CACGCTGTCCCGAATACCCCCATCGCAGCCCGCCTTCAGATGTCCGAGCGCAGCATCCTCAGCCGGCTG
GCCAGCAAGGGCACGGAGCCTCACCCACACCGGCCTTCCCCGGGTCTTACGCCACACCTCCGGGGT
ACGGGGCAGCCTTCAGCGCCGACCCGTAGGGGCCCTGGCCGCCGAGGCGCCAATTACAGCCAGATGCC
TGCAGGGTCTTCATCACAGCCACCACCAACGGCCCTCCAGTGCTGGTGAAGAAAGAGAAGGAAATGGT
GGGGCGTTGGTATCAGACGGGCTGGGGCTGGATCGGAAGGAGCCCGAGCAGGGGAGGTGATTTGTATAG
ACGAC

AGCGGACCGACGCGTACGCGGCCGCTCGAG - GFP Tag - GTTTAA

Protein Sequence: >MG224954 representing NM_146019
 Red=Cloning site Green=Tags(s)

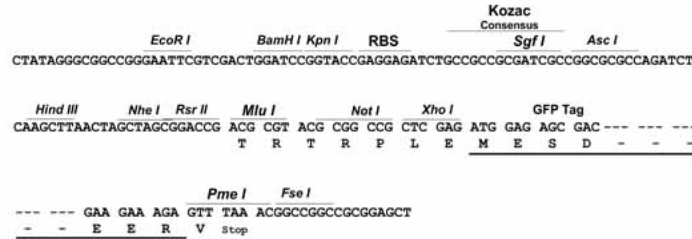
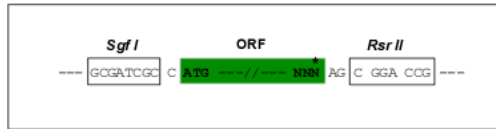
MASPLRDEEEEEEMVSEEEEEEEEGDEEEEEVEAADEDEDEEDEEGLGRGPGHDSRDRHSPPSCH
 LFPPPPPLPPPPPDKDDIRLLPSALGVKKRKRGPKKQKENKPKRKRKKLDSEEEFGSERDEYREKS
 ESGGSEYGTGPRKRRRKHREKKEKTKRRKRGEEDGGHKQVEQKSSATLLL TWGLEDVEHVFSEEDYHT
 LTNKAFSQFMRPLIAKKNPKIIPMSKMMTILGAKWREFSANNPFKGSAAAVAAAAAAAAAAVAEQVSAV
 SSATPIAPSGPPPALPPPAPPEIQPPPIIRAKTKEGKGPCHKRRNKSPRVPDGRKKLRGKKMAPLKIKLG
 LLGGKRRKAGSCAFQSEEGHEPEAEESDLDSGSVHSASGWPDPVRAKLLKGRPRGKRRKVLGCPAVTG
 EEEVDGYETDHQDYCEVCQGGGIIILCDTCPYHLVCLDPELDRAPEGKWSCPHCEKEGVQWEAKEEEE
 EYEEEGEEGEKEEEDHMEYCRVCKDGGELLCCDACISSYHIHCLNPPLPDIPNGEWLCPRCTCPVLKGR
 VQKILHWRWGEPPVAVPAPQQADGNPDVPPRPLQGRSEREFFVKWVGLSYWHCSWAKELQLEIFHLV
 RNYQRKNDMDEPPPLDYGSGEDDGKSDKRKVKDPHYAEMEEKYYRFGIKPEWMTVHRIINHSMDDKKNYH
 YLVKWKDLPYDQSTWEEDEMNIPYDDHKQSYWRHRELIMGEDPAQPRKYKKKKELQDGGPPSSPTNDP
 TVKYETQPRFITATGGTLHMYQLEGLNWLRF SWAQGTDTILADEMGLGKTIQTI VFLYSLYKEGHTKGF
 LVSAPLSTIINWEREFQMWAPKFYVVTYTGDKDSRAIIRENEFSFEDNAIKGGKAFKMKREAQVKFHLV
 LTSYELITIDQAALGSIRWACL VVDEAHLKNNQSKFFRVLNGYKIDHKLLL TGTPLQNNLEELFHLLNF
 LTPERFNNLEGLFEFADISKEDQIKKLDLHLLGPHMLRRLKADVFNMPAKTELIVRVELSPMQKKYKY
 ILTRNFALNSRGGGNQVSLNIMMDLKKCCNHPYLPVAAMESPKLPSGAYEGGALIKSSGKLLLLQKM
 LRKLKEQGHVLFISQMTKMLDLEDFLDYEGYKERYIDGGITGALRQEAIDRFNAPGAQQFCFLSTR
 GGLGINLATADTVIIFSDWNPHNDIQAFSRAHRIGQANKVMIYRFVTRASVEERITQVAKRKMMLTHLV
 VRPGLGSKAGSMKQELDDILKFGTEELFKDENEGENKEEDSSVIHYDNEAIARLLDRNQDATEDTDVQN
 MNEYLSSFKVAQYVREEDKIEEIEREIKQEENVDPDYWEKLLRHHYEQQEDLARNLKGKRVKQVN
 YNDAAQEDQDNQSEYSVGSEEEDEDFDERPEGRRQSKRQLRNEKDKPLPPLLARVGGNIEVLGFNTRQRK
 AFLNAVMRWGMPPQDAFTTQWLVRDLRGKTEKEFKAYVSLFMRHLCEPGADGSETFADGVPREGLSRQQV
 LTRIGVMSLVKKKVQFEHINGRWSMPELMPDPSAESKRSSRASSPTKTSPTTPEASTTNSPCTSKPATP
 APSEKGDGVRTPLDKDDTENQEEKPEKNSKVGEKMEAEVDSPSPAPSLGERLEHRKILLEDEAPGVPGET
 EPEPGYRGDREKSASEPTPGERGEEKPLDVQEHRETEGETGDLGKREDVKADRELRLGPPRDEPRNGR
 REEKVEKPRFMFNIADGGFTELHTLWQNEERAAISSGKLNIEIWHRRHDYWLLAGIVLHGYARWQDIQNDA
 QFAIINEPFKTEANKGNFLEMKNKFLARRFKLLEQALVIEEQLRRAAYLNL SQEP AHPAMALHARFAEAE
 CLAESHQHL SKESLAGNKPANAVLHKVLNQLLELLSDMKADVTRLPATLSRIPPIAARLQMSERSILSRL
 ASKGTEPHPTAFPPGPYATPPGYGAAFS AAPV GALAAAGANYSQMPAGSFITATTNGPPVLVKKKEMV
 GALVSDGLGLDRKEPRAGEVICIDD

SGPTRRRLE - GFP Tag - V

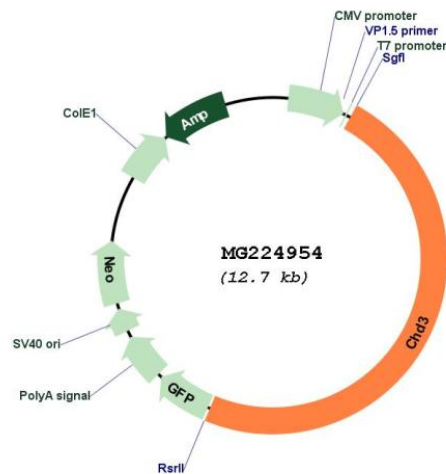
Restriction Sites: SgfI-RsrII

Cloning Scheme:

Cloning sites used for ORF Shuttling:



Plasmid Map:



ACCN: NM_146019

ORF Size: 7293 bp

OTI Disclaimer: The molecular sequence of this clone aligns with the gene accession number as a point of reference only. However, individual transcript sequences of the same gene can differ through naturally occurring variations (e.g. polymorphisms), each with its own valid existence. This clone is substantially in agreement with the reference, but a complete review of all prevailing variants is recommended prior to use. [More info](#)

OTI Annotation: This clone was engineered to express the complete ORF with an expression tag. Expression varies depending on the nature of the gene.

Components:	The ORF clone is ion-exchange column purified and shipped in a 2D barcoded Matrix tube containing 10ug of transfection-ready, dried plasmid DNA (reconstitute with 100 ul of water).
Reconstitution Method:	<ol style="list-style-type: none">1. Centrifuge at 5,000xg for 5min.2. Carefully open the tube and add 100ul of sterile water to dissolve the DNA.3. Close the tube and incubate for 10 minutes at room temperature.4. Briefly vortex the tube and then do a quick spin (less than 5000xg) to concentrate the liquid at the bottom.5. Store the suspended plasmid at -20°C. The DNA is stable for at least one year from date of shipping when stored at -20°C.
RefSeq:	<u>NM_146019.4, NP_666131.3</u>
RefSeq Size:	6168 bp
RefSeq ORF:	6168 bp
Locus ID:	216848
Cytogenetics:	11 B3