

Product datasheet for **MG224949**

Galnt7 (NM_001167981) Mouse Tagged ORF Clone

Product data:

Product Type:	Expression Plasmids
Product Name:	Galnt7 (NM_001167981) Mouse Tagged ORF Clone
Tag:	TurboGFP
Symbol:	Galnt7
Synonyms:	A1225872
Mammalian Cell Selection:	Neomycin
Vector:	pCMV6-AC-GFP (PS100010)
E. coli Selection:	Ampicillin (100 ug/mL)



[View online »](#)

ORF Nucleotide
Sequence:

>MG224949 representing NM_001167981
Red=Cloning site Blue=ORF Green=Tags(s)

TTTTGTAATACGACTCACTATAGGGCGGCCGGAATTCGTCGACTGGATCCGGTACCGAGGAGATCTGCC
GCCCGCATCGCC

ATGAGGCTGAAGATCGGGTTCATCTTACGCAGTTTCTGGTGGTGGGAAGCTTCTGGGGCTCGTGGTCC
TCTGGTCTTCCCTGTCTCGCGGCCGACGACCAGAGCCCACTGAGCAGGATGAGGGAAGACAGAGATGT
CAATAACCCCTTGCCTAACCGAGGAGGCAATGGACTAGCTCCTGGAGATGACAGATTCAAACCTGTGGTA
CCATGGCCTCATGTTGAAGGAGTAGAAGTGGACTTAGAGTCTATTAGAAGAAAAACAAGCCAAAAATG
AACAGGAGCGCCATGCTGGAGGAGATCCAGAGAGACGTAATGCAGAGGCAGTACCTTACATTTAAGCC
TCAGACCTTACCTACCGTATCCTGTGCTACGCCAGGGGTCTCGGGAACCTTGAACCCAAAAGAACCC
GAGCCTCAGGAGTGGTGGTGGCCCTGGAGAGAAAGCCAAGCCATTGGTTCTGGGACCAGAATACAAC
AAGCAGTTCAAGCCAGCATTAAAGGATTTGGATTTAACATGGTGGCAAGTACATGATCTCACTGGACCG
CAGCGTCAATGACTTACGCCAAGAAGAATGCAAGTATTGGCACTATGATGAAAACCTGCTTACTTCAAGC
GTTGTCATTGTCTTCCATAATGAAGGATGGTCAACCCTCATGAGGACAGTCCACAGTGTAAATCAAAGGA
CACCAAGGAAGTACTTAGCAGAAATCGTGTAAATTGATGACTTACGCAATAAAGAACACTTAAAAGAGAA
ACTGGATGAGTATATAAAGCTATGGAATGGCCTCGTGAAGGTATTTCAAATGAGAGAAGAGAGGGTTTG
ATTCAGCTCGGAGCATTGGCGCACAGAAGGCTAAACTCGGACAGGTTTTGATATACCTTGATGCCCACT
GTGAGGTGGCAGTTAACTGGTATGCTCCACTTGTAGCCCCATATCTAAGGACAGAGCTACATGACTGT
GCCTCTAATAGATTACATAGACGGGAATGATTATTCATTGAACCACAGCAAGGTGGGGATGAAGATGGT
TTTGCCAGAGGGCCTGGGACTGGAGTATGCTATGGAAACGTATCCCACTAAGCCACAAGGAAAAGGCCA
AAAGAAAGCATAAAACTGAGCCTTATCGTCTCCAGCTATGGCGGGTGGATTGTTTGCCATAGAGAAGGA
CTTCTTCTCGAACTGGGTCTCTATGATCCTGGTCTCCAGATCTGGGGTGGTGAACCTTTGAAATTTCA
TACAAGATCTGGCAGTGCGGTGGCAAATGTTATTTGTGCCTTGTCTCGTGTGGGCACATCTACCGTC
TTGAGGGCTGGCAAGGAAACCCCCACCCCTTTACGTTGGCTCCTCTCCAACCTGAAGAATTATGTTAG
AGTCGTGGAAGTCTGGTGGGATGAATAAAAGACTACTTCTATGCTAGCCGCTCCTGAGTCAAAGGCGCTG
CCCTACGGGGACATATCTGAGCTGAAGAAATTCGAGAAGATCACAACTGCAAAAGTTTCAAGTGGTTTA
TGAAGAAATCGCTTATGACATCACTGCCCACTACCTTTGCCCCCAAGAAATGTCGAGTGGGGTGAAT
CCGAGGCCTCGAACTGCATACTGTATTGATAGCATGGGGAAGACGAATGGAGGCTTCGTGGAGCTAGGA
CCCTGCCACAGGATGGGTGGGAACCAGCTTTCCGAATCAATGAAGCAAACCAGCTCATGCAGTACGACC
AGTGTGTTGACAAAAGGGCCTGATGGATCCAAGTCATGATCACACACTGTAACTAAATGAATTTAAGGA
ATGGCAGTACTTCAAGAGCCTGCACAGTTTACGCACATCACTTCCGGAAAGTGCTTAGATCGATCGGAG
GTCCTGCATCAAGTGTTCATCTCCACCTGTGACTCCAGTAAAATGACTCAGAAGTGGGAGATGAATAACA
TCCACAGTGTT

ACGCGTACGCGGCCGCTCGAG – GFP Tag – GTTTAA

Protein Sequence: >MG224949 representing NM_001167981
 Red=Cloning site Green=Tags(s)

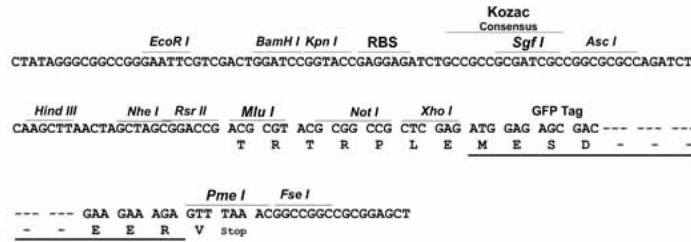
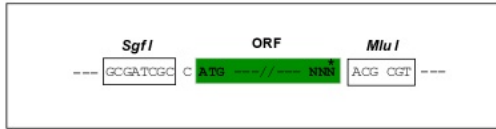
MRLKIGFILRSLLVVGSFLGLVVLWSSLSSRPDDQSPLSRMREDRDVNNPLPNRGGNGLAPGDDRFKPVV
 PWPVHVEGVEVDLESIRRNKAKNEQERHAGGDSQRDVMQRQYLTFKPQTFYRDPVLRPGVLGNFEPKEP
 EPHGVVGGPGEKAKPLVLGPEYKQAVQASIKEFGFNMVASDMISLDRSVNDRQEECKYWHYDENLLTSS
 VVIVFHNEGWSTLMRTVHSHVIRTPRKYLAEIVLIDDFSNKEHLKEKLDEYIKLWNGLVKVFRNERREGL
 IQARSIGAQAQKAKLGQVLIYLDACEVAVNWAYAPLVAPISKDRATCTVPLIDYIDGNDYSIEPQQGGDEDG
 FARGAWDWSMLWKRIPLSHKEKAKRKHKTEPYRSPAMAGGLFAIEKDFEFELGLYDPGLQIWGGENFEIS
 YKIWQCGGKLLFVPCSRVGHYRLEGWQGNPPPLYVGSSTLKNYVRVVEVWDEYKDYFYASRPESKAL
 PYGDISELKKFREDHNCKSFKWFMEIAYDITAHYPLPPRNVEWGEIRGLETAYCIDSMGKTNGGFVELG
 PCHRMGGNQLFRINEANQLMQYDQCLTKGPDGSKVMITHCNLNEFKEWQYFKSLHRFTHITSGKCLDRSE
 VLHQVFISTCDSKMTQKWEMNNIHSV

TRTRPLE - GFP Tag - V

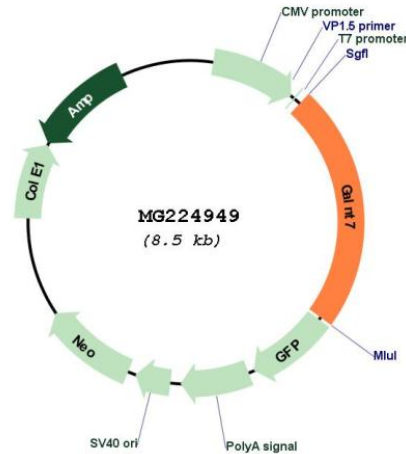
Restriction Sites: SgfI-MluI

Cloning Scheme:

Cloning sites used for ORF Shuttling:



Plasmid Map:



ACCN: NM_001167981

ORF Size: 1971 bp

OTI Disclaimer: The molecular sequence of this clone aligns with the gene accession number as a point of reference only. However, individual transcript sequences of the same gene can differ through naturally occurring variations (e.g. polymorphisms), each with its own valid existence. This clone is substantially in agreement with the reference, but a complete review of all prevailing variants is recommended prior to use. [More info](#)

OTI Annotation: This clone was engineered to express the complete ORF with an expression tag. Expression varies depending on the nature of the gene.

Components: The ORF clone is ion-exchange column purified and shipped in a 2D barcoded Matrix tube containing 10ug of transfection-ready, dried plasmid DNA (reconstitute with 100 ul of water).

Reconstitution Method:

1. Centrifuge at 5,000xg for 5min.
2. Carefully open the tube and add 100ul of sterile water to dissolve the DNA.
3. Close the tube and incubate for 10 minutes at room temperature.
4. Briefly vortex the tube and then do a quick spin (less than 5000xg) to concentrate the liquid at the bottom.
5. Store the suspended plasmid at -20°C. The DNA is stable for at least one year from date of shipping when stored at -20°C.

RefSeq: [NM_001167981.1](#), [NP_001161453.1](#)

RefSeq Size: 4363 bp

RefSeq ORF: 1974 bp

Locus ID: 108150

UniProt ID: [Q80VA0](#)

Cytogenetics: 8 B2

Gene Summary: Glycopeptide transferase involved in O-linked oligosaccharide biosynthesis, which catalyzes the transfer of an N-acetyl-D-galactosamine residue to an already glycosylated peptide. In contrast to other proteins of the family, it does not act as a peptide transferase that transfers GalNAc onto serine or threonine residue on the protein receptor, but instead requires the prior addition of a GalNAc on a peptide before adding additional GalNAc moieties. Some peptide transferase activity is however not excluded, considering that its appropriate peptide substrate may remain unidentified (By similarity).[UniProtKB/Swiss-Prot Function]