

Product datasheet for **MG224945**

Pde3a (NM_018779) Mouse Tagged ORF Clone

Product data:

Product Type:	Expression Plasmids
Product Name:	Pde3a (NM_018779) Mouse Tagged ORF Clone
Tag:	TurboGFP
Symbol:	Pde3a
Synonyms:	A930022O17Rik; C87899
Mammalian Cell Selection:	Neomycin
Vector:	pCMV6-AC-GFP (PS100010)
E. coli Selection:	Ampicillin (100 ug/mL)
ORF Nucleotide Sequence:	>MG224945 representing NM_018779 Red=Cloning site Blue=ORF Green=Tags(s)

TTTTGTAATACGACTCACTATAGGGCGGCCGGAATTCGTCGACTGGATCCGGTACCGAGGAGATCTGCC
GCC**CGATCGCC**

ATGGCAGTGGGGGCGAGGCCGCCAAGACCTAGCCAAGCCGGGCTCGGAGGGGCGAGTCCCGCCGTG
TGGCAAGAGGGAACCCGCCATCGTGGCGAGTCTCTCCATCCCCTCGGGGCTCCGGCTGTTGTTGGAG
AGCCCTGGCGCTGCAGCCGCTCCGGCGCTCGCCTCAACTCTCTCGGCGTGTGCGGGGCTCCCTGTCC
GTGCTGTGGCGCTGCTGGTGGGCTGGTCCGGCGGGAGGTCCGAGGCGAGCTGGAGAAGAGTCAGGAGG
CGGCGGCCGAGGAGGAGGAGGAAGGAGCCGAGGGGGCGTCTCCCGGGCCCTCGGGGAGGTGCTCC
CGGGGGCGCGCAGCTCAGCCCTTGGCTGCAGCCGGCCGCGCTGCTCTTCAGTCTCCTGTGCGCCTTC
TTCTGGATGGGCTTGTGCCTGCTGCGCGCCGGGTGCGCCTGCCTCTGGCCGTGCGCTGTTGGCCGCT
GCTGCGCCGGGAAGCGCTGGTGCAGCTCTCCTGGGCGTGGGGACGGTGCCTGCTGTGCTGCCCGC
CGCGGGGGTCTGCTCAGCTGCCAGGTGGCGGACATGGCTGGTGTGAGGCTGAGGCTGGGCGTCCCTC
ATGGTGCCTGGACTAGCGTGCTTAGGACGGTGGCCCTGGTTTCTCTGGAGAGTTCAAGTGCCTGGA
GACCTTACCTGGCATACTGGCGCCGTGCTTGGGCTGCTGTGCCAGGTACGCCGAGCAGATCCTGCC
GCAGTCTCCGGCCGGCTCCGCCAGGAGCGGTTTGGTCCCAGTTGAGCGCAGGACCAAGGAAGAG
ATCCGGGTGGAAGAGGAGGAGGCGGTCCAGCTCGGTGGTGGCCGCGAGATGTCGGCTGCAGTGGCA
AGTCTCACCGGAGGACCTCCCTGCCTGCATACCCAGGGAGCAGCTCATGGCCATTGAGATGGGACCA
CAAGAGAGGGCCACGAGGATCCCAGTCAGGAACAGCATCACTGTGGATATTGCTGTGATGGGTGAGGCC
CATGGCCTCATTACCGACCTCCTGGCCGACCTTCTCTGCCCCGAATGTGTGTACATCCTTGAGGGCCG
TAAGCAACTTGCTCAGCACCCAGCTCACCTTCCAGGCCATCCACAAGCCAGAGTGAACCCACCGTGAC
CTTCAGTGAGAATACTGCTCGACTCTGAGGAAGGCTTGGAGAAAGACAAGCAGGCCATTTCCAAG
CGCCTGAGAAGAAGTTTGCCTCCAGGCTTACTGAGAAGAGTCTCGTCAACTTGGACAACCTACCACCTCTG
CCACAGGTCTGCCACCTTGGAGCCTGCCAGTGGGAGGACCGCAGTGCCAGCATAAAGCCGACGA
AGCCCTTACCCAGTGTGTAATCCTGACTCTTGAATGCCCCAGGGTTGACGACTCTACCAAAAGC



[View online »](#)

```

AGATCCTTCACTTCATCCTATGCTGTCTCTGCAGCTAACCATGTAAAAGCTAAAAAGCAAAACAGGCCAG
GTGGCCTTGCTAAAAATTTCCCGCTCCCTCACCTCCTCCTCGCTCCCAGGGATCACCTGCCAGCAG
TCCTGTGACGAACAGTGTTCACAACAGTTCCAGAAATCCCTGAAGTAACCATCAAGCGAGGGCCTGGA
TCTCACAGGGCCTTAACCTACACCCAAAGTGCCCTGACCTGTCCCTCAGATCCCACCCCGTCTGTCA
TATGTAGCAGCTGTGGCAGACCTTATTCGAAGGGAATCCTGTGATGGACCCTCAGAGAGAAGTGGCC
AGCCATGTGAAACCAACAGAACAGATGACACTTCTCAAGTTACCTCCGATTATGAGACCAACAACAAC
AGTGACAGCAGTGACATTCTGCAGAATGAAGAGGAAGCTGAGTGCCAGAGAGAACCCAGAAAGACAT
CGGCTTGTGGCACCTATACTTCCAGACCATGATCTTCTGGACAAACCAATTCTTGCTCCAGAACCCT
GGTCATGGATAACCTGGACTCAATTATGGATCAGTTGAACACCTGGAATTTTCAATTTTGGATTAATG
GAAAATATAGGAAGAAAATGTGGCCGATTCTGAGCCAGGTATCATACTGACTGTTTGAAGACATGGGGC
TCTTTGAAGCCTTTAAAAATCCCGGTTAGGGAGTTTATGAATTACTTTTATGCTTTGGAGATCGGATAACG
GGACATTCCTTATCATAACAGAATCCATGCCACCGATGTTCTACACGCTGTGTGGTATCTCACAACACAG
CCGATTCTGGCCTCCCAAGTGTGATTGGTGATCAGGCTCAGCAAGCGACTCCGATTCTGACAGTGGAT
TTACACACGGACACATGGGATATGTGTTTTCAAAAATGTATCACGTGCCAGATGACAAAATATGGATGCCT
GTCTGGGAATATCCAGCCCTAGAGTTGATGGCTGTACGTTGTGCAGCCATGCATGACTACGATCAC
CCAGGGAGGACAAATGCCTTCTGGTTGCCACTAGTGCCCTCAGGCGGTGCTATACAACGACCGTTCTG
TCTGGAGAACCATCACGCCGCTGCAGCCTGGAATCTCTTCATGTCCCGCCAGAGTATAACTTCTTAGT
TAACCTGGACCACGTGGAATTAAGCACTTCCGCTTCTAGTCATTGAAGCGATTTTGGCTACTGACCTG
AAGAAACACTTTGACTTTGTAGCCAAAATTAACGCCAAGGTAACCGATGATGTCCGGATAGATTGGACCA
ATGAAAACGACCGTCTCCTGGTGTGCAGATGTGTATAAAGCTGGCTGACATCAACGGCCCTGCTAAATG
CAAAGAACTCCACCTGCGGTGGACAGAGGGCATCGCCAGCGAGTTTTATGAGCAGGGCGATGAAGAAGCC
AGCCTCGGCTGCCATAAAGTCCCTTTATGGACCGCTCTGCCCGCAGCTGGCCAATCTTCAGGAATCCT
TTATCTCACACATCGTGGTCTCTCTGCCACTCCTATGACTCTGCGGGACTCATGCCAGAAAATGGGT
AGATGACAGTGATGATTCGGGAGACACCGATGACCCGGAAGAAGAGGAGGAAGAGGCTGAAACACCCACAC
GAGGACGAAGCCTGTGAAAGCAGTATAGCTCCCGAAAAGAAAAGTTTCAAAGAAGGAGAATCTACTGCC
AAATAACTCAGCACCTTCTGCAGAACACATGATGTGGAAGAAAAGTATTGAAGAGGAACAGTGTTTATC
AGGCACAGAGAACCAGTCCCTGGACCAGGTCCTCTGCAGCATCCCTCAGAGCAGATCCAGGCTATCAAG
GAGGAAGAGGAAGAGAAGGGGAAGCCAAGAGCAGAGGAGACCCTGGCTCCACAGCCAGACCTG
    
```

ACGCGTACGCGGCCGCTCGAG - GFP Tag - GTTTAA

Protein Sequence:

>MG224945 representing NM_018779
 Red=Cloning site Green=Tags(s)

```

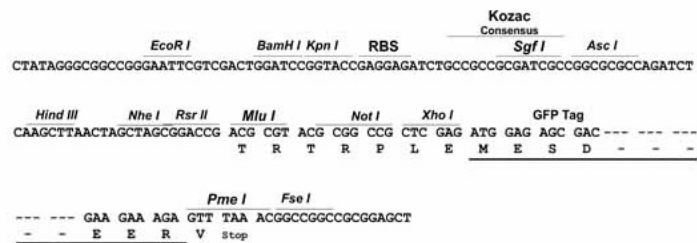
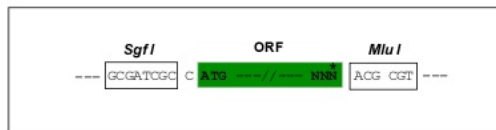
MAVRGEAAQDLAKPGLGGASPARVARGNHRHRGESSPPRGSGCCWRALALQPLRRSPQLSSALCAGSL
VLLALLVRLVGGVEGGELEKSQEAEEEEEEEGARGGVFPGPRGGAPGGGAQLSPWLQPAALLFSLLCAF
FWMGLCLLRAGVRLPLAVALLAACCAGEALVQLSLGVGDGRLLSLPAAGVLLSCLGGATWLVLRLRLGVL
MVAWTSVLRVALVSLERFKVAWRPYLAAYLAVLGLLLARYAEQILPQCSGPAPPRERFGSQLSARTKEE
IPGWKRRRRSSSVVAGEMSGCSGKSHRRTSLPCIPREQLMGHSEWDHKGPRGSQSGTSITVDIAVMGEA
HGLITDLLADPSLPPNVCTSLRAVSNLLSTQLTFQAIHKPRVNPVTFTSENYTCSDEEGLEKDKQAIK
RLRRSLPPGLLRVSSWTWTTSATGLPTLEPAPVRRDRSASIKPHEAPSPSAVNPDSWNAAPGLTTLTKS
RSFTSSYAVSAANHVKAKQNRPGGLAKISPVSPSSPPQSGPASPVSNSASQQFPESPEVTIKRGGP
SHRALTYTQSAPDLSPQIPPPSVICSSCRPYSQGNPADGPSERSGPAAMLKPNRTDDTSQVTSDYETNNN
SDSSDILQNEEEAECQREPQRKASACGTYTSQTMIFLDKPILAPEPLVMDNLDSDIMDQLNTWNFPIDFLM
ENIGRKCGRILSQVSYRLFEDMGLFEAFKIPVREFMNYFHALEIGYRDIPYHNRIHATDVLHAVWYLTQ
PIPLPSVIGDHGSASDSDSGFTHGHMGYVFSKMYHVPDDKYGCLSGNIPALELMALYVAAAMHDYDH
PGRTNAFLVATSAPQAVLYNDRSVLENHHAANAANLWLFMSRPEYNFLVNLDHVEFKHFRFLVIEAILATDL
KKHDFVAKFNAKVNDDYDGTWNTENDRLLVCQMCIKLADINGPAKCKELHLRWTEGIASEFYEQGDEEA
SLGLPISPFMDRSAPQLANLQESFISHIVGPLCHSYDSAGLMPGKWVDDSDSDGTDDEPEEEEEAEETH
EDEACCESSIAPRKKSFKRRRIYQITQHLLQNHMMWKKVIEEEQCLSGTENQSLDQVPLQHPSEIQAIK
EEEEKGPRAEETLAPQPD
    
```

TRTRPLE - GFP Tag - V

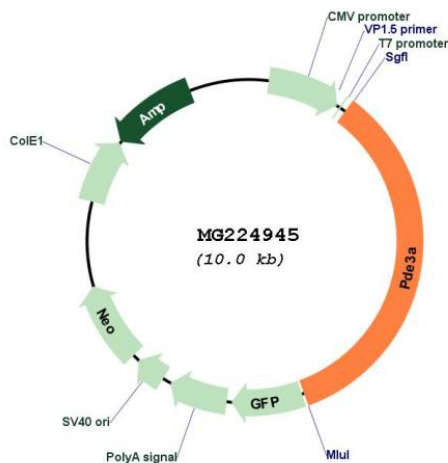
Restriction Sites: SgfI-MluI

Cloning Scheme:

Cloning sites used for ORF Shutting:



Plasmid Map:



ACCN: NM_018779

ORF Size: 3423 bp

OTI Disclaimer: The molecular sequence of this clone aligns with the gene accession number as a point of reference only. However, individual transcript sequences of the same gene can differ through naturally occurring variations (e.g. polymorphisms), each with its own valid existence. This clone is substantially in agreement with the reference, but a complete review of all prevailing variants is recommended prior to use. [More info](#)

OTI Annotation: This clone was engineered to express the complete ORF with an expression tag. Expression varies depending on the nature of the gene.

Components: The ORF clone is ion-exchange column purified and shipped in a 2D barcoded Matrix tube containing 10ug of transfection-ready, dried plasmid DNA (reconstitute with 100 ul of water).

Reconstitution Method:

1. Centrifuge at 5,000xg for 5min.
2. Carefully open the tube and add 100ul of sterile water to dissolve the DNA.
3. Close the tube and incubate for 10 minutes at room temperature.
4. Briefly vortex the tube and then do a quick spin (less than 5000xg) to concentrate the liquid at the bottom.
5. Store the suspended plasmid at -20°C. The DNA is stable for at least one year from date of shipping when stored at -20°C.

RefSeq: [NM_018779.2](#)

RefSeq Size: 4205 bp

RefSeq ORF: 3426 bp

Locus ID: 54611

UniProt ID: [Q9Z0X4](#)

Cytogenetics: 6 G2

Gene Summary:

Cyclic nucleotide phosphodiesterase with a dual-specificity for the second messengers cAMP and cGMP, which are key regulators of many important physiological processes. Involved in oocyte maturation.[UniProtKB/Swiss-Prot Function]