

## Product datasheet for **MG224940**

### Abcg5 (NM\_031884) Mouse Tagged ORF Clone

#### Product data:

Product Type:	Expression Plasmids
Product Name:	Abcg5 (NM_031884) Mouse Tagged ORF Clone
Tag:	TurboGFP
Symbol:	Abcg5
Synonyms:	cm; cmp; Ster; sterolin-1; tr; trac
Mammalian Cell Selection:	Neomycin
Vector:	pCMV6-AC-GFP (PS100010)
E. coli Selection:	Ampicillin (100 ug/mL)



[View online »](#)

**ORF Nucleotide Sequence:**

>MG224940 representing NM\_031884  
 Red=Cloning site Blue=ORF Green=Tags(s)

TTTTGTAATACGACTCACTATAGGGCGGCCGGGAATTCGTCGACTGGATCCGGTACCGAGGAGATCTGCC  
 GCC**CGGATCGCC**

ATGGGTGAGCTGCCCTTTCTGAGTCCAGAGGGAGCCAGAGGGCCTCACATCAACAGAGGGTCTCTGAGT  
 CCCTGGAGCAAGTTTCGGTCACGGGCACAGAGGCTCGGCACAGCTTAGGTGTCTGCATGTGTCTACAG  
 CGTCAGCAACCGTGTGGGCTTGGTGGAAATCAAATCATGCCAGCAGAAGTGGGACAGCAAATCCTC  
 AAAGATGTCTCCTGTACATCGAGAGTGGCCAGATTATGTGCATCTTAGGCAGCTCAGGCTCAGGGAAGA  
 CCACGCTGCTGGACGCCATCTCCGGGAGGCTGCGGCGCACTGGGACCCTGGAAGGGGAGGTGTTGTGAA  
 TGGCTGCGAGCTGCGCAGGGACCAGTCCAAGACTGCTTCTCCTACGCTCCTGCAGAGCGAGCTTTTTCTG  
 AGCAGCCTCACTGTGCGGAGACGTTGCGATACACAGCGATGCTGGCCCTCTGCCGAGCTCCGCGGACT  
 TCTACAACAAGAAGGTAGAGGCAGTCATGACAGAGCTGAGCCTGAGCCACGTGGCGGACCAAATGATTGG  
 CAGCTATAATTTTGGGGGAATTTCCAGTGGCGAGCGGCGCGAGTTTCCATCGCAGCCAACTCCTTCAG  
 GACCCCAAGGTATGATGCTAGATGAGCCAACACAGGACTGGACTGCATGACTGCAAATCAAATGTGCC  
 TTCTCTTGGCTGAGCTGGCTCGCAGGGACCGAATTGTGATTGTCACCATCCACCAGCCTCGCTCTGAGCT  
 CTTCCAACACTTCGACAAAATTGCCATCCTGACTTACGGAGAGTTGGTGTCTGTGGCACCCAGAGGAG  
 ATGCTTGGCTTCTTAATAACTGTGGTTACCCCTGTCTGAACATTCCAATCCCTTTGATTTTTACATGG  
 ACTTGACATCAGTGGACACCCAAAGCAGAGAGCGGAAATAGAAACGTACAAGCGAGTACAGATGCTGGA  
 ATGTGCCTTCAAGGAATCTGACATCTATCAAAAATTCTGGAGAACATTGAAAGAGCAGGATACCTGAAA  
 ACCTTACCACGTTCTTTCAAACAAAAGATCCTCTGGGATGTTGGCAAGCTTGGTGTCTGCTGATCA  
 GCGGAGTAACAAGAACTTAATGAGGAATAAGCAGGCAGTGATTATGCGTCTCGTTCAGAATCTGATCAT  
 GGGCCTTCTCCTCAATTTCTACCTTCTCCGCGTCCAGAACAACACGCTAAAGGGCGCTGTGCAGGACCGC  
 GTGGGGCTGCTCTATCAGCTTGTGGGTGCCACCCATACACCGCATGCTCAATGCTGTGAATCTGTTTC  
 CCATGCTGAGAGCCGTCAGCGACCAGGAGAGTCAAGATGGCCTGTATCATAAGTGGCAGATGCTGCTCGC  
 CTACGTGCTACACGCTCTCCCTTACAGCGTCATCGCCACGGTCATTTTACAGCAGTGTGTATTGGACT  
 CTGGGCTTGTATCCTGAAGTTGCCAGATTTGGATATTTCTCTGCTGCTTTTTGGCCCTCACTTAATTG  
 GAGAATTTCTAACACTTGTGCTGCTTGGTATAGTCCAAAACCTAATATTGTCAACAGTATAGTGGCTCT  
 GCTCAGCATCTCTGGGCTGCTTATTGGATCTGGATTTATCAGAAACATAACAAGAAATGCCATTCTTTA  
 AAAATCCTGGGTTATTTTACATTCAAAATACTGTTGTGAGATTCTCGTGGTCAATGAGTTTTACGGCC  
 TGAATTCACCTTGTGGTGGATCCAACACCTCTATGCTAAATCACCGATGTGCGCCATCACCAAGGGGT  
 CCAATTATCGAGAAAACCTGCCAGGTGCTACATCCAGATTCACGGCAAATTCCTCATCTTATATGGG  
 TTTATCCAGCTCTGGTCATCTAGGAATAGTGATTTTTAAAGTCAGGGACTACCTGATTAGCAGA

**ACGCGT**ACGCGGCCGCTCGAG - GFP Tag - GTTTAA

**Protein Sequence:**

>MG224940 representing NM\_031884  
 Red=Cloning site Green=Tags(s)

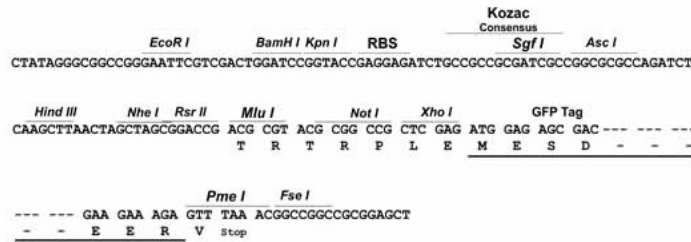
MGELPFLSPEGARGPHINRGSLSSELEQGSVTGTEARHSLGVLHVSYSVSNRVGPWWNIKSCQQKWRQIL  
 KDVSLYIESGQIMCILGSSGSGKTTLLDAISGRLRRTGTLEGEVFNVCGLRRDQFQDCFSYVLQSDVFL  
 SSLTVRETLRYTAMLALCRSSADFYNNKVEAVMTELSLHVADQMIGSYNFGGISSGERRRVSIAAQLLQ  
 DPKVMMLDEPTTGLDCMTANQIVLLLAELARRDRIVIVTIHQPRSELFQHFQDKIAILTYGELVFCGTPEE  
 MLGFFNNGYPCPEHSNPFDFYMDLTSVDTQSREREIETYKRVQMLECAFKESDIYHKILENIERARYLK  
 TLPTVPFKTKDPPGMFGKLGVLRRVTRNLMRNKQAVIMRLVQNLIMGLFLIFYLRLRVQNNLTKGAVQDR  
 VGLLYQLVGATPYTGMLNAVNLFPMLRAVSDQESQDGLYHKWQMLLAYVLHVLVPSVIATVIFSSVCYWT  
 LGLYPEVARFYGYSALLAPHLIGEFLLVLLGIVQNPINIVNSIVALLSISGLLIGSGFIRNIQEMPIPL  
 KILGYFTFQKYCCEILVNEFYGLNFTCCGSNTSMLNHPMCAITQGVQFIEKTCPGATSFRFTANFLILY  
 FIPALVILGIVIFKVRDYLSR

**TRTRPLE** - GFP Tag - V

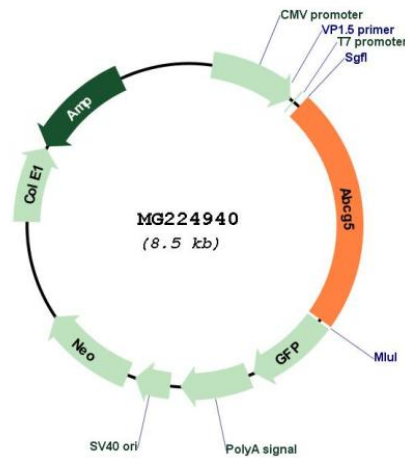
Restriction Sites: SgfI-MluI

Cloning Scheme:

Cloning sites used for ORF Shutting:



Plasmid Map:



ACCN: NM\_031884

ORF Size: 1956 bp

<b>OTI Disclaimer:</b>	The molecular sequence of this clone aligns with the gene accession number as a point of reference only. However, individual transcript sequences of the same gene can differ through naturally occurring variations (e.g. polymorphisms), each with its own valid existence. This clone is substantially in agreement with the reference, but a complete review of all prevailing variants is recommended prior to use. <a href="#">More info</a>
<b>OTI Annotation:</b>	This clone was engineered to express the complete ORF with an expression tag. Expression varies depending on the nature of the gene.
<b>Components:</b>	The ORF clone is ion-exchange column purified and shipped in a 2D barcoded Matrix tube containing 10ug of transfection-ready, dried plasmid DNA (reconstitute with 100 ul of water).
<b>Reconstitution Method:</b>	<ol style="list-style-type: none"><li>1. Centrifuge at 5,000xg for 5min.</li><li>2. Carefully open the tube and add 100ul of sterile water to dissolve the DNA.</li><li>3. Close the tube and incubate for 10 minutes at room temperature.</li><li>4. Briefly vortex the tube and then do a quick spin (less than 5000xg) to concentrate the liquid at the bottom.</li><li>5. Store the suspended plasmid at -20°C. The DNA is stable for at least one year from date of shipping when stored at -20°C.</li></ol>
<b>RefSeq:</b>	<a href="#">NM_031884.2</a> , <a href="#">NP_114090.1</a>
<b>RefSeq Size:</b>	2266 bp
<b>RefSeq ORF:</b>	1959 bp
<b>Locus ID:</b>	27409
<b>UniProt ID:</b>	<a href="#">Q99PE8</a>
<b>Cytogenetics:</b>	17 55.02 cM
<b>Gene Summary:</b>	The protein encoded by this gene is a member of the superfamily of ATP-binding cassette (ABC) transporters. ABC proteins transport various molecules across extra- and intra-cellular membranes. ABC genes are divided into seven distinct subfamilies (ABC1, MDR/TAP, MRP, ALD, OABP, GCN20, White). This protein is a member of the White subfamily, and functions as a half-transporter to limit intestinal absorption and promote biliary excretion of sterols. Disruption of this gene in mice results in thrombocytopenia, prolonged bleeding times, anemia, leukopenia, infertility, shortened life span and cardiomyopathy. Mice lacking this gene show symptoms of sitosterolemia. [provided by RefSeq, Nov 2015]