

## Product datasheet for **MG224939**

### Sox14 (NM\_011440) Mouse Tagged ORF Clone

#### Product data:

**Product Type:** Expression Plasmids  
**Product Name:** Sox14 (NM\_011440) Mouse Tagged ORF Clone  
**Tag:** TurboGFP  
**Symbol:** Sox14  
**Mammalian Cell Selection:** Neomycin  
**Vector:** pCMV6-AC-GFP (PS100010)  
**E. coli Selection:** Ampicillin (100 ug/mL)  
**ORF Nucleotide Sequence:** >MG224939 representing NM\_011440  
 Red=Cloning site Blue=ORF Green=Tags(s)

TTTTGTAATACGACTCACTATAGGGCGGCCGGAATTCGTCGACTGGATCCGGTACCGAGGAGATCTGCC  
 GCC**CGATCGCC**

ATGTCCAAACCTTCAGACCACATCAAGCGGCCCATGAATGCCTTCATGGTATGGTCCCAGGGCCAGCGGC  
 GCAAGATGGCCCAGGAAAATCCCAAGATGCACAACCTCGGAGATCAGCAAACGCCTGGCGCCGAATGGAA  
 GCTCCTGTCCGAGGCAGAGAAGCGGCCTTACATCGATGAAGCCAAAAGGCTGCGCGCCAACACATGAAG  
 GAGCACCTGACTACAAGTACCGGCCCGCGCAAGCCGAAGAACCTGCTCAAGAAGGACAGGTATGTCT  
 TCCCCCTGCCCTACCTGGGCGACACGGACCCGCTCAAGCGCGCCGCTGCCCGTGGGGCTTCCGACGG  
 CCTCCTGAGCGCGCCGAGAAAAGCCGGGCTTCTTGCCGCTGCCTCGGCACCTTACTCCCTGCTGGAC  
 CCTGCGCAATTTAGTTCCAGTGCATCCAGAAGATGGTGAAGTGCCCCACAGTTGGCCACCAGCGCGC  
 TGCCCTACCGCTCACCCCTGGGCTATCAGAACGGCGCCTTCGGCAGTCTCAGCTGCCCCAGCCAGCACAC  
 GCACACGCACCCGTCCCCACCAACCCGGGCTACGTGGTGCCTGTAAGTGTACCGCCTGGTCTGCCTCC  
 ACCCTGCAGCCCCCTGTCGCTACATCCTTCCAGGCATGACCAAGACTGGCATAGACCCTTATTCGT  
 CAGCCCACGCTACGGCCATG

AG**CGGACCG**ACGCGTACGCGGCCGCTCGAG - GFP Tag - GTTTAA

**Protein Sequence:** >MG224939 representing NM\_011440  
 Red=Cloning site Green=Tags(s)

MSKPSDHIKRPMMNAFMVWSRQRRKMAQENPKMHNSEISKRLGAEWKLLSEAEKRPYIDEAKRLRAQHMK  
 EHPDYKYRPRRKPNLLKKDRYVFLPYLGDTDPLKAAGLPVGASDGLLSAPEKARAFLLPPASAPYSLLD  
 PAQFSSSAIQKMGVPHLTLATSALPYASTLGYQNGAFGLSLCPSQHTHTHPSTNPGYVVPNCNTAWSAS  
 TLQPPVAYILFPGMTKTGIDPYSSAHATAM

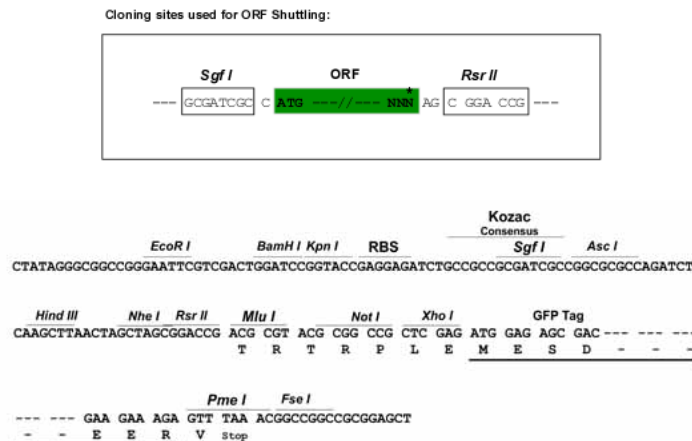
SGP**TRRRLE** - GFP Tag - V



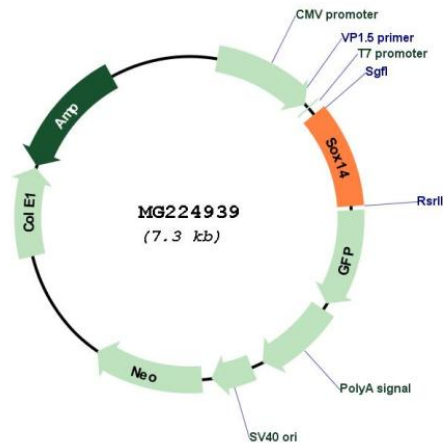
[View online »](#)

Restriction Sites: SgfI-RsrII

Cloning Scheme:



Plasmid Map:



ACCN: NM\_011440

ORF Size: 720 bp

OTI Disclaimer: The molecular sequence of this clone aligns with the gene accession number as a point of reference only. However, individual transcript sequences of the same gene can differ through naturally occurring variations (e.g. polymorphisms), each with its own valid existence. This clone is substantially in agreement with the reference, but a complete review of all prevailing variants is recommended prior to use. [More info](#)

OTI Annotation: This clone was engineered to express the complete ORF with an expression tag. Expression varies depending on the nature of the gene.

<b>Components:</b>	The ORF clone is ion-exchange column purified and shipped in a 2D barcoded Matrix tube containing 10ug of transfection-ready, dried plasmid DNA (reconstitute with 100 ul of water).
<b>Reconstitution Method:</b>	<ol style="list-style-type: none"><li>1. Centrifuge at 5,000xg for 5min.</li><li>2. Carefully open the tube and add 100ul of sterile water to dissolve the DNA.</li><li>3. Close the tube and incubate for 10 minutes at room temperature.</li><li>4. Briefly vortex the tube and then do a quick spin (less than 5000xg) to concentrate the liquid at the bottom.</li><li>5. Store the suspended plasmid at -20°C. The DNA is stable for at least one year from date of shipping when stored at -20°C.</li></ol>
<b>RefSeq:</b>	<u><a href="#">NM_011440.1</a></u> , <u><a href="#">NP_035570.1</a></u>
<b>RefSeq Size:</b>	2075 bp
<b>RefSeq ORF:</b>	723 bp
<b>Locus ID:</b>	20669
<b>UniProt ID:</b>	<u><a href="#">Q04892</a></u>
<b>Cytogenetics:</b>	9 52.11 cM
<b>Gene Summary:</b>	Acts as a negative regulator of transcription.[UniProtKB/Swiss-Prot Function]