

## Product datasheet for **MG224931**

### Elf2 (NM\_023502) Mouse Tagged ORF Clone

#### Product data:

Product Type:	Expression Plasmids
Product Name:	Elf2 (NM_023502) Mouse Tagged ORF Clone
Tag:	TurboGFP
Symbol:	Elf2
Synonyms:	2610036A20Rik; A230104O07Rik; AW111824; BB183398; EU32; NERF; NERF-1A; NERF-1B; NERF-2
Mammalian Cell Selection:	Neomycin
Vector:	pCMV6-AC-GFP (PS100010)
E. coli Selection:	Ampicillin (100 ug/mL)



[View online »](#)

**ORF Nucleotide Sequence:**

>MG224931 representing NM\_023502  
 Red=Cloning site Blue=ORF Green=Tags(s)

TTTTGTAATACGACTCACTATAGGGCGGCCGGAATTCGTCGACTGGATCCGGTACCGAGGAGATCTGCC  
 GCC**CGCATCGCC**

ATGGCATCGGCGGTGTTGACAGCGGAGGCTCTGCTCTGGAGCTTCTAGCGATGGAGGAGAAAAATCAAG  
 AGGGAGGTGACACGGGCCCTGACTGCCCGCAGTGATTGTGGAGCCAGTCCAGTGCGAGGTTAGAGCA  
 GGGCTATGCTGCCAGGTGCTGGTCTATGACGACGAGACTTATATGATGCAGGATGTGGCGGAAGAACAG  
 GAAGTTGAGACGGAGAATTCAGAAACAGTGAAGCATCAGTTCACAGCAGTAATGCTCACTGTACGGATA  
 AGACCATGAAGCTGCTGAAGCCCTGCTTCATATGGAATCTCCTACCTGCTTGAGGGATTCAAGAAGTCC  
 TGTGGAAGTGTTCCTCCTTGTATATCAACTCCAGAGTTTATCCATGCTGCGATGAGGCCGGATGTC  
 ATCACAGAGACTGTAGTGGAGGTGCCACAGAAGAGTCTGAGCCGATGGATGCCTCGCTATCCCTACTT  
 CACCAGACAGCCACGAACCAATGAAAAAGAAAAAGTTGGCCGTAACCAAGACCCAGCAGTACCAGT  
 TTCCAATGGGTCTCCTGAGTTAGGAATCAAGAAGAAAGCCAGAGAAGGAAAAGGAAACACAACTATCTG  
 TGGGAGTTCTTTTAGATTTGCTTCAAGATAAAAAATACTTGTCAGGTATATTAATGGACTCAGAGAG  
 AAAAGGGCATATTCAAACTTGTGGACTCAAAGGCTGTCTCGAAGCTCTGGGGGAAGCATAAGAACAACCC  
 AGATATGAACTATGAAACCATGGGGCGAGCGTTAAGATATTACTACCAAGGGGAATTCCTGCAAGGTT  
 GAAGGACAGAGGCTTGTATATCAGTTCAAGGACATGCCAAAAACATAGTGGTCATTGATGATGACAAAA  
 GTGAGACCTGCCCTGAAGACTTGGCAGCAGCTGCTGATGACAAGTCTTTAGAACGAGTGTCACTATCTGC  
 AGAAAGTCTCTGAAGGCAGCAACTGCCGTCGAGGTGGGAAAACTCATCTCCTCTGAAGTGTCCAGA  
 GCAGAGAAGGGTGTGGCTAGAGTTGTGAACATCACCTCCCCTACTCACGACGTTCTCCAGGTCTCCTA  
 CTACCAGTGCACCTGTGTCAGCAGCAGCAGCTCCAAGGACAGTTGCTGTGGCAATGCAAGTCCCTGTGGT  
 AATGACCTCACTGGGCCAAAAGATTTACGCGGTGGCAGTTCAGTCAAGTCAATGCAGGCACAGGCTCGCCG  
 TTAATAACCGACACCAGTCCAGCCTCGGCCAGCTCTCCAAAAGTGTATCCAGACAGTCCCGACCGTGA  
 TGCCGGCTCCACTGAAAATGGAGACAGAATCACCATGCAGCCTGCCAAGATTATCACCATCCCCGCCAC  
 CCAGCTCGCACAGTGTCAACTCCAGGCAAAGTCAAACCTGACGGGGTCCAGGAAGCATTAACTTGTGGA  
 ACCCCACTGGCTGTGAGGGCACTACCCCTGTTTCAATAGCCACGGTACACCTGTAATGAGACTGTCTG  
 TGCTGCTCAGCAGGCTTCTGGCCAGACTCCTCCTCGAGTTATCAGTGCCTCTAAAAGGGCCGGAGGG  
 GAAATCAGAAGCCAAAAGCAGGAACACGATGTAAAACTTGCAGCTGGTAGAAGAGAAGGGGGCAGAC  
 GGCAATAAGACAGTAACCCACGTAGTGGTCGTCAGTGCCTGCTGCTATCGCCCTCCTGTGACTATGA  
 AAACCGAAGGGCTAGTGCAGTGTGAGAAA

**ACGCGT**ACGCGGCCGCTCGAG - GFP Tag - GTTTAA

**Protein Sequence:**

>MG224931 representing NM\_023502  
 Red=Cloning site Green=Tags(s)

MASAVVDSGGSALFLPSDGGENQEGDTPDCPAVIVEPVPSARLEQGYAAQVLVYDDEYMMQDVAEEQ  
 EVETENSETVEASVHSSNAHCTDKTIEAAEALLHMESPTCLRDSRSPVEVFPVPCISTPEFIHAAMRPDV  
 ITETVVEVSTEESEPMDASPIPTSPDSHEPMKKKVVGRKPKTQQSPVSNQSPELGIKKKAREGKGNNTYL  
 WEFLLDLLQDKNTCPRIKWTQREKGIKFLVDSKAVSKLWGHKHNKPDMMNYETMGRALRYYYQRGILAKV  
 EQRLVYQFKDMPKNIVVDDDKSETCPEDLAAAADDKSLERVSLAESLLKAATAVRGGKNSPLNCSR  
 AEKGVARVVNITSPTHGSSRSPTTAPVSAAAAPRTVRVAMQVPVMTSLGQKI SAVAVQSVNAGTGSP  
 LITSTSPASASSPKVVIQTVPTVMPASTENGDRITMQPAKIITIPATQLAQCQLQAQSNLTGSGSINIVG  
 TPLAVRALTPVSI AHGTPVMRLSVPAQQASGQTPPRVISALLKGPPEGKSEAKKQEHVDKTLQLVEEKGAD  
 GNKTVTHVVVVSAPSAIALPVTMKTEGLVTCEK

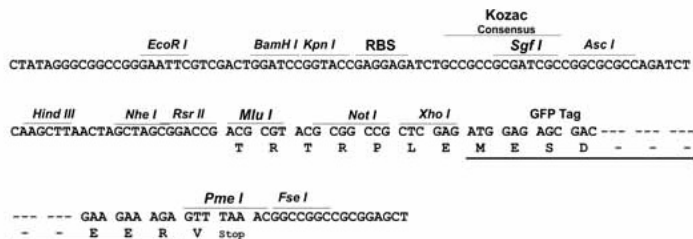
**TRTRPLE** - GFP Tag - V

**Restriction Sites:**

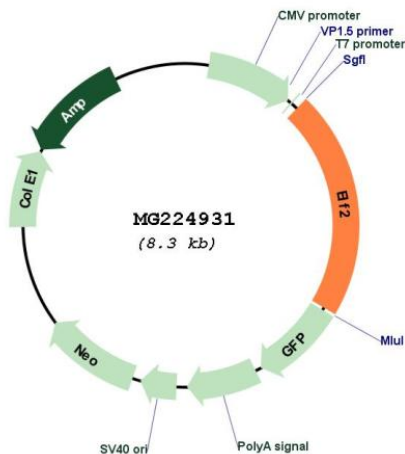
Sgfl-MluI

Cloning Scheme:

Cloning sites used for ORF Shutting:



Plasmid Map:



ACCN: NM\_023502

ORF Size: 1779 bp

<b>OTI Disclaimer:</b>	The molecular sequence of this clone aligns with the gene accession number as a point of reference only. However, individual transcript sequences of the same gene can differ through naturally occurring variations (e.g. polymorphisms), each with its own valid existence. This clone is substantially in agreement with the reference, but a complete review of all prevailing variants is recommended prior to use. <a href="#">More info</a>
<b>OTI Annotation:</b>	This clone was engineered to express the complete ORF with an expression tag. Expression varies depending on the nature of the gene.
<b>Components:</b>	The ORF clone is ion-exchange column purified and shipped in a 2D barcoded Matrix tube containing 10ug of transfection-ready, dried plasmid DNA (reconstitute with 100 ul of water).
<b>Reconstitution Method:</b>	<ol style="list-style-type: none"><li>1. Centrifuge at 5,000xg for 5min.</li><li>2. Carefully open the tube and add 100ul of sterile water to dissolve the DNA.</li><li>3. Close the tube and incubate for 10 minutes at room temperature.</li><li>4. Briefly vortex the tube and then do a quick spin (less than 5000xg) to concentrate the liquid at the bottom.</li><li>5. Store the suspended plasmid at -20°C. The DNA is stable for at least one year from date of shipping when stored at -20°C.</li></ol>
<b>RefSeq:</b>	<a href="#">NM_023502.2</a> , <a href="#">NP_075991.1</a>
<b>RefSeq Size:</b>	2688 bp
<b>RefSeq ORF:</b>	1782 bp
<b>Locus ID:</b>	69257
<b>UniProt ID:</b>	<a href="#">Q9JHC9</a>
<b>Cytogenetics:</b>	3 C
<b>Gene Summary:</b>	Probably transcriptionally activates the LYN and BLK promoters and acts synergistically with RUNX1 to transactivate the BLK promoter.[UniProtKB/Swiss-Prot Function]