

Product datasheet for **MG224918**

Ak5 (NM_001081277) Mouse Tagged ORF Clone

Product data:

Product Type:	Expression Plasmids
Product Name:	Ak5 (NM_001081277) Mouse Tagged ORF Clone
Tag:	TurboGFP
Symbol:	Ak5
Mammalian Cell Selection:	Neomycin
Vector:	pCMV6-AC-GFP (PS100010)
E. coli Selection:	Ampicillin (100 ug/mL)



[View online »](#)

ORF Nucleotide Sequence:

>MG224918 representing NM_001081277
 Red=Cloning site Blue=ORF Green=Tags(s)

TTTTGTAATACGACTCACTATAGGGCGGCCGGAATTCGTCGACTGGATCCGGTACCGAGGAGATCTGCC
 GCC**GCGATCGCC**

ATGAACACCAACGACGCCAAGGAGTACCTGGCCCGGAGGGACATTCTCAGCTTTTCGAGAGCCTGTCTCA
 ATGGCTTGATGTGTTCCAAGCCAGAAGACCCCATAGAGTACTTGGAAACTTGTTCACAGAAAGTCAAGGA
 GCTAGGAGGCTGTGACAAGGTGAAGTGGGACACATTTGTCAGCCAGGAAAAGAAGACGTTACCGCCCTA
 AATGGAGGACAATCACGGAGATCCTTCCTCCGAAATGTCATGCCTGAAAATTCAAACTTTCCATATCGGC
 GGTATGACCGGCTCCCTCCAATCCACCAGTTTTCCATAGAGAGTGACACGGACCTGTGGAGACGGCGGA
 GCTGATAGAAGAATATGAGGTTTTGACCCGACTAGACCTCGGCCAAAAATCATTCTTGCATAGGTGGT
 CCAGGAAGTGGAAAGGTTACTCAGAGTTTGAATTTGCAGAGCGGTATGGATTCCAGTACATCTCAGTGG
 GAGAATTATTGAGGAAGAAAATCCACAGTGCCAGCAGCAACAGAAAATGGAGTCTGATCGCCAAGATAAT
 CACCAATGGGGAGCTGGCCACAGGAGACAACAATTACGGAGATAAAACAAAAATTTGATGCAAATACCC
 GATGAAGAAGGCATTGTGATTGATGGATTTCCAAAGGGATTTGCCAGGCCTGTCTTTTGGAGACCAGA
 TCTGCACCCCTGACCTGGTGGTGTCTCTGGCTTGTGCCAACACAGAGGCTCAAGGAGAGGTTACAGAAGCG
 TGGCGAGCAGCAGGGGCGGCCAGATGACAACTGAAAGCAACCCAAAGGAGACTAGTGAACCTTCAAGCAG
 AATGCCGCCCCACTAGTGAAGTACTTCCAAGAGAAGGGACTCATCGTGACTTTTGTGATGCCGACCGAGATG
 AAGACGCAGTGTTCATGACATCAGCGTGGCCGTCGACAGCAAGCTGTTTCCAACAAAGAGGCTCCGAT
 GGATTCAGTGACCTTGACCCTTCCATGATGTTTGTGCTGGAGAGATTATTGACACAGGATCAGATTAC
 GATAACCAGGACGATGATCAGCTAAATGTATTTGGAGAAGACACAGAGGGAGGCTTCATGGAGGATTTGA
 GGAAGTGTAAAAATTTTTCTTGATGGTGGCCCTGGCTCTGGCAAAGGCACCCAGTGTGAGAAGTGGC
 AGAAAAATATGGCTTACCCATCTCTCTACTGGTGGAGCTCTGCCAGGAACTGACCTCAGAGTCAGAA
 AGAAGCAAATGATCCGTGACATCATGGAGCGTGGAGATCTGGTCCCTCGGGTGTGCTTCTGGAGCTGC
 TGAAGGAGGCCATGGTGGCCAGCCTGGGCAACACCAAGGGCTTCTGATTGACGGCTACCCCGGGAAGT
 GAAGCAAGGGGAAGATTTGGACGAAGGATCGGAGACCCACACTTGGTGTCTGCATGGACTGCTCAGCA
 GACACCATGACTAACCGCCTTCTCAGAGAAGCCAGAGCAGCCAGCGGGGGAGGACGGTCCAAGAGCA
 TTGCCAAGCGCTGGAGGCTACCACCGAGCGTCCATCCCGTCGTCACCTACTACGAGAGGAAAACACA
 GCTACGGAAGGTAATGCAGAGGGAACACCAGAGCAAGTTTTTCTCAGCTCTGCACAGCTATTGACTCT
 GTTTTC

ACGCGTACGCGGCCGCTCGAG - GFP Tag - GTTTAA

Protein Sequence:

>MG224918 representing NM_001081277
 Red=Cloning site Green=Tags(s)

MNTNDAKEYLARRDIPQLFESLLNGLMCSKPEDPIEYLETCLQKVKELGGCDKVKWDTFVSQEKKTLPLP
 NGGQSRRSFLRNVPENSFPYRRYDRLPPIHQFSIESDIDLSETAELIEEYEVFDPTRPRPKIILVIGG
 PGSGKGTQSLKIAERYGFQYISVGEELLRKKIHSASSNRKWSLIAKIITNGELAPQETTITEIKQLMQIP
 DEEGIVIDGFPDVAQALSFEDQICTPDLVVFLACANQRLKERLQKRAEQQRPDDNLKATQRRLVNFKQ
 NAAPLVKYFQEKGLIVTFDADRDEDAVFHDISVAVDSKLFNKEAPMSSDLDPSSMFDAGEIIDTGS
 DNQDDQLNVFGEDTEGGFMEDLRKCKIIFLMGGPGSGKGTQCEKLAEKYGFTHLSTGELLRQELTSESE
 RSKLIRDIMERGDLVPSGVVLELLKEAMVASLGNKGFIDGYPREVKQGEFFGRRIGDPHLVICMDCSA
 DTMTNRLLRSSQSSQRGEDGAKSIKRLEAYHRASIPVVTTYERKTQLRKVNAGTPEQVFLQLCTAIDS
 VF

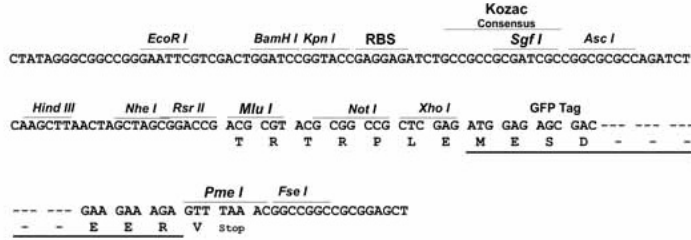
TRTRPLE - GFP Tag - V

Restriction Sites:

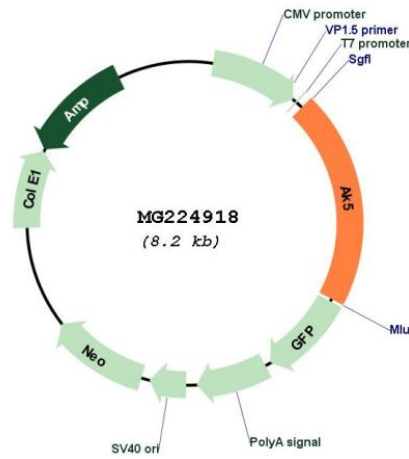
Sgfl-MluI

Cloning Scheme:

Cloning sites used for ORF Shutting:



Plasmid Map:



ACCN: NM_001081277

ORF Size:	1686 bp
OTI Disclaimer:	The molecular sequence of this clone aligns with the gene accession number as a point of reference only. However, individual transcript sequences of the same gene can differ through naturally occurring variations (e.g. polymorphisms), each with its own valid existence. This clone is substantially in agreement with the reference, but a complete review of all prevailing variants is recommended prior to use. More info
OTI Annotation:	This clone was engineered to express the complete ORF with an expression tag. Expression varies depending on the nature of the gene.
Components:	The ORF clone is ion-exchange column purified and shipped in a 2D barcoded Matrix tube containing 10ug of transfection-ready, dried plasmid DNA (reconstitute with 100 ul of water).
Reconstitution Method:	<ol style="list-style-type: none">1. Centrifuge at 5,000xg for 5min.2. Carefully open the tube and add 100ul of sterile water to dissolve the DNA.3. Close the tube and incubate for 10 minutes at room temperature.4. Briefly vortex the tube and then do a quick spin (less than 5000xg) to concentrate the liquid at the bottom.5. Store the suspended plasmid at -20°C. The DNA is stable for at least one year from date of shipping when stored at -20°C.
RefSeq:	NM_001081277.2
RefSeq Size:	3103 bp
RefSeq ORF:	1689 bp
Locus ID:	229949
UniProt ID:	Q920P5
Cytogenetics:	3 H3
Gene Summary:	Nucleoside monophosphate (NMP) kinase that catalyzes the reversible transfer of the terminal phosphate group between nucleoside triphosphates and monophosphates. Active on AMP and dAMP with ATP as a donor. When GTP is used as phosphate donor, the enzyme phosphorylates AMP, CMP, and to a small extent dCMP. Also displays broad nucleoside diphosphate kinase activity.[UniProtKB/Swiss-Prot Function]