

Product datasheet for **MG224908**

Gpr119 (NM_181751) Mouse Tagged ORF Clone

Product data:

Product Type: Expression Plasmids
Product Name: Gpr119 (NM_181751) Mouse Tagged ORF Clone
Tag: TurboGFP
Symbol: Gpr119
Mammalian Cell Selection: Neomycin
Vector: pCMV6-AC-GFP (PS100010)
E. coli Selection: Ampicillin (100 ug/mL)
ORF Nucleotide Sequence: >MG224908 representing NM_181751
Red=Cloning site Blue=ORF Green=Tags(s)

TTTTGTAATACGACTCACTATAGGGCGGCCGGGAATTCGTCGACTGGATCCGGTACCGAGGAGATCTGCC
GCC**CGATCGCC**

ATGGAGTCATCCTTCTCATTGGAGTGATCCTTGCTGTCCTAACCATCCTCATCATTGCTGTTAATGCAC
TGGTAGTTGTGGCTATGCTGCTATCAATCTACAAGAATGATGGTGTGGCCTTTGCTTACCTTGAATCT
GGCCGTGGCTGATACCTTGATTGGCGTGGCTATTTCTGGTCTAGTTACAGACCAGCTCTCCAGCTCTGCT
CAGCATAACAGAAAGACCTTGTGTAGCCTTCGGATGGCATTGTCACTTCTTCTGCAGCTGCCTCTGTCC
TCACCGTCATGCTGATTGCCTTTGACAGATACCTTGCCATTAAGCAGCCCCCTCCGTTACTTCCAGATCAT
GAATGGGCTTGTGGCTGGAGCATGCATTGCAGGACTGTGGTTGGTATCTTACCTTATCGGCTTCCCTCCA
CTCGGAGTCTCCATATTCCAGCAGACCACCTACCATGGACCCTGCAGCTTCTTTGCTGTGTTTACCCAA
GGTTTGTGCTGACCCTCTCCTGTGCTGGCTTCTTCCAGCTGTGCTCCTCTTTGTCTTCTACTGTGA
CATGCTCAAGATTGCCTCTGTGCACAGCCAGCAGATCCGGAAGATGGAACATGCAGGAGCCATGGCCGA
GCTTATCGGCCCCACGGTCTGTCAATGACTTCAAGGCTGTTTCGTAATAGCTGTTCTTATTGGGAGCT
TCACTCTGCTCCTGGTCTCCCTTCTCATAACTAGCATTGTGCAGGTGGCCTGCCACAAATGCTGCCTTA
CCAAGTGTGAAAAGTACCTGTGGCTCCTTGGAGTTGGCAACTCCCTACTCAACCCACTCATCTATGCC
TATTGGCAGAGGGAGGTTCCGGCAGCAGCTACCACATGGCCCTGGGAGTGAAAAAGTTCTCACTTCAA
TCCTCCTCCTTCTCCAGCCAGGAATCGTGGTCCAGAGAGGACCAGAGAAAGCGCCTATCACATCGTCAC
TATCAGCCATCCGGAGCTCGATGGC

ACGCGTACGCGGCCGCTCGAG - GFP Tag - GTTTAA



[View online »](#)

Protein Sequence: >MG224908 representing NM_181751
 Red=Cloning site Green=Tags(s)

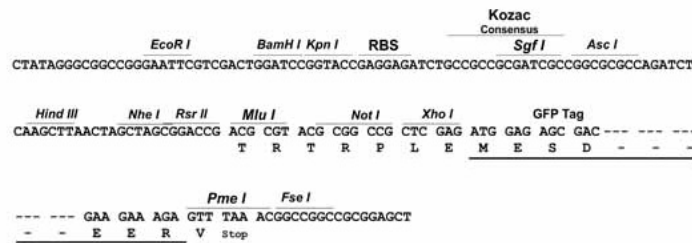
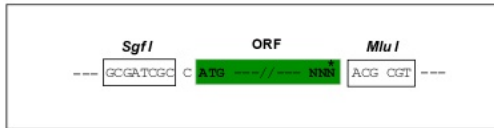
MESSFSFGVILAVLTILIIAVNALVVVAMLLSIYKNDGVGLCFTLNLA VADTLIGVAISGLVTDQLSSSA
 QHTQKTLCSLRMAFVTSSAAASVLTVMLIAFDRYLAIKQPLRYFQIMNGLVAGACIAGLWLVSYLIGFLP
 LGVSIFQQTYYHGPCSFFAVHFHPRFVLTLS CAGFFPAVLLFVFFYCDMLKIASVHSQQIRKMEHAGAMAG
 AYRPPRSVNDFKAVRTIAVLIGSFTLSWSPFLITSIVQVACHKCLYQVLEKYLWLLGVGNSLLNPLIYA
 YWQREVRQQLYHMALGVKKFFTSILLLLPARNRGPERTRESAYHIVTISHPELDG

TRTRPLE - GFP Tag - V

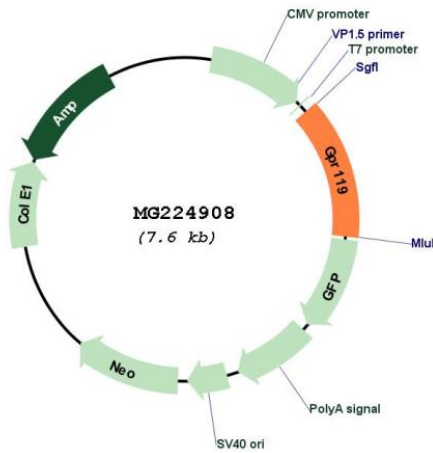
Restriction Sites: SgfI-MluI

Cloning Scheme:

Cloning sites used for ORF Shuttling:



Plasmid Map:



ACCN: NM_181751

ORF Size: 1005 bp

OTI Disclaimer:	The molecular sequence of this clone aligns with the gene accession number as a point of reference only. However, individual transcript sequences of the same gene can differ through naturally occurring variations (e.g. polymorphisms), each with its own valid existence. This clone is substantially in agreement with the reference, but a complete review of all prevailing variants is recommended prior to use. More info
OTI Annotation:	This clone was engineered to express the complete ORF with an expression tag. Expression varies depending on the nature of the gene.
Components:	The ORF clone is ion-exchange column purified and shipped in a 2D barcoded Matrix tube containing 10ug of transfection-ready, dried plasmid DNA (reconstitute with 100 ul of water).
Reconstitution Method:	<ol style="list-style-type: none">1. Centrifuge at 5,000xg for 5min.2. Carefully open the tube and add 100ul of sterile water to dissolve the DNA.3. Close the tube and incubate for 10 minutes at room temperature.4. Briefly vortex the tube and then do a quick spin (less than 5000xg) to concentrate the liquid at the bottom.5. Store the suspended plasmid at -20°C. The DNA is stable for at least one year from date of shipping when stored at -20°C.
RefSeq:	NM_181751.2 , NP_861416.1
RefSeq Size:	2278 bp
RefSeq ORF:	1008 bp
Locus ID:	236781
UniProt ID:	Q7TQP3
Cytogenetics:	X A5
Gene Summary:	Receptor for the endogenous fatty-acid ethanolamide oleoylethanolamide (OEA) and lysophosphatidylcholine (LPC). Functions as a glucose-dependent insulinotropic receptor. The activity of this receptor is mediated by G proteins which activate adenylate cyclase. Seems to act through a G(s) mediated pathway.[UniProtKB/Swiss-Prot Function]