

## Product datasheet for **MG224901**

### Cd300a (NM\_170758) Mouse Tagged ORF Clone

#### Product data:

**Product Type:** Expression Plasmids  
**Product Name:** Cd300a (NM\_170758) Mouse Tagged ORF Clone  
**Tag:** TurboGFP  
**Symbol:** Cd300a  
**Synonyms:** B230315M08Rik; Clm8; LMIR1; MAIR-I; MAIR-Ia; mcpir1; MMAC8; Pigr4  
**Mammalian Cell Selection:** Neomycin  
**Vector:** pCMV6-AC-GFP (PS100010)  
**E. coli Selection:** Ampicillin (100 ug/mL)  
**ORF Nucleotide Sequence:** >MG224901 representing NM\_170758  
Red=Cloning site Blue=ORF Green=Tags(s)

TTTTGTAATACGACTCACTATAGGGCGCCGGGAATTCGTCGACTGGATCCGGTACCGAGGAGATCTGCC  
GCC**CGATCGCC**

ATGACCCAACGGCCTCAGCTGTGTGGCTGCCACACTGTTGCTGCTGCTGCTGCTTTTTGGCTTCCAG  
GCTGTGCCCTCTGCATGGTCCCAGCACCATGTCAGGAAGTGTAGGTGAATCCCTGAGTGTGCATGTCG  
ATATGAGGAGAAATCAAGACTAAGGACAAATACTGGTGCAGAGTGTCACTTAAGATACTATGTAAGAT  
ATTGTCAAGACCAGCAGCTCAGAAGAAGCTAGGAGTGGCCGAGTGACCATCAGGGACCATCCAGACAACC  
TCACCTTTACAGTGACCTATGAGAGCCTCACCTGGAGGATGCAGACACCTACATGTGTGCGGTGGATAT  
ATCACTTTTTGATGGCTCCTTGGGGTTCGATAAGTACTTCAAGATTGAGTTGCTGTGGTTCCAAGTGAG  
GACCCAGTTTCATCTCCAGGACCAACACTAGAGACACCTGTGGTGTCCACCACTGCTGCTACCAAGGGTC  
CCGCCCTAGGATCCAACACAGAGGGCCACCGTGAACATGACTATCCAGGGCTTGAGGCTCCCAGCGCT  
GTTGTCTGTGTTAGCTCTCCTGCTGTTTCTGTTGGTGGGGACCTCTCTGCTGGCCTGGAGGATGTTCCAG  
AAGCGCTGGTCAAAGCTGATAGGCATCCAGAGCTGTCCAGAACCTCAGACAGGCTTCTGAGCAGAATG  
AGTGCCAGTATGTGAATTTGCAGCTGCACACGTGGTCTCTGAGGGAAGAGCCGGTGTACCAAGTCAGGT  
AGAAGTGGTGAATATAGCACATTGGCATTACCCAGGAAGAGCTTCACTATTCATCCGTGGCATTCAAC  
TCCCAGAGGCAGGATTCTCACGCCAATGGAGATTCTTTCATCAACCTCAGGACCAGAAAGCAGAGTACA  
GTGAGATCCAGAAGCCAGAAAAGGACTCTCTGACCTTTACCTG

**ACGCGT**ACGCGGCCGCTCGAG - GFP Tag - GTTTAA



[View online »](#)

**Protein Sequence:** >MG224901 representing NM\_170758  
Red=Cloning site Green=Tags(s)

MTQLASAVWLPTLLLLLLLFWLPGCVPLHGPSTMSGVSGESLSVSCRVEEFKTKDKYWCRVSLKILCKD  
 IVKTSSEEARSGRVTIRDHPDNLTFVTYESLTLEDADTYMCAVDISLFDGSLGFDKYFKIELSVVPSE  
 DPVSSPGPTLETPVVSTSLPTKGPALGSNTEGHREHDYSQGLRLPALLSVLALLLFLLVGTSLLAWRMFQ  
 KRLVKADRHPELSQNLRQASEQNECQYVNLQLHTWSLREEPVLP SQVEVVEYSTLALPQEELHYSSVAFN  
 SQRQDSHANGDSLHQPDQKA EYSEIQKPRKGLSDLYL

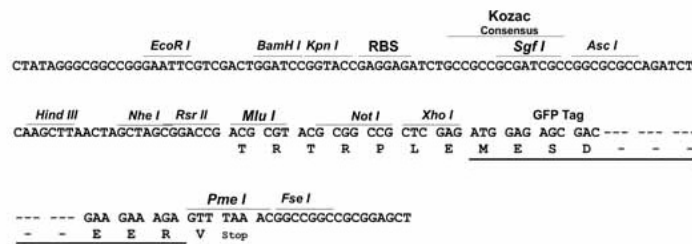
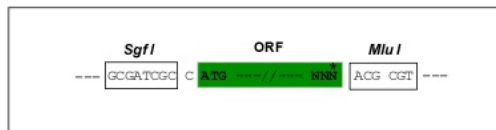
TRTRPLE - GFP Tag - V

**Chromatograms:** [https://cdn.origene.com/chromatograms/ja1734\\_f01.zip](https://cdn.origene.com/chromatograms/ja1734_f01.zip)

**Restriction Sites:** SgfI-MluI

**Cloning Scheme:**

Cloning sites used for ORF Shuttling:



**ACCN:** NM\_170758

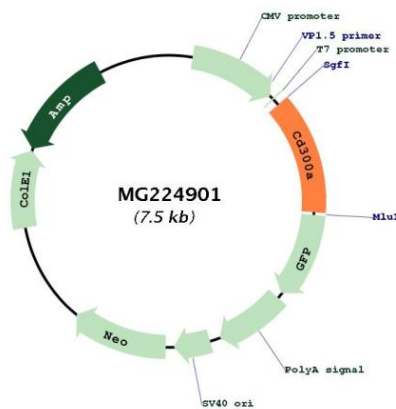
**ORF Size:** 954 bp

**OTI Disclaimer:** Due to the inherent nature of this plasmid, standard methods to replicate additional amounts of DNA in *E. coli* are highly likely to result in mutations and/or rearrangements. Therefore, OriGene does not guarantee the capability to replicate this plasmid DNA. Additional amounts of DNA can be purchased from OriGene with batch-specific, full-sequence verification at a reduced cost. Please contact our customer care team at [custsupport@origene.com](mailto:custsupport@origene.com) or by calling 301.340.3188 option 3 for pricing and delivery.

The molecular sequence of this clone aligns with the gene accession number as a point of reference only. However, individual transcript sequences of the same gene can differ through naturally occurring variations (e.g. polymorphisms), each with its own valid existence. This clone is substantially in agreement with the reference, but a complete review of all prevailing variants is recommended prior to use. [More info](#)

<b>OTI Annotation:</b>	This clone was engineered to express the complete ORF with an expression tag. Expression varies depending on the nature of the gene.
<b>Components:</b>	The ORF clone is ion-exchange column purified and shipped in a 2D barcoded Matrix tube containing 10ug of transfection-ready, dried plasmid DNA (reconstitute with 100 ul of water).
<b>Reconstitution Method:</b>	<ol style="list-style-type: none"> <li>1. Centrifuge at 5,000xg for 5min.</li> <li>2. Carefully open the tube and add 100ul of sterile water to dissolve the DNA.</li> <li>3. Close the tube and incubate for 10 minutes at room temperature.</li> <li>4. Briefly vortex the tube and then do a quick spin (less than 5000xg) to concentrate the liquid at the bottom.</li> <li>5. Store the suspended plasmid at -20°C. The DNA is stable for at least one year from date of shipping when stored at -20°C.</li> </ol>
<b>RefSeq:</b>	<a href="#">NM_170758.4</a>
<b>RefSeq Size:</b>	4642 bp
<b>RefSeq ORF:</b>	957 bp
<b>Locus ID:</b>	217303
<b>UniProt ID:</b>	<a href="#">Q6SJQ0</a>
<b>Cytogenetics:</b>	11 80.54 cM
<b>Gene Summary:</b>	Inhibitory receptor which may contribute to the down-regulation of cytolytic activity in natural killer (NK) cells, and to the down-regulation of mast cell degranulation (PubMed:12874256, PubMed:12893283, PubMed:16339535). Negatively regulates the Toll-like receptor (TLR) signaling mediated by MYD88 but not TRIF through activation of PTPN6 (By similarity). [UniProtKB/Swiss-Prot Function]

### Product images:



Circular map for MG224901